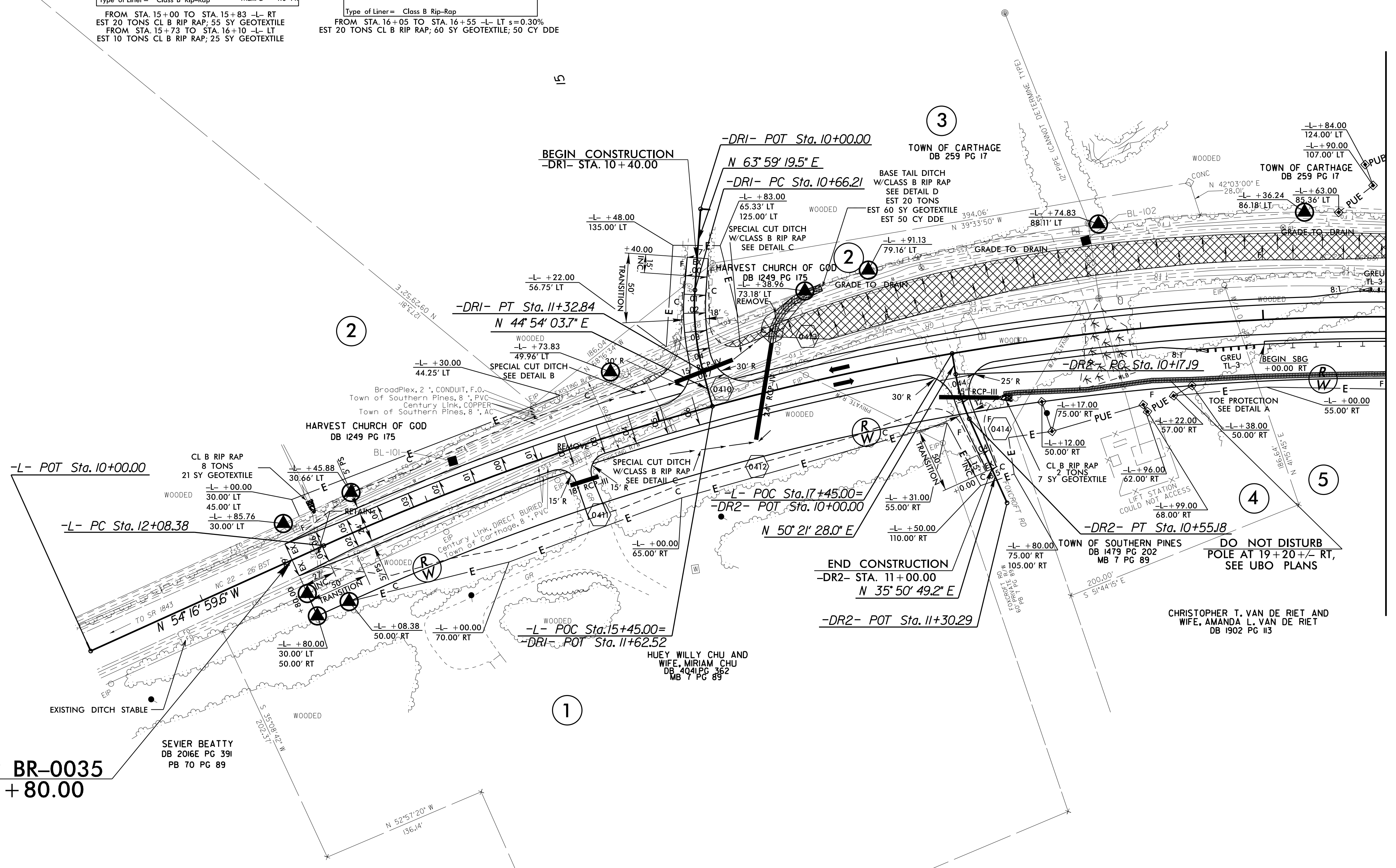


-L-	
PI Sta 20+86.24	
$\Delta = 45^{\circ} 22' 21.6''$ (RT)	
$D = 2^{\circ} 43' 42.1''$	
$L = 1,663.00'$	
$T = 877.86'$	
$R = 2,100.00'$	
$RO = \text{SEE PLANS}$	
$SE = .06$	
-DRI-	
PI Sta 10+99.84	PI Sta 10+36.29
$\Delta = 19^{\circ} 05' 15.8''$ (LT)	$\Delta = 14^{\circ} 30' 38.7''$ (LT)
$D = 28^{\circ} 38' 52.4''$	$D = 38^{\circ} 11' 49.9''$
$L = 66.63'$	$L = 37.99'$
$T = 33.63'$	$T = 19.10'$
$R = 200.00'$	$R = 150.00'$

**BEGIN TIP BR-0035**  
-L- STA. 11+80.00



**NOTES:**  
FOR -L- PROFILE, SEE SHEET 6  
FOR -DRI- PROFILE, SEE SHEET 7  
FOR -DR2- PROFILE, SEE SHEET 7  
PROPOSED OVERHEAD POWER LINE CROSSING AT STA. 20+00 +/-, SEE UBO PLANS

REVISIONS

8/17/99

I:\AUG-2021\08154\BR0035\_Rdy\_psh\_4.dgn  
3:58:05 PM 8/15/21