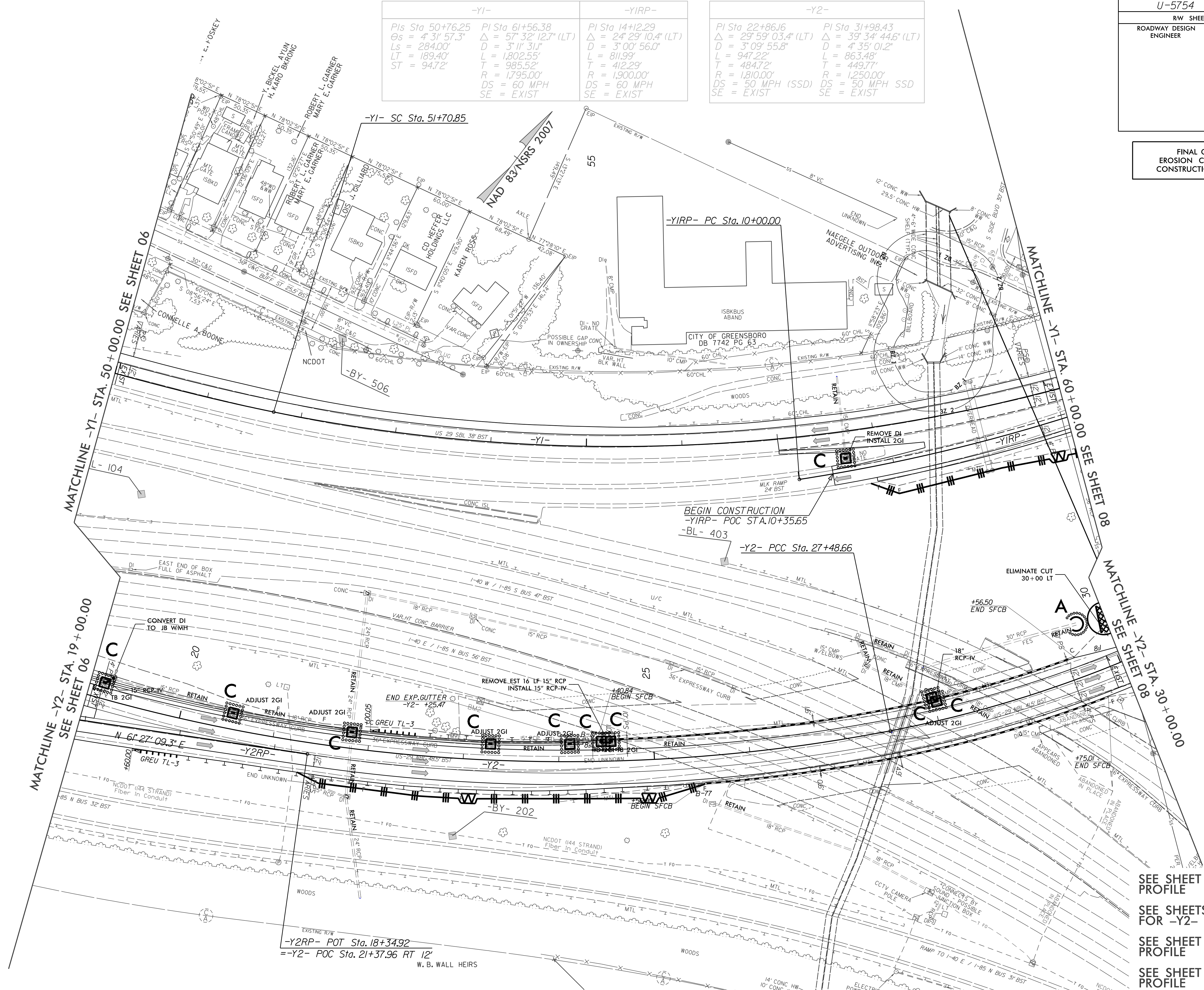


PROJECT REFERENCE NO.	SHEET NO.
U-5754	EC-13/CONST.07
RW SHEET NO.	
ROADWAY DESIGN ENGINEER	HYDRAULICS ENGINEER

FINAL GRADING
EROSION CONTROL FOR
CONSTRUCTION SHEET 07

-Y1-		-Y1RP-		-Y2-	
PI Sta 50+76.25	PI Sta 61+56.38	PI Sta 14+12.29	PI Sta 22+86.16	PI Sta 31+98.43	
$\theta_s = 4^\circ 31' 57.3"$	$\Delta = 57^\circ 32' 12.7"$ (LT)	$\Delta = 24^\circ 29' 10.4"$ (LT)	$\Delta = 29^\circ 59' 03.4"$ (LT)	$\Delta = 39^\circ 34' 44.6"$ (LT)	
$L_s = 284.00'$	$D = 3^\circ 11' 31"$	$D = 3^\circ 00' 56.0"$	$D = 3^\circ 09' 55.8"$	$D = 4^\circ 35' 01.2"$	
$LT = 189.40'$	$L = 1,802.55'$	$L = 811.99'$	$L = 947.22'$	$L = 863.48'$	
$ST = 94.72'$	$T = 985.52'$	$T = 412.29'$	$T = 484.72'$	$T = 449.77'$	
	$R = 1,795.00'$	$R = 1,900.00'$	$R = 1,810.00'$	$R = 1,250.00'$	
	$DS = 60$ MPH	$DS = 60$ MPH	$DS = 50$ MPH (SSD)	$DS = 50$ MPH SSD	
	$SE = EXIST$	$SE = EXIST$	$SE = EXIST$	$SE = EXIST$	



SEE SHEET 12 FOR -Y1-
PROFILE
SEE SHEETS 12 AND 13
FOR -Y2- PROFILE
SEE SHEET 14 FOR -Y1RP-
PROFILE
SEE SHEET 14 FOR -Y2RP-
PROFILE