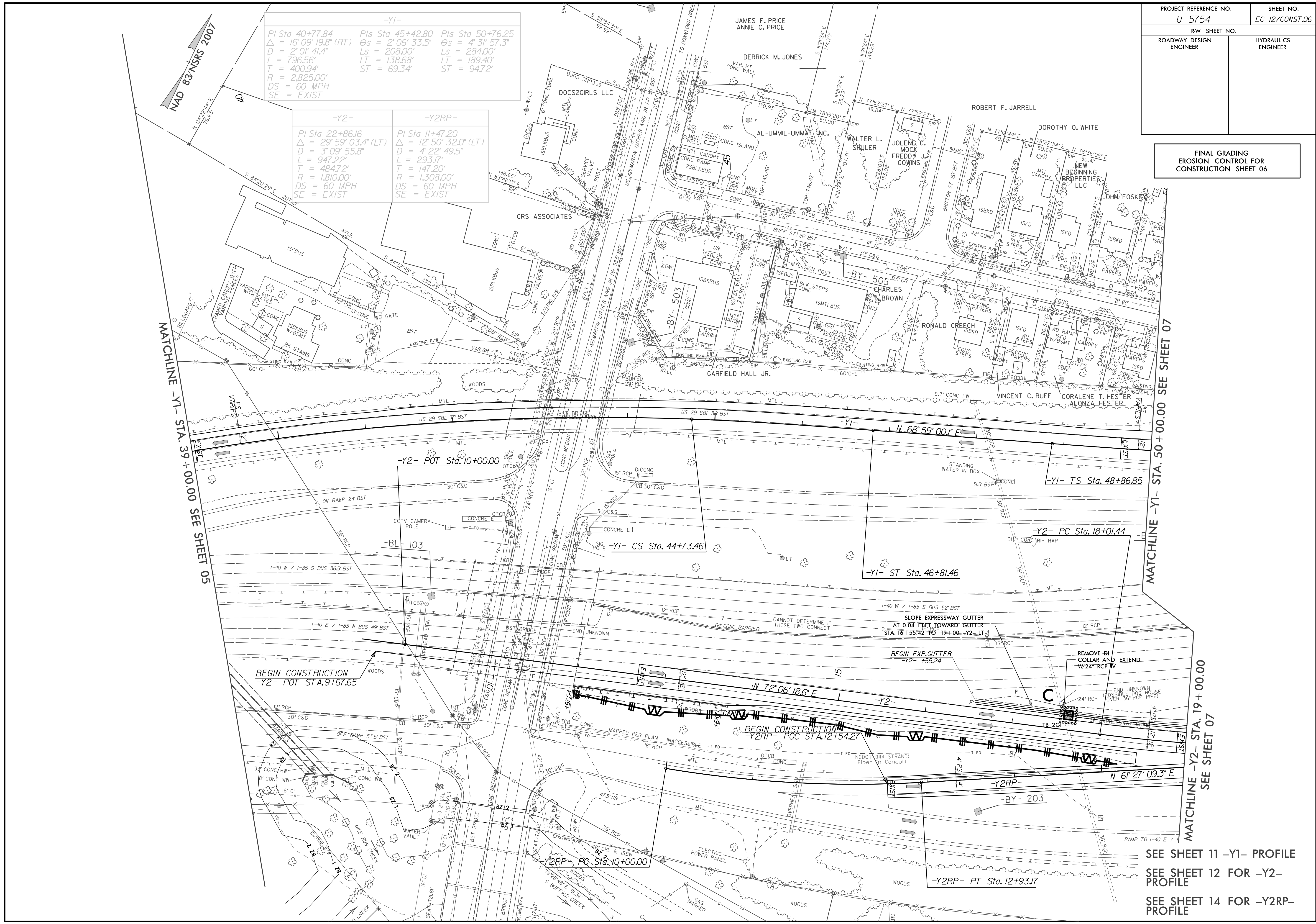


PROJECT REFERENCE NO.	SHEET NO.
U-5754	EC-12/CONST.06
RW SHEET NO.	
ROADWAY DESIGN ENGINEER	HYDRAULICS ENGINEER

FINAL GRADING  
EROSION CONTROL FOR  
CONSTRUCTION SHEET 06

-Y1-  
 PI Sta 40+77.84    Pls Sta 45+42.80    Pls Sta 50+76.25  
 $\Delta = 16^{\circ}09'19.8''$  (RT)     $\Delta_s = 2^{\circ}06'33.5''$      $\Delta_s = 4^{\circ}31'57.3''$   
 $D = 2^{\circ}01'41.4''$      $L_s = 208.00'$      $L_s = 284.00'$   
 $L = 796.56'$      $LT = 138.68'$      $LT = 189.40'$   
 $T = 400.94'$      $ST = 69.34'$      $ST = 94.72'$   
 $R = 2,825.00'$   
 $DS = 60$  MPH  
 $SE = EXIST$

-Y2-                      -Y2RP-  
 PI Sta 22+86.16            PI Sta 11+47.20  
 $\Delta = 29^{\circ}59'03.4''$  (LT)     $\Delta = 12^{\circ}50'32.0''$  (LT)  
 $D = 3^{\circ}09'55.8''$              $D = 4^{\circ}22'49.5''$   
 $L = 947.22'$                  $L = 293.17'$   
 $T = 484.72'$                  $T = 147.20'$   
 $R = 1,810.00'$                $R = 1,308.00'$   
 $DS = 60$  MPH  
 $SE = EXIST$



MATCHLINE -Y1- STA. 39+00.00 SEE SHEET 05

MATCHLINE -Y1- STA. 50+00.00 SEE SHEET 07

MATCHLINE -Y2- STA. 19+00.00  
SEE SHEET 07

BEGIN CONSTRUCTION  
-Y2- POT STA. 9+67.65

BEGIN CONSTRUCTION  
-Y2RP- POT STA. 12+54.27

SEE SHEET 11 -Y1- PROFILE  
SEE SHEET 12 FOR -Y2- PROFILE  
SEE SHEET 14 FOR -Y2RP- PROFILE