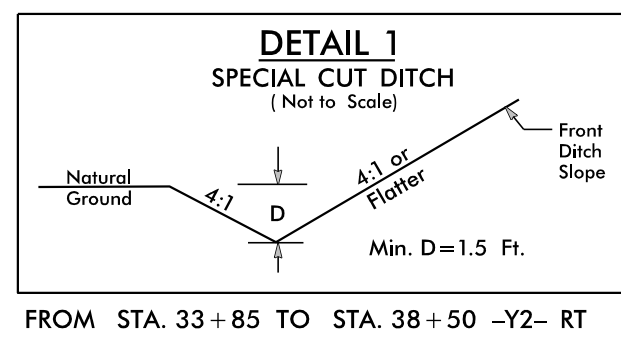
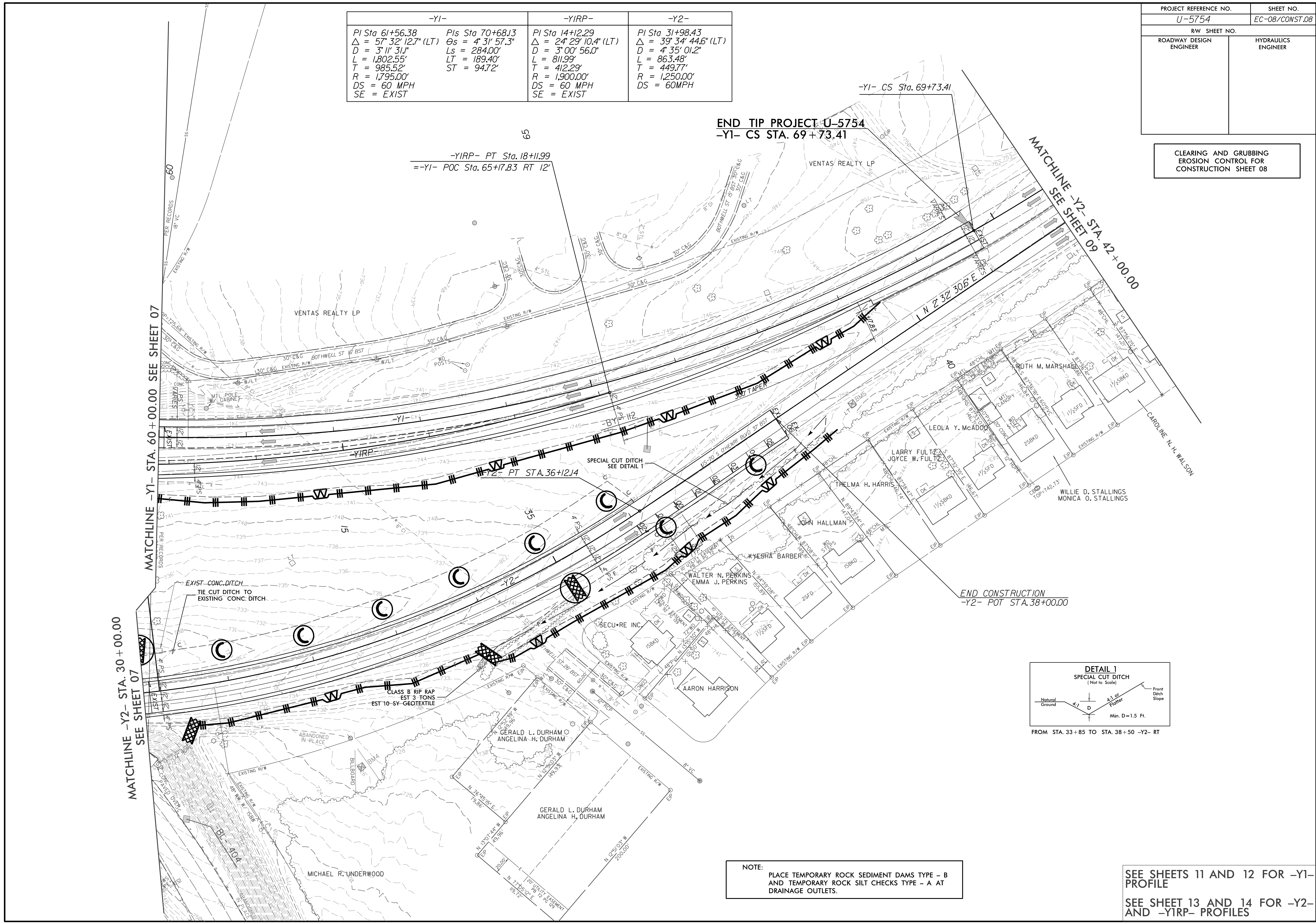


PROJECT REFERENCE NO.	SHEET NO.
U-5754	EC-08/CONST.08
RW SHEET NO.	
ROADWAY DESIGN ENGINEER	HYDRAULICS ENGINEER

CLEARING AND GRUBBING
EROSION CONTROL FOR
CONSTRUCTION SHEET 08

-Y1-		-Y1RP-	-Y2-
PI Sta 61+56.38	PIs Sta 70+68.13	PI Sta 14+12.29	PI Sta 31+98.43
$\Delta = 57^{\circ} 32' 12.7" (LT)$	$\Theta_s = 4^{\circ} 31' 57.3"$	$\Delta = 24^{\circ} 29' 10.4" (LT)$	$\Delta = 39^{\circ} 34' 44.6" (LT)$
$D = 3^{\circ} 11' 31.1"$	$L_s = 284.00'$	$D = 3^{\circ} 00' 56.0"$	$D = 4^{\circ} 35' 01.2"$
$L = 1,802.55'$	$LT = 189.40'$	$L = 811.99'$	$L = 863.48'$
$T = 985.52'$	$ST = 94.72'$	$T = 412.29'$	$T = 449.77'$
$R = 1,795.00'$		$R = 1,900.00'$	$R = 1,250.00'$
$DS = 60 MPH$		$DS = 60 MPH$	$DS = 60 MPH$
$SE = EXIST$		$SE = EXIST$	



NOTE:
PLACE TEMPORARY ROCK SEDIMENT DAMS TYPE - B
AND TEMPORARY ROCK SILT CHECKS TYPE - A AT
DRAINAGE OUTLETS.

SEE SHEETS 11 AND 12 FOR -Y1-
PROFILE
SEE SHEET 13 AND 14 FOR -Y2-
AND -Y1RP- PROFILES