

ENVIRONMENTALLY SENSITIVE AREA
SEE PROJECT SPECIAL PROVISIONS

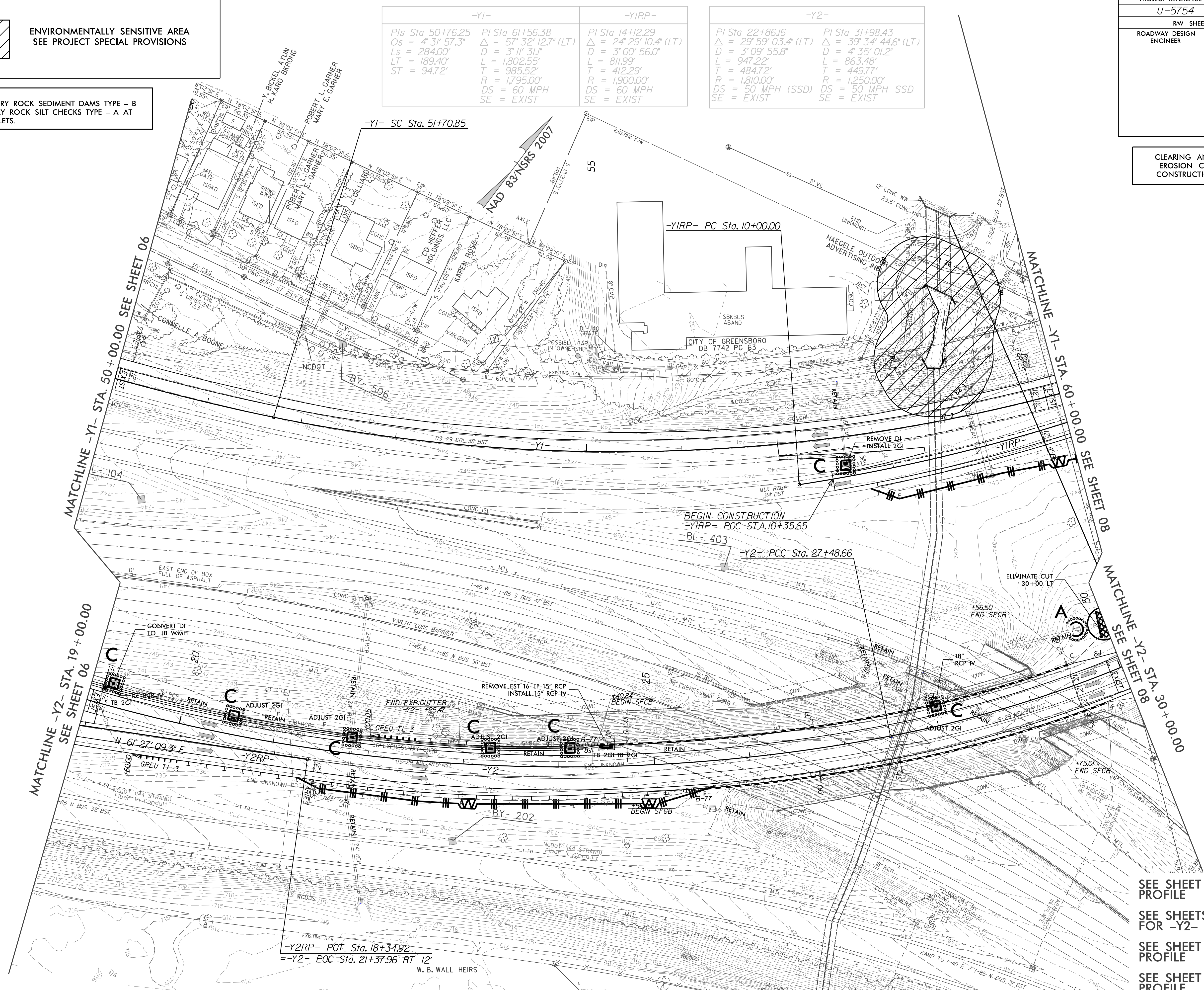
NOTE:

PLACE TEMPORARY ROCK SEDIMENT DAMS TYPE - B
AND TEMPORARY ROCK SILT CHECKS TYPE - A AT
DRAINAGE OUTLETS.

-Y1-		-Y1RP-		-Y2-	
PI Sta 50+76.25	PI Sta 61+56.38	PI Sta 14+12.29	PI Sta 22+86.16	PI Sta 31+98.43	
$\theta_s = 4' 31' 57.3''$	$\Delta = 57' 32' 12.7''$ (LT)	$\Delta = 24' 29' 10.4''$ (LT)	$\Delta = 29' 59' 03.4''$ (LT)	$\Delta = 39' 34' 44.6''$ (LT)	
$L_s = 284.00'$	$D = 3' 11' 31''$	$D = 3' 00' 56.0''$	$D = 3' 09' 55.8''$	$D = 4' 35' 01.2''$	
$LT = 189.40'$	$L = 1,802.55'$	$L = 811.99'$	$L = 947.22'$	$L = 863.48'$	
$ST = 94.72'$	$T = 985.52'$	$T = 412.29'$	$T = 484.72'$	$T = 449.77'$	
	$R = 1,795.00'$	$R = 1,900.00'$	$R = 1,810.00'$	$R = 1,250.00'$	
	$DS = 60$ MPH	$DS = 60$ MPH	$DS = 50$ MPH (SSD)	$DS = 50$ MPH SSD	
	$SE = EXIST$	$SE = EXIST$	$SE = EXIST$	$SE = EXIST$	

PROJECT REFERENCE NO. U-5754	SHEET NO. EC-07/CONST.07
RW SHEET NO.	
ROADWAY DESIGN ENGINEER	HYDRAULICS ENGINEER

CLEARING AND GRUBBING
EROSION CONTROL FOR
CONSTRUCTION SHEET 07



SEE SHEET 12 FOR -Y1-
PROFILE
SEE SHEETS 12 AND 13
FOR -Y2- PROFILE
SEE SHEET 14 FOR -Y1RP-
PROFILE
SEE SHEET 14 FOR -Y2RP-
PROFILE