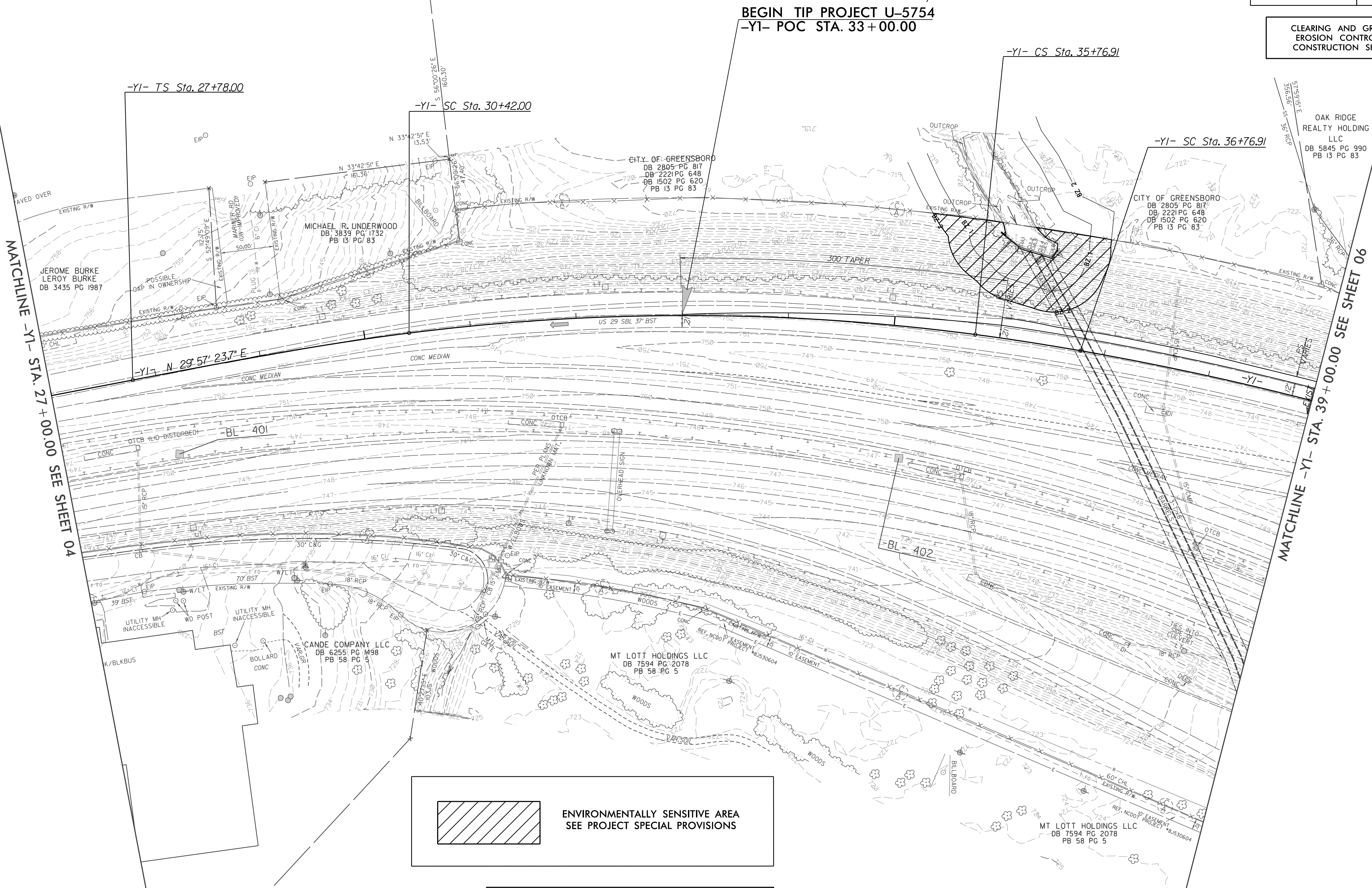


PROJECT REFERENCE NO.	SHEET NO.
U-5754	EC-05/CONST.05
RW SHEET NO.	
ROADWAY DESIGN ENGINEER	HYDRAULICS ENGINEER

-Y1-			
Pls Sta 29+54.04	PI Sta 33+10.94	Pls Sta 36+24.38	PI Sta 40+77.84
$\Theta s = 3^{\circ} 38' 09.9"$	$\Delta = 14^{\circ} 44' 04.3"$ (RT)	$\Theta s = 1^{\circ} 00' 50.6"$	$\Delta = 16^{\circ} 09' 19.8"$ (RT)
$Ls = 264.00'$	$D = 2^{\circ} 45' 16.6"$	$\Theta s = 1^{\circ} 22' 38.4"$	$D = 2^{\circ} 01' 41.4"$
$LT = 176.04'$	$L = 534.91'$	$Ls = 100.00'$	$L = 796.56'$
$ST = 88.03'$	$T = 268.94'$	$LT = 52.54'$	$T = 400.94'$
	$R = 2,080.00'$		$R = 2,825.00'$
	$DS = 60$ MPH		$DS = 60$ MPH
	$SE = EXIST$		$SE = EXIST$

NAD 83/NRS 2007

CLEARING AND GRUBBING  
EROSION CONTROL FOR  
CONSTRUCTION SHEET 05



NOTE:  
PLACE TEMPORARY ROCK SEDIMENT DAMS TYPE - B  
AND TEMPORARY ROCK SILT CHECKS TYPE - A AT  
DRAINAGE OUTLETS.

SEE SHEETS 10 AND 11 FOR  
-Y1- PROFILE