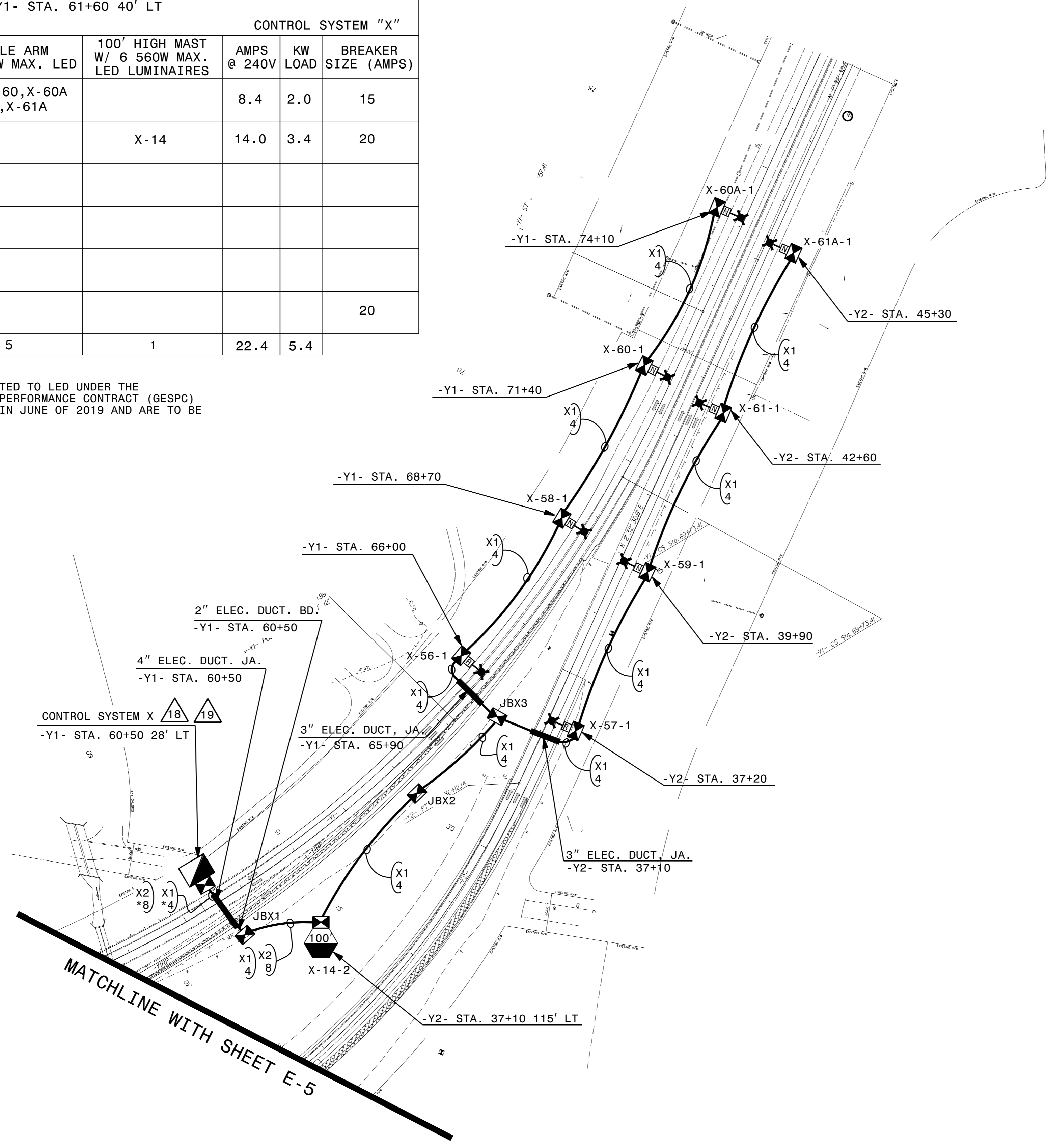


**DOCUMENT NOT CONSIDERED FINAL  
UNLESS ALL SIGNATURES COMPLETED**

# USE FOR LIGHTING CONSTRUCTION ONLY

LOAD SCHEDULE -Y1- STA. 61+60 40' LT						
1Ø, 3W, 120/240 VAC			CONTROL SYSTEM "X"			
CIRCUIT ID	SINGLE ARM 1 @ 196W* MAX. LED	SINGLE ARM 1 @ 285W MAX. LED	100' HIGH MAST W/ 6 560W MAX. LED LUMINAIRES	AMPS @ 240V	KW LOAD	BREAKER SIZE (AMPS)
X1	X-56, X-57 X-58	X-59, X-60, X-60A X-61, X-61A		8.4	2.0	15
X2			X-14	14.0	3.4	20
SPARE						20
TOTAL	3	5	1	22.4	5.4	

\* NOTE: THESE LUMINAIRES WERE UPDATED TO LED UNDER THE GUARANTEED ENERGY SAVINGS PERFORMANCE CONTRACT (GESPC) WITH BRADY/TRANE SERVICES IN JUNE OF 2019 AND ARE TO BE REUSED.



SEE SHEET "E-1" FOR  
LEGEND & △ NOTES

2			
1			
Rev.	Date	Description	Approved
<b>NORTH CAROLINA DEPARTMENT OF TRANSPORTATION</b> ROADWAY DESIGN LIGHTING/ELECTRICAL SECTION <b>LIGHTING LAYOUT</b> US 220 NORTH OF INTERCHANGE WITH I-40 GUILFORD COUNTY			
Drawn By:	AB	Approved By:	Dwg No.:

09-AUG-2021 17:43  
 R:\L\Lighting Design\U5754\_1&e\_psh.e6.dgn  
 1:br:awn: 09-08-2021 17:43