

8/17/19

Note: For concrete barrier rail in the vicinity of -Y2- Station 23+00 to 25+00, see Special Concrete Barrier Rail Special Provision.

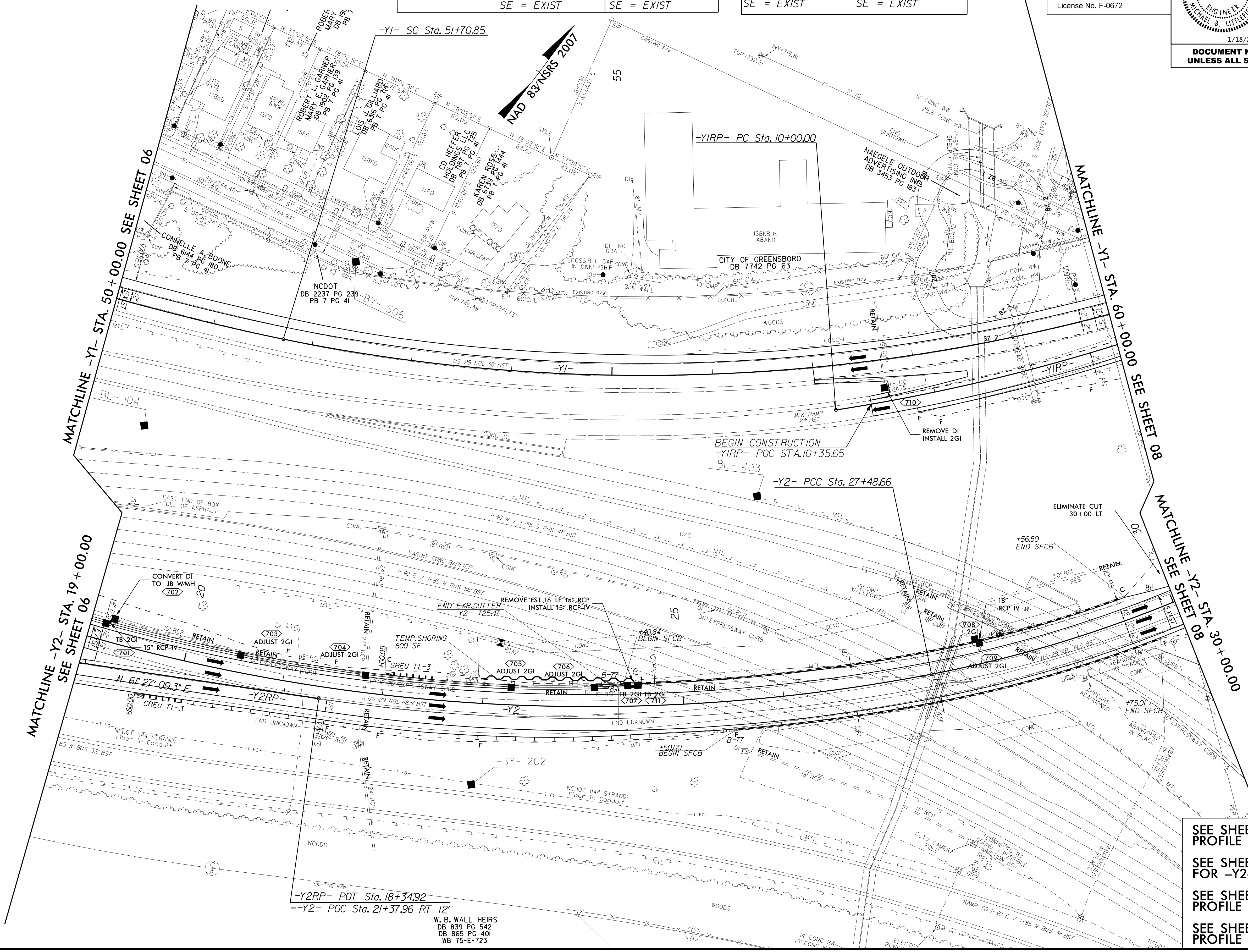
-Y1-		-Y1RP-	
PIs Sta 50+76.25	PI Sta 61+56.38	PI Sta 14+12.29	PI Sta 31+98.43
$\Delta s = 4' 31'' 57.3''$	$\Delta = 57' 32'' 12.7''$ (LT)	$\Delta = 24' 29'' 10.4''$ (LT)	$\Delta = 29' 59'' 03.4''$ (LT)
$Ls = 284.00'$	$D = 3' 11'' 31.1''$	$D = 3' 00'' 56.0''$	$D = 4' 35'' 01.2''$
$LT = 189.40'$	$L = 1,802.55'$	$L = 811.99'$	$L = 863.48'$
$ST = 94.72'$	$T = 985.52'$	$T = 412.29'$	$T = 449.77'$
	$R = 1,795.00'$	$R = 1,900.00'$	$R = 1,250.00'$
	$DS = 60$ MPH	$DS = 60$ MPH	$DS = 50$ MPH SSD
	$SE = EXIST$	$SE = EXIST$	$SE = EXIST$

-Y2-	
PI Sta 22+86.16	PI Sta 31+98.43
$\Delta = 29' 59'' 03.4''$ (LT)	$\Delta = 39' 34'' 44.6''$ (LT)
$D = 3' 09'' 55.8''$	$D = 4' 35'' 01.2''$
$L = 947.22'$	$L = 863.48'$
$T = 484.72'$	$T = 449.77'$
$R = 1,810.00'$	$R = 1,250.00'$
$DS = 50$ MPH (SSD)	$DS = 50$ MPH SSD
$SE = EXIST$	$SE = EXIST$

**Stantec**  
 Stantec Consulting Services Inc.  
 801 Jones Franklin Road  
 Suite 300  
 Raleigh, NC 27606  
 Tel. (919) 851-6886  
 Fax. (919) 851-7024  
 www.stantec.com  
 License No. F-0672

PROJECT REFERENCE NO. U-5754	SHEET NO. 07
ROADWAY DESIGN ENGINEER MICHAEL B. LITTLEFIELD SEAL 035663 1/18/2019	HYDRAULICS ENGINEER JOSHUA G. DUTTON SEAL 026971 1/18/2019
<b>DOCUMENT NOT CONSIDERED FINAL UNLESS ALL SIGNATURES COMPLETED</b>	

REVISIONS



SEE SHEET 12 FOR -Y1- PROFILE  
 SEE SHEETS 12 AND 13 FOR -Y2- PROFILE  
 SEE SHEET 14 FOR -Y1RP- PROFILE  
 SEE SHEET 14 FOR -Y2RP- PROFILE

I:\42019\142019\Roadway\Proj\U5754\_Rdy\_psh07.dgn

W. B. WALL HEIRS  
DB 839 PG 542  
DB 865 PG 401  
WB 75-E-723