

8/17/19



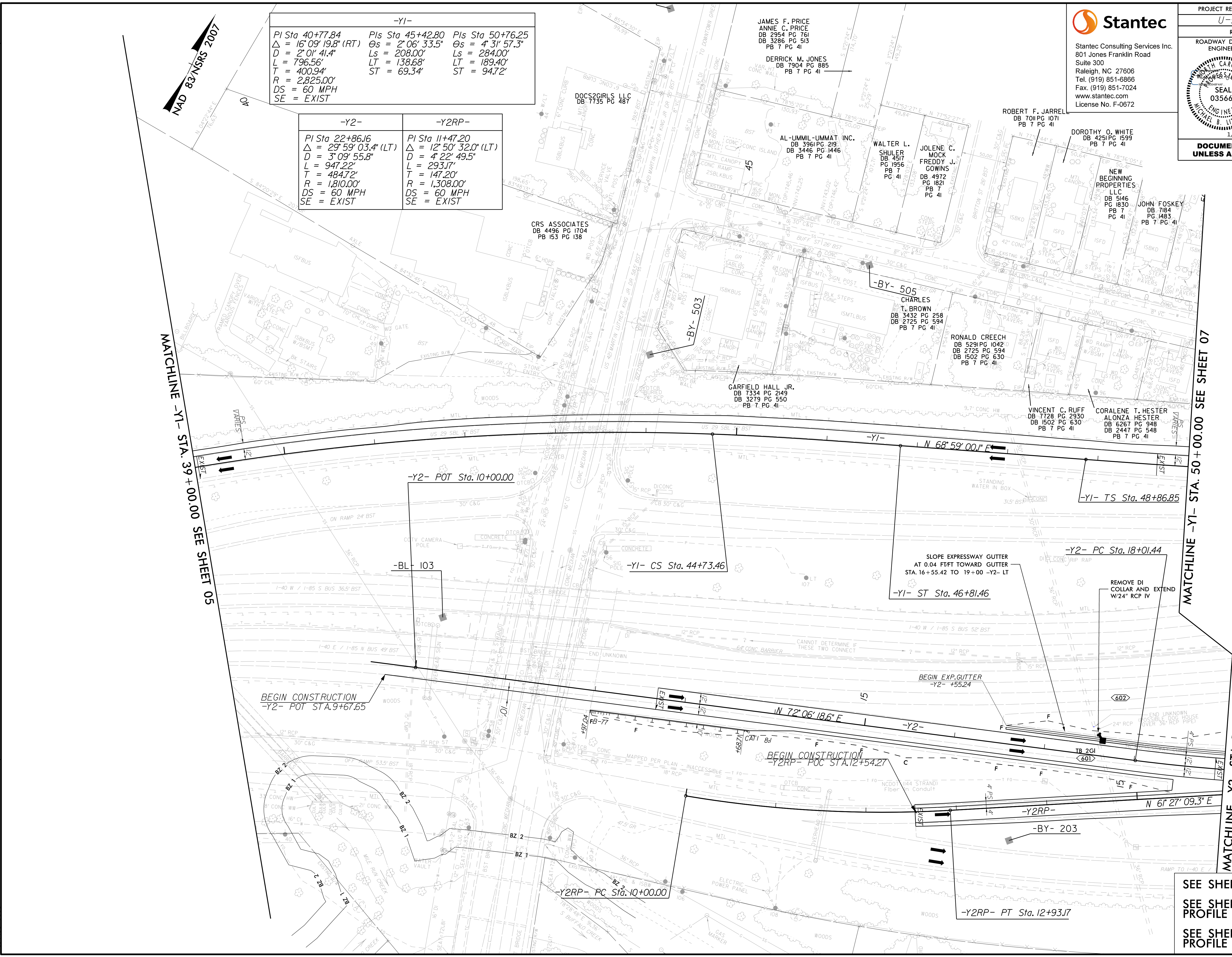
Stantec Consulting Services Inc.
801 Jones Franklin Road
Suite 300
Raleigh, NC 27606
Tel. (919) 851-6886
Fax. (919) 851-7024
www.stantec.com
License No. F-0672

PROJECT REFERENCE NO. U-5754	SHEET NO. 06
ROADWAY DESIGN ENGINEER	HYDRAULICS ENGINEER
SEAL 035663 MICHAEL B. LITTLEFIELD 1/18/2019	SEAL 026971 JOHN G. DARTON 1/18/2019
DOCUMENT NOT CONSIDERED FINAL UNLESS ALL SIGNATURES COMPLETED	

-Y1-

PI Sta 40+77.84 Δ = 16° 09' 19.8" (RT) D = 2° 01' 41.4" L = 796.56' T = 400.94' R = 2,825.00' DS = 60 MPH SE = EXIST	PIs Sta 45+42.80 Os = 2° 06' 33.5" Ls = 208.00' LT = 138.68' ST = 69.34'	PIs Sta 50+76.25 Os = 4° 31' 57.3" Ls = 284.00' LT = 189.40' ST = 94.72'
---	--	--

-Y2-	-Y2RP-
PI Sta 22+86.16 Δ = 29° 59' 03.4" (LT) D = 3° 09' 55.8" L = 947.22' T = 484.72' R = 1,810.00' DS = 60 MPH SE = EXIST	PI Sta 11+47.20 Δ = 12° 50' 32.0" (LT) D = 4° 22' 49.5" L = 293.17' T = 147.20' R = 1,308.00' DS = 60 MPH SE = EXIST



REVISIONS

1/8/2019
L:\Roadway\Proj\U5754_Rdy_psh06.dgn

SEE SHEET 11 -Y1- PROFILE
SEE SHEET 12 FOR -Y2- PROFILE
SEE SHEET 14 FOR -Y2RP- PROFILE