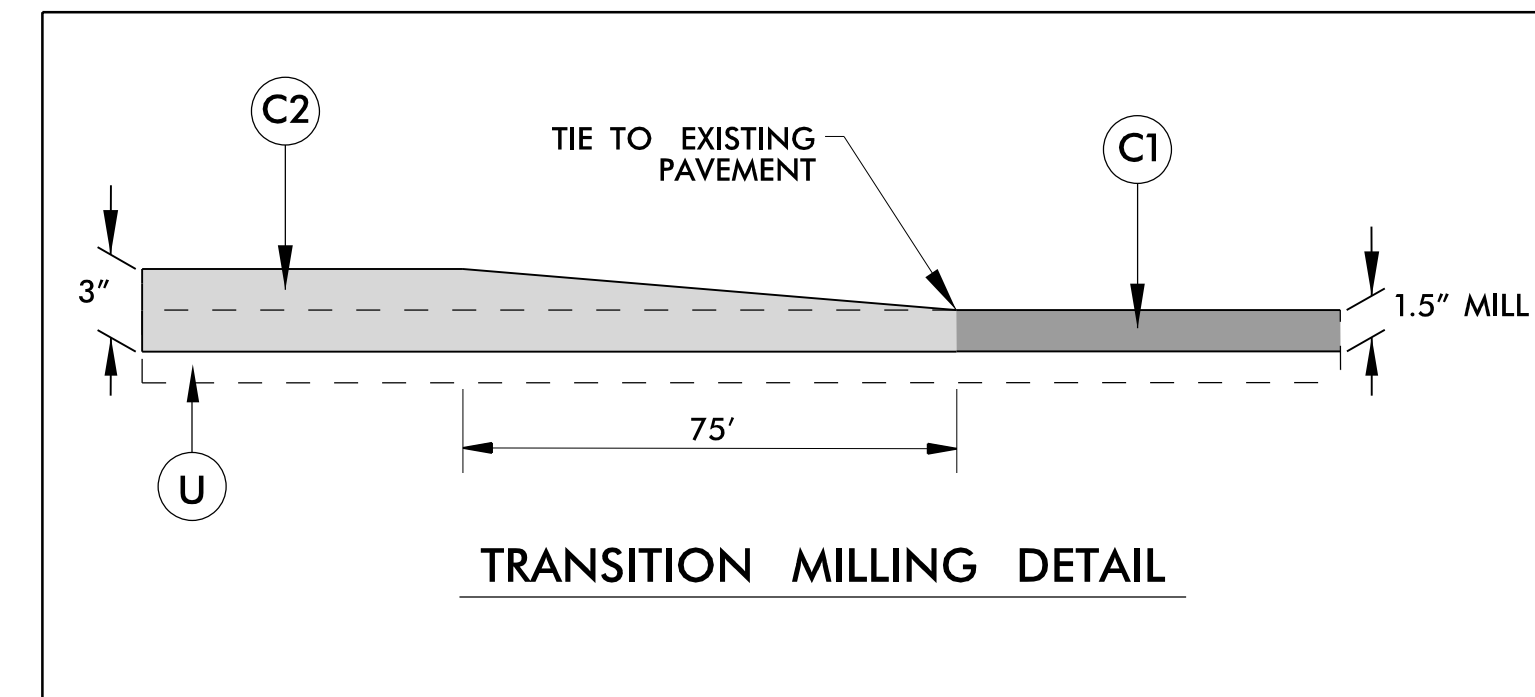


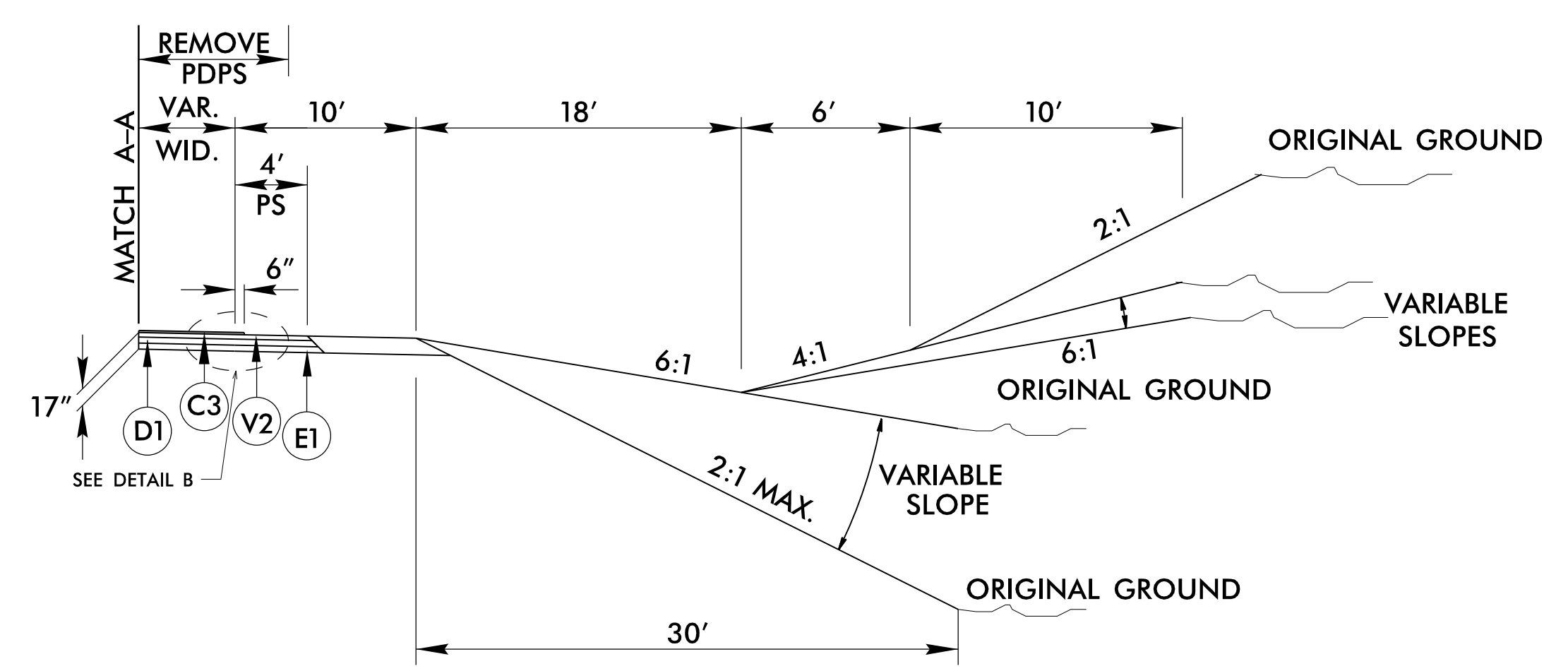
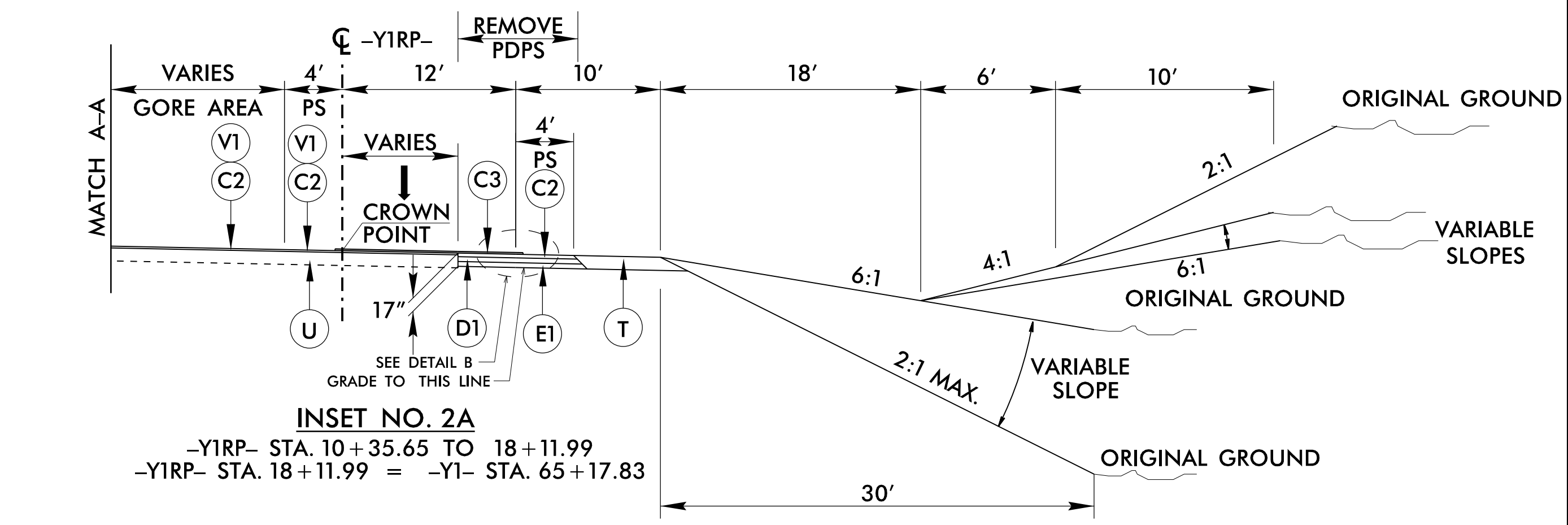
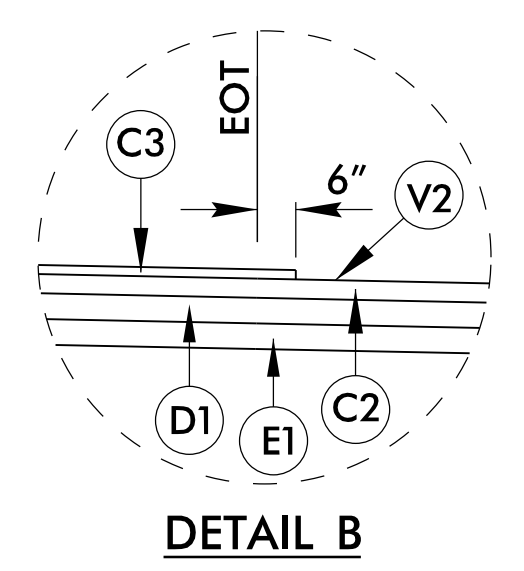
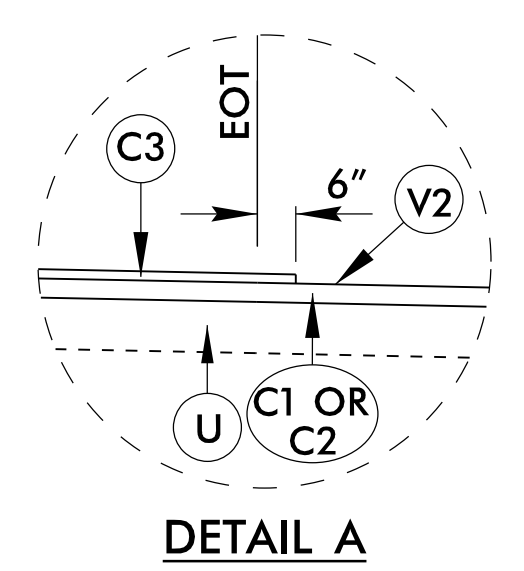
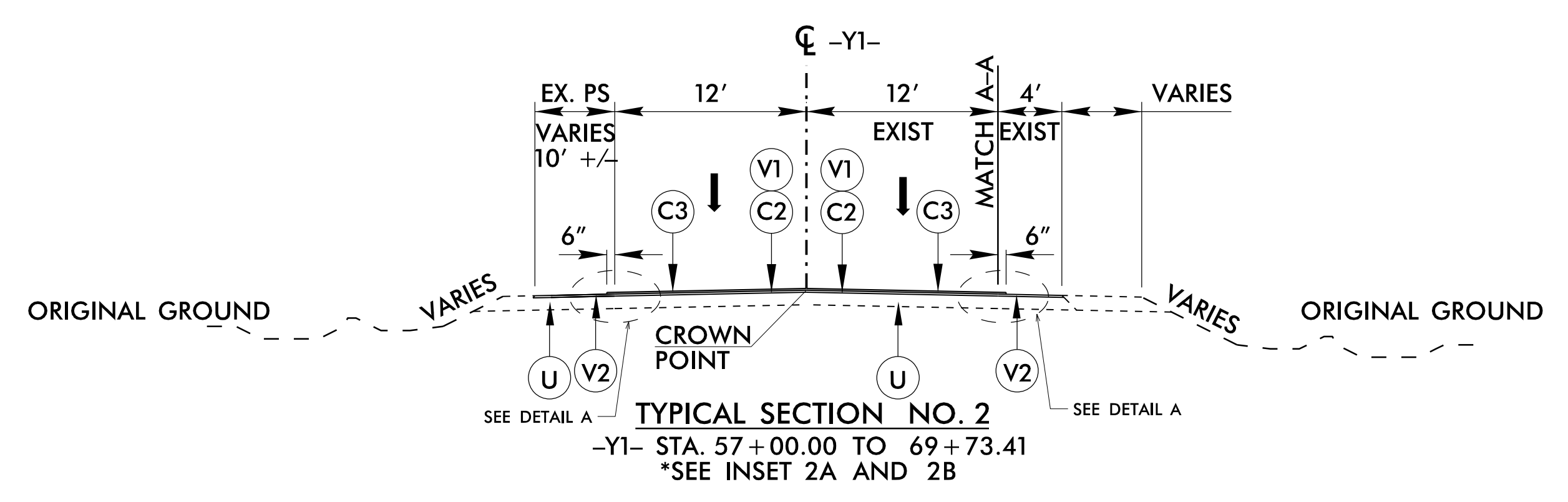
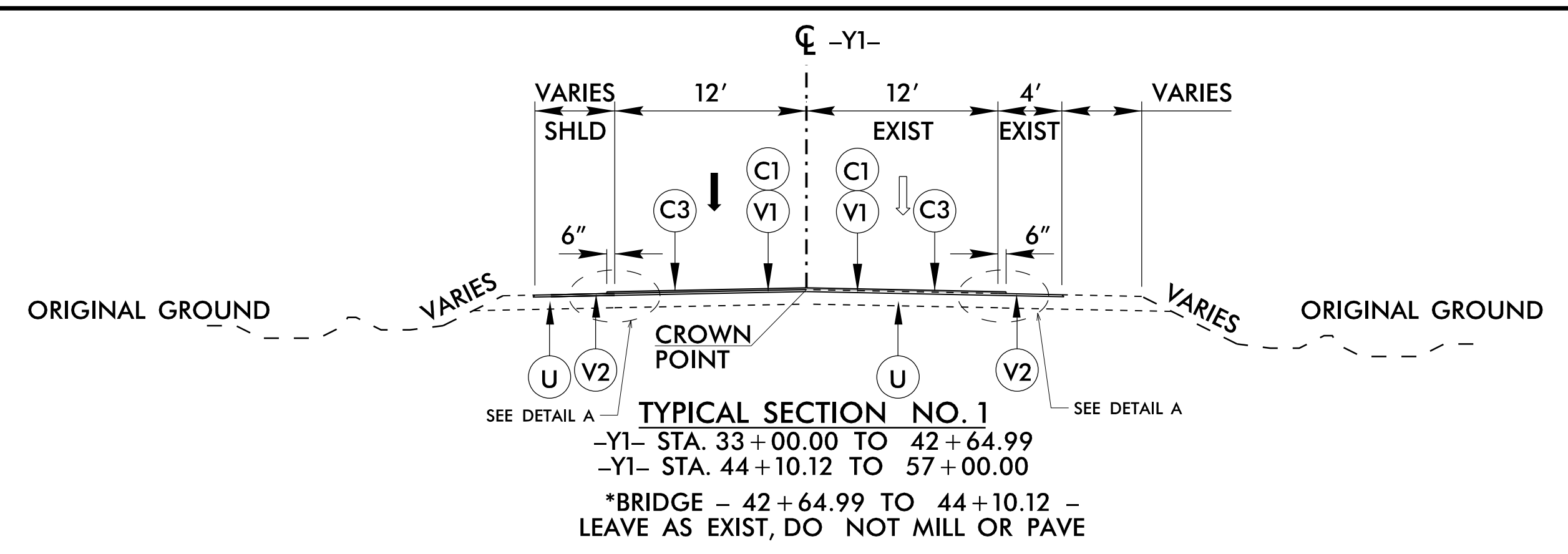
5/14/21

PAVEMENT SCHEDULE	
C1	PROP. APPROX. 1½" ASPHALT CONCRETE SURFACE COURSE, TYPE S9.5D, AT AN AVERAGE RATE OF 168 LBS. PER SQ. YD.
C2	PROP. APPROX. 3" ASPHALT CONCRETE SURFACE COURSE, TYPE S9.5D, AT AN AVERAGE RATE OF 168 LBS. PER SQ. YD. IN EACH OF TWO LAYERS.
C3	PROP. APPROX. ¾" OPEN-GRADED ASPHALT FRICTION COURSE, TYPE FC-1 MODIFIED, AT AN AVERAGE RATE OF 90 LBS PER SQ. YD. LAYERS.
D1	PROP. APPROX. 4" ASPHALT CONCRETE INTERMEDIATE COURSE, TYPE I19.0C, AT AN AVERAGE RATE OF 456 LBS. PER SQ. YD.
E1	PROP. APPROX. 10" ASPHALT CONCRETE BASE COURSE, TYPE B25.0C, AT AN AVERAGE RATE OF 570 LBS. PER SQ. YD. IN EACH OF TWO LAYERS.
R1	EXPRESSWAY GUTTER
R2	SINGLE FACED CONCRETE BARRIER
T	EARTHEN MATERIAL
U	EXISTING PAVEMENT
V1	MILLING 1.5" BITUMINOUS PAVEMENT
V2	MILLED RUMBLE STRIP

NOTE: PAVEMENT EDGE SLOPES ARE 1:1 UNLESS SHOWN OTHERWISE. SEE PLANS FOR VARIABLE PAVED SHOULDER WIDTHS.



NOTE: MATCH EXISTING SUPERLEVATION UNLESS NOTED OTHERWISE ON PLANS



**Stantec**  
 Stantec Consulting Services Inc.  
 801 Jones Franklin Road  
 Suite 300  
 Raleigh, NC 27606  
 Tel. (919) 851-6866  
 Fax. (919) 851-7024  
 www.stantec.com  
 License No. F-0672

PROJECT REFERENCE NO. U-5754	SHEET NO. 2A-1
RW SHEET NO.	
ROADWAY DESIGN ENGINEER <i>[Signature]</i>	PAVEMENT ENGINEER <i>[Signature]</i>
10/6/2021	10/7/2021
<b>DOCUMENT NOT CONSIDERED FINAL UNLESS ALL SIGNATURES COMPLETED</b>	

U:\R\23\2021\Proj\U5754\_Rdy\_tup.dgn