

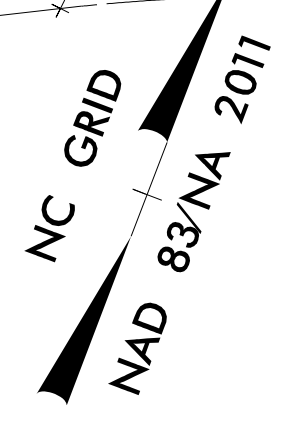
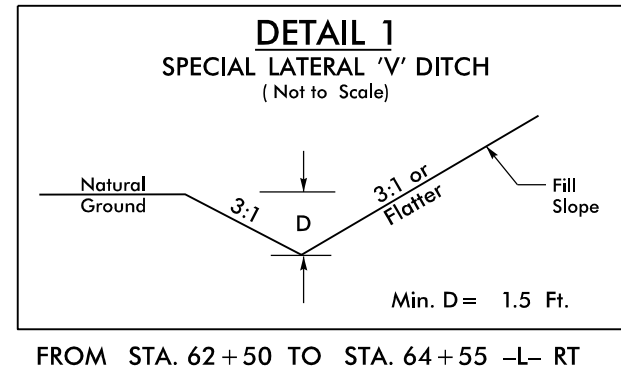
**This electronic collection of documents is provided
for the convenience of the user
and is Not a Certified Document –**

**The documents contained herein were originally issued
and sealed by the individuals whose names and license
numbers appear on each page, on the dates appearing
with their signature on that page.**

**This file or an individual page
shall not be considered a certified document.**

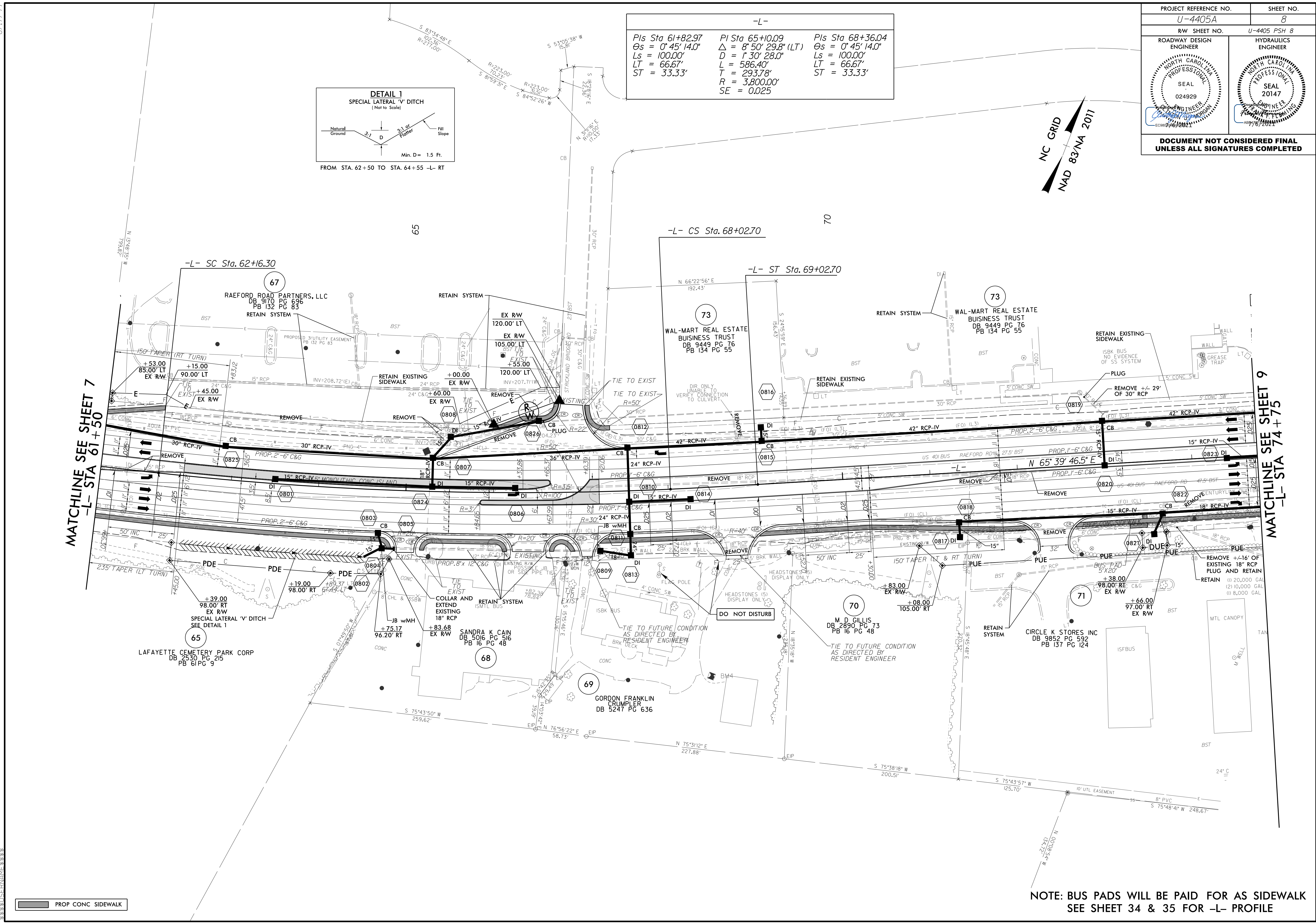
PROJECT REFERENCE NO. U-4405A	SHEET NO. 8
RW SHEET NO. U-4405 PSH 8	HYDRAULICS ENGINEER
ROADWAY DESIGN ENGINEER	SEAL 20147
SEAL 024929	SEAL 20147
DOCUMENT NOT CONSIDERED FINAL UNLESS ALL SIGNATURES COMPLETED	

-L-
 Pls Sta 61+82.97 PI Sta 65+10.09 Pls Sta 68+36.04
 Os = 0' 45' 14.0" Δ = 8' 50' 29.8" (LT) Os = 0' 45' 14.0"
 Ls = 100.00' L = 1' 30' 28.0" Ls = 100.00'
 LT = 66.67' T = 293.78' LT = 66.67'
 ST = 33.33' R = 3,800.00' ST = 33.33'
 SE = 0.025



MATCHLINE SEE SHEET 7
-L- STA 61+50

MATCHLINE SEE SHEET 9
-L- STA 74+75

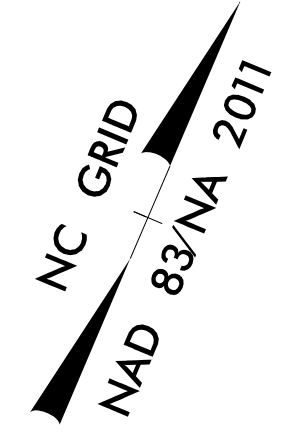


PROF CONC SIDEWALK

NOTE: BUS PADS WILL BE PAID FOR AS SIDEWALK
SEE SHEET 34 & 35 FOR -L- PROFILE

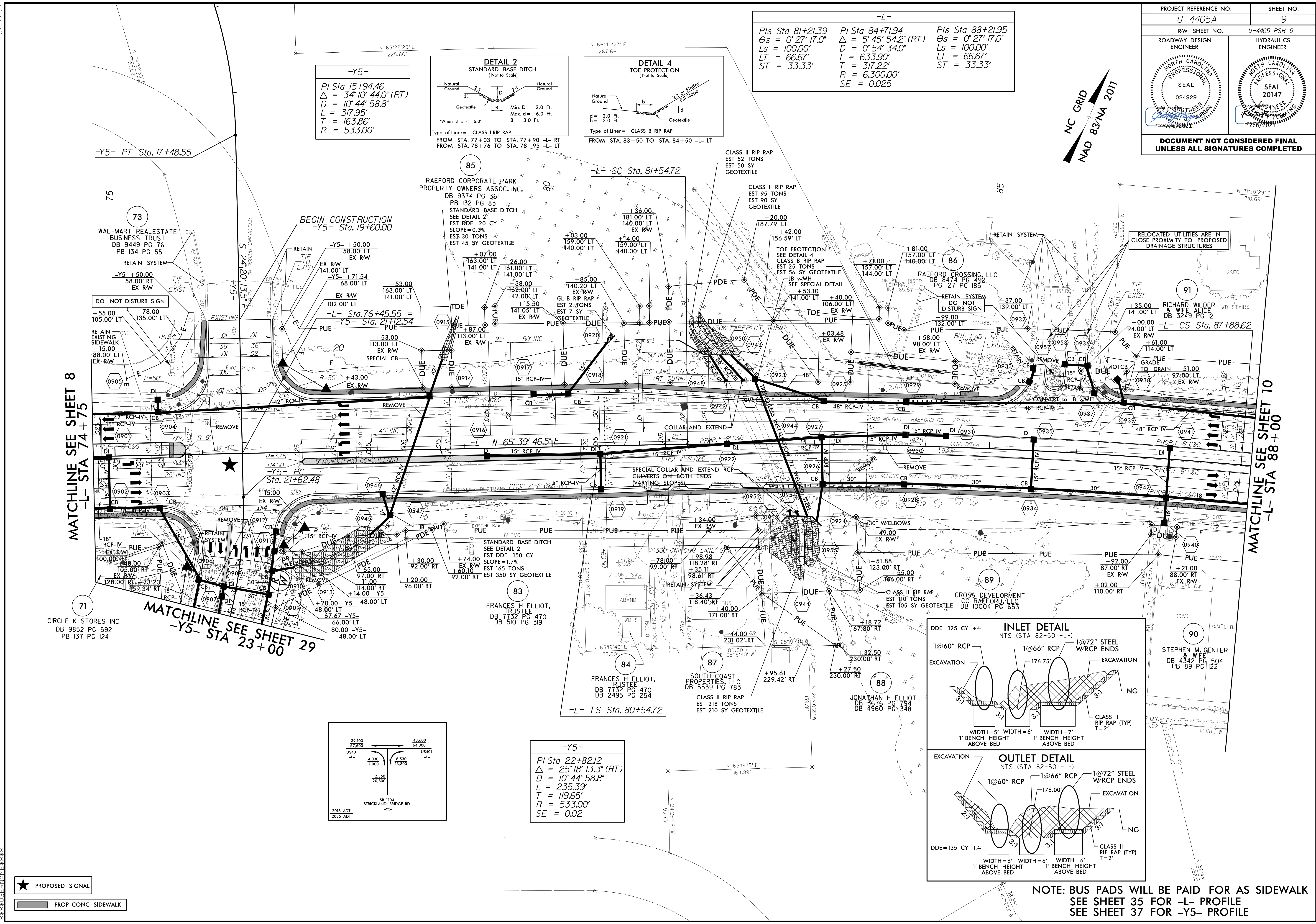
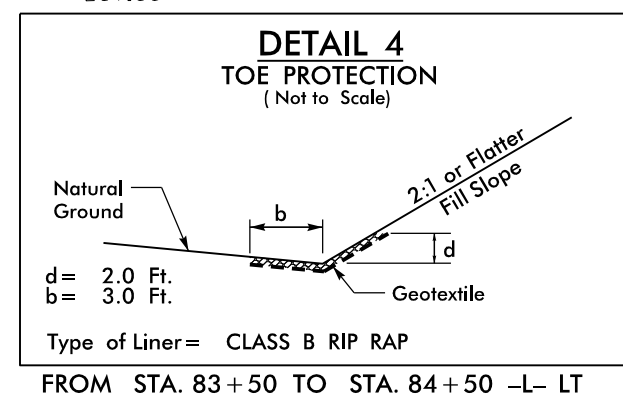
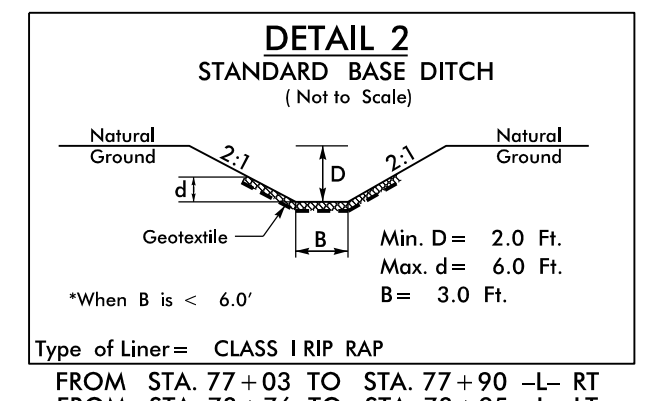
02-JUL-2021 12:12
 R:\Road\4405A\rdy_psh_08.dgn
 \$\$\$\$\$\$DISPERNAME\$\$\$\$\$\$

PROJECT REFERENCE NO. U-4405A	SHEET NO. 9
RW SHEET NO. U-4405 PSH 9	HYDRAULICS ENGINEER
ROADWAY DESIGN ENGINEER	SEAL 20147
DOCUMENT NOT CONSIDERED FINAL UNLESS ALL SIGNATURES COMPLETED	



-L-
 Pls Sta 81+21.39 Pl Sta 84+71.94 Pls Sta 88+21.95
 Δs = 0° 27' 17.0" Δ = 5° 45' 54.2" (RT) Δs = 0° 27' 17.0"
 Ls = 100.00' D = 0° 54' 34.0" Ls = 100.00'
 LT = 66.67' L = 633.90' LT = 66.67'
 ST = 33.33' T = 317.22' ST = 33.33'
 R = 6,300.00'
 SE = 0.025

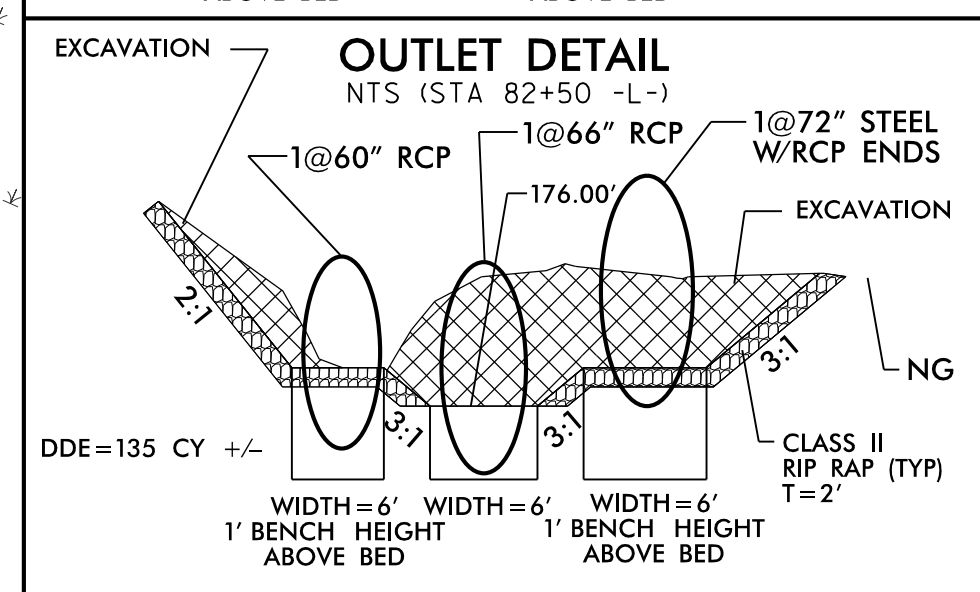
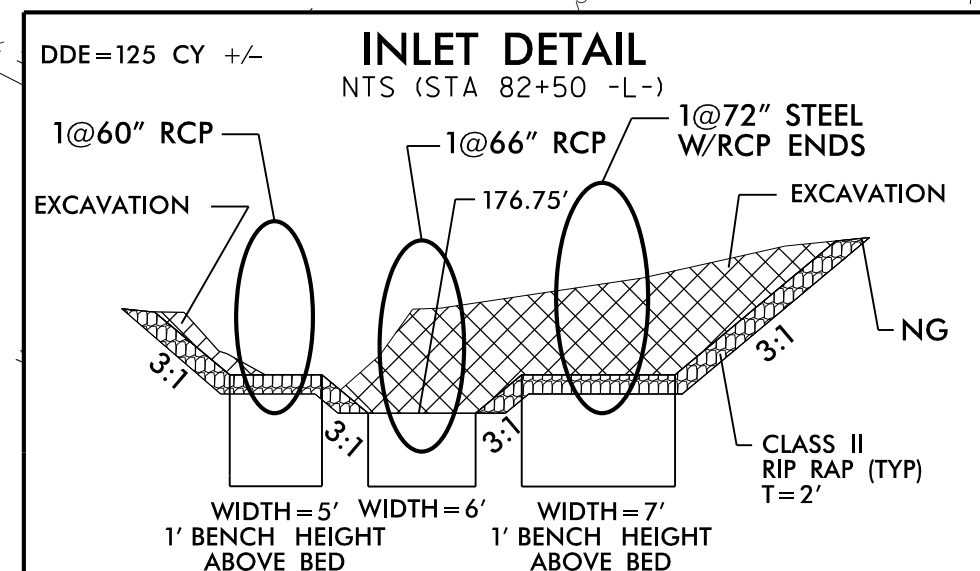
-Y5-
 Pl Sta 15+94.46
 Δ = 34° 10' 44.0" (RT)
 D = 10° 44' 58.8"
 L = 317.95'
 T = 163.86'
 R = 533.00'



MATCHLINE SEE SHEET 8
-L- STA 74 + 75

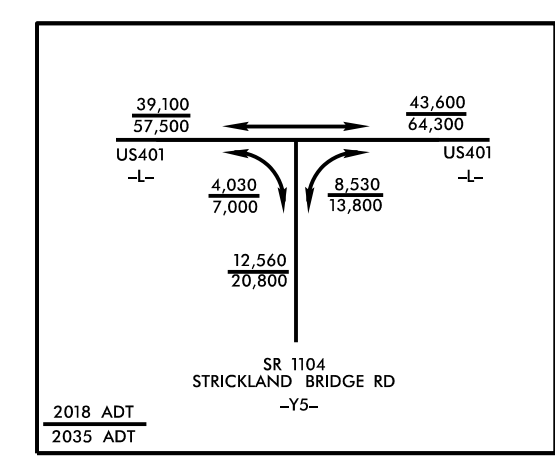
MATCHLINE SEE SHEET 10
-L- STA 88 + 00

MATCHLINE SEE SHEET 29
-Y5- STA 23 + 00



NOTE: BUS PADS WILL BE PAID FOR AS SIDEWALK
 SEE SHEET 35 FOR -L- PROFILE
 SEE SHEET 37 FOR -Y5- PROFILE

★ PROPOSED SIGNAL
 █ PROP CONC SIDEWALK

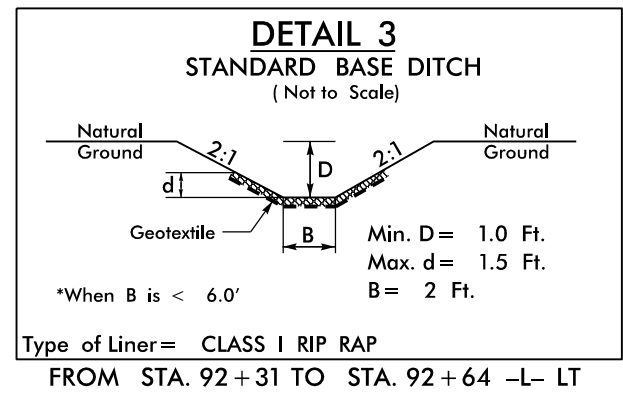


-Y5-
 Pl Sta 22+82.12
 Δ = 25° 18' 13.3" (RT)
 D = 10° 44' 58.8"
 L = 235.39'
 T = 119.65'
 R = 533.00'
 SE = 0.02

8/17/99
 02-JUL-2021 09:18
 C:\Users\ash_015\dwg\14405A_rdw_015.dwg
 \$\$\$\$\$\$DISPERSED\$\$\$\$\$\$
 2018 ADT
 2035 ADT

PROJECT REFERENCE NO. U-4405A	SHEET NO. 10
RW SHEET NO. U-4405 PSH 10	HYDRAULICS ENGINEER
ROADWAY DESIGN ENGINEER	SEAL 20147
SEAL 024929	SEAL 20147
DOCUMENT NOT CONSIDERED FINAL UNLESS ALL SIGNATURES COMPLETED	

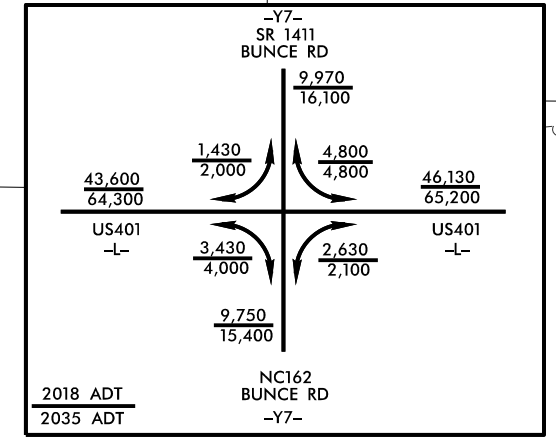
-Y7-
 PI Sta 12+57.36
 $\Delta = 20' 39' 00.6''$ (RT)
 $D = 6' 30' 00.0''$
 $L = 317.69'$
 $T = 160.59'$
 $R = 881.47'$



-L-
 PIs Sta 88+21.95
 $\Theta_s = 0' 27' 17.0''$
 $L_s = 100.00'$
 $LT = 66.67'$
 $ST = 33.33'$

STANDARD BASE DITCH
 W/CLASS 1 RIP RAP
 SEE DETAIL 3
 EST 65 TONS
 EST 120 CY GEOTEXTILE
 EST DDE = 30 CY
 SLOPE=6.0%

-Y6-
 PI Sta 12+56.41
 $\Delta = 10' 40' 14.2''$ (LT)
 $D = 11' 01' 06.3''$
 $L = 96.84'$
 $T = 48.56'$
 $R = 520.00'$



8.17.799
 09-UN-202119.37
 P:\Roadwork\4405A\rdy_psh_10.dgn
 \$\$\$\$\$\$DATE\$\$\$\$\$

MATCHLINE SEE SHEET 9
 -L- STA 88 + 00

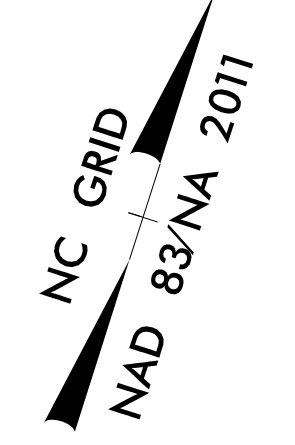
MATCHLINE SEE SHEET 11
 -L- STA 101 + 50

★ PROPOSED SIGNAL
 █ PROP CONC SIDEWALK

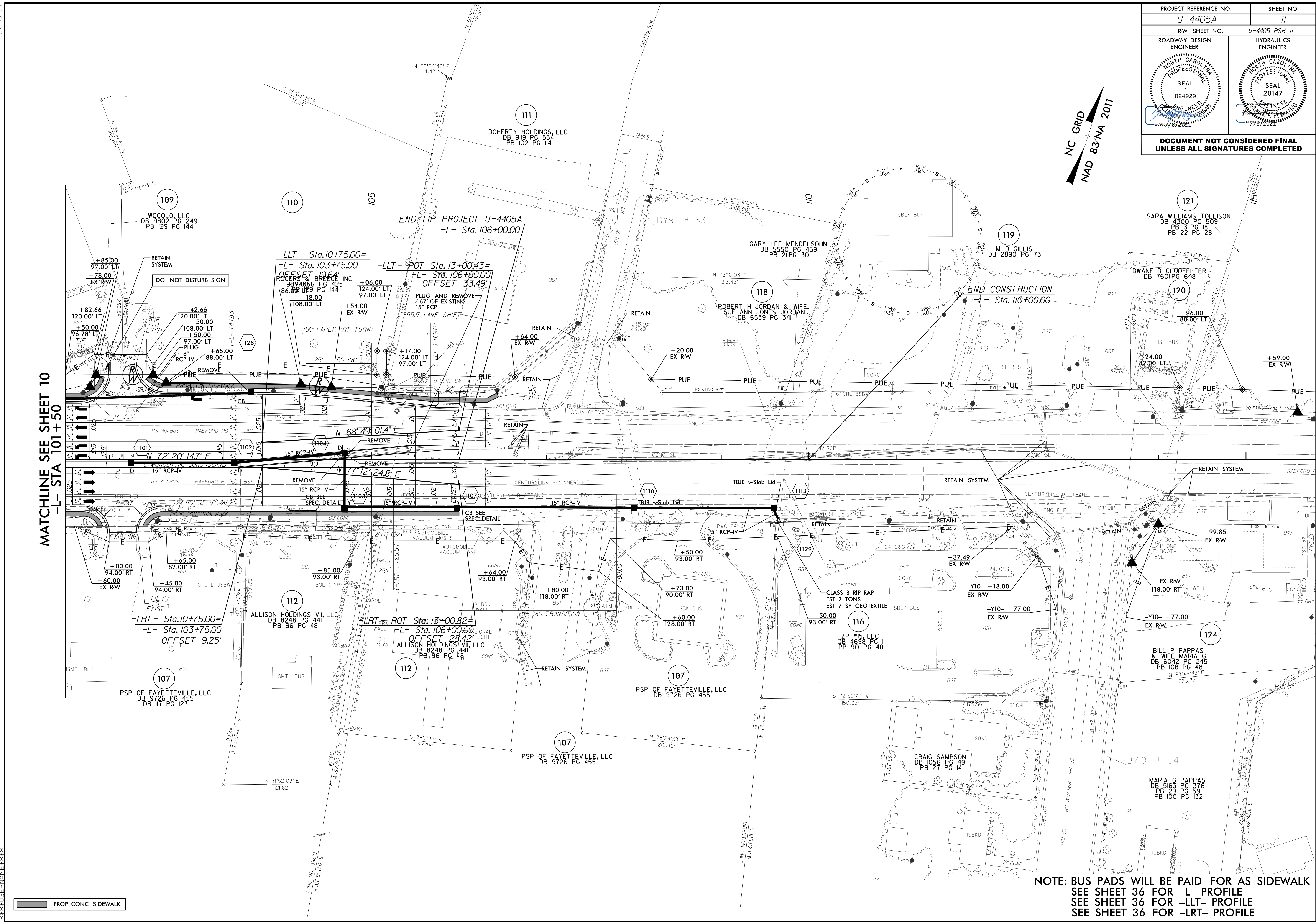
NOTE: BUS PADS WILL BE PAID FOR AS SIDEWALK
 SEE SHEET 35 & 36 FOR -L- PROFILE
 SEE SHEET 38 FOR -Y6- PROFILE
 SEE SHEET 38 FOR -Y7- PROFILE
 SEE SHEET 2B-1 FOR INTERSECTION DETAILS

8.17.17.99

PROJECT REFERENCE NO. U-4405A	SHEET NO. 11
RW SHEET NO. U-4405 PSH 11	HYDRAULICS ENGINEER
ROADWAY DESIGN ENGINEER	HYDRAULICS ENGINEER
DOCUMENT NOT CONSIDERED FINAL UNLESS ALL SIGNATURES COMPLETED	



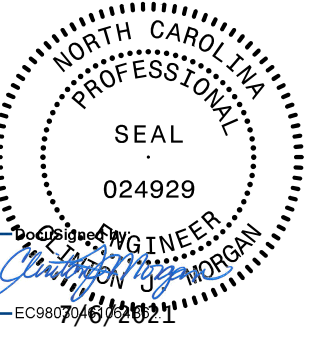

MATCHLINE SEE SHEET 10
-L- STA 101+50



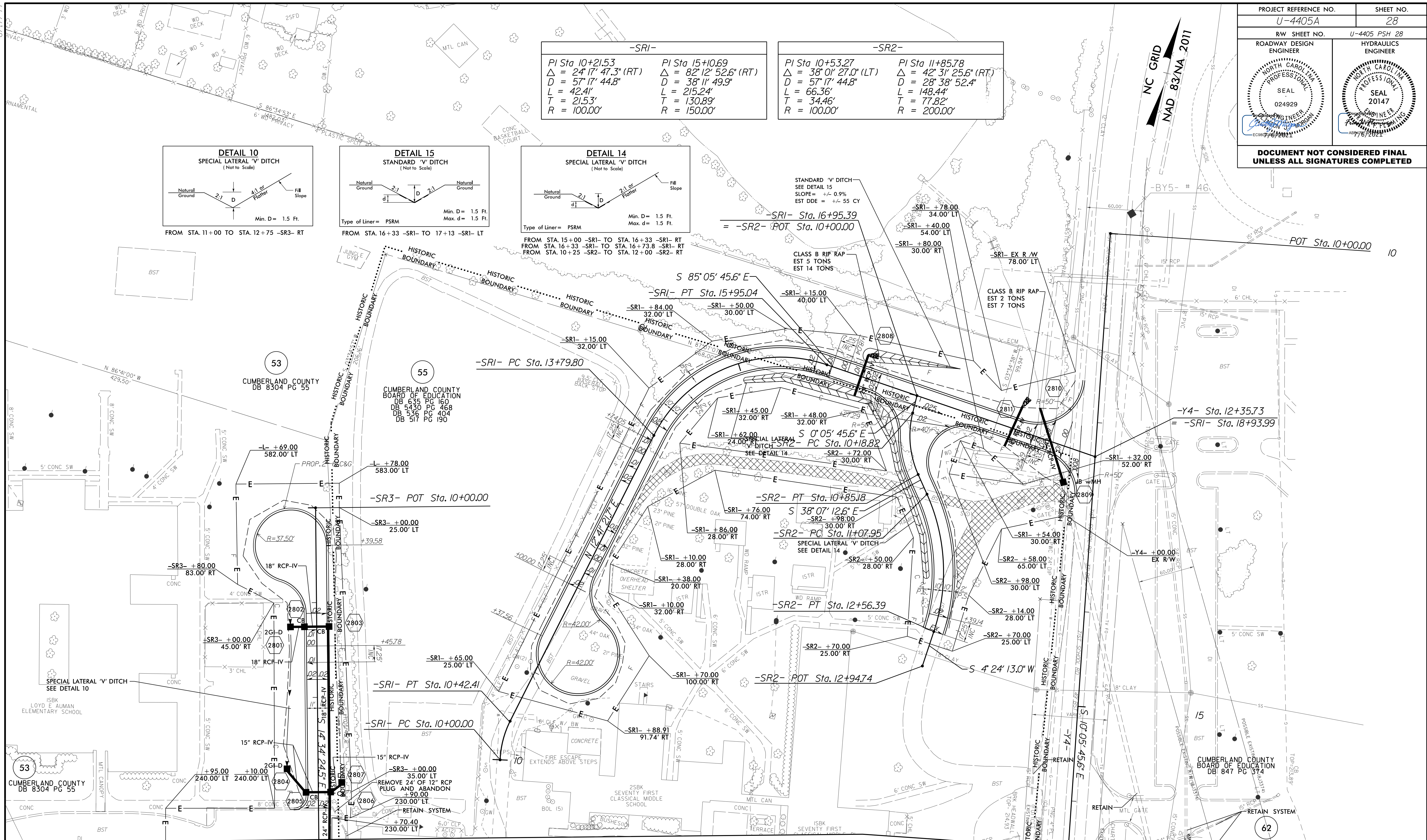
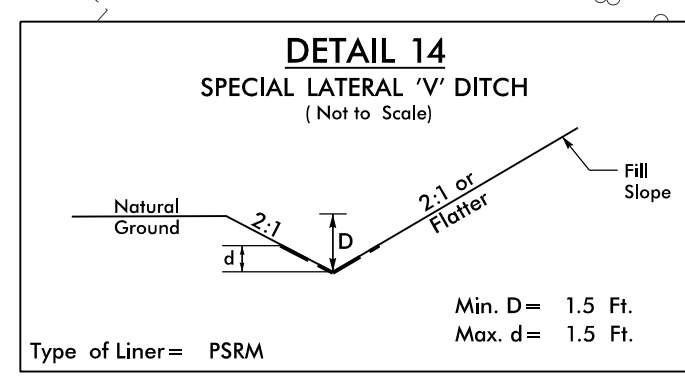
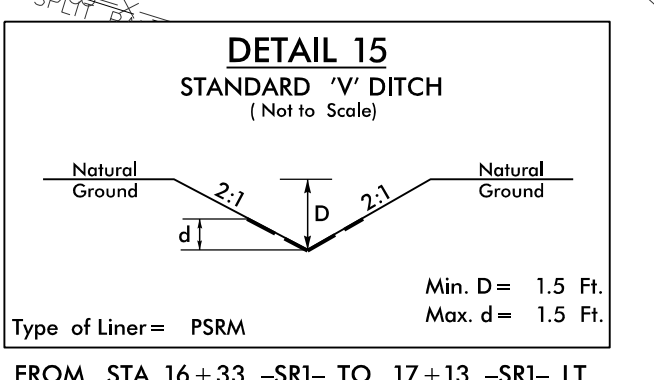
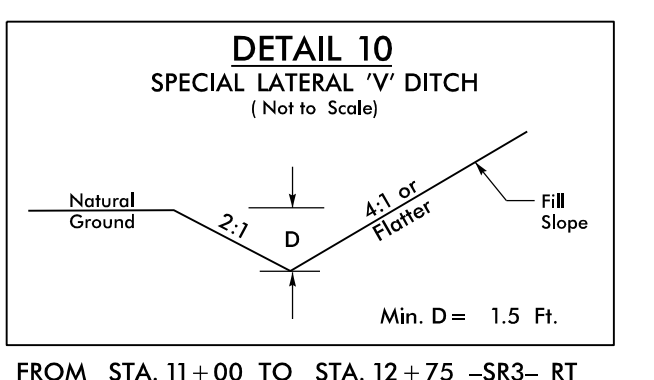
PROP CONC. SIDEWALK

NOTE: BUS PADS WILL BE PAID FOR AS SIDEWALK
SEE SHEET 36 FOR -L- PROFILE
SEE SHEET 36 FOR -LLT- PROFILE
SEE SHEET 36 FOR -LRT- PROFILE

09-11-2017 13:15 U:\4405A_rdw.psh.11.dgn
 RD:\Roadwork\4405A\DWG\PSH\11.dgn
 \$\$\$\$\$\$DISPERNAME\$\$\$\$\$\$

PROJECT REFERENCE NO. U-4405A	SHEET NO. 28
R/W SHEET NO. U-4405 PSH 28	HYDRAULICS ENGINEER
ROADWAY DESIGN ENGINEER	SEAL 20147
 	
DOCUMENT NOT CONSIDERED FINAL UNLESS ALL SIGNATURES COMPLETED	

-SRI-		-SR2-	
PI Sta 10+21.53 Δ = 24° 17' 47.3" (RT) D = 57' 17" 44.8" L = 42.41' T = 21.53' R = 100.00'	PI Sta 15+0.69 Δ = 82° 12' 52.6" (RT) D = 38' 11" 49.9" L = 215.24' T = 130.89' R = 150.00'	PI Sta 10+53.27 Δ = 38° 01' 27.0" (LT) D = 57' 17" 44.8" L = 66.36' T = 34.46' R = 100.00'	PI Sta 11+85.78 Δ = 42° 31' 25.6" (RT) D = 28' 38" 52.4" L = 148.44' T = 77.82' R = 200.00'



MATCHLINE SEE SHEET 6
-SR3- STA 13+50

MATCHLINE SEE SHEET 6
-Y4- STA 16+50

NOTE: COORDINATION WITH RESIDENT ENGINEER
IS REQUIRED PRIOR TO ANY TREE
REMOVAL ON PARCEL 55

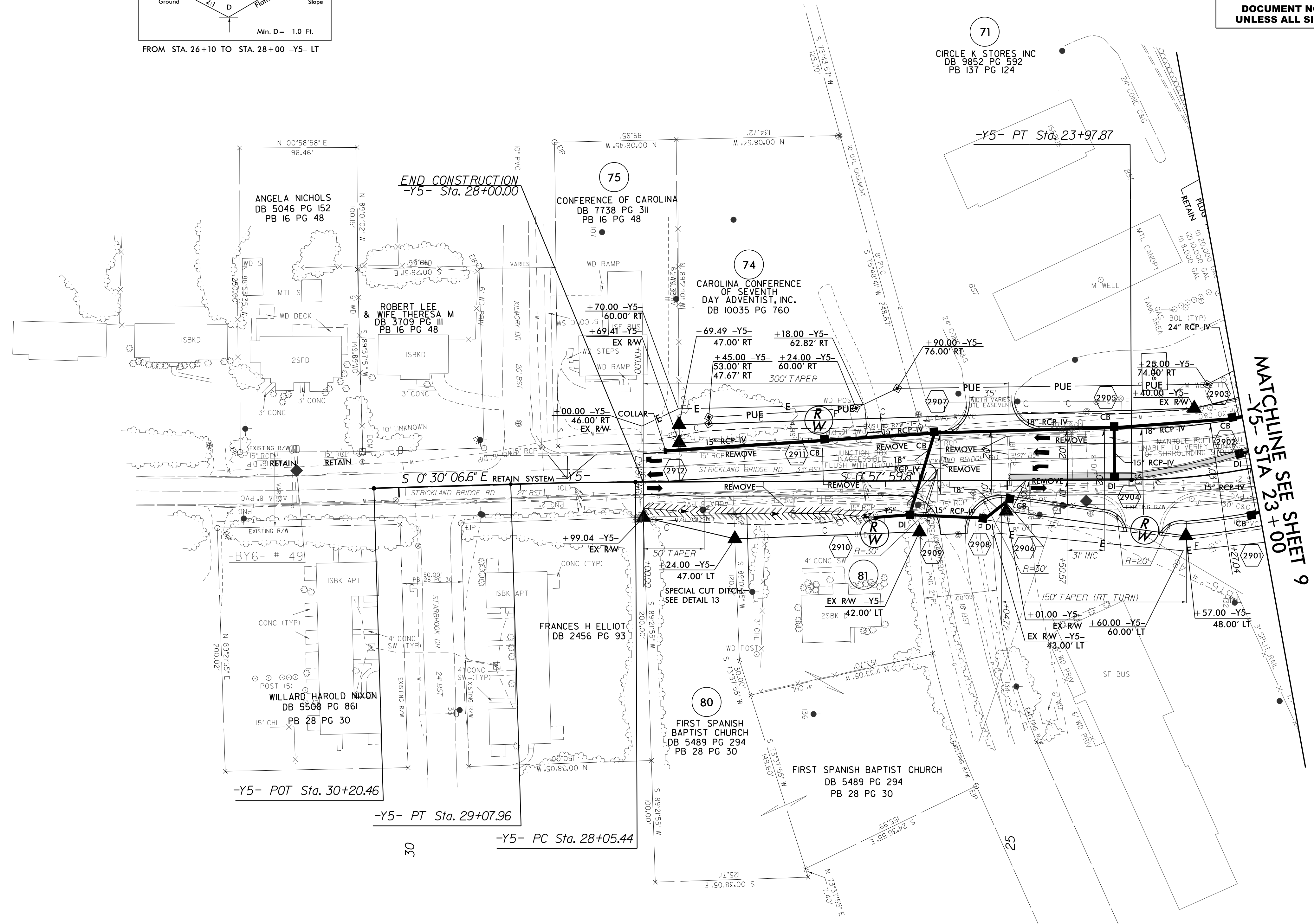
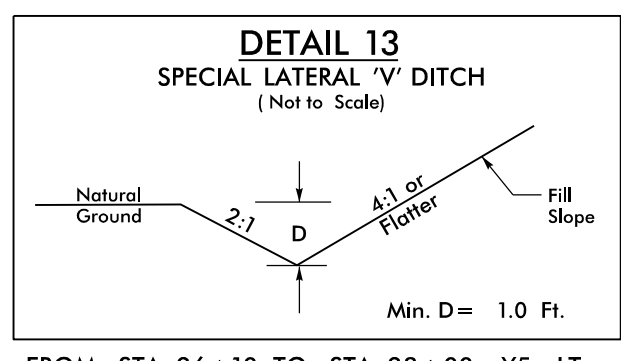
NOTE: SEE SHEET 38 FOR -SRI- PROFILE
SEE SHEET 38 FOR -SR2- PROFILE
SEE SHEET 38 FOR -SR3- PROFILE

09-UNL-2021(7)16
 R3-ROADWAY-PSH-28.dgn
 U:\4405A_rdw\ps_h_28.dgn
 11/15/2021 10:58:33 AM

8/17/99

PROJECT REFERENCE NO. U-4405A	SHEET NO. 29
RW SHEET NO. U-4405 PSH 29	
ROADWAY DESIGN ENGINEER	HYDRAULICS ENGINEER
DOCUMENT NOT CONSIDERED FINAL UNLESS ALL SIGNATURES COMPLETED	

NC GRID
NAD 83/NA 2011



MATCHLINE SEE SHEET 9
-Y5- STA 23+00

-Y5-	
PI Sta 28+56.71	PI Sta 22+82.12
$\Delta = 1' 28' 06.4''$ (LT)	$\Delta = 25' 18' 13.3''$ (RT)
$D = 1' 25' 56.6''$	$D = 10' 44' 58.8''$
$L = 102.52'$	$L = 235.39'$
$T = 51.26'$	$T = 119.65'$
$R = 4,000.00'$	$R = 533.00'$
	$SE = 0.02$

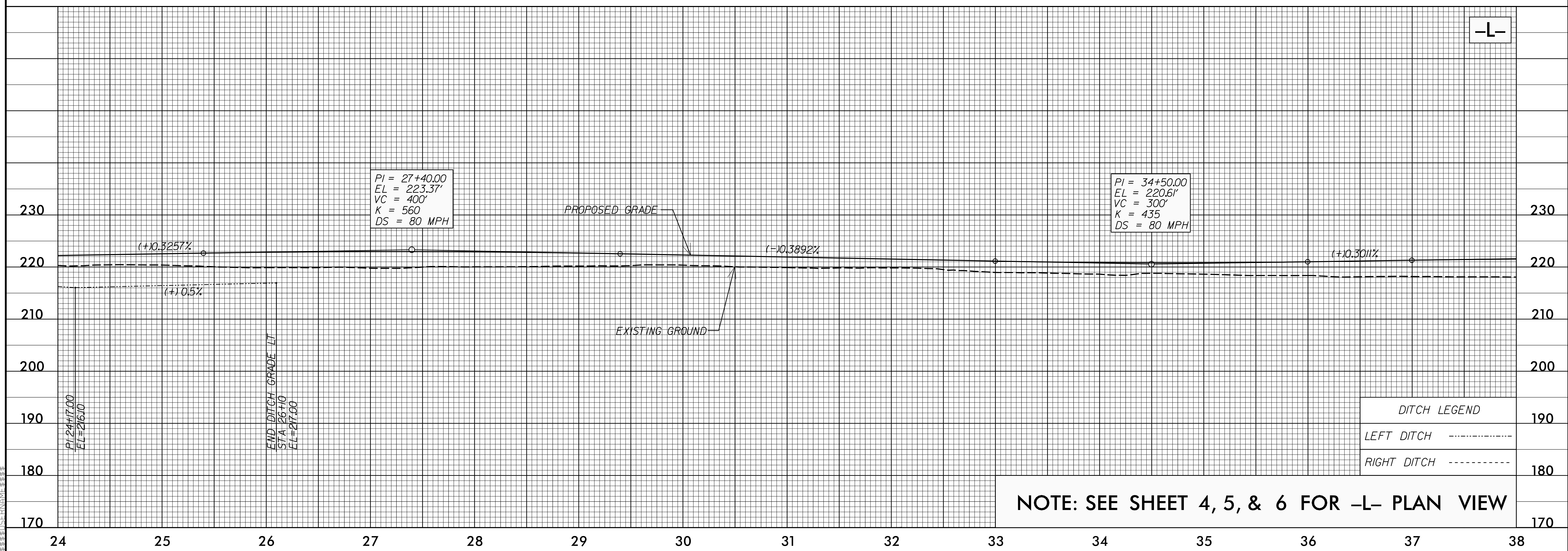
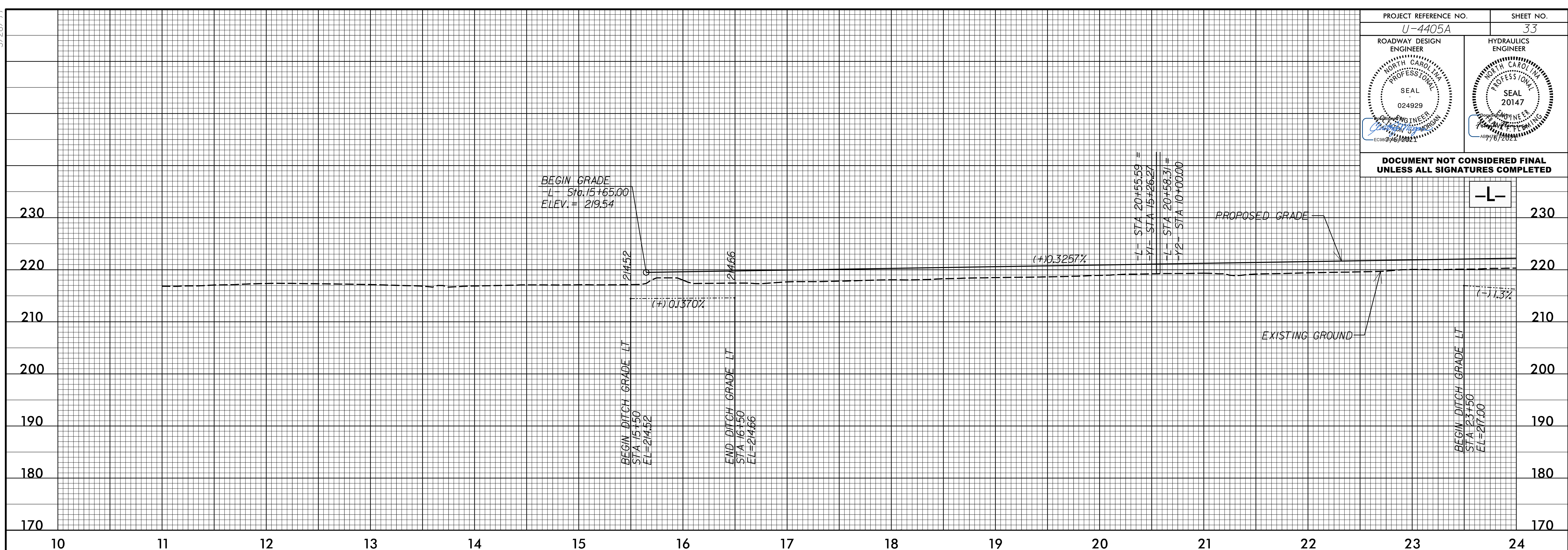
NOTE: SEE SHEET 37 FOR -Y5- PROFILE

I:\JUN-2021\0304
PC-ROAD\PSH\U-4405A_rdw_psh_29.dgn
\$\$\$\$DISPERSEDNAME\$\$\$\$

5/28/21

PROJECT REFERENCE NO. U-4405A	SHEET NO. 33
ROADWAY DESIGN ENGINEER SEAL 024929 NORTH CAROLINA PROFESSIONAL ENGINEER EC06976/2021	HYDRAULICS ENGINEER SEAL 20147 NORTH CAROLINA PROFESSIONAL ENGINEER AD716/2021

DOCUMENT NOT CONSIDERED FINAL UNLESS ALL SIGNATURES COMPLETED



DITCH LEGEND	
LEFT DITCH	-----
RIGHT DITCH	-----

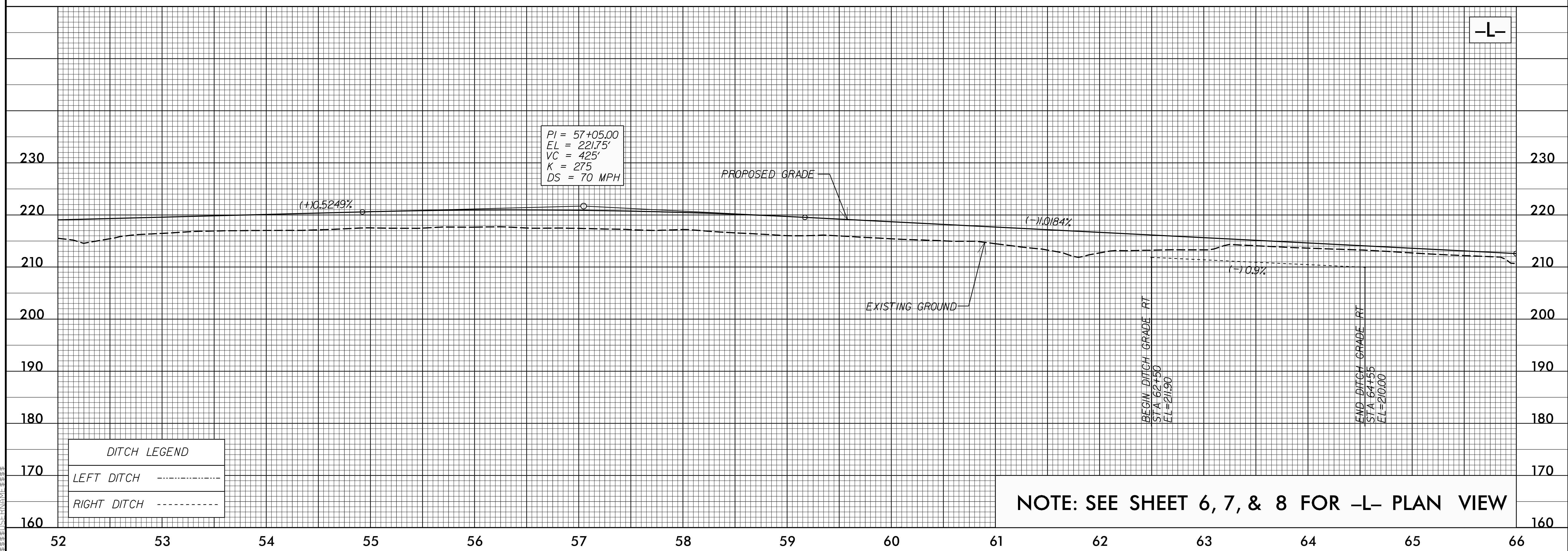
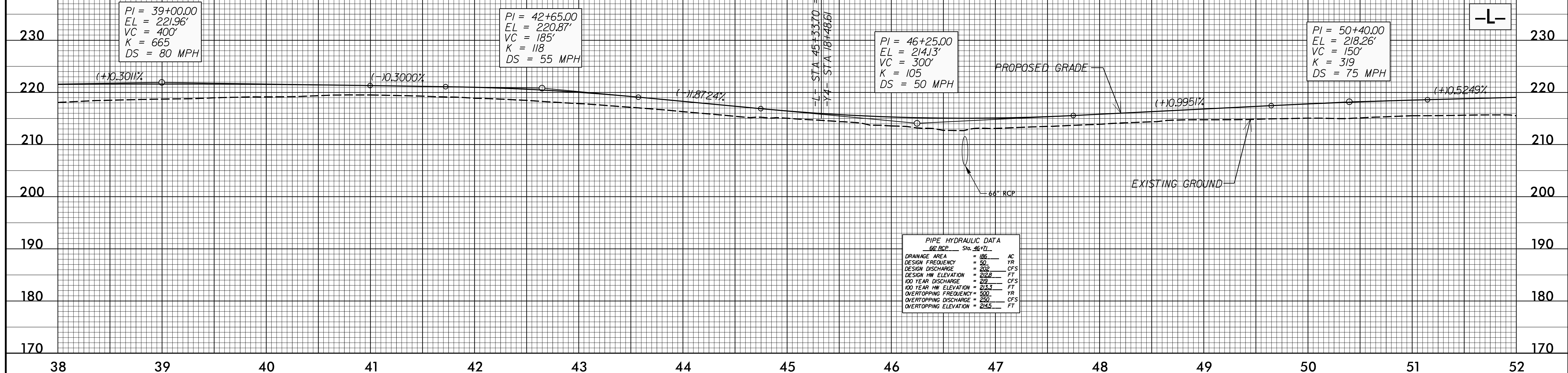
NOTE: SEE SHEET 4, 5, & 6 FOR -L- PLAN VIEW

10 JUN 2021 15:38
C:\Users\jg538\OneDrive\Documents\U-4405A_rdy_of1_psh.dgn
\$\$\$\$\$PROGRAM\$\$\$\$\$

5/28/21

PROJECT REFERENCE NO. U-4405A	SHEET NO. 34
ROADWAY DESIGN ENGINEER NORTH CAROLINA PROFESSIONAL SEAL 024929	HYDRAULICS ENGINEER NORTH CAROLINA PROFESSIONAL SEAL 20147

DOCUMENT NOT CONSIDERED FINAL UNLESS ALL SIGNATURES COMPLETED

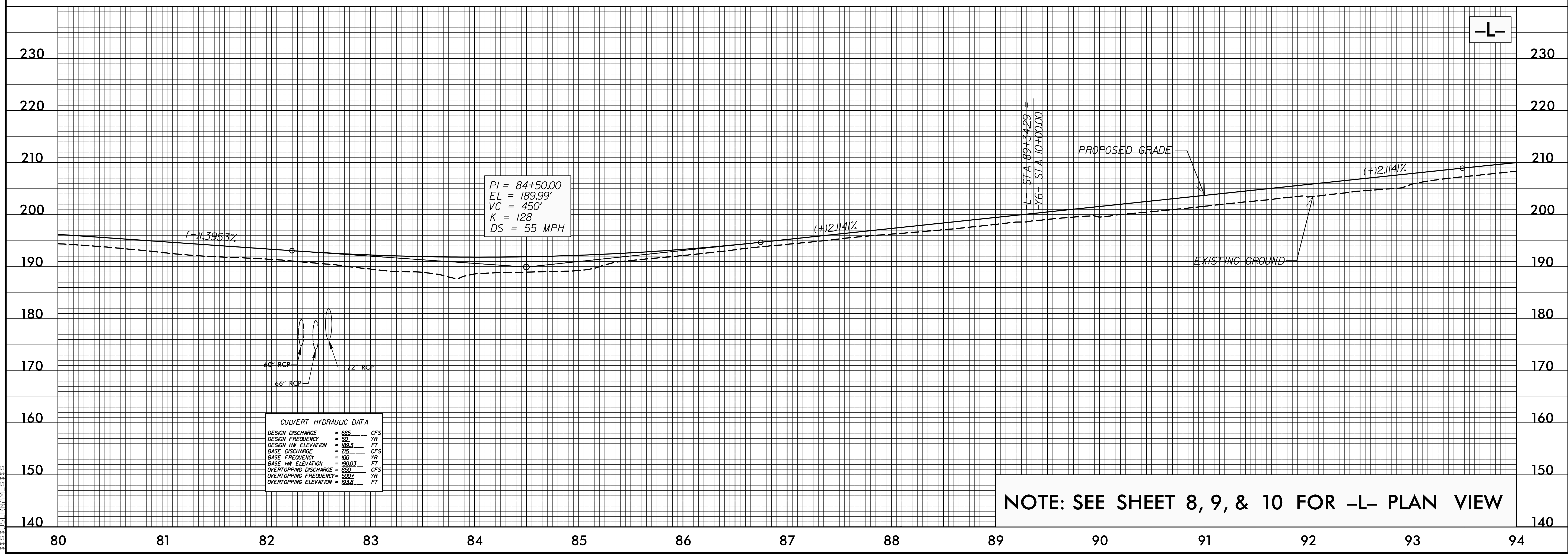
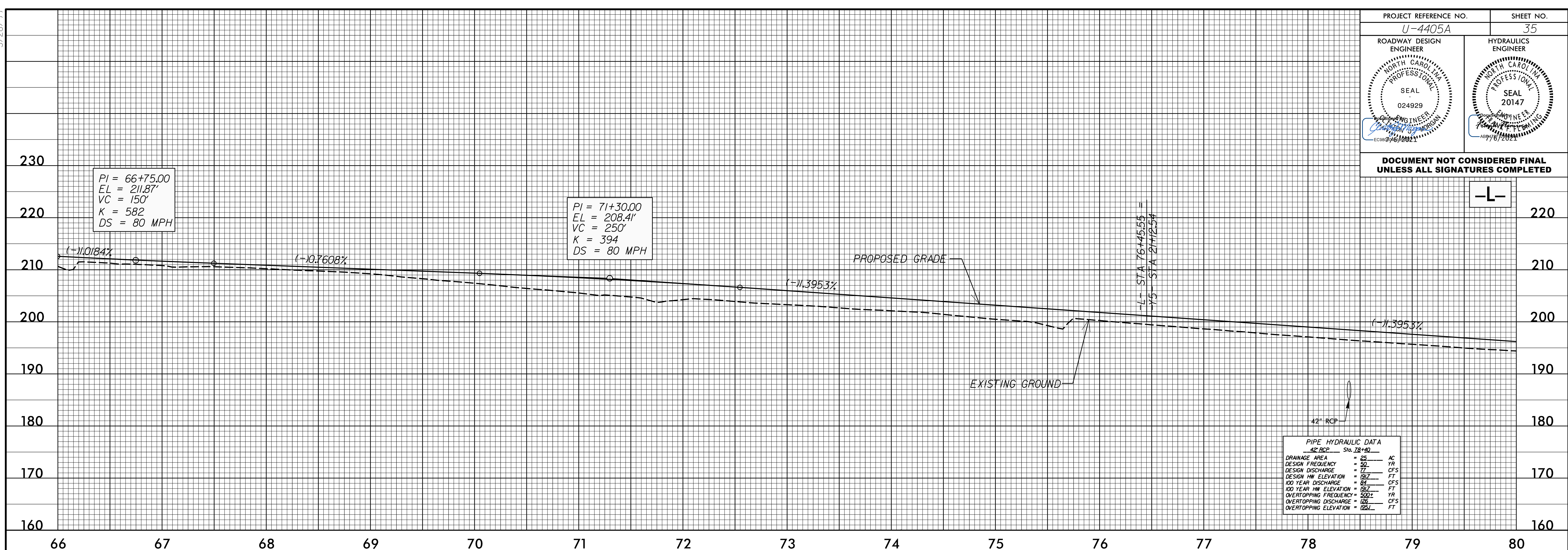


10 JUN 2021 14:39 U:\4405A_rcdj_e\1_psh.dgn

5/28/21

PROJECT REFERENCE NO. U-4405A	SHEET NO. 35
ROADWAY DESIGN ENGINEER SEAL 024929	HYDRAULICS ENGINEER SEAL 20147

**DOCUMENT NOT CONSIDERED FINAL
UNLESS ALL SIGNATURES COMPLETED**



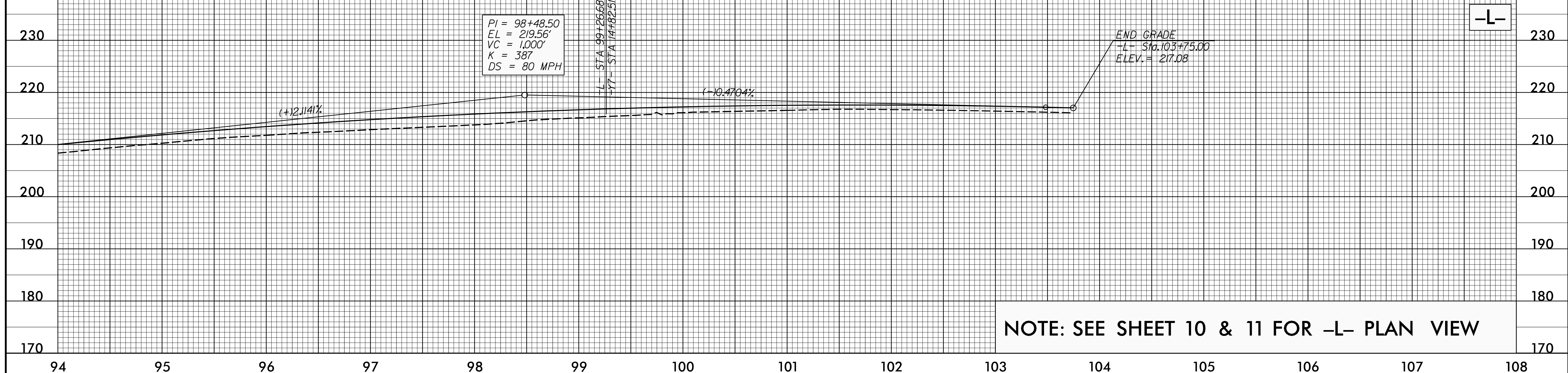
I:\JUN-2021\1511\10\4405A\rdj\p1_psh.dgn
 5/28/21 10:41 AM
 RDJ

5/28/21

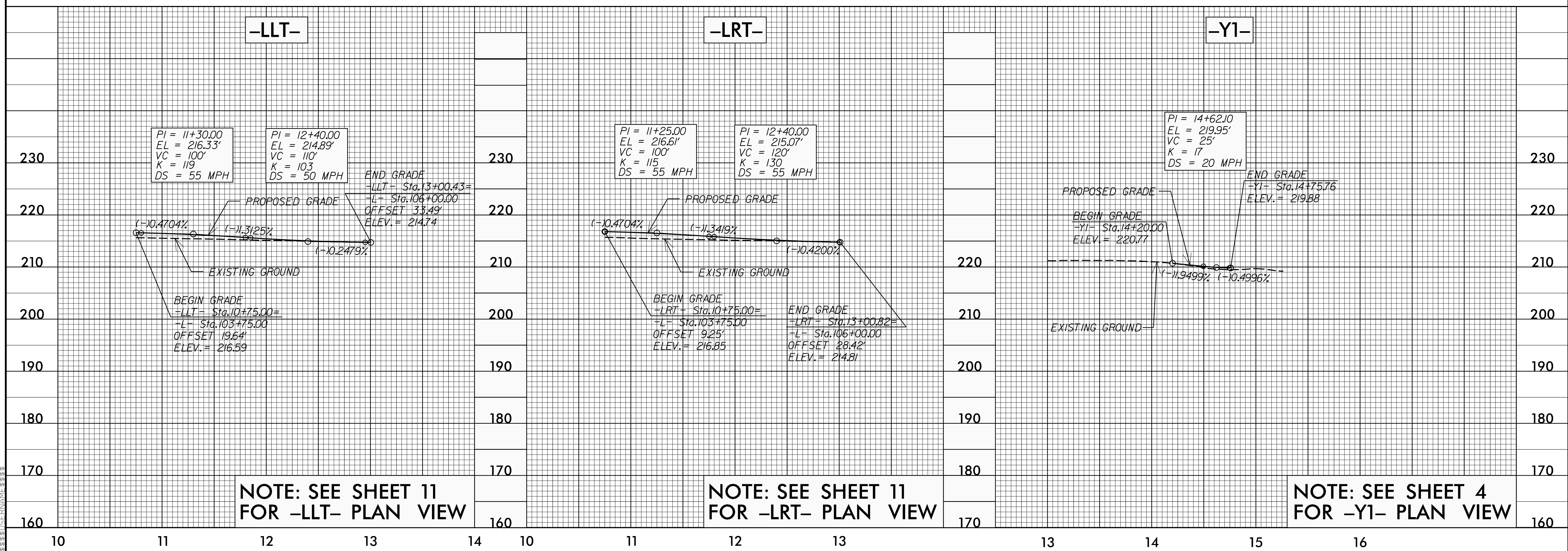
PROJECT REFERENCE NO. U-4405A	SHEET NO. 36
ROADWAY DESIGN ENGINEER SEAL 20147 024929	HYDRAULICS ENGINEER SEAL 20147

EC06976/2021

DOCUMENT NOT CONSIDERED FINAL UNLESS ALL SIGNATURES COMPLETED



NOTE: SEE SHEET 10 & 11 FOR -L- PLAN VIEW



NOTE: SEE SHEET 11 FOR -LLT- PLAN VIEW

NOTE: SEE SHEET 11 FOR -LRT- PLAN VIEW

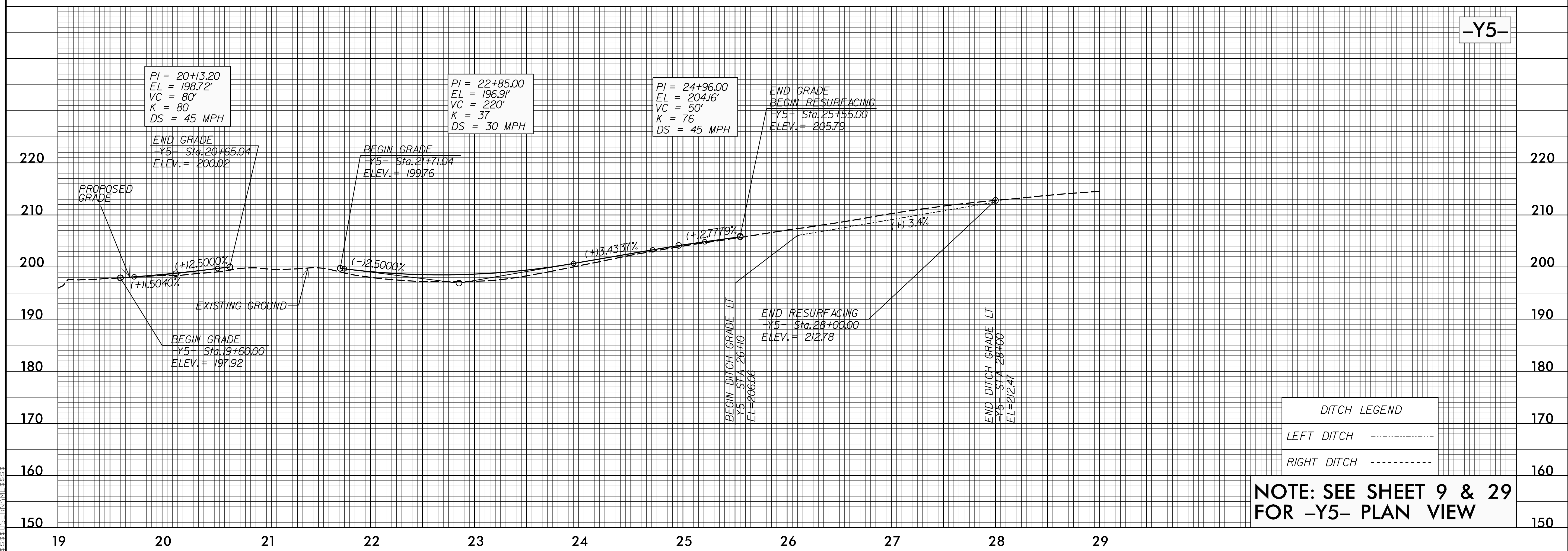
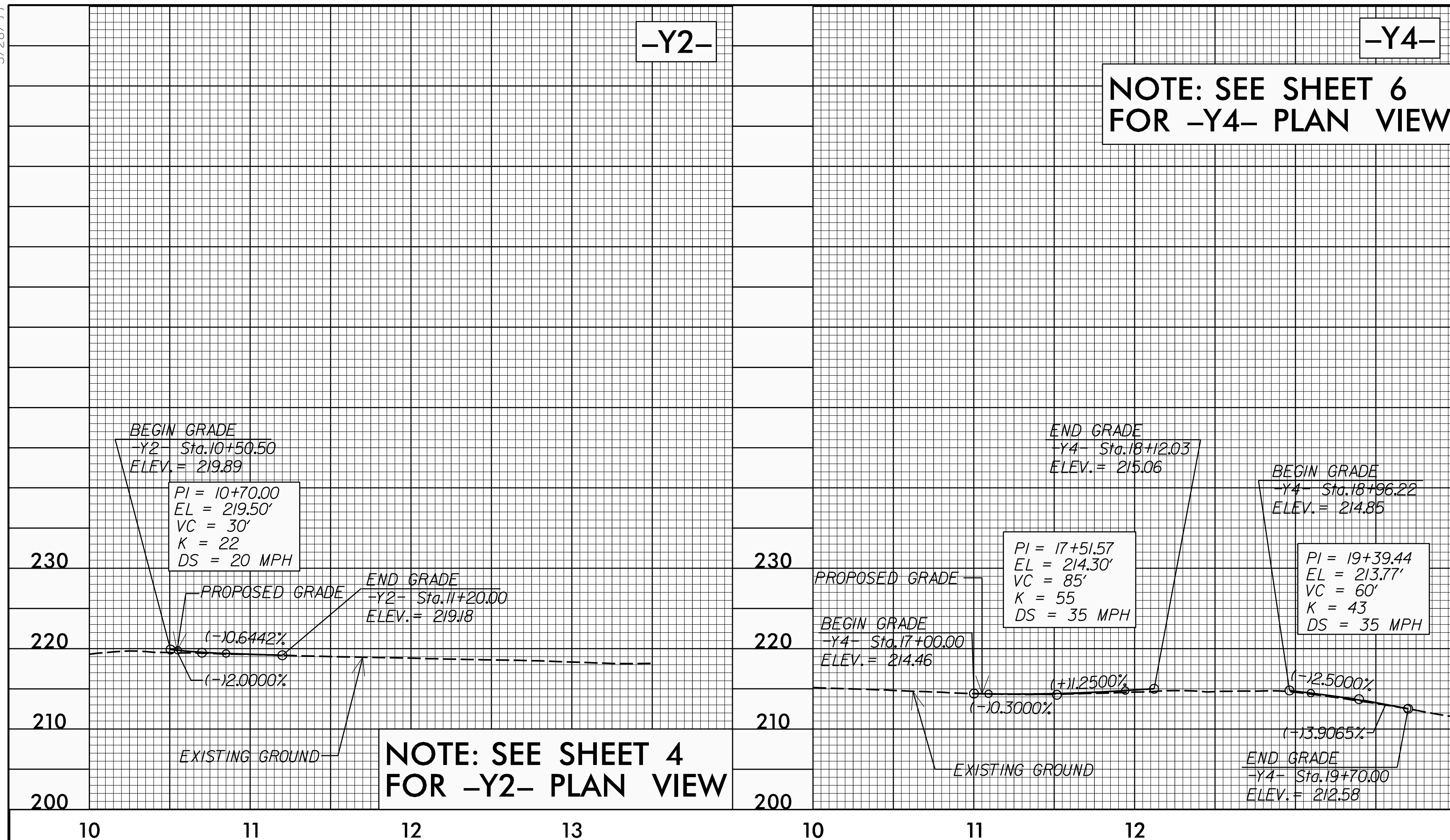
NOTE: SEE SHEET 4 FOR -Y1- PLAN VIEW

10 JUN 2021 10:46 AM C:\Users\j405A_rdy\of1_psh.dgn

5/28/21

PROJECT REFERENCE NO. U-4405A	SHEET NO. 37
ROADWAY DESIGN ENGINEER SEAL 20147 EC06976/2021	HYDRAULICS ENGINEER SEAL 20147 AD976/2021

DOCUMENT NOT CONSIDERED FINAL UNLESS ALL SIGNATURES COMPLETED

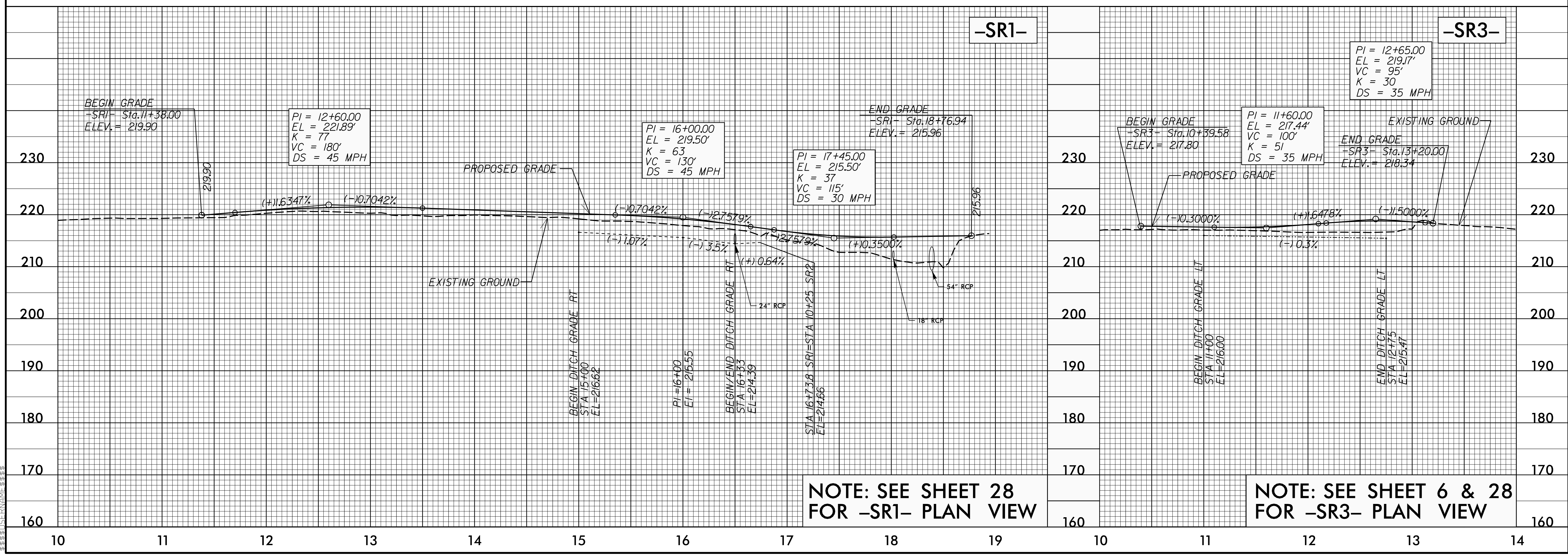
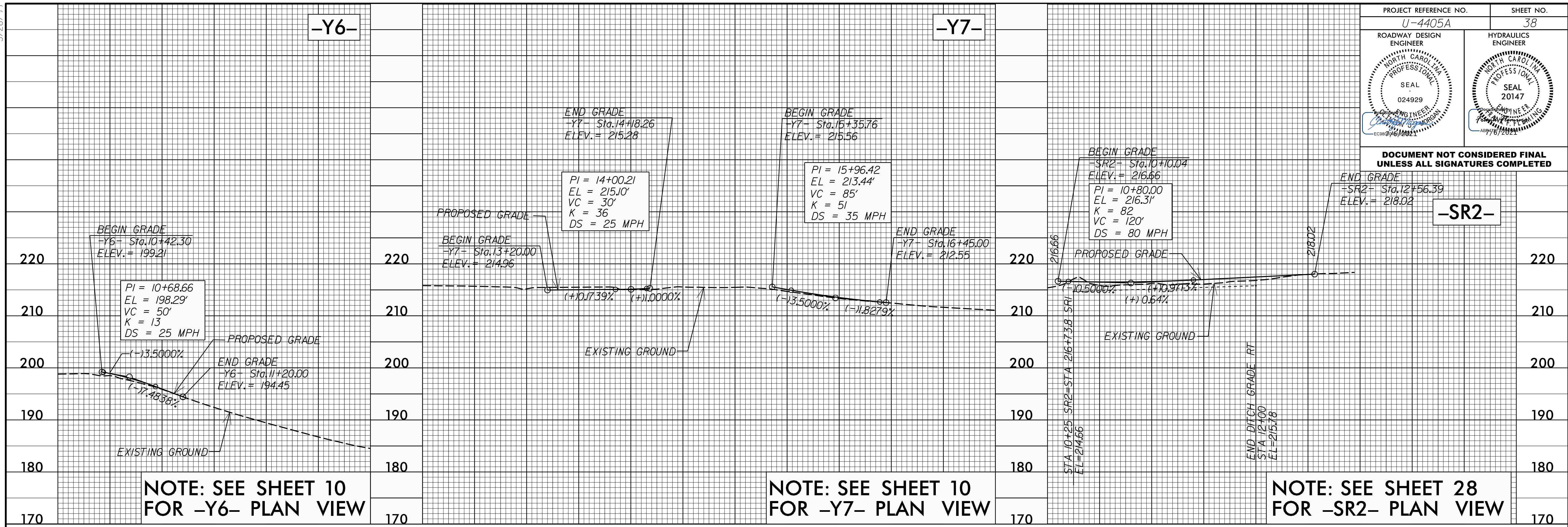


10 JUN 2021 15:48 P:\Projects\4405A\rdy\of1_psh.dgn

5/28/99

PROJECT REFERENCE NO. U-4405A	SHEET NO. 38
ROADWAY DESIGN ENGINEER NORTH CAROLINA PROFESSIONAL SEAL 024929	HYDRAULICS ENGINEER NORTH CAROLINA PROFESSIONAL SEAL 20147

DOCUMENT NOT CONSIDERED FINAL UNLESS ALL SIGNATURES COMPLETED

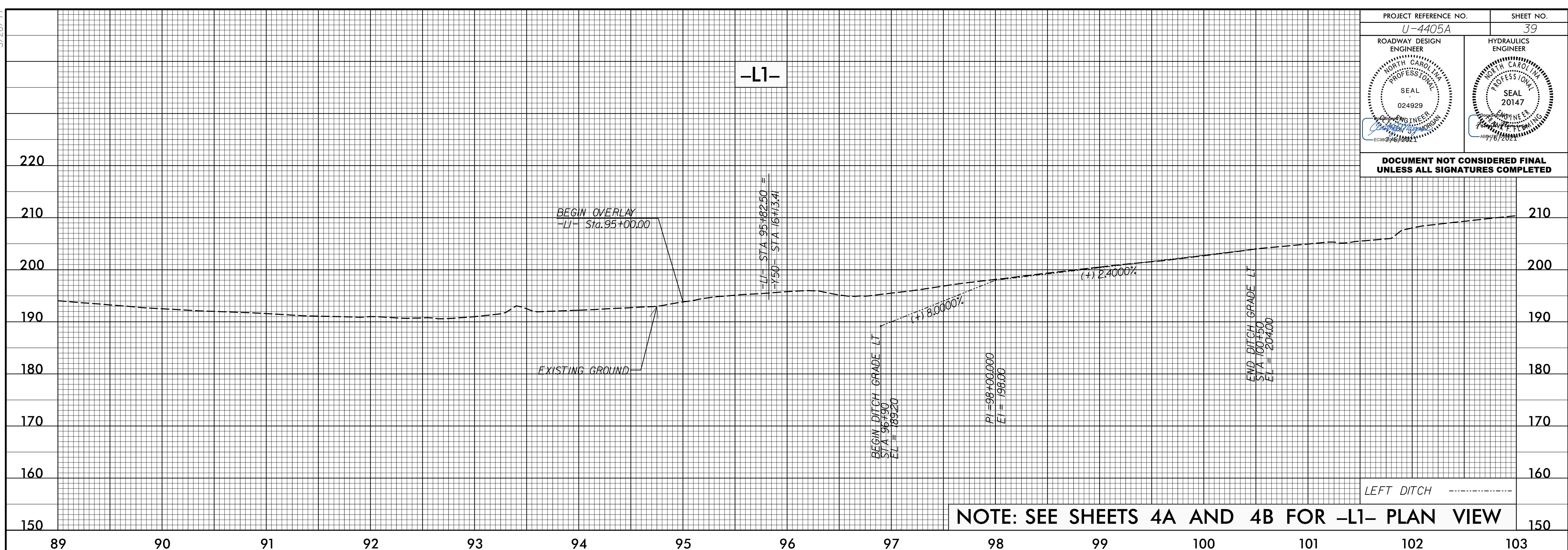


10 JUN 2021 10:51 AM C:\Users\j4405A_rdy\of1_psh.dgn

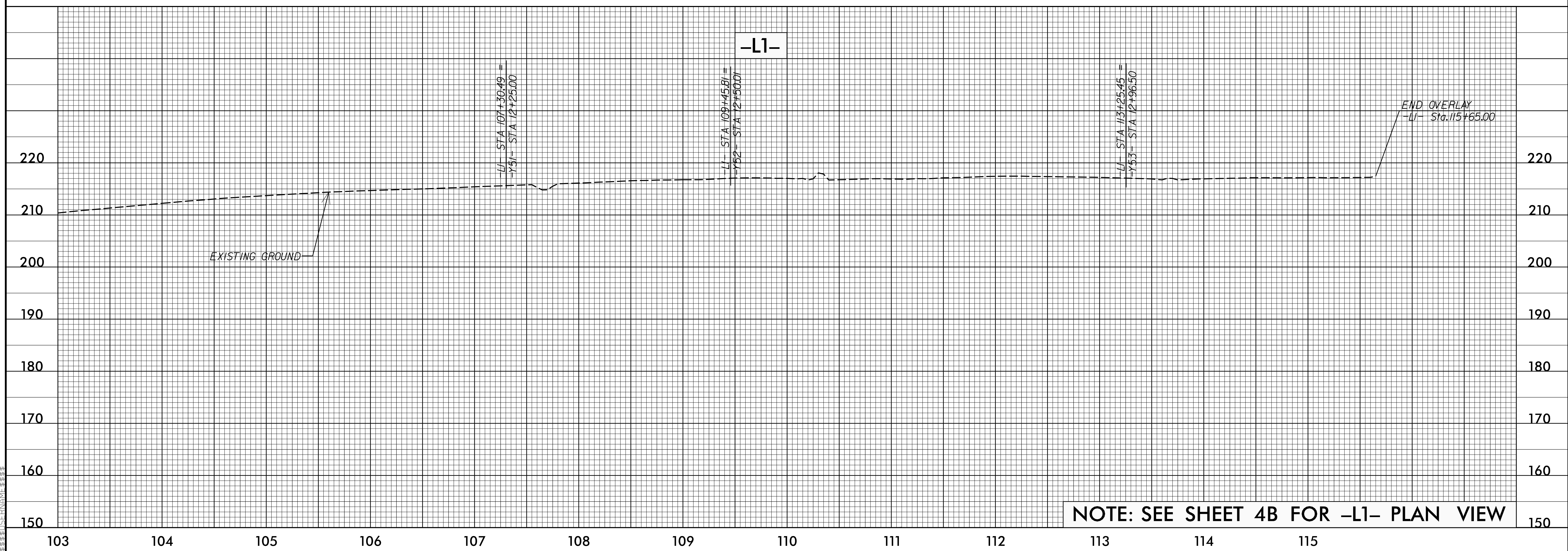
5/28/99

PROJECT REFERENCE NO. U-4405A	SHEET NO. 39
ROADWAY DESIGN ENGINEER	HYDRAULICS ENGINEER

DOCUMENT NOT CONSIDERED FINAL UNLESS ALL SIGNATURES COMPLETED



NOTE: SEE SHEETS 4A AND 4B FOR -L1- PLAN VIEW



NOTE: SEE SHEET 4B FOR -L1- PLAN VIEW

10 JUN 2021 16:55 P:\4405A\4405A_rdy_of1_psh.dgn