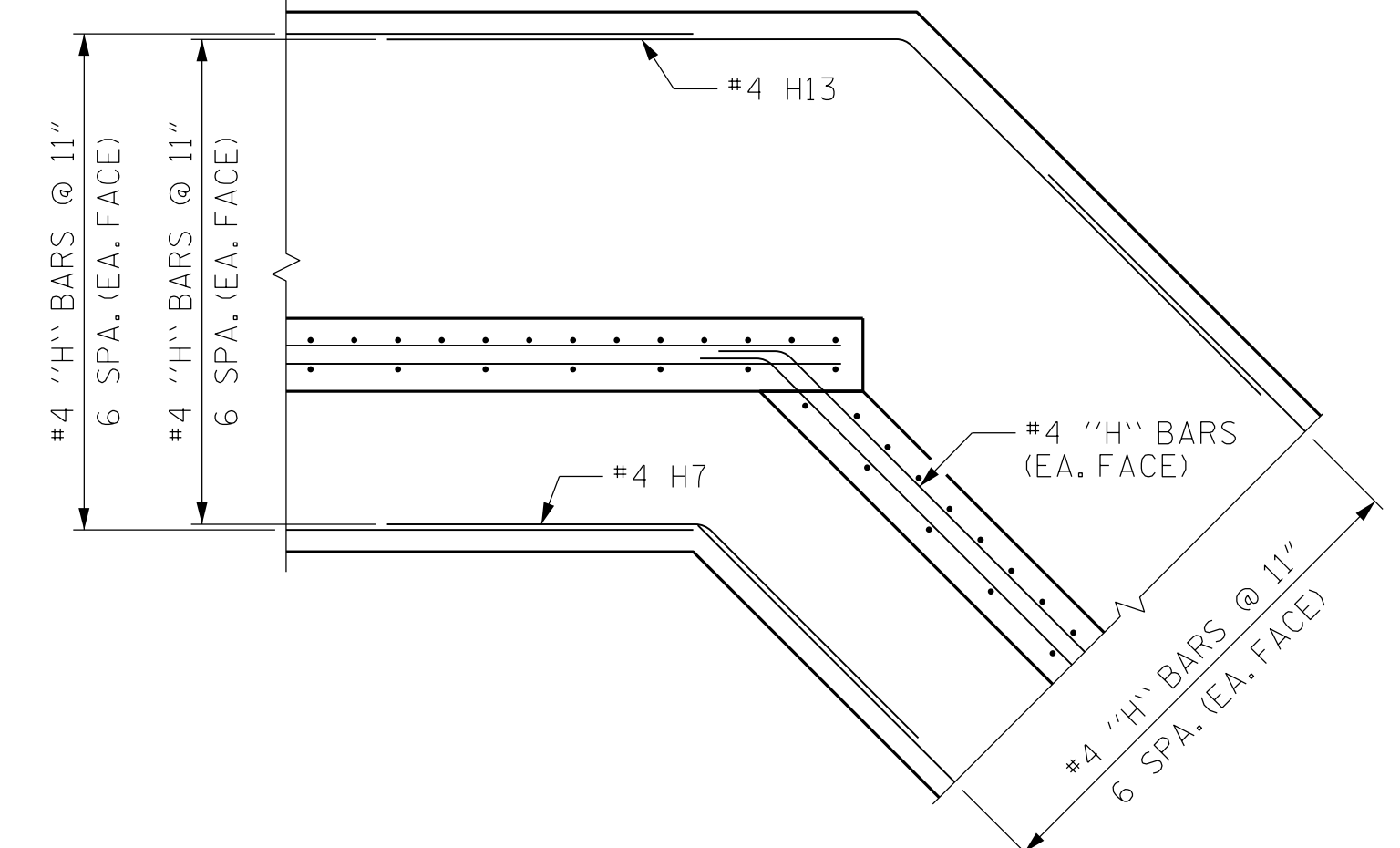
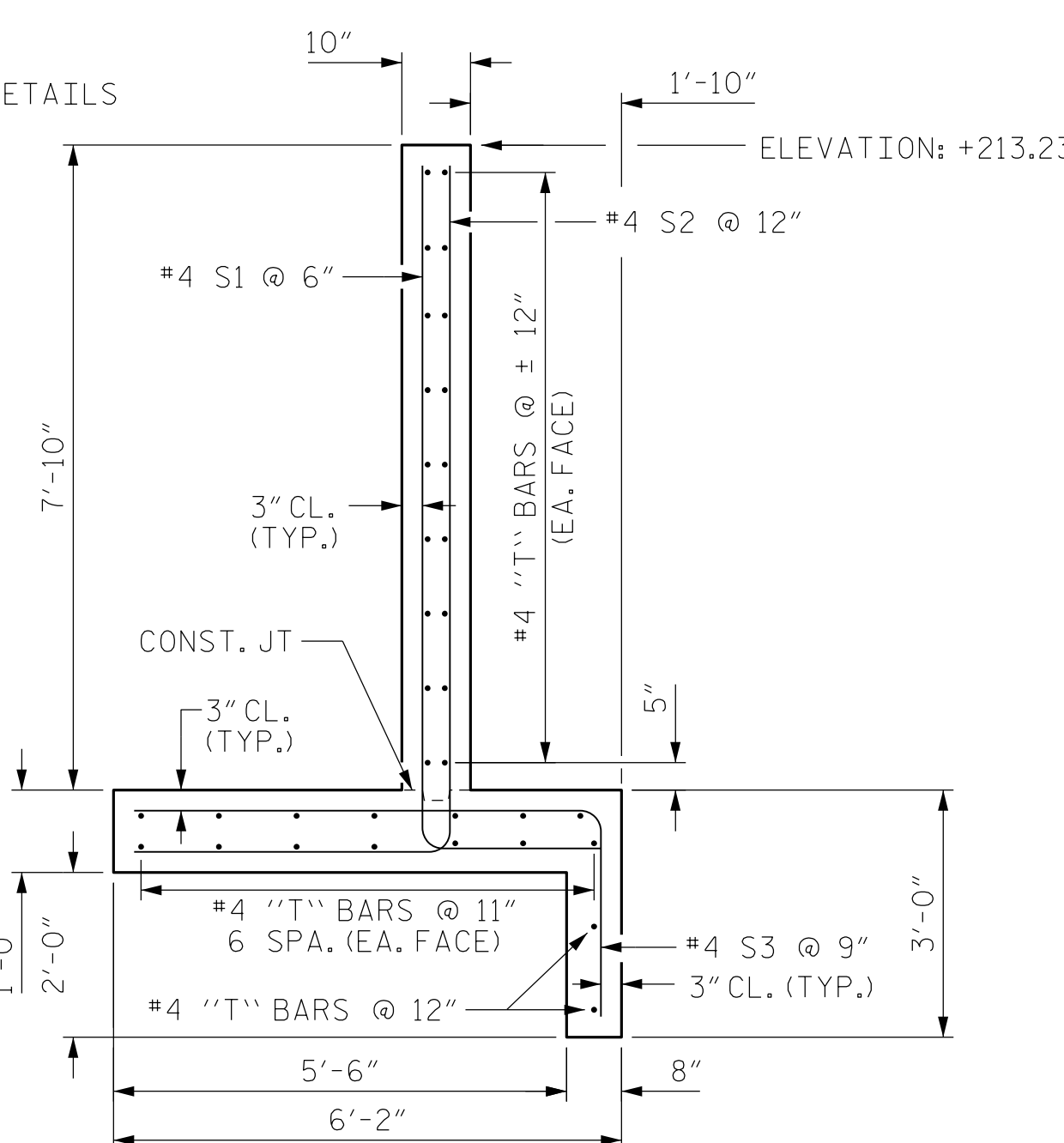
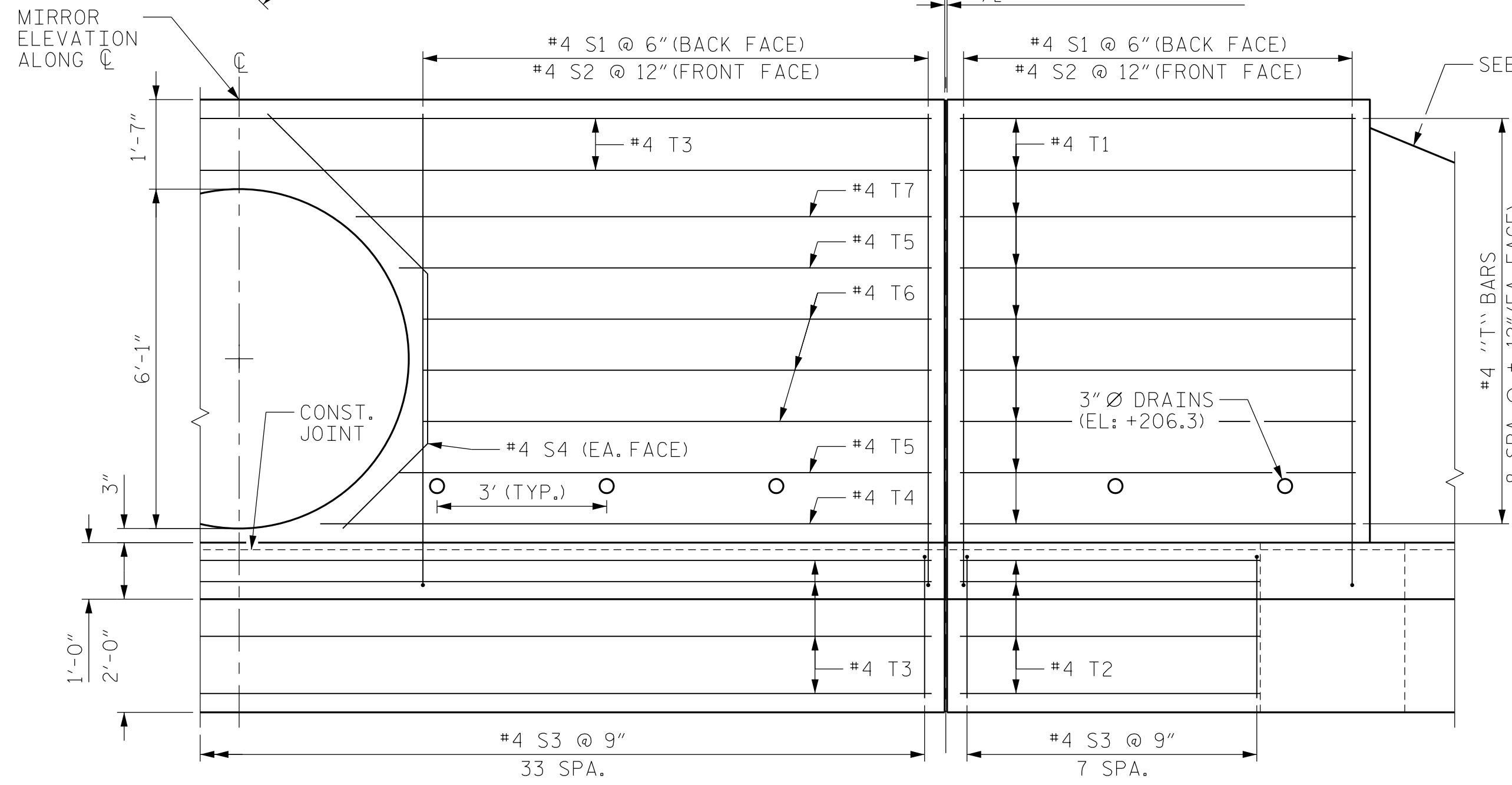


NOTES:

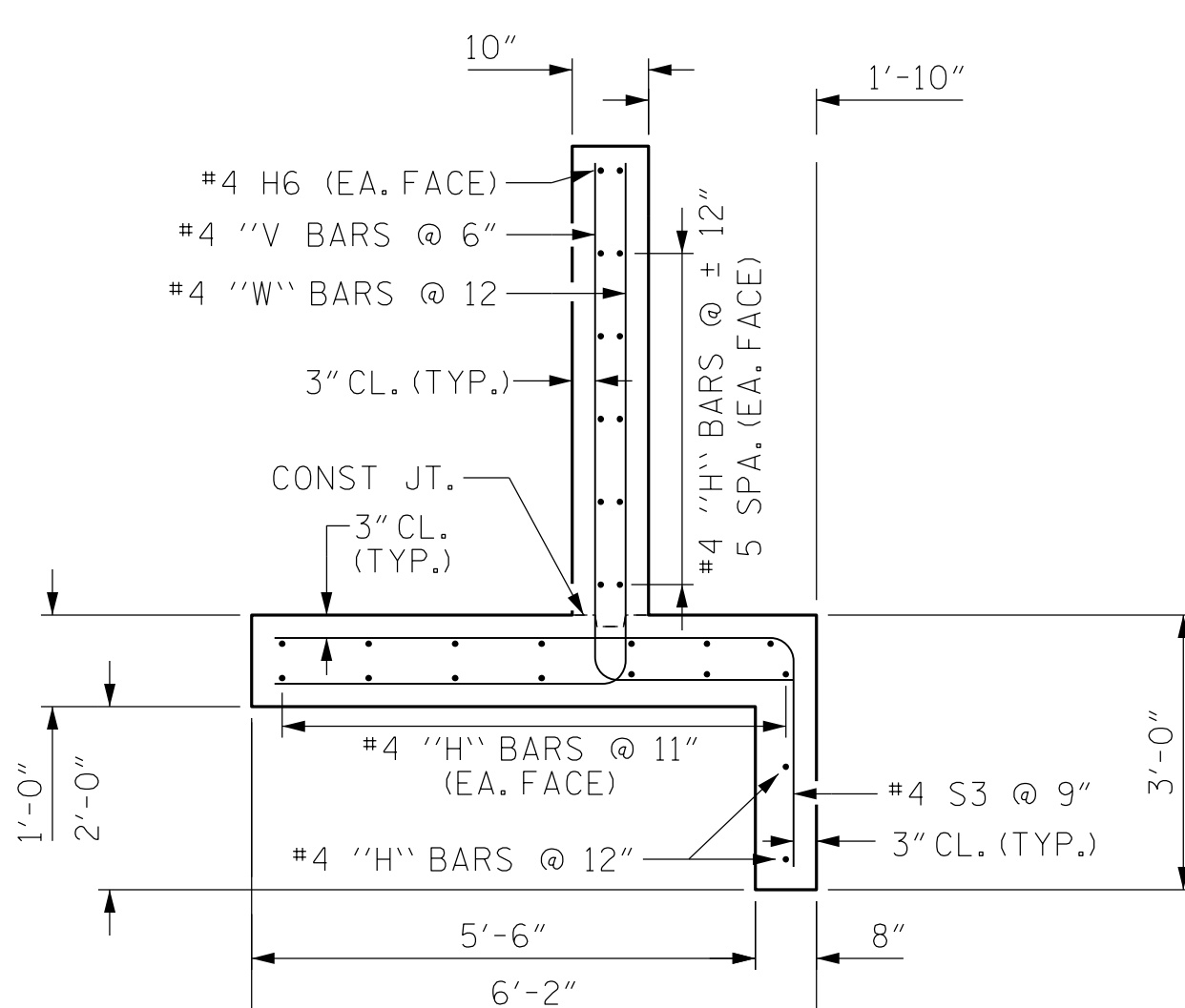
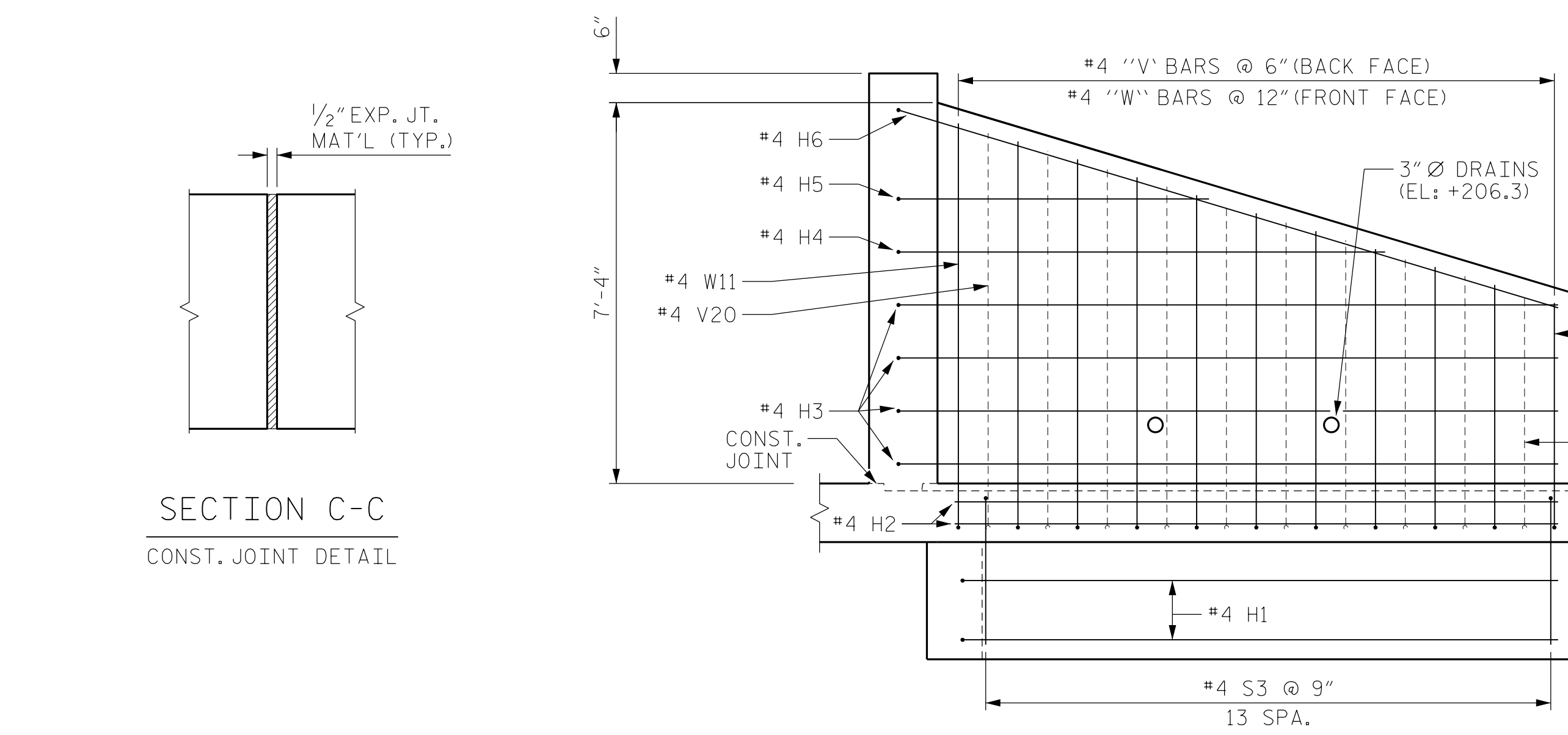
- USE CLASS "A" CONCRETE.
- CHAMFER ALL EXPOSED CORNERS 1".
- ALL DIMENSIONS RELATIVE TO PLACEMENT OF REINFORCING STEEL ARE TO CENTERS OF BARS.
- PLACE A STONE DRAIN CONSISTING OF ONE (1) CUBIC FOOT OF NUMBER 78M STONE CONTAINED IN A POROUS FABRIC AT EACH WEEP HOLE. PLACE SUBDRAIN FINE AGGREGATE BENEATH, AROUND AND OVER THE STONE DRAIN SO THE STONE DRAIN IS COMPLETELY COVERED BY A LAYER OF SUBDRAIN FINE AGGREGATE AT LEAST ONE (1) FOOT THICK. WHERE THERE IS MORE THAN A WEEP HOLE IN A WING WALL, PLACE A HORIZONTAL DRAIN OF SUBDRAIN FINE AGGREGATE AT LEAST ONE (1) FOOT SQUARE IN CROSS SECTION TO CONNECT ALL STONE DRAINS. PLACE A VERTICAL DRAIN OF SUBDRAIN FINE AGGREGATE AT LEAST ONE (1) FOOT SQUARE IN CROSS SECTION AT EACH WEEP HOLE TO AN ELEVATION OF TWO (2) FEET BELOW THE SURFACE OF THE EMBANKMENT.



ELEVATION

SECTION A-A

ENDWALL-WINGWALL DETAILS AT INTERSECTION
PLAN VIEW



ELEVATION

SECTION B-B

WINGWALL DETAILS

SECTION C-C
CONST. JOINT DETAIL



PROJECT NO. U-4405A
CUMBERLAND COUNTY
STATION: -L- 46+64 RT

SHEET 2 OF 3

STATE OF NORTH CAROLINA
DEPARTMENT OF TRANSPORTATION
RALEIGH
STRUCTURE #0637
REINFORCED CONCRETE
END WALL
LAYOUT AND DETAILS

DRAWN BY : DIEGO A. AGUIRRE DATE : 2/22/2019
CHECKED BY : JACOB H. DUKE DATE : 2/22/2019
DESIGN ENGINEER OF RECORD: SAMUEL L. CULLUM DATE : 2/22/2019

DOCUMENT NOT CONSIDERED
FINAL UNLESS ALL
SIGNATURES COMPLETED

301 FAYETTEVILLE ST., SUITE 1500
RALEIGH, NC 27601 (919) 882-7839
NC FIRM LICENSE: C-1506

REVISIONS						SHEET NO.	
NO.	BY:	DATE:	NO.	BY:	DATE:	C2-2	
1			3			TOTAL SHEETS	
2			4			3	