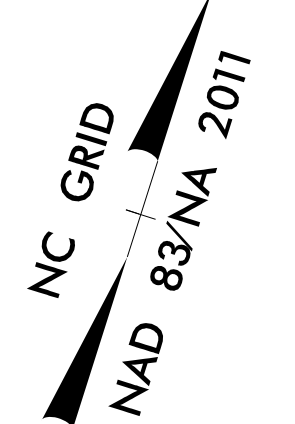


DOCUMENT NOT CONSIDERED FINAL  
UNTIL ALL SIGNATURES ARE COMPLETED

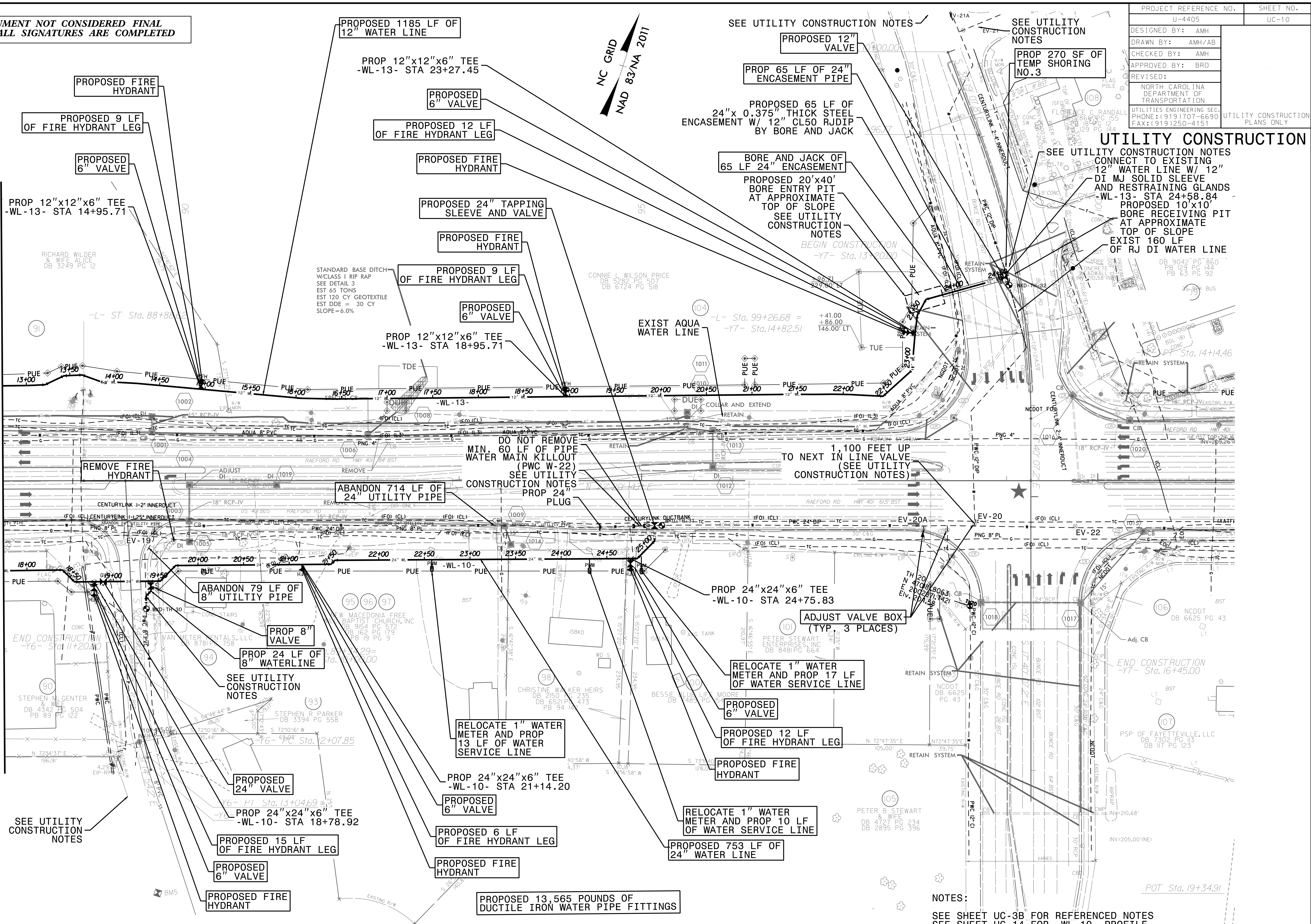
PROJECT REFERENCE NO.	U-4405	SHEET NO.	UC-10
DESIGNED BY:	AMH		
DRAWN BY:	AMH/AB		
CHECKED BY:	AMH		
APPROVED BY:	BRO		
REVISED:			
NORTH CAROLINA DEPARTMENT OF TRANSPORTATION		UTILITY CONSTRUCTION PLANS ONLY	
UTILITIES ENGINEERING SEC. PHONE: (919) 707-6690 FAX: (919) 250-4151			

### UTILITY CONSTRUCTION

SEE UTILITY CONSTRUCTION NOTES  
CONNECT TO EXISTING  
12" WATER LINE W/ 12"  
DI MJ SOLID SLEEVE  
AND RESTRAINING GLANDS  
-WL-13- STA 24+58.84  
PROPOSED 10'x10'  
BORE RECEIVING PIT  
AT APPROXIMATE  
TOP OF SLOPE  
EXIST 160 LF  
OF RJ DI WATER LINE



MATCHLINE SEE SHEET UC-9  
-L- STA 88+00



NOTES:  
SEE SHEET UC-3B FOR REFERENCED NOTES  
SEE SHEET UC-14 FOR -WL-10- PROFILE  
SEE SHEET UC-15 AND UC-16 FOR -WL-13- PROFILE

05-OCT-2021(7:51)  
 C:\Projects\Environmental\Fayetteville Public Works Commission\2015017700RA Raeford Road NCDOT U 4405\CADD\NCDOT PLANS\Utilities\Engineering\UC-Proj\U4405A\_ut\_r.dwg(10\_psh.dgn)  
 5/14/2021