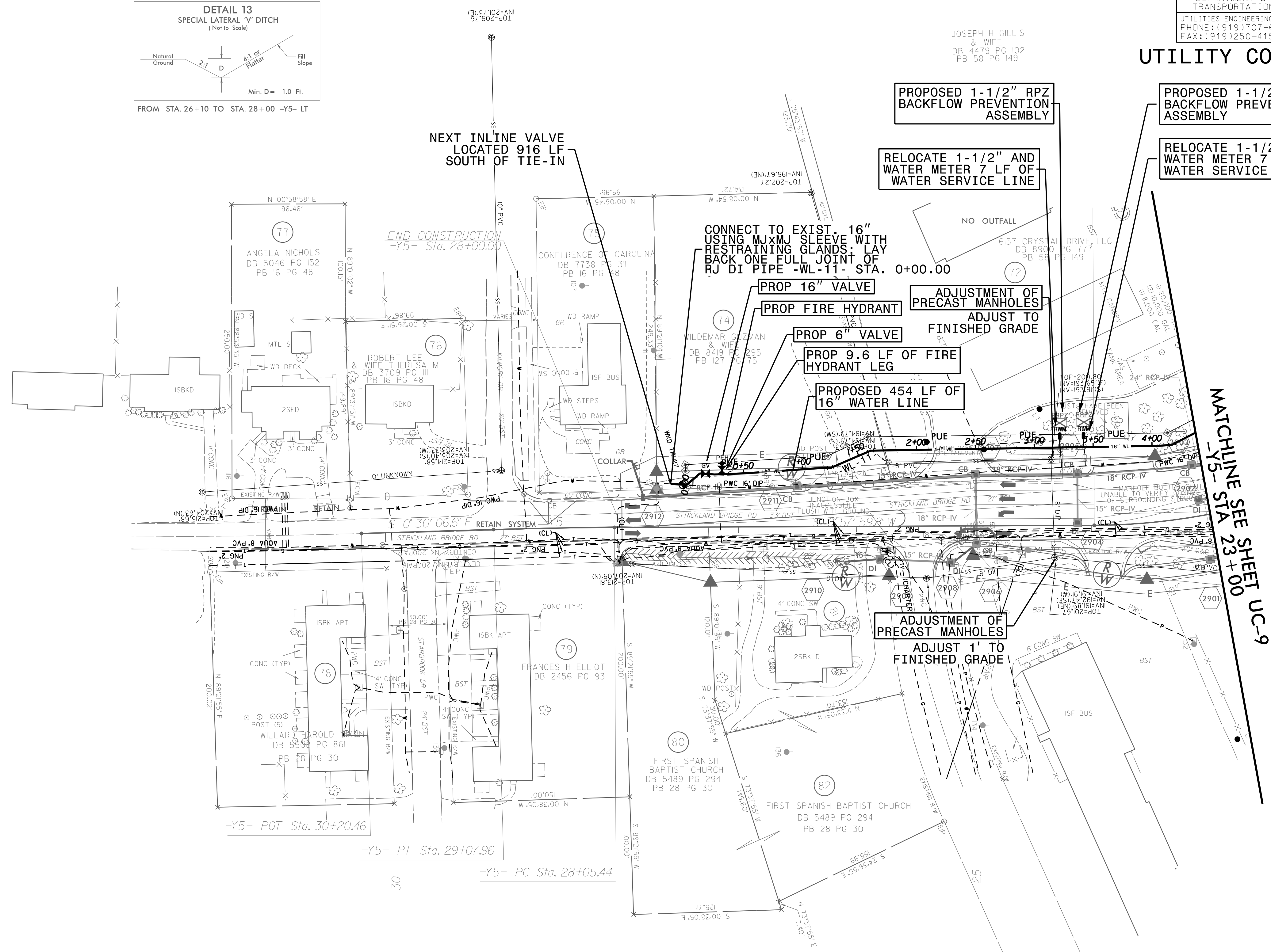
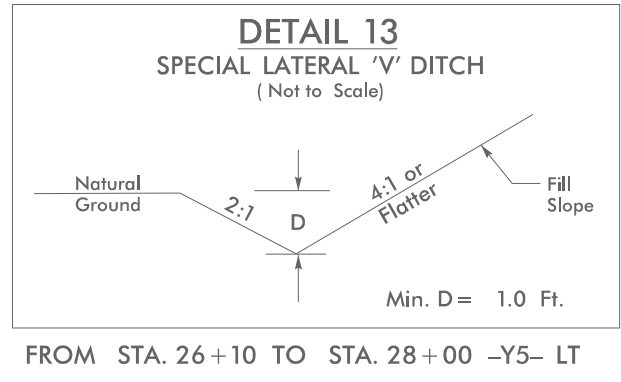


PROJECT REFERENCE NO.	SHEET NO.
U-4405	UC-98
DESIGNED BY: AMH	UTILITY CONSTRUCTION PLANS ONLY
DRAWN BY: AMH/AB	
CHECKED BY: AMH	
APPROVED BY: BRO	
REVISED:	
NORTH CAROLINA DEPARTMENT OF TRANSPORTATION	
UTILITIES ENGINEERING SEC. PHONE: (919) 707-6690 FAX: (919) 250-4151	

DOCUMENT NOT CONSIDERED FINAL  
UNTIL ALL SIGNATURES ARE COMPLETED

NC GRID  
NAD 83/NA 2011

JOSEPH H. GILLIS  
& WIFE  
DB 4479 PG 102  
PB 58 PG 149



PROPOSED 2,490 POUNDS OF  
DUCTILE IRON WATER PIPE FITTINGS

-Y5-	
PI Sta 28+56.71	PI Sta 22+82.12
$\Delta = 1^{\circ} 28' 06.4\"$ (LT)	$\Delta = 25^{\circ} 18' 13.3\"$ (RT)
$D = 1^{\circ} 25' 56.6\"$	$D = 10^{\circ} 44' 58.8\"$
$L = 102.52'$	$L = 235.39'$
$T = 51.26'$	$T = 119.65'$
$R = 4,000.00'$	$R = 533.00'$
	$SE = 0.02$

MATCHLINE SEE SHEET UC-9  
-Y5- STA 23+00

NOTE:  
SEE SHEET UC-3A FOR CONSTRUCTION NOTES  
SEE SHEET UC-3B FOR -WL-11 PROFILE

05-OCT-2021(7:51)  
Z:\Projects\Environmental\Fayetteville Public Works Commission\2015017700RA Roeferd Road NCDOT U 4405\CADD\NCDOT PLANS\Utilities\Engineering\UC\Proc\U4405A\_ut\_r.dwg(29\_uc9B\_psh.dgn  
5/14/99