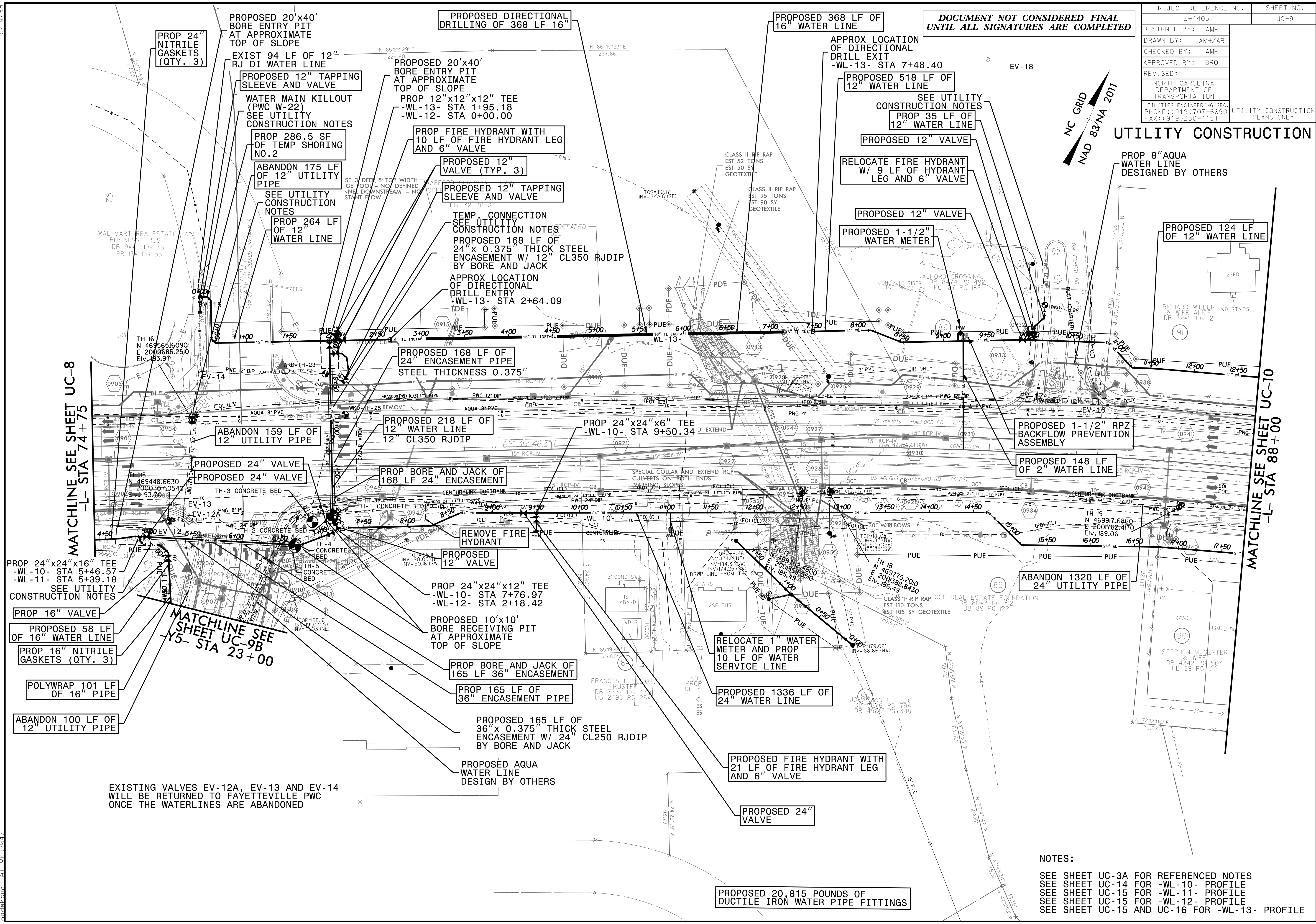
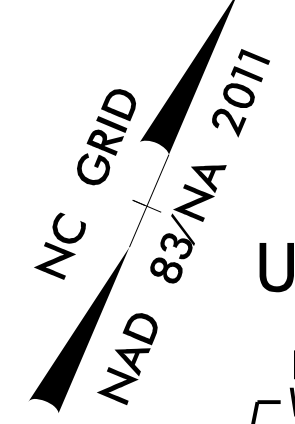


PROJECT REFERENCE NO.	SHEET NO.
U-4405	UC-9
DESIGNED BY: AMH	
DRAWN BY: AMH/AB	
CHECKED BY: AMH	
APPROVED BY: BRO	
REVISED:	
NORTH CAROLINA DEPARTMENT OF TRANSPORTATION	
UTILITIES ENGINEERING SEC. PHONE: (919) 707-6690 FAX: (919) 250-4151	UTILITY CONSTRUCTION PLANS ONLY

DOCUMENT NOT CONSIDERED FINAL UNTIL ALL SIGNATURES ARE COMPLETED

UTILITY CONSTRUCTION



MATCHLINE SEE SHEET UC-8 -L- STA 74+75

MATCHLINE SEE SHEET UC-10 -L- STA 88+00

MATCHLINE SEE SHEET UC-9B -Y5- STA 23+00

EXISTING VALVES EV-12A, EV-13 AND EV-14 WILL BE RETURNED TO FAYETTEVILLE PWC ONCE THE WATERLINES ARE ABANDONED

- NOTES:**
- SEE SHEET UC-3A FOR REFERENCED NOTES
 - SEE SHEET UC-14 FOR -WL-10- PROFILE
 - SEE SHEET UC-15 FOR -WL-11- PROFILE
 - SEE SHEET UC-15 FOR -WL-12- PROFILE
 - SEE SHEET UC-15 AND UC-16 FOR -WL-13- PROFILE

5/14/09
05-OCT-2009 17:51
C:\Projects\Environmental\Fayetteville Public Works Commission\2015017700RA RaeFord Road NCDOT U 4405\CADD\NCDOT PLANS\Utilities\Engineering\UC-Proj\U4405A_ut_rdy9_uc09_psh.dgn
WAL-MART REALESTATE BUSINESS TRUST DB 9449 PG 76 PB 134 PG 55
TH 16 N 469565.6090 E 2000685.2510 Eiv. 193.97
TH 15 N 469448.6630 E 2000707.0540 Eiv. 193.00
TH 14 N 469448.6630 E 2000707.0540 Eiv. 193.00
TH 13 N 469448.6630 E 2000707.0540 Eiv. 193.00
TH 12 N 469448.6630 E 2000707.0540 Eiv. 193.00
TH 11 N 469448.6630 E 2000707.0540 Eiv. 193.00
TH 10 N 469448.6630 E 2000707.0540 Eiv. 193.00
TH 9 N 469448.6630 E 2000707.0540 Eiv. 193.00
TH 8 N 469448.6630 E 2000707.0540 Eiv. 193.00
TH 7 N 469448.6630 E 2000707.0540 Eiv. 193.00
TH 6 N 469448.6630 E 2000707.0540 Eiv. 193.00
TH 5 N 469448.6630 E 2000707.0540 Eiv. 193.00
TH 4 N 469448.6630 E 2000707.0540 Eiv. 193.00
TH 3 N 469448.6630 E 2000707.0540 Eiv. 193.00
TH 2 N 469448.6630 E 2000707.0540 Eiv. 193.00
TH 1 N 469448.6630 E 2000707.0540 Eiv. 193.00
TH 18 N 469775.2010 E 200388.8430 Eiv. 186.49
TH 17 N 469775.2010 E 200388.8430 Eiv. 186.49
TH 16 N 469775.2010 E 200388.8430 Eiv. 186.49
TH 15 N 469775.2010 E 200388.8430 Eiv. 186.49
TH 14 N 469775.2010 E 200388.8430 Eiv. 186.49
TH 13 N 469775.2010 E 200388.8430 Eiv. 186.49
TH 12 N 469775.2010 E 200388.8430 Eiv. 186.49
TH 11 N 469775.2010 E 200388.8430 Eiv. 186.49
TH 10 N 469775.2010 E 200388.8430 Eiv. 186.49
TH 9 N 469775.2010 E 200388.8430 Eiv. 186.49
TH 8 N 469775.2010 E 200388.8430 Eiv. 186.49
TH 7 N 469775.2010 E 200388.8430 Eiv. 186.49
TH 6 N 469775.2010 E 200388.8430 Eiv. 186.49
TH 5 N 469775.2010 E 200388.8430 Eiv. 186.49
TH 4 N 469775.2010 E 200388.8430 Eiv. 186.49
TH 3 N 469775.2010 E 200388.8430 Eiv. 186.49
TH 2 N 469775.2010 E 200388.8430 Eiv. 186.49
TH 1 N 469775.2010 E 200388.8430 Eiv. 186.49
TH 19 N 469917.6860 E 2001762.4170 Eiv. 189.06
TH 18 N 469917.6860 E 2001762.4170 Eiv. 189.06
TH 17 N 469917.6860 E 2001762.4170 Eiv. 189.06
TH 16 N 469917.6860 E 2001762.4170 Eiv. 189.06
TH 15 N 469917.6860 E 2001762.4170 Eiv. 189.06
TH 14 N 469917.6860 E 2001762.4170 Eiv. 189.06
TH 13 N 469917.6860 E 2001762.4170 Eiv. 189.06
TH 12 N 469917.6860 E 2001762.4170 Eiv. 189.06
TH 11 N 469917.6860 E 2001762.4170 Eiv. 189.06
TH 10 N 469917.6860 E 2001762.4170 Eiv. 189.06
TH 9 N 469917.6860 E 2001762.4170 Eiv. 189.06
TH 8 N 469917.6860 E 2001762.4170 Eiv. 189.06
TH 7 N 469917.6860 E 2001762.4170 Eiv. 189.06
TH 6 N 469917.6860 E 2001762.4170 Eiv. 189.06
TH 5 N 469917.6860 E 2001762.4170 Eiv. 189.06
TH 4 N 469917.6860 E 2001762.4170 Eiv. 189.06
TH 3 N 469917.6860 E 2001762.4170 Eiv. 189.06
TH 2 N 469917.6860 E 2001762.4170 Eiv. 189.06
TH 1 N 469917.6860 E 2001762.4170 Eiv. 189.06
TH 18 N 469775.2010 E 200388.8430 Eiv. 186.49
TH 17 N 469775.2010 E 200388.8430 Eiv. 186.49
TH 16 N 469775.2010 E 200388.8430 Eiv. 186.49
TH 15 N 469775.2010 E 200388.8430 Eiv. 186.49
TH 14 N 469775.2010 E 200388.8430 Eiv. 186.49
TH 13 N 469775.2010 E 200388.8430 Eiv. 186.49
TH 12 N 469775.2010 E 200388.8430 Eiv. 186.49
TH 11 N 469775.2010 E 200388.8430 Eiv. 186.49
TH 10 N 469775.2010 E 200388.8430 Eiv. 186.49
TH 9 N 469775.2010 E 200388.8430 Eiv. 186.49
TH 8 N 469775.2010 E 200388.8430 Eiv. 186.49
TH 7 N 469775.2010 E 200388.8430 Eiv. 186.49
TH 6 N 469775.2010 E 200388.8430 Eiv. 186.49
TH 5 N 469775.2010 E 200388.8430 Eiv. 186.49
TH 4 N 469775.2010 E 200388.8430 Eiv. 186.49
TH 3 N 469775.2010 E 200388.8430 Eiv. 186.49
TH 2 N 469775.2010 E 200388.8430 Eiv. 186.49
TH 1 N 469775.2010 E 200388.8430 Eiv. 186.49
TH 19 N 469917.6860 E 2001762.4170 Eiv. 189.06
TH 18 N 469917.6860 E 2001762.4170 Eiv. 189.06
TH 17 N 469917.6860 E 2001762.4170 Eiv. 189.06
TH 16 N 469917.6860 E 2001762.4170 Eiv. 189.06
TH 15 N 469917.6860 E 2001762.4170 Eiv. 189.06
TH 14 N 469917.6860 E 2001762.4170 Eiv. 189.06
TH 13 N 469917.6860 E 2001762.4170 Eiv. 189.06
TH 12 N 469917.6860 E 2001762.4170 Eiv. 189.06
TH 11 N 469917.6860 E 2001762.4170 Eiv. 189.06
TH 10 N 469917.6860 E 2001762.4170 Eiv. 189.06
TH 9 N 469917.6860 E 2001762.4170 Eiv. 189.06
TH 8 N 469917.6860 E 2001762.4170 Eiv. 189.06
TH 7 N 469917.6860 E 2001762.4170 Eiv. 189.06
TH 6 N 469917.6860 E 2001762.4170 Eiv. 189.06
TH 5 N 469917.6860 E 2001762.4170 Eiv. 189.06
TH 4 N 469917.6860 E 2001762.4170 Eiv. 189.06
TH 3 N 469917.6860 E 2001762.4170 Eiv. 189.06
TH 2 N 469917.6860 E 2001762.4170 Eiv. 189.06
TH 1 N 469917.6860 E 2001762.4170 Eiv. 189.06
TH 18 N 469775.2010 E 200388.8430 Eiv. 186.49
TH 17 N 469775.2010 E 200388.8430 Eiv. 186.49
TH 16 N 469775.2010 E 200388.8430 Eiv. 186.49
TH 15 N 469775.2010 E 200388.8430 Eiv. 186.49
TH 14 N 469775.2010 E 200388.8430 Eiv. 186.49
TH 13 N 469775.2010 E 200388.8430 Eiv. 186.49
TH 12 N 469775.2010 E 200388.8430 Eiv. 186.49
TH 11 N 469775.2010 E 200388.8430 Eiv. 186.49
TH 10 N 469775.2010 E 200388.8430 Eiv. 186.49
TH 9 N 469775.2010 E 200388.8430 Eiv. 186.49
TH 8 N 469775.2010 E 200388.8430 Eiv. 186.49
TH 7 N 469775.2010 E 200388.8430 Eiv. 186.49
TH 6 N 469775.2010 E 200388.8430 Eiv. 186.49
TH 5 N 469775.2010 E 200388.8430 Eiv. 186.49
TH 4 N 469775.2010 E 200388.8430 Eiv. 186.49
TH 3 N 469775.2010 E 200388.8430 Eiv. 186.49
TH 2 N 469775.2010 E 200388.8430 Eiv. 186.49
TH 1 N 469775.2010 E 200388.8430 Eiv. 186.49
TH 19 N 469917.6860 E 2001762.4170 Eiv. 189.06
TH 18 N 469917.6860 E 2001762.4170 Eiv. 189.06
TH 17 N 469917.6860 E 2001762.4170 Eiv. 189.06
TH 16 N 469917.6860 E 2001762.4170 Eiv. 189.06
TH 15 N 469917.6860 E 2001762.4170 Eiv. 189.06
TH 14 N 469917.6860 E 2001762.4170 Eiv. 189.06
TH 13 N 469917.6860 E 2001762.4170 Eiv. 189.06
TH 12 N 469917.6860 E 2001762.4170 Eiv. 189.06
TH 11 N 469917.6860 E 2001762.4170 Eiv. 189.06
TH 10 N 469917.6860 E 2001762.4170 Eiv. 189.06
TH 9 N 469917.6860 E 2001762.4170 Eiv. 189.06
TH 8 N 469917.6860 E 2001762.4170 Eiv. 189.06
TH 7 N 469917.6860 E 2001762.4170 Eiv. 189.06
TH 6 N 469917.6860 E 2001762.4170 Eiv. 189.06
TH 5 N 469917.6860 E 2001762.4170 Eiv. 189.06
TH 4 N 469917.6860 E 2001762.4170 Eiv. 189.06
TH 3 N 469917.6860 E 2001762.4170 Eiv. 189.06
TH 2 N 469917.6860 E 2001762.4170 Eiv. 189.06
TH 1 N 469917.6860 E 2001762.4170 Eiv. 189.06
TH 18 N 469775.2010 E 200388.8430 Eiv. 186.49
TH 17 N 469775.2010 E 200388.8430 Eiv. 186.49
TH 16 N 469775.2010 E 200388.8430 Eiv. 186.49
TH 15 N 469775.2010 E 200388.8430 Eiv. 186.49
TH 14 N 469775.2010 E 200388.8430 Eiv. 186.49
TH 13 N 469775.2010 E 200388.8430 Eiv. 186.49
TH 12 N 469775.2010 E 200388.8430 Eiv. 186.49
TH 11 N 469775.2010 E 200388.8430 Eiv. 186.49
TH 10 N 469775.2010 E 200388.8430 Eiv. 186.49
TH 9 N 469775.2010 E 200388.8430 Eiv. 186.49
TH 8 N 469775.2010 E 200388.8430 Eiv. 186.49
TH 7 N 469775.2010 E 200388.8430 Eiv. 186.49
TH 6 N 469775.2010 E 200388.8430 Eiv. 186.49
TH 5 N 469775.2010 E 200388.8430 Eiv. 186.49
TH 4 N 469775.2010 E 200388.8430 Eiv. 186.49
TH 3 N 469775.2010 E 200388.8430 Eiv. 186.49
TH 2 N 469775.2010 E 200388.8430 Eiv. 186.49
TH 1 N 469775.2010 E 200388.8430 Eiv. 186.49
TH 19 N 469917.6860 E 2001762.4170 Eiv. 189.06
TH 18 N 469917.6860 E 2001762.4170 Eiv. 189.06
TH 17 N 469917.6860 E 2001762.4170 Eiv. 189.06
TH 16 N 469917.6860 E 2001762.4170 Eiv. 189.06
TH 15 N 469917.6860 E 2001762.4170 Eiv. 189.06
TH 14 N 469917.6860 E 2001762.4170 Eiv. 189.06
TH 13 N 469917.6860 E 2001762.4170 Eiv. 189.06
TH 12 N 469917.6860 E 2001762.4170 Eiv. 189.06
TH 11 N 469917.6860 E 2001762.4170 Eiv. 189.06
TH 10 N 469917.6860 E 2001762.4170 Eiv. 189.06
TH 9 N 469917.6860 E 2001762.4170 Eiv. 189.06
TH 8 N 469917.6860 E 2001762.4170 Eiv. 189.06
TH 7 N 469917.6860 E 2001762.4170 Eiv. 189.06
TH 6 N 469917.6860 E 2001762.4170 Eiv. 189.06
TH 5 N 469917.6860 E 2001762.4170 Eiv. 189.06
TH 4 N 469917.6860 E 2001762.4170 Eiv. 189.06
TH 3 N 469917.6860 E 2001762.4170 Eiv. 189.06
TH 2 N 469917.6860 E 2001762.4170 Eiv. 189.06
TH 1 N 469917.6860 E 2001762.4170 Eiv. 189.06
TH 18 N 469775.2010 E 200388.8430 Eiv. 186.49
TH 17 N 469775.2010 E 200388.8430 Eiv. 186.49
TH 16 N 469775.2010 E 200388.8430 Eiv. 186.49
TH 15 N 469775.2010 E 200388.8430 Eiv. 186.49
TH 14 N 469775.2010 E 200388.8430 Eiv. 186.49
TH 13 N 469775.2010 E 200388.8430 Eiv. 186.49
TH 12 N 469775.2010 E 200388.8430 Eiv. 186.49
TH 11 N 469775.2010 E 200388.8430 Eiv. 186.49
TH 10 N 469775.2010 E 200388.8430 Eiv. 186.49
TH 9 N 469775.2010 E 200388.8430 Eiv. 186.49
TH 8 N 469775.2010 E 200388.8430 Eiv. 186.49
TH 7 N 469775.2010 E 200388.8430 Eiv. 186.49
TH 6 N 469775.2010 E 200388.8430 Eiv. 186.49
TH 5 N 469775.2010 E 200388.8430 Eiv. 186.49
TH 4 N 469775.2010 E 200388.8430 Eiv. 186.49
TH 3 N 469775.2010 E 200388.8430 Eiv. 186.49
TH 2 N 469775.2010 E 200388.8430 Eiv. 186.49
TH 1 N 469775.2010 E 200388.8430 Eiv. 186.49
TH 19 N 469917.6860 E 2001762.4170 Eiv. 189.06
TH 18 N 469917.6860 E 2001762.4170 Eiv. 189.06
TH 17 N 469917.6860 E 2001762.4170 Eiv. 189.06
TH 16 N 469917.6860 E 2001762.4170 Eiv. 189.06
TH 15 N 469917.6860 E 2001762.4170 Eiv. 189.06
TH 14 N 469917.6860 E 2001762.4170 Eiv. 189.06
TH 13 N 469917.6860 E 2001762.4170 Eiv. 189.06
TH 12 N 469917.6860 E 2001762.4170 Eiv. 189.06
TH 11 N 469917.6860 E 2001762.4170 Eiv. 189.06
TH 10 N 469917.6860 E 2001762.4170 Eiv. 189.06
TH 9 N 469917.6860 E 2001762.4170 Eiv. 189.06
TH 8 N 469917.6860 E 2001762.4170 Eiv. 189.06
TH 7 N 469917.6860 E 2001762.4170 Eiv. 189.06
TH 6 N 469917.6860 E 2001762.4170 Eiv. 189.06
TH 5 N 469917.6860 E 2001762.4170 Eiv. 189.06
TH 4 N 469917.6860 E 2001762.4170 Eiv. 189.06
TH 3 N 469917.6860 E 2001762.4170 Eiv. 189.06
TH 2 N 469917.6860 E 2001762.4170 Eiv. 189.06
TH 1 N 469917.6860 E 2001762.4170 Eiv. 189.06
TH 18 N 469775.2010 E 200388.8430 Eiv. 186.49
TH 17 N 469775.2010 E 200388.8430 Eiv. 186.49
TH 16 N 469775.2010 E 200388.8430 Eiv. 186.49
TH 15 N 469775.2010 E 200388.8430 Eiv. 186.49
TH 14 N 469775.2010 E 200388.8430 Eiv. 186.49
TH 13 N 469775.2010 E 200388.8430 Eiv. 186.49
TH 12 N 469775.2010 E 200388.8430 Eiv. 186.49
TH 11 N 469775.2010 E 200388.8430 Eiv. 186.49
TH 10 N 469775.2010 E 200388.8430 Eiv. 186.49
TH 9 N 469775.2010 E 200388.8430 Eiv. 186.49
TH 8 N 469775.2010 E 200388.8430 Eiv. 186.49
TH 7 N 469775.2010 E 200388.8430 Eiv. 186.49
TH 6 N 469775.2010 E 200388.8430 Eiv. 186.49
TH 5 N 469775.2010 E 200388.8430 Eiv. 186.49
TH 4 N 469775.2010 E 200388.8430 Eiv. 186.49
TH 3 N 469775.2010 E 200388.8430 Eiv. 186.49
TH 2 N 469775.2010 E 200388.8430 Eiv. 186.49
TH 1 N 469775.2010 E 200388.8430 Eiv. 186.49
TH 19 N 469917.6860 E 2001762.4170 Eiv. 189.06
TH 18 N 469917.6860 E 2001762.4170 Eiv. 189.06
TH 17 N 469917.6860 E 2001762.4170 Eiv. 189.06
TH 16 N 469917.6860 E 2001762.4170 Eiv. 189.06
TH 15 N 469917.6860 E 2001762.4170 Eiv. 189.06
TH 14 N 469917.6860 E 2001762.4170 Eiv. 189.06
TH 13 N 469917.6860 E 2001762.4170 Eiv. 189.06
TH 12 N 469917.6860 E 2001762.4170 Eiv. 189.06
TH 11 N 469917.6860 E 2001762.4170 Eiv. 189.06
TH 10 N 469917.6860 E 2001762.4170 Eiv. 189.06
TH 9 N 469917.6860 E 2001762.4170 Eiv. 189.06
TH 8 N 469917.6860 E 2001762.4170 Eiv. 189.06
TH 7 N 469917.6860 E 2001762.4170 Eiv. 189.06
TH 6 N 469917.6860 E 2001762.4170 Eiv. 189.06
TH 5 N 469917.6860 E 2001762.4170 Eiv. 189.06
TH 4 N 469917.6860 E 2001762.4170 Eiv. 189.06
TH 3 N 469917.6860 E 2001762.4170 Eiv. 189.06
TH 2 N 469917.6860 E 2001762.4170 Eiv. 189.06
TH 1 N 469917.6860 E 2001762.4170 Eiv. 189.06
TH 18 N 469775.2010 E 200388.8430 Eiv. 186.49
TH 17 N 469775.2010 E 200388.8430 Eiv. 186.49
TH 16 N 469775.2010 E 200388.8430 Eiv. 186.49
TH 15 N 469775.2010 E 200388.8430 Eiv. 186.49
TH 14 N 469775.2010 E 200388.8430 Eiv. 186.49
TH 13 N 469775.2010 E 200388.8430 Eiv. 186.49
TH 12 N 469775.2010 E 200388.8430 Eiv. 186.49
TH 11 N 469775.2010 E 200388.8430 Eiv. 186.49
TH 10 N 469775.2010 E 200388.8430 Eiv. 186.49
TH 9 N 469775.2010 E 200388.8430 Eiv. 186.49
TH 8 N 469775.2010 E 200388.8430 Eiv. 186.49
TH 7 N 469775.2010 E 200388.8430 Eiv. 186.49
TH 6 N 469775.2010 E 200388.8430 Eiv. 186.49
TH 5 N 469775.2010 E 200388.8430 Eiv. 186.49
TH 4 N 469775.2010 E 200388.8430 Eiv. 186.49
TH 3 N 469775.2010 E 200388.8430 Eiv. 186.49
TH 2 N 469775.2010 E 200388.8430 Eiv. 186.49
TH 1 N 469775.2010 E 200388.8430 Eiv. 186.49
TH 19 N 469917.6860 E 2001762.4170 Eiv. 189.06
TH 18 N 469917.6860 E