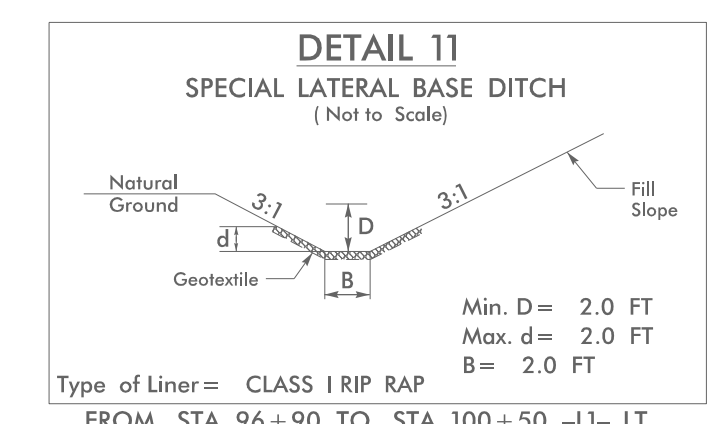
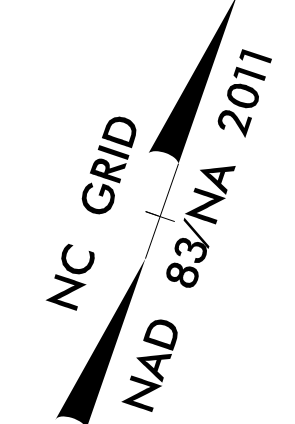


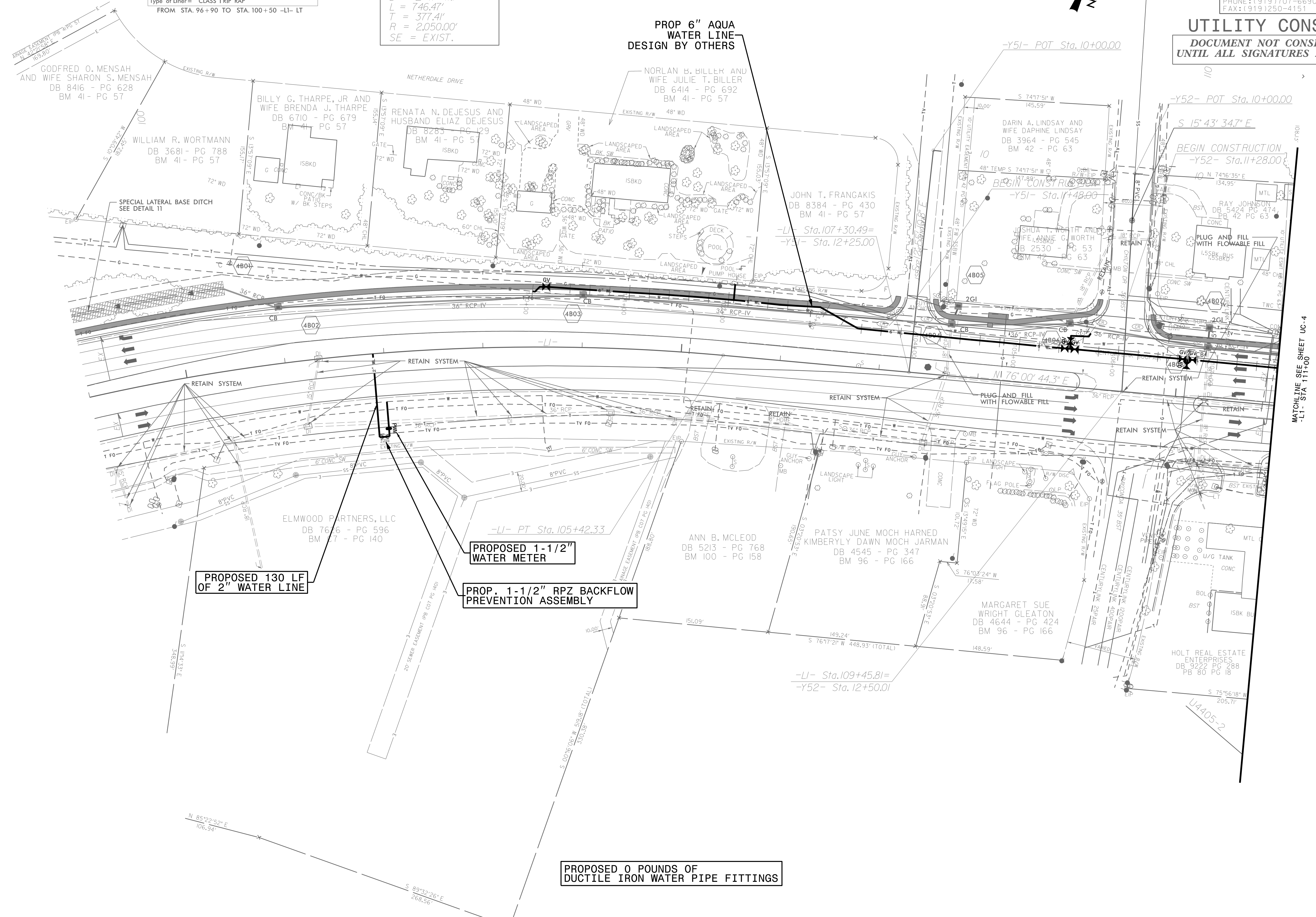
PROJECT REFERENCE NO.	SHEET NO.
U-4405	UC-4B
DESIGNED BY: AMH	UTILITY CONSTRUCTION PLANS ONLY
DRAWN BY: AMH/AB	
CHECKED BY: AMH	
APPROVED BY: BRO	
REVISED:	
NORTH CAROLINA DEPARTMENT OF TRANSPORTATION	
UTILITIES ENGINEERING SEC. PHONE: (919) 707-6690 FAX: (919) 250-4151	

UTILITY CONSTRUCTION
DOCUMENT NOT CONSIDERED FINAL
UNTIL ALL SIGNATURES ARE COMPLETED



-LI-
PI Sta 101+73.28
 $\Delta = 20^{\circ} 51' 47.4''$ (RT)
D = 2' 47' 41.7"
L = 746.47'
T = 377.41'
R = 2,050.00'
SE = EXIST.

PROP 6" AQUA
WATER LINE
DESIGN BY OTHERS



PROPOSED 130 LF
OF 2" WATER LINE

PROPOSED 1-1/2"
WATER METER

PROP. 1-1/2" RPZ BACKFLOW
PREVENTION ASSEMBLY

PROPOSED 0 POUNDS OF
DUCTILE IRON WATER PIPE FITTINGS

MATCHLINE SEE SHEET UC-4
-LI- STA 111+00

3:\AUC-2021\12-02
2:\Projects\Environmental\Fayetteville Public Works Commission\2015017700RA Røeford Road NCDOT U 4405\CADD\NCDOT PLANS\Utilities\Engineering\UC-Proj\U4405A_ut_r.dwg uc04B_psh.dgn
5/14/99