

DESIGNED BY: AMH
 DRAWN BY: AMH/AB
 CHECKED BY: AMH
 APPROVED BY: BRO
 REVISED:
 NORTH CAROLINA
 DEPARTMENT OF
 TRANSPORTATION
 UTILITIES ENGINEERING SEC.
 PHONE: (919) 707-6690
 FAX: (919) 250-4151

UTILITY CONSTRUCTION
 PLANS ONLY

UTILITY CONSTRUCTION
DOCUMENT NOT CONSIDERED FINAL
UNTIL ALL SIGNATURES ARE COMPLETED

- CONTRACTOR SHALL REPAIR ALL WATER LATERALS AND MAINS DAMAGED DURING CONSTRUCTION. THE CONTRACTOR SHALL REPORT IMMEDIATELY ALL WATER MAIN AND LATERAL BREAKS TO THE FAYETTEVILLE PROJECT COORDINATOR. THE CONTRACTOR SHALL INITIATE IMMEDIATE REPAIRS IN ACCORDANCE WITH FAYPWC STANDARDS. CONTRACTOR SHALL NOT OPERATE FAYPWC WATER MAIN VALVES WITHOUT FAYPWC APPROVAL AND SHALL COORDINATE ALL VALVE CLOSINGS WITH FAYPWC.
- THE CONTRACTOR SHALL NOT USE HOUSE HOSE BIBBS OR ANY OTHER METHOD OF BLOW OFF WHICH ALLOWS DOMESTIC WATER CONTAINING SEDIMENTS OR HIGH LEVELS OF CHLORINE TO PASS THRU RESIDENT'S METERS. THE CONTRACTOR SHALL BE RESPONSIBLE FOR ALL DAMAGES RESULTING FROM ALLOWING "DIRTY" WATER TO ENTER RESIDENT'S PLUMBING SYSTEM, SUCH AS WATER HEATERS, STAINED CLOTHING, CLOGGED SCREENS, ETC.
- WATER MAINS AND LATERALS SHALL BE INSTALLED UTILIZING A FAYPWC APPROVED CUT-SHEET INDICATING INSTALLATION DEPTH.
- TRANSFER OF WATER SERVICES SHALL BE ACCOMPLISHED AS FOLLOWS:
 A. INSTALL, TEST AND STERILIZE NEW MAIN AND LATERALS. LATERALS SHALL BE INSTALLED 18" INSIDE RIGHT-OF-WAY UNLESS OTHERWISE DIRECTED BY FAYPWC.
 B. TRANSFER EXISTING METER TO NEW WATER LATERAL. LATERALS SHALL BE INSTALLED TO EXISTING DOMESTIC SERVICE UTILIZING BRASS FITTINGS. SAME METER NUMBER SHALL BE INSTALLED ON SAME ADDRESS AND/OR CUSTOMER. BLOW OFF SERVICE AT HOSE BIBB ON HOUSE ONLY AFTER METER HAS BEEN TRANSFERRED.
 C. AFTER ALL SERVICES ARE TRANSFERRED TO THE NEW SYSTEM, SHUT OFF VALVE ON EXISTING SYSTEM AND ABANDON EXISTING MAINS IN ACCORDANCE WITH FAYPWC DETAILS.
 D. CONTRACTOR SHALL SUPPLY NEW METER BOXES AND DISPOSE OF EXISTING METER BOXES.
- WHEN MAIN IS NOT TO BE ABANDONED, CONTRACTOR SHALL UNCOVER OLD CORPORATION AT MAIN, CLOSE AND PLUG CORPORATION TO ABANDON OLD SERVICE.
- CONTRACTOR SHALL ABANDON ("KILL-OUT") ANY EXISTING WATER SERVICES THAT WILL NOT BE UTILIZED BY CUTTING THE SERVICE AT THE MAIN, PLUGGING THE CORPORATION, AND TURNING OFF THE CORPORATION. AT THE METER BOX, THE ABANDONED SERVICE IS TO BE CUT OR CRIMPED, AND BURIED A MINIMUM OF 3 FEET BELOW GRADE.
- ALL EXISTING UTILITIES IMPACTED BY CONSTRUCTION SHALL BE ADJUSTED TO FINISHED GRADE, IN ACCORDANCE WITH FAYPWC REQUIREMENTS.
- ALL WORK ON FAYPWC WATER UTILITIES (MAINS, LATERALS, ETC.) SHALL BE PERFORMED BY A LICENSED UTILITY CONTRACTOR. THE FAYETTEVILLE PUBLIC WORKS COMMISSION SHALL OBSERVE AND APPROVE ALL WORK ON FAYPWC WATER UTILITIES. ALL WORK SHALL BE COMPLETED IN ACCORDANCE WITH FAYPWC REQUIREMENTS.
- SEPARATION REQUIREMENTS:
 A. **LATERAL SEPARATION OF SEWERS AND WATER MAINS:** WATER MAINS SHALL BE LAID AT LEAST 10 FEET LATERALLY FROM EXISTING OR PROPOSED SEWER MAINLATERAL, UNLESS LOCAL CONDITIONS OR BARRIERS PREVENT A 10-FOOT LATERAL SEPARATION - IN WHICH CASE:
 i. THE WATER MAIN IS LAID IN A SEPARATE TRENCH, WITH THE ELEVATION OF THE BOTTOM OF THE WATER MAIN AT LEAST 18 INCHES ABOVE THE TOP OF THE SEWER MAINLATERAL; OR
 ii. THE WATER MAIN IS LAID IN THE SAME TRENCH AS THE SEWER MAINLATERAL WITH THE WATER MAIN LOCATED AT ONE SIDE ON A BENCH OF UNDISTURBED EARTH AND WITH THE ELEVATION OF THE BOTTOM OF THE WATER MAIN AT LEAST 18 INCHES ABOVE THE TOP OF THE SEWER MAINLATERAL.
 B. **CROSSING A WATER MAIN OVER A SEWER:** WHENEVER IT IS NECESSARY FOR A WATER MAIN TO CROSS OVER A SEWER MAINLATERAL, THE WATER MAIN SHALL BE LAID AT SUCH AN ELEVATION THAT THE BOTTOM OF THE WATER MAIN IS AT LEAST 18 INCHES ABOVE THE TOP OF THE SEWER MAINLATERAL, UNLESS LOCAL CONDITIONS OR BARRIERS PREVENT AN 18 INCH VERTICAL SEPARATION - IN WHICH CASE BOTH THE WATER MAIN AND SEWER MAINLATERAL SHALL BE DUCTILE IRON IN ACCORDANCE WITH FAYPWC REQUIREMENTS.
 C. **CROSSING WATER MAIN UNDER A SEWER:** WHENEVER IT IS NECESSARY FOR A WATER MAIN TO CROSS UNDER A SEWER MAINLATERAL, BOTH THE WATER MAIN AND THE SEWER MAINLATERAL SHALL BE DUCTILE IRON IN ACCORDANCE WITH FAYPWC REQUIREMENTS. A FULL JOINT OF DUCTILE IRON PIPE SHALL BE INSTALLED ON THE WATER MAIN CENTERED AT THE POINT OF CROSSING.
 D. **CROSSING STORM DRAINAGE LINES:** A MINIMUM OF 12 INCHES OF VERTICAL CLEARANCE SHALL BE MAINTAINED BETWEEN A WATER LINE CROSSING OVER A STORM DRAINAGE LINE UNLESS DUCTILE IRON PIPE IS USED. IN ADDITION, THREE AND A HALF (3.5) FEET OF COVER MUST BE MAINTAINED OVER THE WATER MAIN OR IT SHALL BE DUCTILE IRON. IF DUCTILE IRON PIPE IS USED THEN TWO AND A HALF (2.5) FEET OF COVER MUST BE MAINTAINED OVER THE WATER MAIN AND A MINIMUM OF 4 INCHES OF VERTICAL CLEARANCE SHALL BE MAINTAINED BETWEEN THE WATER MAIN AND THE STORM DRAINAGE LINE. WHERE A WATER MAIN CROSSES UNDER A STORM DRAINAGE LINE THE MINIMUM OF TWELVE (12) INCHES OF VERTICAL SEPARATION SHALL BE MAINTAINED AND THE WATER MAIN SHALL BE DUCTILE IRON FOR A DISTANCE OF 10 FEET ON EACH SIDE OF THE CROSSING.

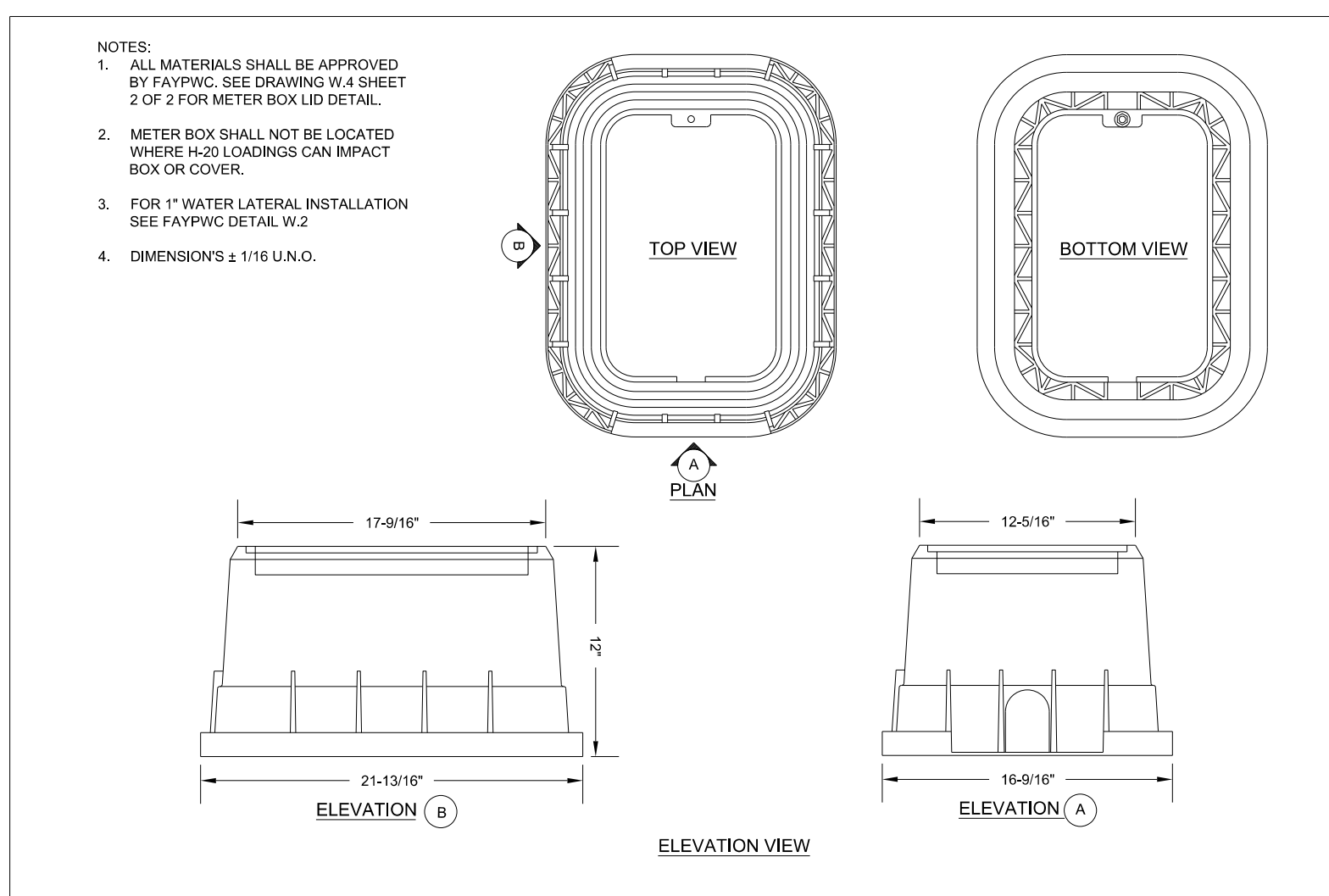
10. **WATER OUTAGES:** THE CONTRACTOR SHALL SCHEDULE A COORDINATION MEETING WITH THE FAYPWC PROJECT COORDINATOR AND PROJECT ENGINEER A MINIMUM OF THREE (3) WORKING DAYS PRIOR TO ANY PLANNED WATER OUTAGE. THE COORDINATION MEETING SHALL BE CONDUCTED PRIOR TO ANY NOTICES BEING ISSUED. ADDITIONALLY, THE CONTRACTOR SHALL LOCATE (VERTICALLY AND HORIZONTALLY) ANY UTILITIES WITHIN THE WORK AREA, IN ACCORDANCE WITH THESE CONTRACT DOCUMENTS. THE LOCATIONS OF ALL UTILITIES WITHIN THE WORK AREA SHALL BE DETERMINED PRIOR TO THE COORDINATION MEETING. ANY CONFLICTS WITH THE PENDING WORK AND THE EXISTING UTILITIES SHALL BE IDENTIFIED AND A PLAN FOR RESOLVING ANY CONFLICTS SHALL BE PRESENTED. THE PURPOSE OF THIS COORDINATION MEETING IS TO ENSURE THAT THE CONTRACTOR HAS A GOOD UNDERSTANDING OF THE REQUIREMENTS RELATED TO THE PENDING OUTAGE, VERIFY THAT THERE ARE NO UTILITY CONFLICTS THAT WILL PREVENT THE WORK FROM BEING COMPLETED, ALL EQUIPMENT IS IN GOOD WORKING ORDER, ALL EQUIPMENT IS FUNCTIONAL, ALL MATERIALS ARE ON SITE, ALL NECESSARY TOOLS ARE ON SITE, DISCUSS ANY NECESSARY CONTINGENCY PLANS, AND ANY OTHER ITEMS NECESSARY TO ENSURE THAT THE FAYETTEVILLE PUBLIC WORKS COMMISSION HAS CONFIDENCE THAT THE WORK CAN BE ACCOMPLISHED WITHIN THE GIVEN TIME PERIOD. SHOULD, FOR ANY REASON, THE FAYETTEVILLE PUBLIC WORKS COMMISSION DEEM THAT THE CONTRACTOR IS NOT PREPARED FOR THE PROPOSED OUTAGE, THE OUTAGE NOTIFICATIONS WILL NOT BE DISTRIBUTED AND THE OUTAGE SHALL BE POSTPONED A MINIMUM OF TWO (2) WEEKS. THE FAYETTEVILLE PUBLIC WORKS COMMISSION WILL PROVIDE WRITTEN NOTIFICATION TO THE CONTRACTOR OF THIS DECISION. NO ADDITIONAL CONTRACT TIME WILL BE GRANTED FOR THIS DELAY.

SHOULD THE CONTRACTOR FAIL TO COMPLETE THE WORK WITHIN THE ALLOTTED TIME, THE FAYETTEVILLE PUBLIC WORKS COMMISSION SHALL ASSESS A PENALTY OF \$500 PER 15-MINUTE INTERVAL OR ANY PORTION THEREOF UNTIL WATER SERVICE IS RESTORED. THIS PENALTY WILL BE DEDUCTED FROM THE CONTRACTOR'S PAY APPLICATION OR BILLED DIRECTLY TO THE CONTRACTOR. THE PENALTY MAY BE WAIVED FOR CIRCUMSTANCES BEYOND THE CONTRACTOR'S CONTROL, AS DEEMED BY THE FAYETTEVILLE PUBLIC WORKS COMMISSION. THE FAYPWC PROJECT COORDINATOR AND/OR PROJECT ENGINEER RESERVE THE RIGHT TO CANCEL OR POSTPONE THE OUTAGE AT ANY GIVEN TIME, IF DEEMED NECESSARY.

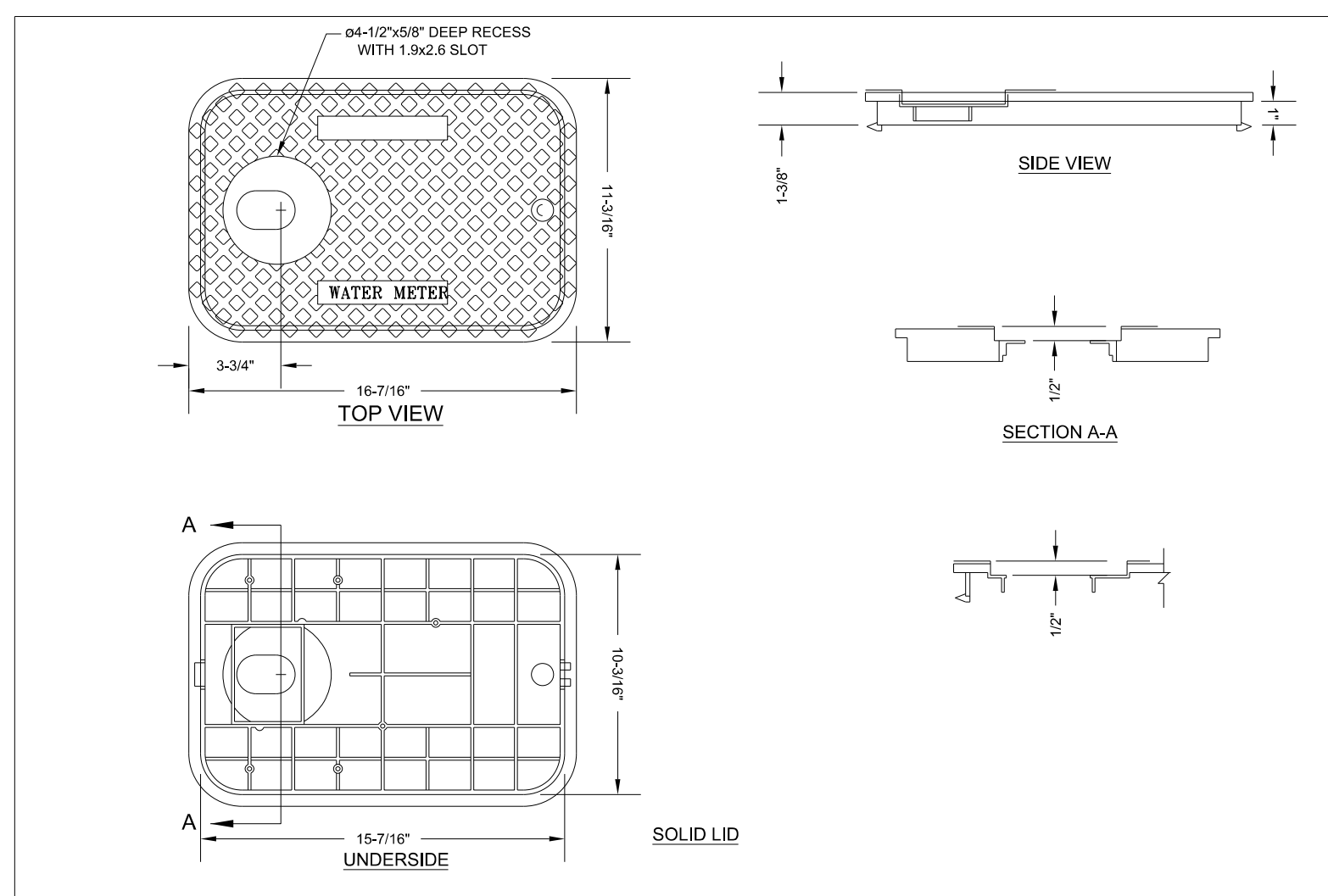
ONCE THE WATER OUTAGE NOTIFICATIONS HAVE BEEN ISSUED, A FOLLOW-UP COORDINATION MEETING WITH THE FAYPWC PROJECT COORDINATOR AND PROJECT ENGINEER SHALL BE HELD A MINIMUM OF 24 HOURS PRIOR TO THE SCHEDULED OUTAGE. THE PURPOSE OF THIS MEETING IS TO VERIFY THAT THE CONTRACTOR IS PREPARED TO PROCEED WITH THE OUTAGE, AND THAT ALL EQUIPMENT, MATERIALS, TOOLS, AND ALL OTHER INCIDENTALS ARE ON THE PROJECT SITE AND FUNCTIONING. IF FOR ANY REASON THE FAYETTEVILLE PUBLIC WORKS COMMISSION DEEMS THAT THE CONTRACTOR IS NOT PREPARED TO PROCEED WITH THE OUTAGE, THE OUTAGE SHALL BE POSTPONED AND ALL CUSTOMERS IMMEDIATELY NOTIFIED OF THE CANCELLATION. THE OUTAGE SHALL BE POSTPONED A MINIMUM OF TWO (2) WEEKS. NO ADDITIONAL CONTRACT TIME WILL BE GRANTED FOR THIS DELAY.

WATER UTILITY NOTES				FAYETTEVILLE PUBLIC WORKS COMMISSION FAYETTEVILLE, N.C.	
SHEET NO. 1 OF 2	DWG. NO. W.1	DWG. BY: FAYPWC	DATE: JAN. 01, 2021	APPROVED BY: J.E.G.	WATER RESOURCES ENGINEERING DEPARTMENT
				NO. DATE REVISION	
				1 07/11 REVISED NOTES AND ADDED NOTE 6	
				2 07/01/16 ADDED NOTE 6	
				3 01/01/18 ADDED NOTES 6, 8	

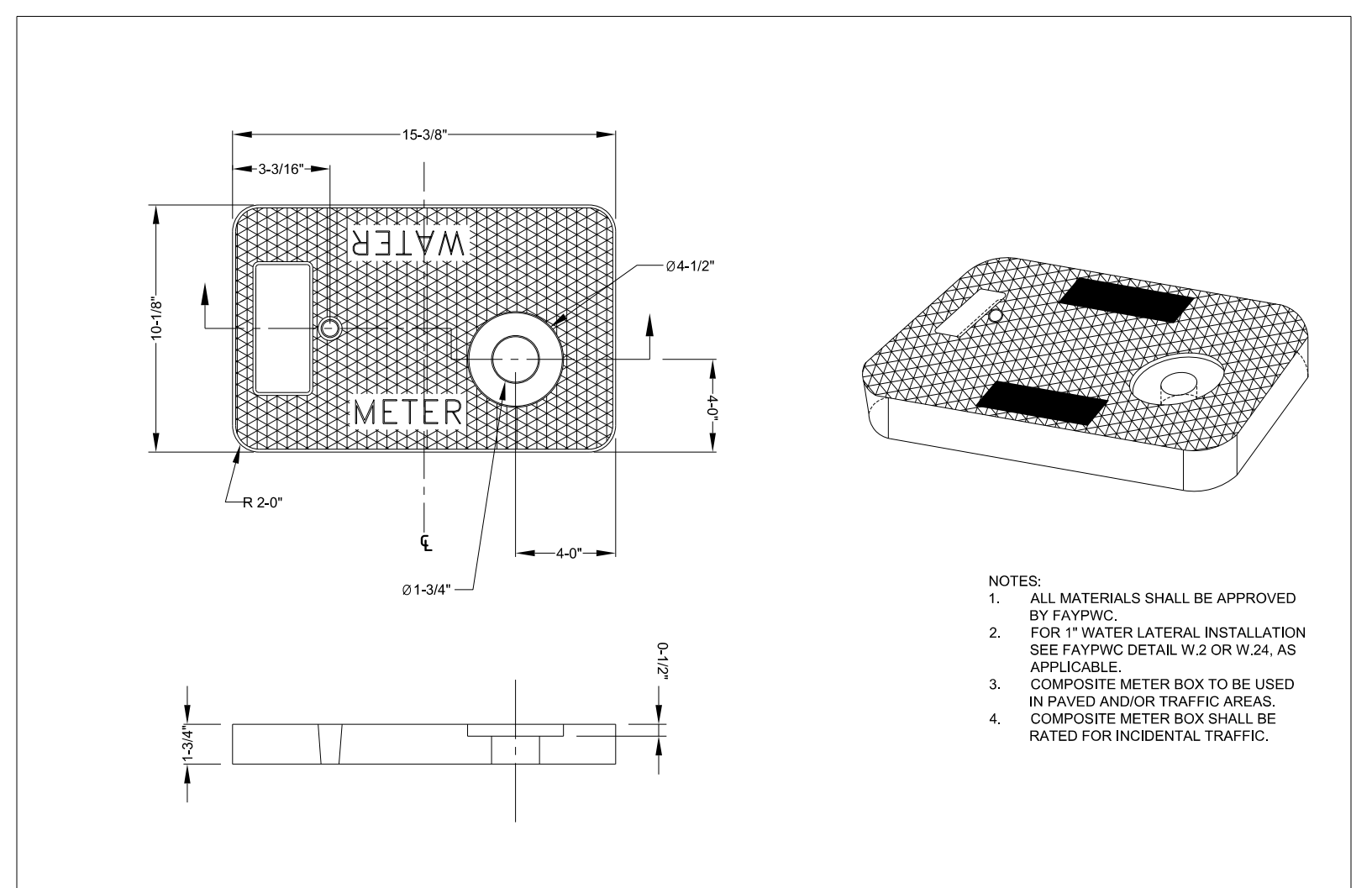
WATER UTILITY NOTES				FAYETTEVILLE PUBLIC WORKS COMMISSION FAYETTEVILLE, N.C.	
SHEET NO. 2 OF 2	DWG. NO. W.1	DWG. BY: FAYPWC	DATE: JAN. 01, 2021	APPROVED BY: J.E.G.	WATER RESOURCES ENGINEERING DEPARTMENT
				NO. DATE REVISION	
				1 07/11 REVISED NOTES AND ADDED NOTE 6	
				2 07/01/16 ADDED NOTE 6	
				3 01/01/18 ADDED NOTES 6, 8	



1-INCH METER BOX DETAILS				FAYETTEVILLE PUBLIC WORKS COMMISSION FAYETTEVILLE, N.C.	
N.T.S.				WATER RESOURCES ENGINEERING DEPARTMENT	
SHEET NO. 1 OF 2	DWG. NO. W.4	DWG. BY: FAYPWC	DATE: JAN. 01, 2021	APPROVED BY: J.E.G.	
				NO. DATE REVISION	
				1 03/10 CHANGED BOX DIMENSIONS	



1-INCH METER BOX LID				FAYETTEVILLE PUBLIC WORKS COMMISSION FAYETTEVILLE, N.C.	
N.T.S.				WATER RESOURCES ENGINEERING DEPARTMENT	
SHEET NO. 2 OF 2	DWG. NO. W.4	DWG. BY: FAYPWC	DATE: JAN. 01, 2021	APPROVED BY: J.E.G.	
				NO. DATE REVISION	
				1 07/07 REVISED LID	
				2 03/10 CHANGED BOX AND LID DIMENSIONS	
				3 01/15 REVISED LID	



1-INCH COMPOSITE METER BOX & COVER				FAYETTEVILLE PUBLIC WORKS COMMISSION FAYETTEVILLE, N.C.	
N.T.S.				WATER RESOURCES DEPARTMENT	
SHEET NO. 1 OF 2	DWG. NO. W.4B	DWG. BY: FAYPWC	DATE: JAN. 01, 2021	APPROVED BY: J.E.G.	
				NO. DATE REVISION	
				1 03/10 CHANGED BOX & LID DIMENSIONS	
				2 12/15 REPLACED CI BOX w/COMPOSITE BOX	

05-OCT-2021 11:51 AM
 C:\Users\jgibson\Documents\Fayetteville Public Works Commission\2015017700RA_Roeford Road NCDOT U 4405\CADD\NCDOT_PLANS\Utilities\Engineering\UC\Proc\U4405A_ut_dt_UC03C_psh.dgn
 5/14/99
 UTILITY REV. - JULY 24, 2018 - REVISIONS TO DETAIL SHEETS