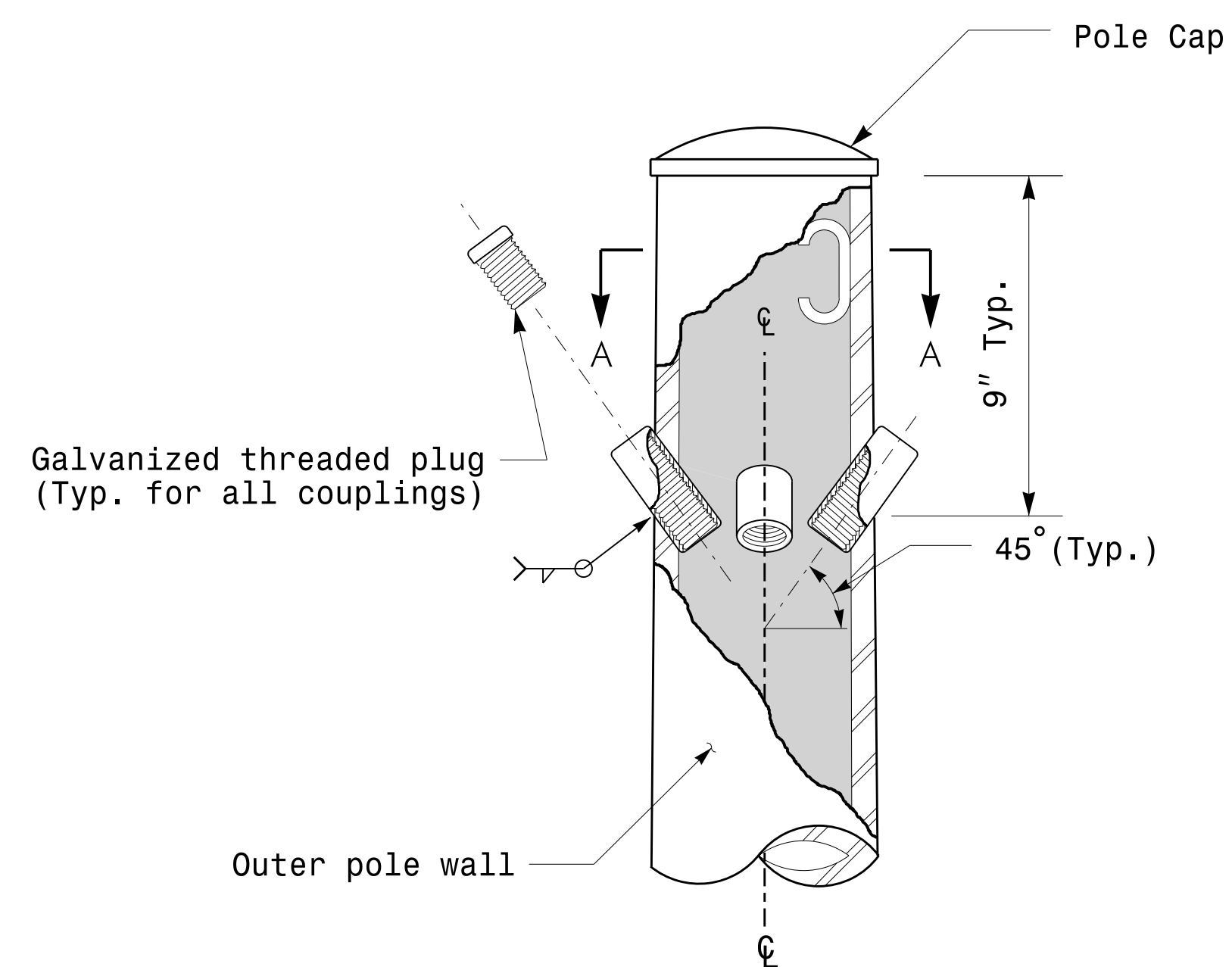
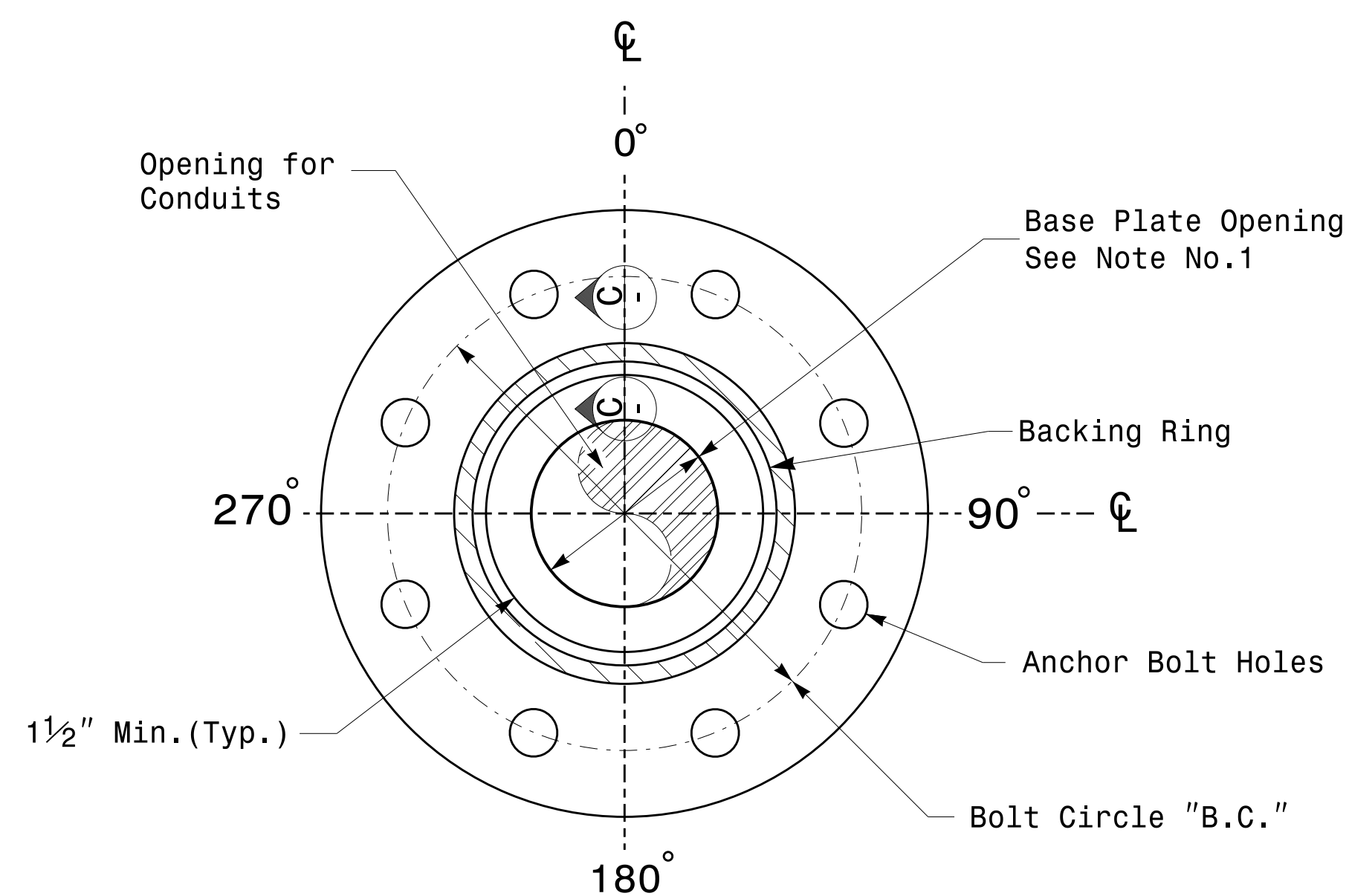


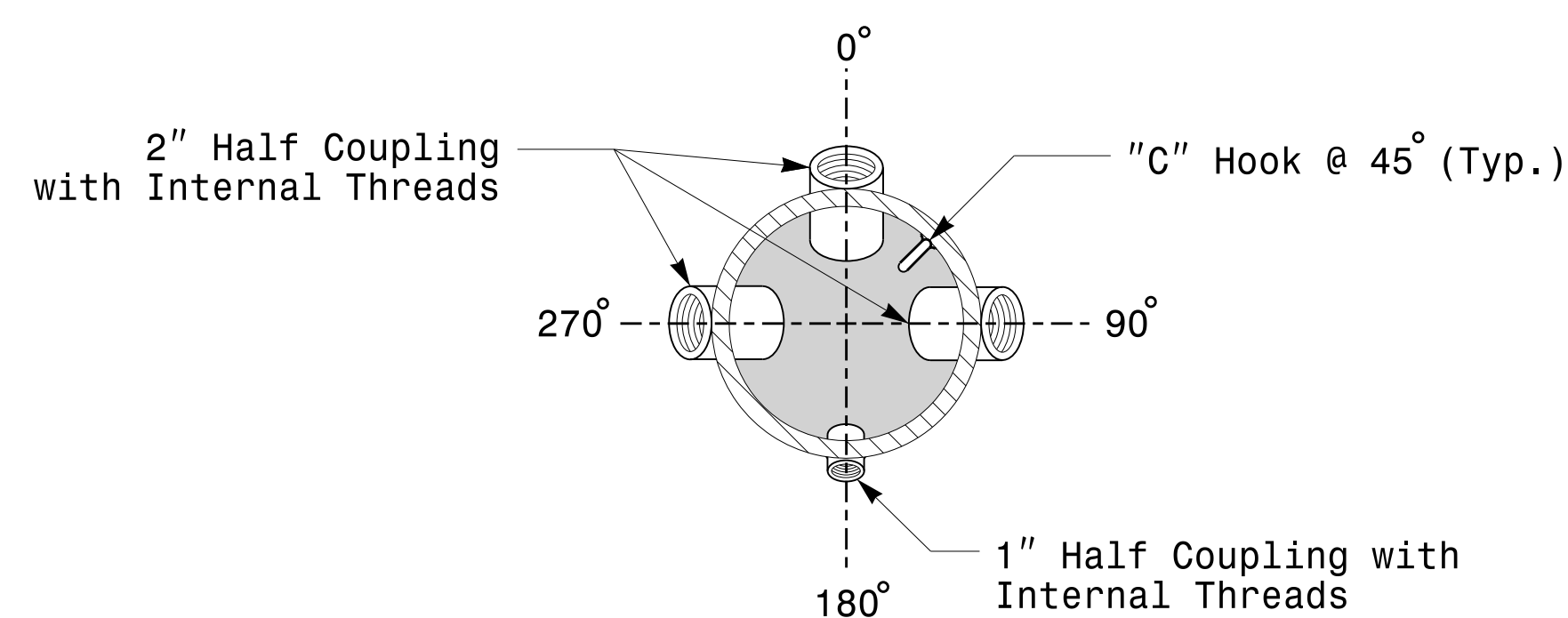
Note:
 1. Opening in pole base plate shall be equal to pole base inside diameter minus 3 1/2" but shall not be less than 8 1/2".



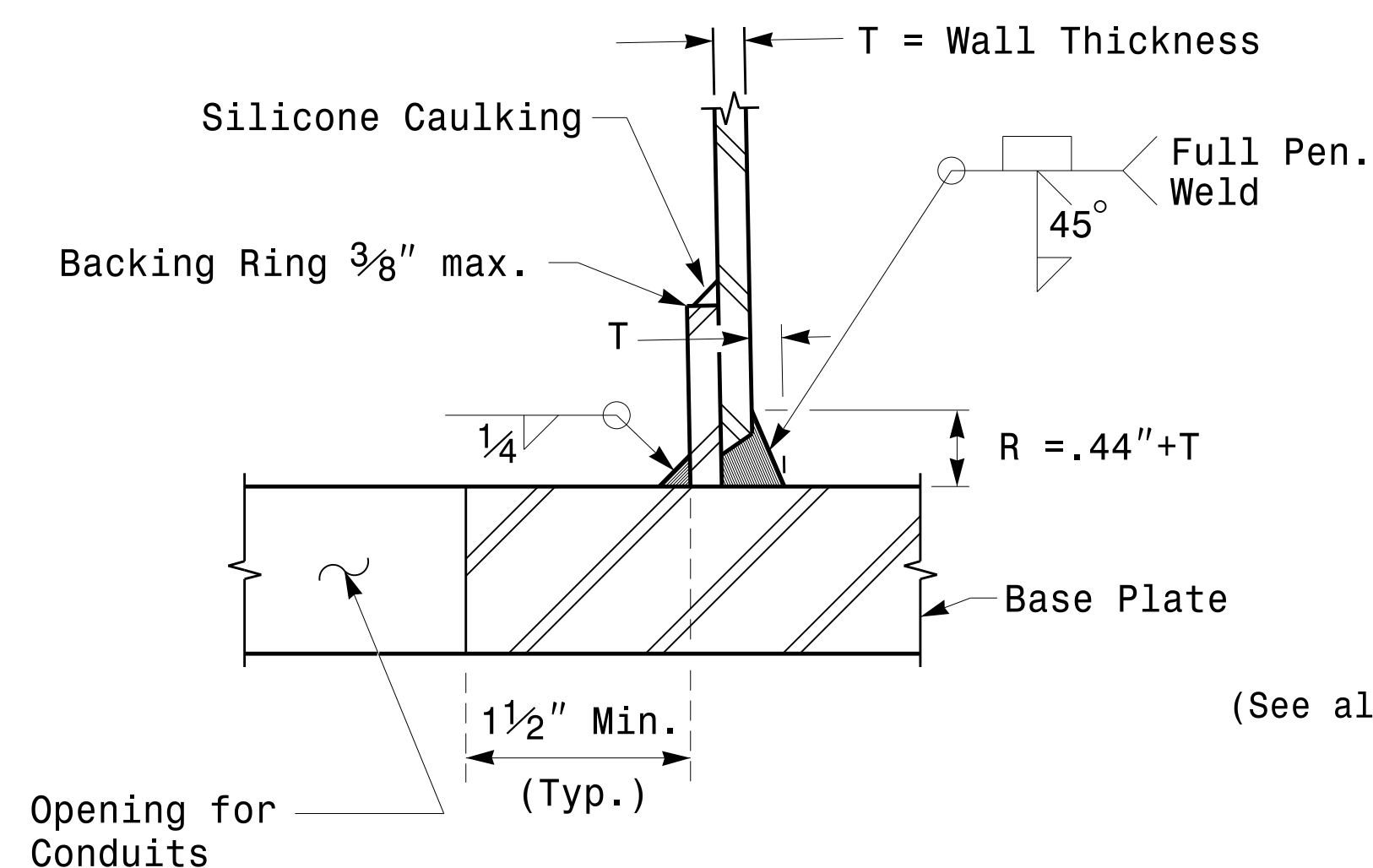
Cable Entrances at Top of Pole



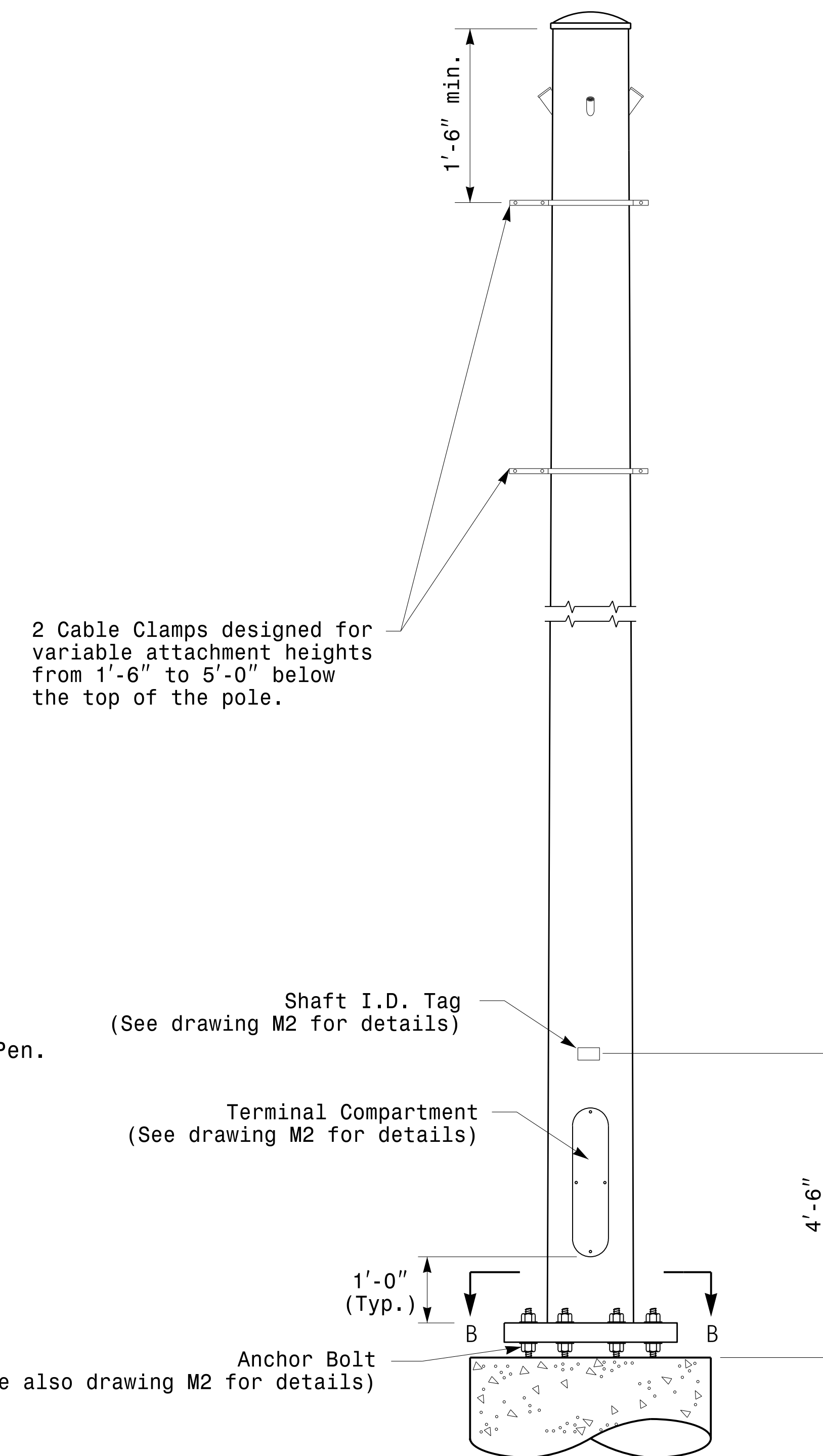
Section B-B
Pole Base Plate Details
(8 and 12 Bolt Pattern)



Section A-A
Radial Orientation for Factory Installed
Accessories at Top of Pole



Section C-C
(Pole Attachment to Base Plate)
Full-Penetration
Groove Weld Detail



Monotube Strain Pole

| | | | |
|--|--|---|--|
| Prepared In the Offices of: 750 N. Greenleaf Pkwy, Garner, NC 27529 | Typical Fabrication Details For Strain Poles | | SEAL DocuSigned by: Debesh C. Sarkar 44EB87816FA4F49E |
| | PLAN DATE: OCTOBER 2017 PREPARED BY: N. BITTING | DESIGNED BY: K.C. DURIGON REVIEWED BY: D.C. SARKAR | |
| DATE: 10/11/2017 | | | DATE: _____ |

Fabrication Details – Strain Poles