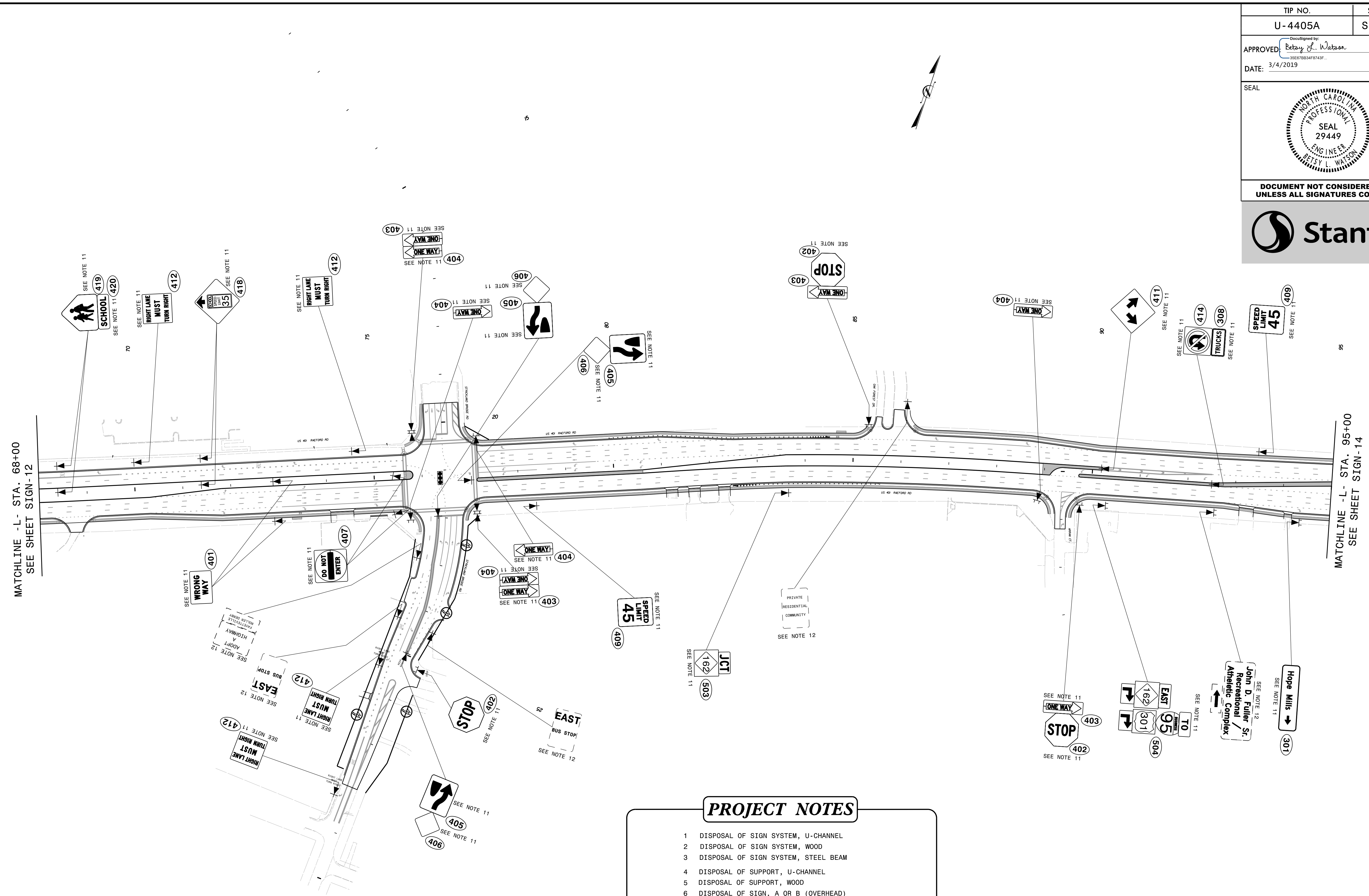


TIP NO.	SHEET NO.
U-4405A	SIGN-13
APPROVED: <i>Betsy L. Watson</i> 35E78B34F8743F...	
DATE: 3/4/2019	
SEAL	
DOCUMENT NOT CONSIDERED FINAL UNLESS ALL SIGNATURES COMPLETED	



- PROJECT NOTES**
- DISPOSAL OF SIGN SYSTEM, U-CHANNEL
 - DISPOSAL OF SIGN SYSTEM, WOOD
 - DISPOSAL OF SIGN SYSTEM, STEEL BEAM
 - DISPOSAL OF SUPPORT, U-CHANNEL
 - DISPOSAL OF SUPPORT, WOOD
 - DISPOSAL OF SIGN, A OR B (OVERHEAD)
 - DISPOSAL OF SIGN SYSTEM ON SPANWIRE
 - RELOCATE SIGN, TYPE D
 - SIGN ERECTION, TYPE A (OVERHEAD)
 - SIGN ERECTION, TYPE A (GROUND MOUNTED)
 - SIGN ERECTION, TYPE D, E, AND F
 - SIGN ERECTION, RELOCATE SIGN TYPE D

PROPOSED SIGNING
(-L- Sta. 68+00 to -L- Sta. 95+00)

2/25/2019
 U:\Traffic\Signing\CADD\Signing\U-4405A\Signing Plan Sheets\Proposed Signing\U-4405A_PROPOSED_SIGN_13.dgn
 jhambright