

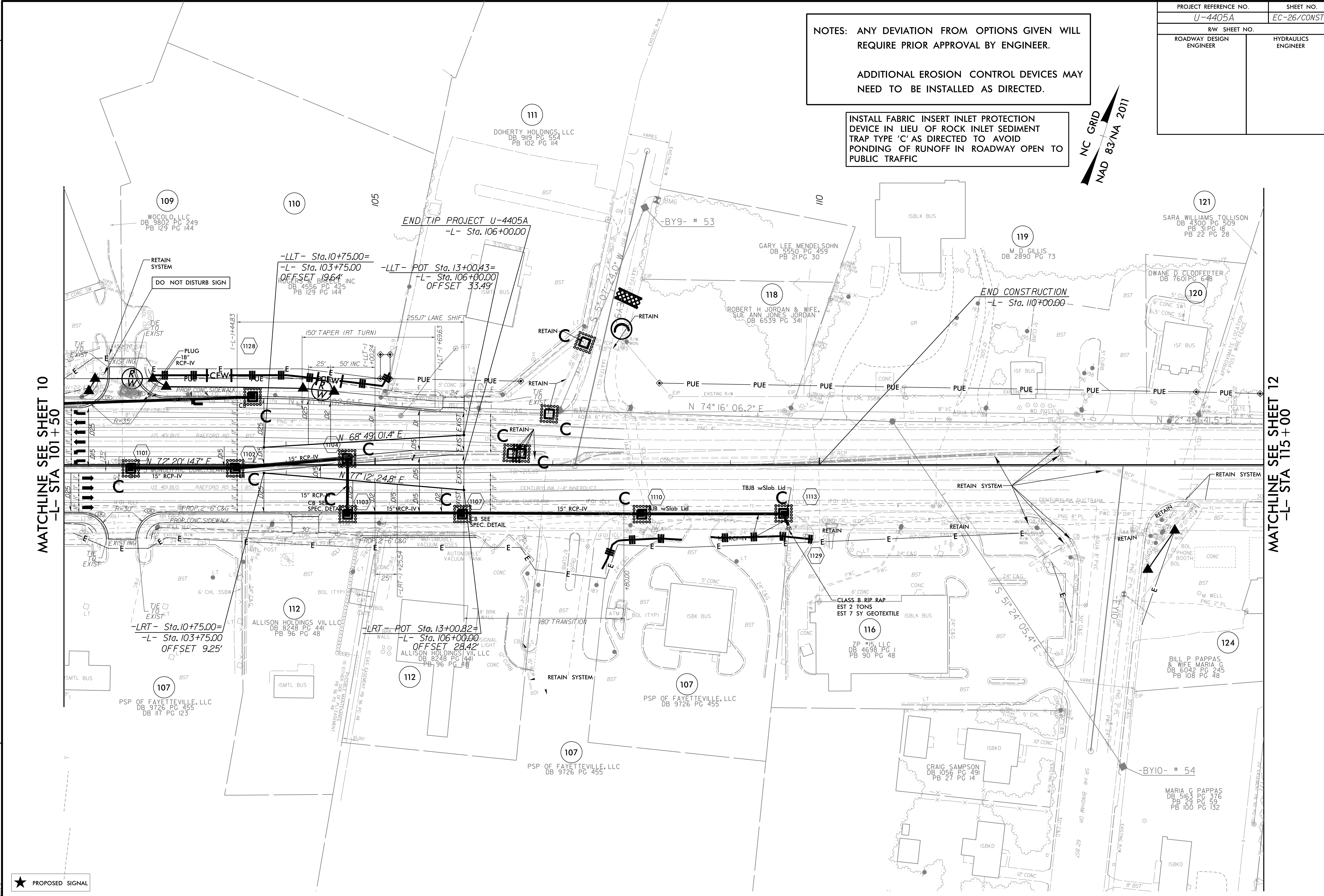
PROJECT REFERENCE NO.	SHEET NO.
U-4405A	EC-26/CONST.II
R/W SHEET NO.	
ROADWAY DESIGN ENGINEER	HYDRAULICS ENGINEER

NOTES: ANY DEVIATION FROM OPTIONS GIVEN WILL REQUIRE PRIOR APPROVAL BY ENGINEER.

ADDITIONAL EROSION CONTROL DEVICES MAY NEED TO BE INSTALLED AS DIRECTED.

INSTALL FABRIC INSERT INLET PROTECTION DEVICE IN LIEU OF ROCK INLET SEDIMENT TRAP TYPE 'C' AS DIRECTED TO AVOID PONDING OF RUNOFF IN ROADWAY OPEN TO PUBLIC TRAFFIC

NC GRID
NAD 83/NA 2011



MATCHLINE SEE SHEET 10
-L- STA 101 + 50

MATCHLINE SEE SHEET 12
-L- STA 115 + 00

★ PROPOSED SIGNAL

▬ PROP CONC SIDEWALK

** A DESIGN EXCEPTION FOR LANE WIDTH IS REQUIRED FOR -L- STA. 38 + 95.00 TO -L- 319 + 95.00

NOTE: SEE SHEET 36 FOR -L- PROFILE
SEE SHEET 47 FOR -Y9- PROFILE
SEE SHEET 47 FOR -Y10- PROFILE

REVISIONS

8/17/99

7/6/2021
U-4405A_REU_EC_psh_11.dgn
11/11/2021