

PROJECT REFERENCE NO.	SHEET NO.
U-4405A	EC-19/CONST.04
R/W SHEET NO.	HYDRAULICS ENGINEER
ROADWAY DESIGN ENGINEER	

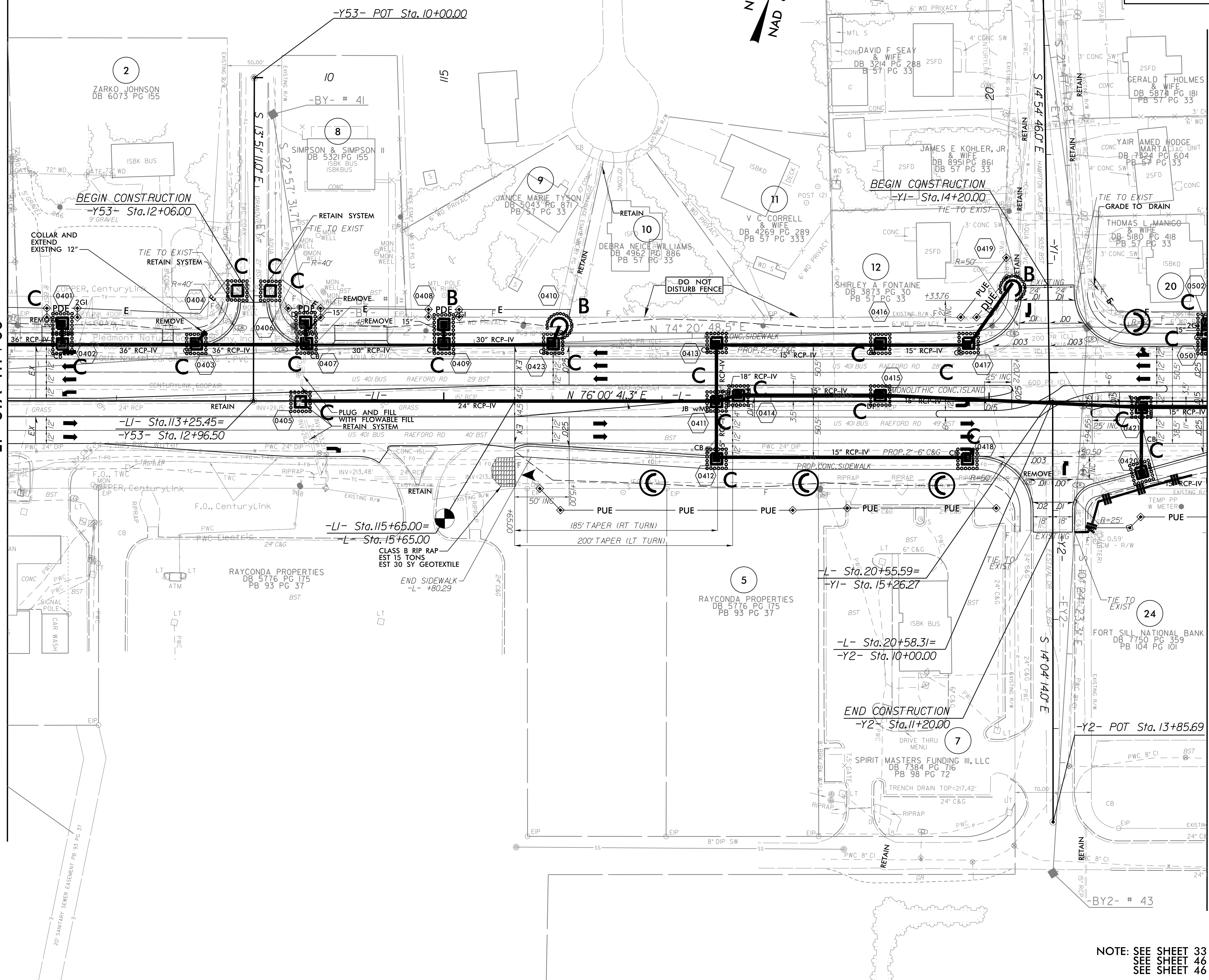
NOTES: ANY DEVIATION FROM OPTIONS GIVEN WILL REQUIRE PRIOR APPROVAL BY ENGINEER.

ADDITIONAL EROSION CONTROL DEVICES MAY NEED TO BE INSTALLED AS DIRECTED.

INSTALL FABRIC INSERT INLET PROTECTION DEVICE IN LIEU OF ROCK INLET SEDIMENT TRAP TYPE 'C' AS DIRECTED TO AVOID PONDING OF RUNOFF IN ROADWAY OPEN TO PUBLIC TRAFFIC

MATCHLINE SEE SHEET 4B
-L1- STA 11+00

MATCHLINE SEE SHEET 5
-L- STA 22+00



REVISIONS

8/17/99

7/6/2021
U:\4405\REV\EC_psh_04_Final.dgn
US:R:\1011

PROP CONC SIDEWALK

NOTE: SEE SHEET 33 FOR -L- PROFILE
SEE SHEET 46 FOR -Y1- PROFILE
SEE SHEET 46 FOR -Y2- PROFILE