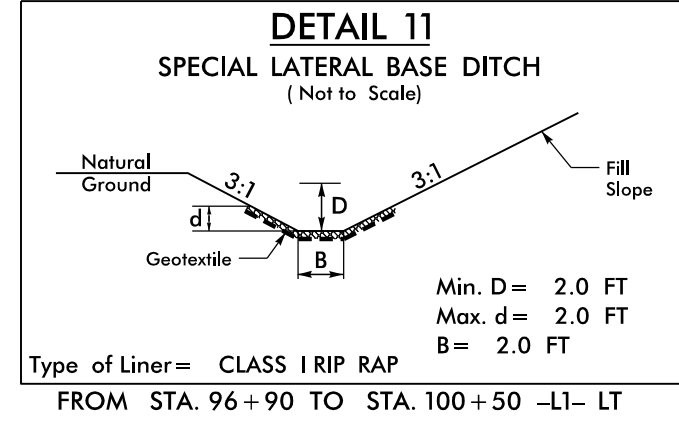
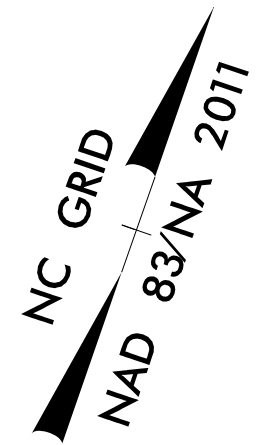
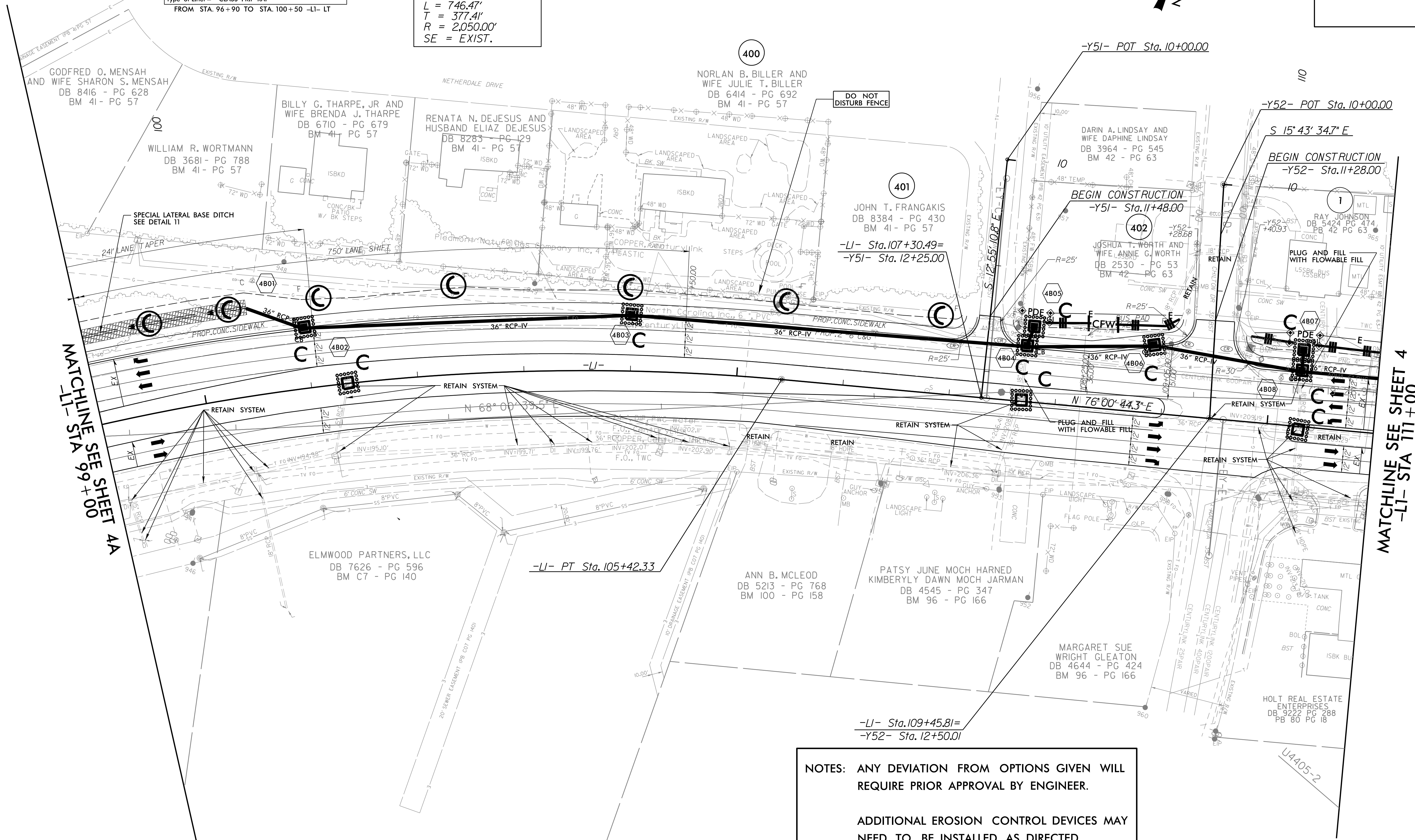


| | |
|-------------------------|---------------------|
| PROJECT REFERENCE NO. | SHEET NO. |
| U-4405A | EC-18/CONST. 4B |
| RW SHEET NO. | |
| ROADWAY DESIGN ENGINEER | HYDRAULICS ENGINEER |



-LI-

PI Sta 101+73.28
Δ = 20° 51' 47.4" (RT)
D = 2' 47' 41.7"
L = 746.47'
T = 377.41'
R = 2,050.00'
SE = EXIST.



MATCHLINE SEE SHEET 4A
-LI- STA 99+00

MATCHLINE SEE SHEET 4
-LI- STA 111+00

NOTES: ANY DEVIATION FROM OPTIONS GIVEN WILL REQUIRE PRIOR APPROVAL BY ENGINEER.

ADDITIONAL EROSION CONTROL DEVICES MAY NEED TO BE INSTALLED AS DIRECTED.

INSTALL FABRIC INSERT INLET PROTECTION DEVICE IN LIEU OF ROCK INLET SEDIMENT TRAP TYPE 'C' AS DIRECTED TO AVOID PONDING OF RUNOFF IN ROADWAY OPEN TO PUBLIC TRAFFIC

NOTE: SEE SHEET 52 FOR -LI- PROFILE

REVISIONS

8/17/99

7/6/2021
U:\4405-REV\EC_psh_04B_Final.dgn
User: j...@...