

PROJECT REFERENCE NO. U-4405A	SHEET NO. EC-15/CONST.28
RW SHEET NO.	
ROADWAY DESIGN ENGINEER	HYDRAULICS ENGINEER

CLEARING AND GRUBBING
EROSION CONTROL FOR
CONSTRUCTION SHEET 28

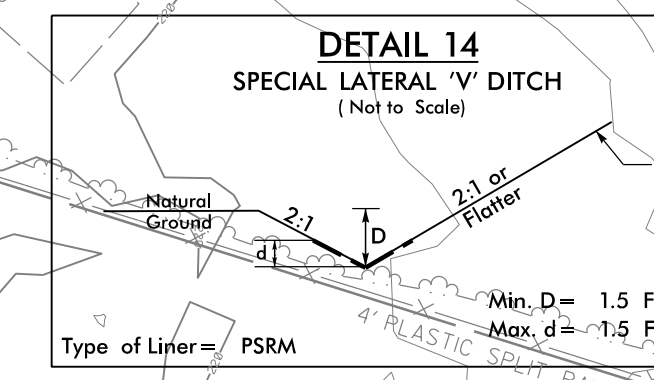
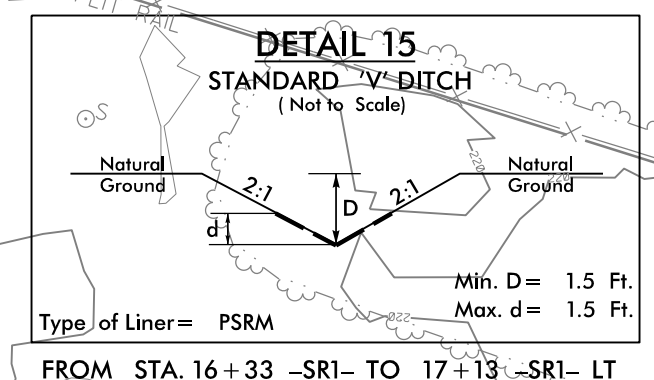
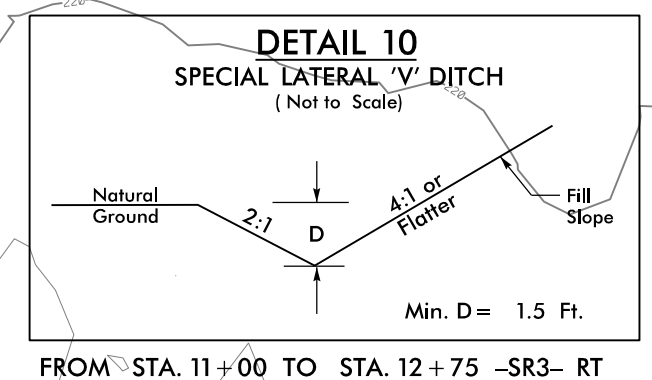
NOTE:
PLACE TEMPORARY ROCK SEDIMENT DAMS TYPE - B
AND TEMPORARY ROCK SILT CHECKS TYPE - A AT
DRAINAGE OUTLETS.

-SRI-
PI Sta 10+21.53
 $\Delta = 24' 17" 47.3" (RT)$
D = 57' 17" 44.8"
L = 42.41'
T = 21.53'
R = 100.00'

PI Sta 15+10.69
 $\Delta = 82' 12" 52.6" (RT)$
D = 38' 11" 49.9"
L = 215.24'
T = 130.89'
R = 150.00'

-SR2-
PI Sta 10+53.27
 $\Delta = 38' 01" 27.0" (LT)$
D = 57' 17" 44.8"
L = 66.36'
T = 34.46'
R = 100.00'

PI Sta 11+85.78
 $\Delta = 42' 31" 25.6" (RT)$
D = 28' 38" 52.4"
L = 148.44'
T = 77.82'
R = 200.00'

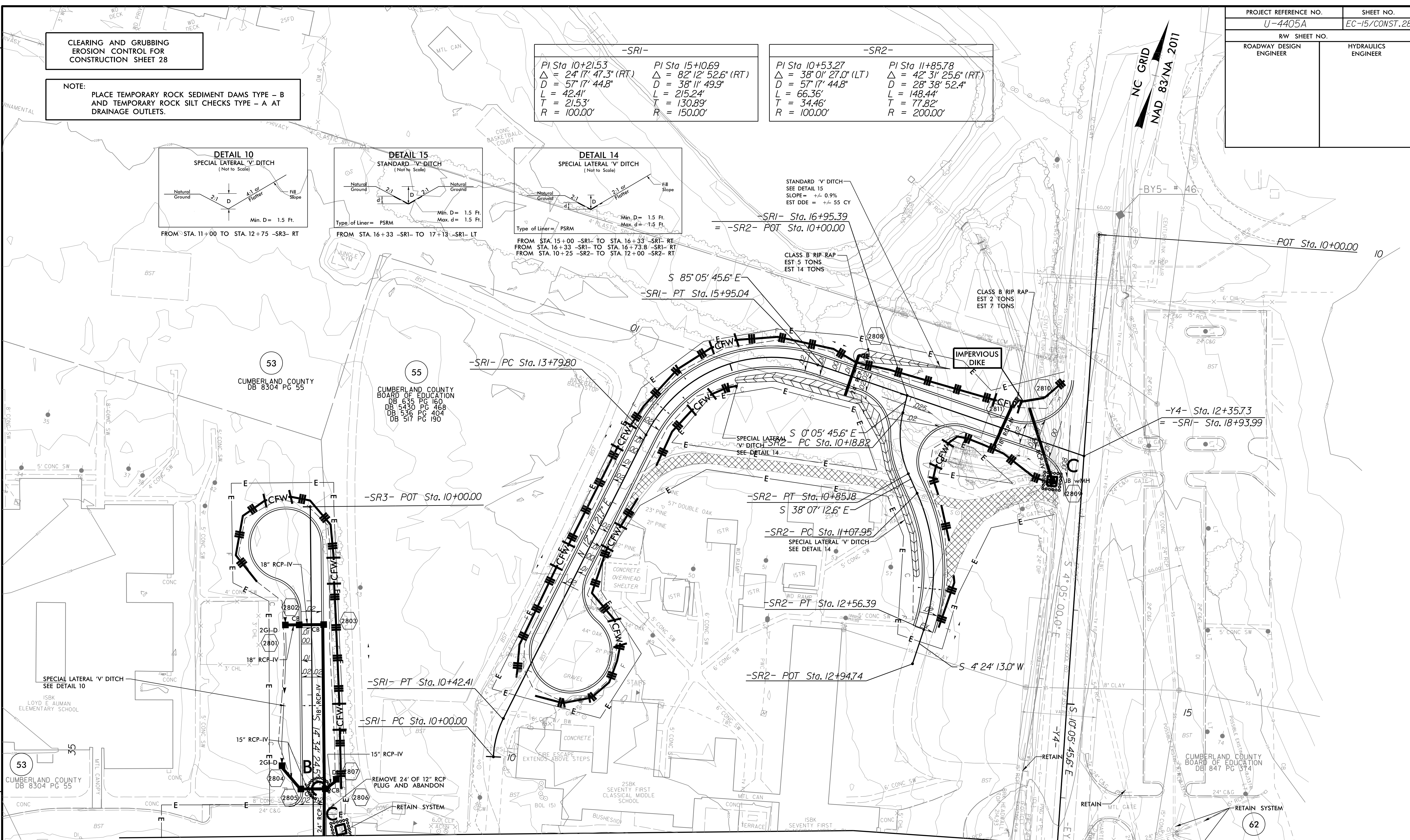


STANDARD 'V' DITCH
SEE DETAIL 15
SLOPE = +/- 0.9%
EST DDE = +/- 55 CY

CLASS B RIP RAP
EST 5 TONS
EST 14 TONS

CLASS B RIP RAP
EST 2 TONS
EST 7 TONS

IMPERVIOUS
DIKE



MATCHLINE SEE SHEET 6
-SR3- STA 13+50

MATCHLINE SEE SHEET 6
-Y4- STA 16+50

NOTES: ANY DEVIATION FROM OPTIONS GIVEN WILL
REQUIRE PRIOR APPROVAL BY ENGINEER.

ADDITIONAL EROSION CONTROL DEVICES MAY
NEED TO BE INSTALLED AS DIRECTED.

INSTALL FABRIC INSERT INLET PROTECTION
DEVICE IN LIEU OF ROCK INLET SEDIMENT
TRAP TYPE 'C' AS DIRECTED TO AVOID
PONDING OF RUNOFF IN ROADWAY OPEN TO
PUBLIC TRAFFIC

NOTE: SEE SHEET 50 FOR -SRI- PROFILE
SEE SHEET 51 FOR -SR2- PROFILE
SEE SHEET 51 FOR -SR3- PROFILE

7/6/2021
15:44:03=REV.UC_psh_28-CG.dgn
15:44:03=REV.UC_psh_28-CG.dgn

REVISIONS