

PROJECT REFERENCE NO.	SHEET NO.
U-4405A	EC-06/CONST.04
RW SHEET NO.	
ROADWAY DESIGN ENGINEER	HYDRAULICS ENGINEER

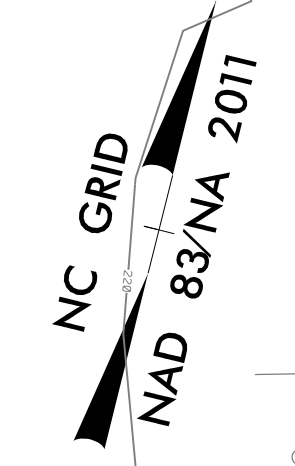
NOTES: ANY DEVIATION FROM OPTIONS GIVEN WILL REQUIRE PRIOR APPROVAL BY ENGINEER.

ADDITIONAL EROSION CONTROL DEVICES MAY NEED TO BE INSTALLED AS DIRECTED.

INSTALL FABRIC INSERT INLET PROTECTION DEVICE IN LIEU OF ROCK INLET SEDIMENT TRAP TYPE 'C' AS DIRECTED TO AVOID PONDING OF RUNOFF IN ROADWAY OPEN TO PUBLIC TRAFFIC

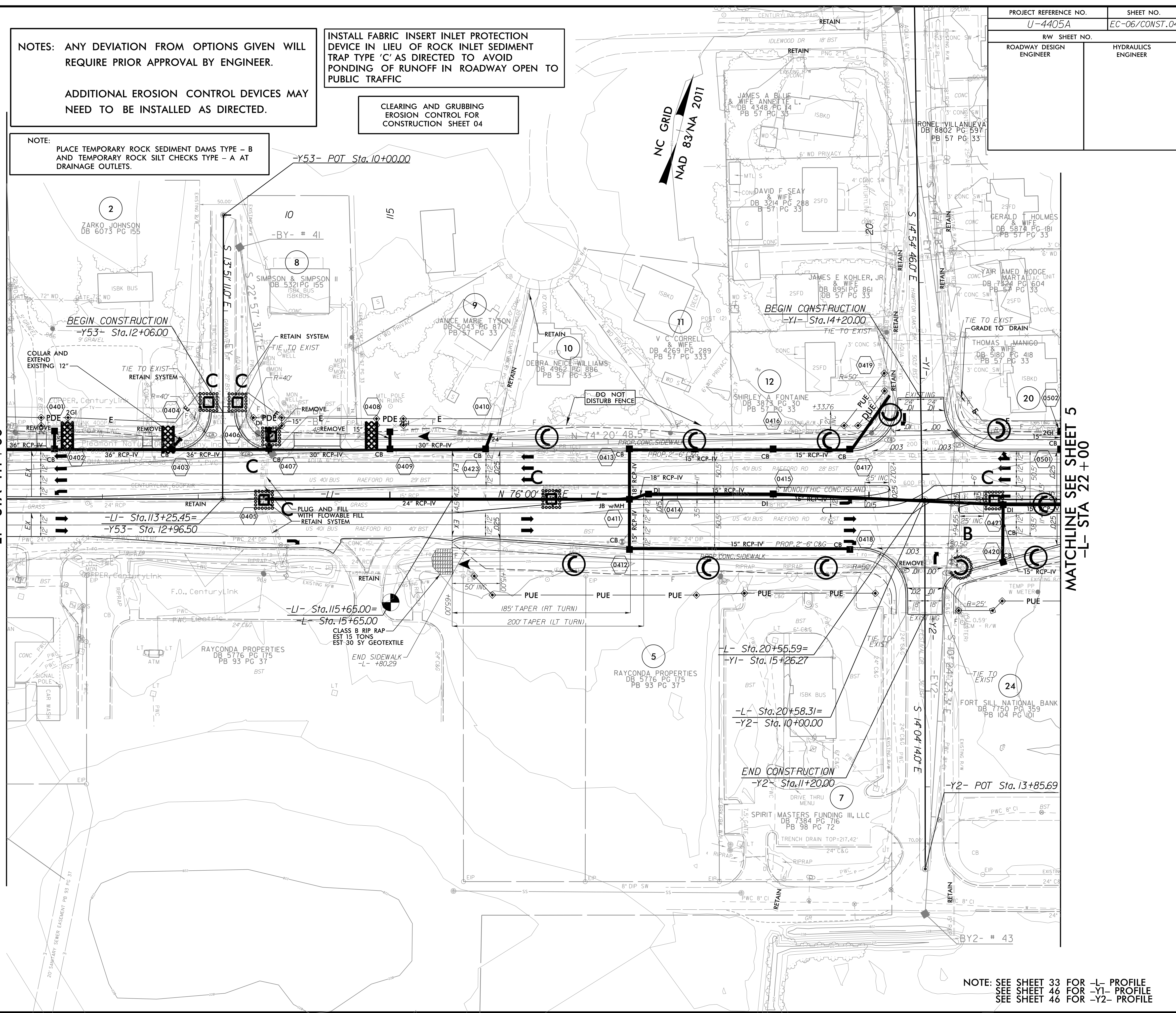
CLEARING AND GRUBBING EROSION CONTROL FOR CONSTRUCTION SHEET 04

NOTE: PLACE TEMPORARY ROCK SEDIMENT DAMS TYPE - B AND TEMPORARY ROCK SILT CHECKS TYPE - A AT DRAINAGE OUTLETS.



MATCHLINE SEE SHEET 4B  
-L1- STA 11+00

MATCHLINE SEE SHEET 5  
-L- STA 22+00



REVISIONS

8/17/99

7/6/2021  
U:\4405\REV\EC\_psh\_04\_C.G.dgn  
US:Eric

PROP CONC SIDEWALK

NOTE: SEE SHEET 33 FOR -L- PROFILE  
SEE SHEET 46 FOR -Y1- PROFILE  
SEE SHEET 46 FOR -Y2- PROFILE