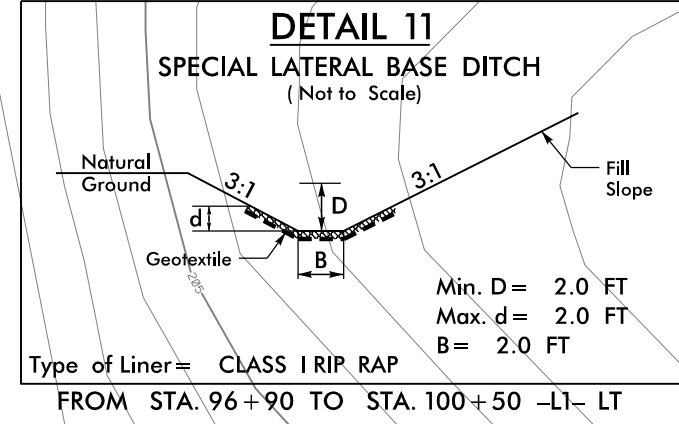


PROJECT REFERENCE NO.	SHEET NO.
U-4405A	EC-05/CONST. 4B
RW SHEET NO.	
ROADWAY DESIGN ENGINEER	HYDRAULICS ENGINEER

CLEARING AND GRUBBING  
EROSION CONTROL FOR  
CONSTRUCTION SHEET 4B

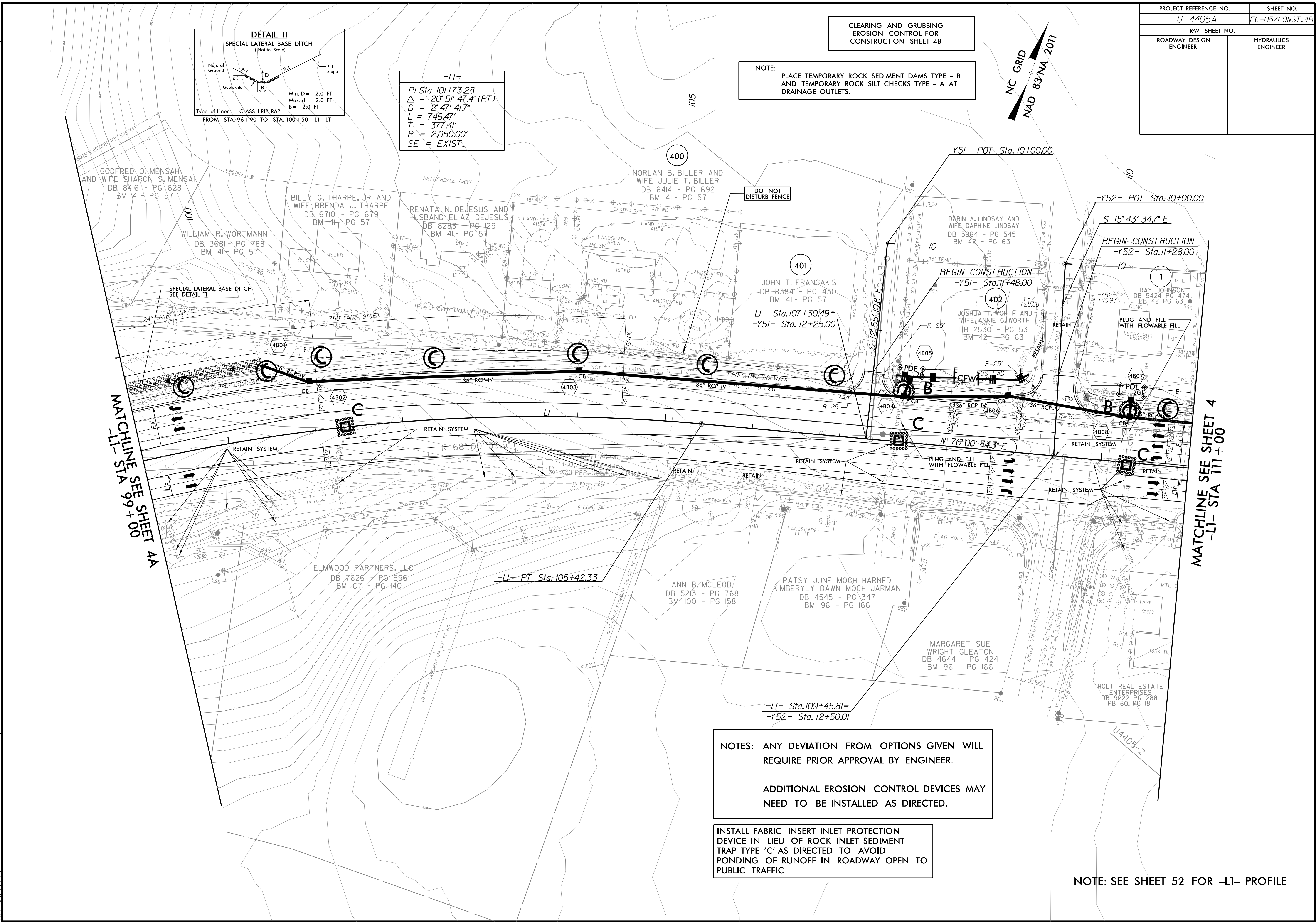
NC GRID  
NAD 83/NA 2011

NOTE:  
PLACE TEMPORARY ROCK SEDIMENT DAMS TYPE - B  
AND TEMPORARY ROCK SILT CHECKS TYPE - A AT  
DRAINAGE OUTLETS.



-LI-  
PI Sta 101+73.28  
 $\Delta = 20' 51" 47.4" (RT)$   
D = 2' 47" 41.7"  
L = 746.47'  
T = 377.41'  
R = 2,050.00'  
SE = EXIST.

8/17/99  
7/6/2021  
U4405-REV.UC\_psh\_04B.dgn  
USF



NOTES: ANY DEVIATION FROM OPTIONS GIVEN WILL  
REQUIRE PRIOR APPROVAL BY ENGINEER.

ADDITIONAL EROSION CONTROL DEVICES MAY  
NEED TO BE INSTALLED AS DIRECTED.

INSTALL FABRIC INSERT INLET PROTECTION  
DEVICE IN LIEU OF ROCK INLET SEDIMENT  
TRAP TYPE 'C' AS DIRECTED TO AVOID  
PONDING OF RUNOFF IN ROADWAY OPEN TO  
PUBLIC TRAFFIC

NOTE: SEE SHEET 52 FOR -LI- PROFILE