

PROJECT REFERENCE NO.	SHEET NO.
U-4405A	EC-04/CONST. 4A
RW SHEET NO.	
ROADWAY DESIGN ENGINEER	HYDRAULICS ENGINEER

CLEARING AND GRUBBING  
EROSION CONTROL FOR  
CONSTRUCTION SHEET 4A

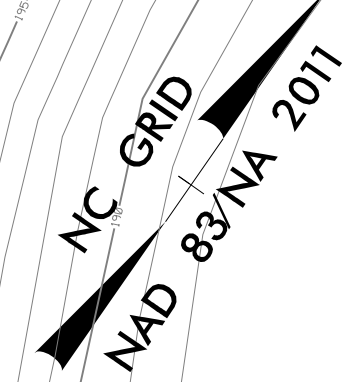
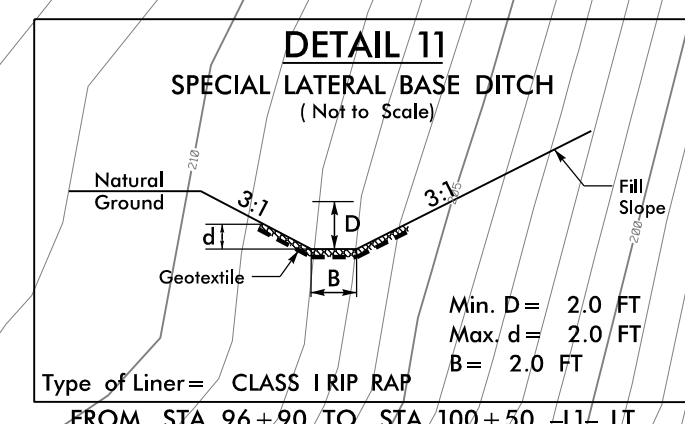
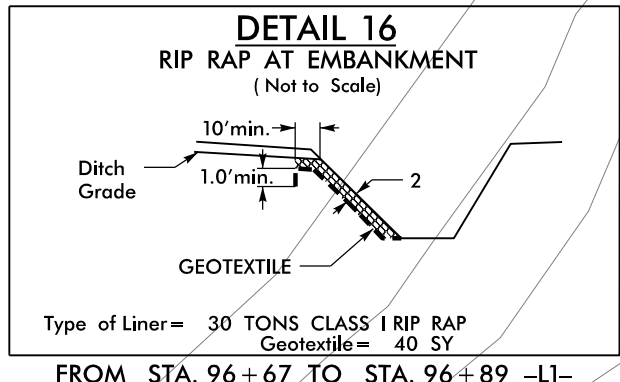
NOTE:  
PLACE TEMPORARY ROCK SEDIMENT DAMS TYPE - B  
AND TEMPORARY ROCK SILT CHECKS TYPE - A AT  
DRAINAGE OUTLETS.

NOTES: ANY DEVIATION FROM OPTIONS GIVEN WILL  
REQUIRE PRIOR APPROVAL BY ENGINEER.

ADDITIONAL EROSION CONTROL DEVICES MAY  
NEED TO BE INSTALLED AS DIRECTED.

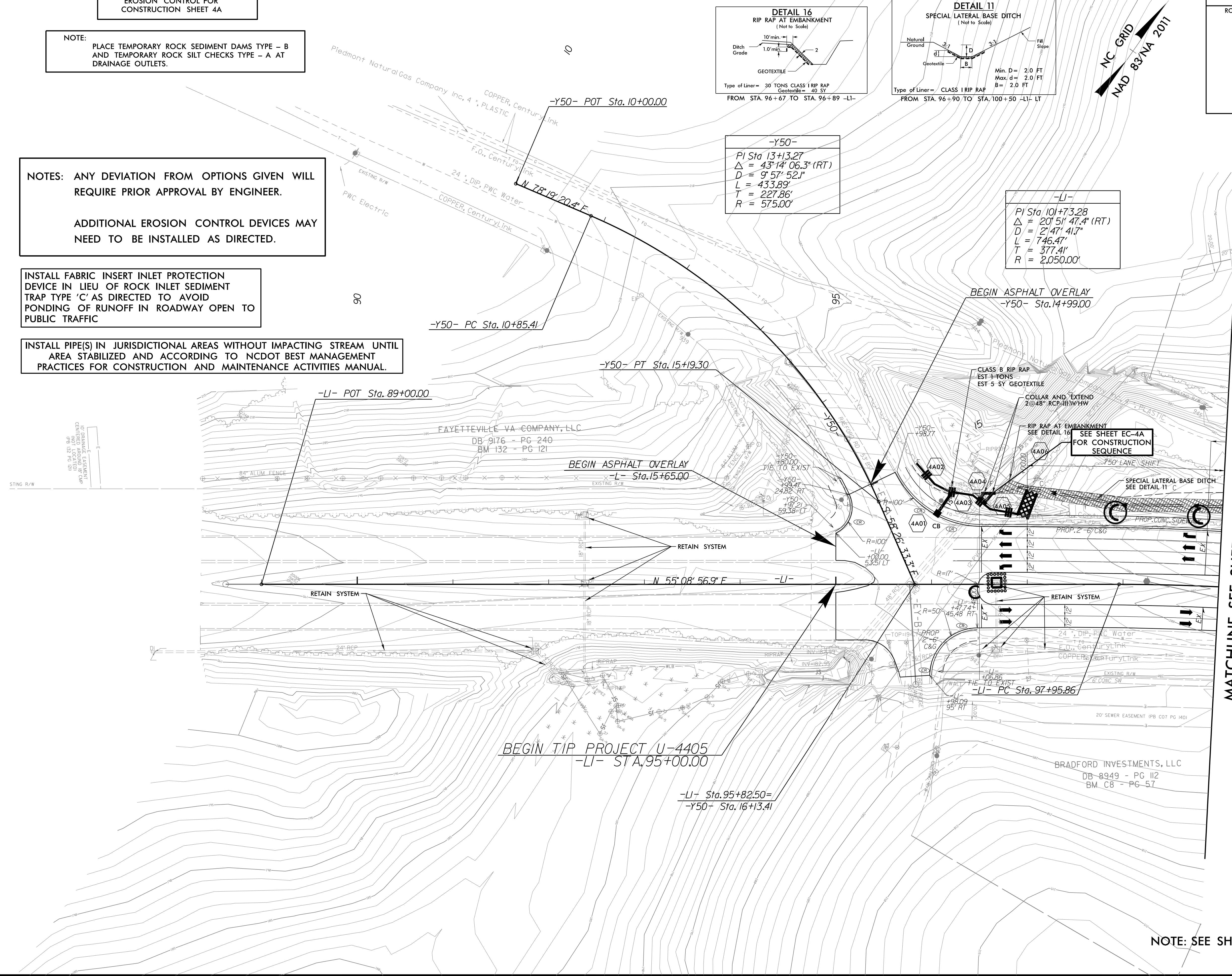
INSTALL FABRIC INSERT INLET PROTECTION  
DEVICE IN LIEU OF ROCK INLET SEDIMENT  
TRAP TYPE 'C' AS DIRECTED TO AVOID  
PONDING OF RUNOFF IN ROADWAY OPEN TO  
PUBLIC TRAFFIC

INSTALL PIPE(S) IN JURISDICTIONAL AREAS WITHOUT IMPACTING STREAM UNTIL  
AREA STABILIZED AND ACCORDING TO NCDOT BEST MANAGEMENT  
PRACTICES FOR CONSTRUCTION AND MAINTENANCE ACTIVITIES MANUAL.



-Y50-  
PI Sta 13+13.27  
 $\Delta = 43^{\circ}14'06.3''$  (RT)  
D = 9' 57" 52.1"  
L = 433.89'  
T = 227.86'  
R = 575.00'

-LI-  
PI Sta 101+73.28  
 $\Delta = 20^{\circ}51'47.4''$  (RT)  
D = 2' 47" 41.7"  
L = 746.47'  
T = 377.41'  
R = 2,050.00'



MATCHLINE SEE SHEET 4B  
-LI- STA 99+00

NOTE: SEE SHEET 52 FOR -LI- PROFILE

REVISIONS

8/17/99

7/6/2021  
U-4405\_REU\_EC\_psh\_04A.dgn