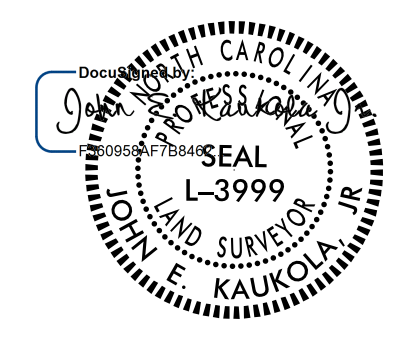
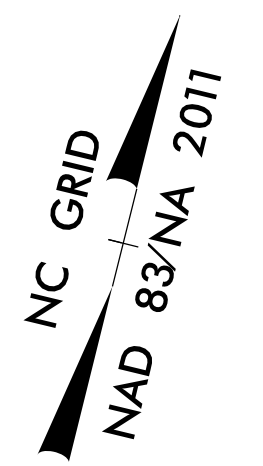
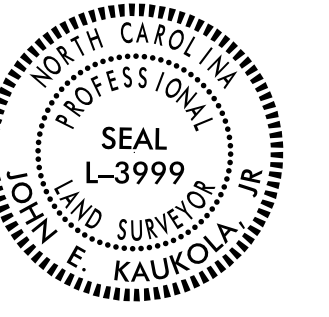


PROJECT REFERENCE NO.	SHEET NO.
U-4405A	RW6
<b>Location and Surveys</b>	
NCDOT DIVISION 6 LOCATION & SURVEYS 4834 US HWY 301 S HOPE MILLS, NC 28348	
PROJECT SURVEYOR	
	
DOCUMENT NOT CONSIDERED FINAL UNLESS ALL SIGNATURES COMPLETED	



I, John E. Kaukola, Jr., certify that the right of way and permanent easement monumentation for this project shown herein was completed under my direct and responsible charge from an actual survey made under my supervision; that all horizontal closures had a minimum ratio of precision of 1:10,000 (Class A). Field work was performed from 11/01/2016 to 08/01/2021, and all coordinates are based on NAD83/2011. That this survey was performed to meet the requirements of 21NCAC 56.1600 as applicable.

This 3rd day of August, 2021.  
 —Designed by:  
 John E. Kaukola, Jr.  
 Professional Land Surveyor L-3999

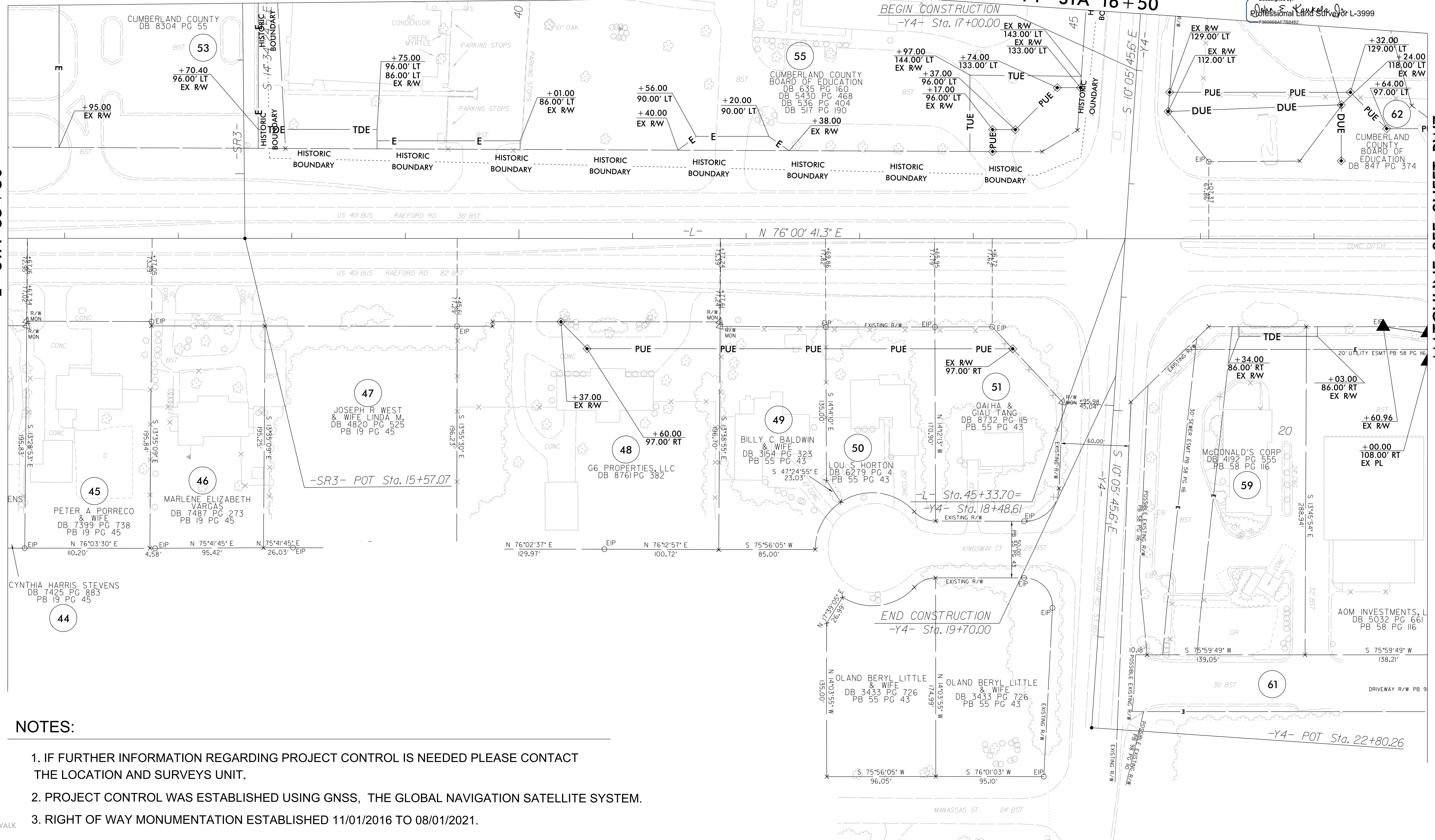


MATCHLINE SEE SHEET RW28  
-SR3- STA 13+50

MATCHLINE SEE SHEET RW28  
-Y4- STA 16+50

MATCHLINE SEE SHEET RW5  
-L- STA 35+50

MATCHLINE SEE SHEET RW7  
-L- STA 48+00



**NOTES:**

1. IF FURTHER INFORMATION REGARDING PROJECT CONTROL IS NEEDED PLEASE CONTACT THE LOCATION AND SURVEYS UNIT.
2. PROJECT CONTROL WAS ESTABLISHED USING GNSS, THE GLOBAL NAVIGATION SATELLITE SYSTEM.
3. RIGHT OF WAY MONUMENTATION ESTABLISHED 11/01/2016 TO 08/01/2021.



PROP CONC SIDEWALK

REVISIONS

C:\Users\j21412\Documents\Control Sheets\4405A\A-F\mnl\_210719\work\4405A-r.dwg\_psh\_06.dgn  
 AT: D:\06-312634  
 emblesmon