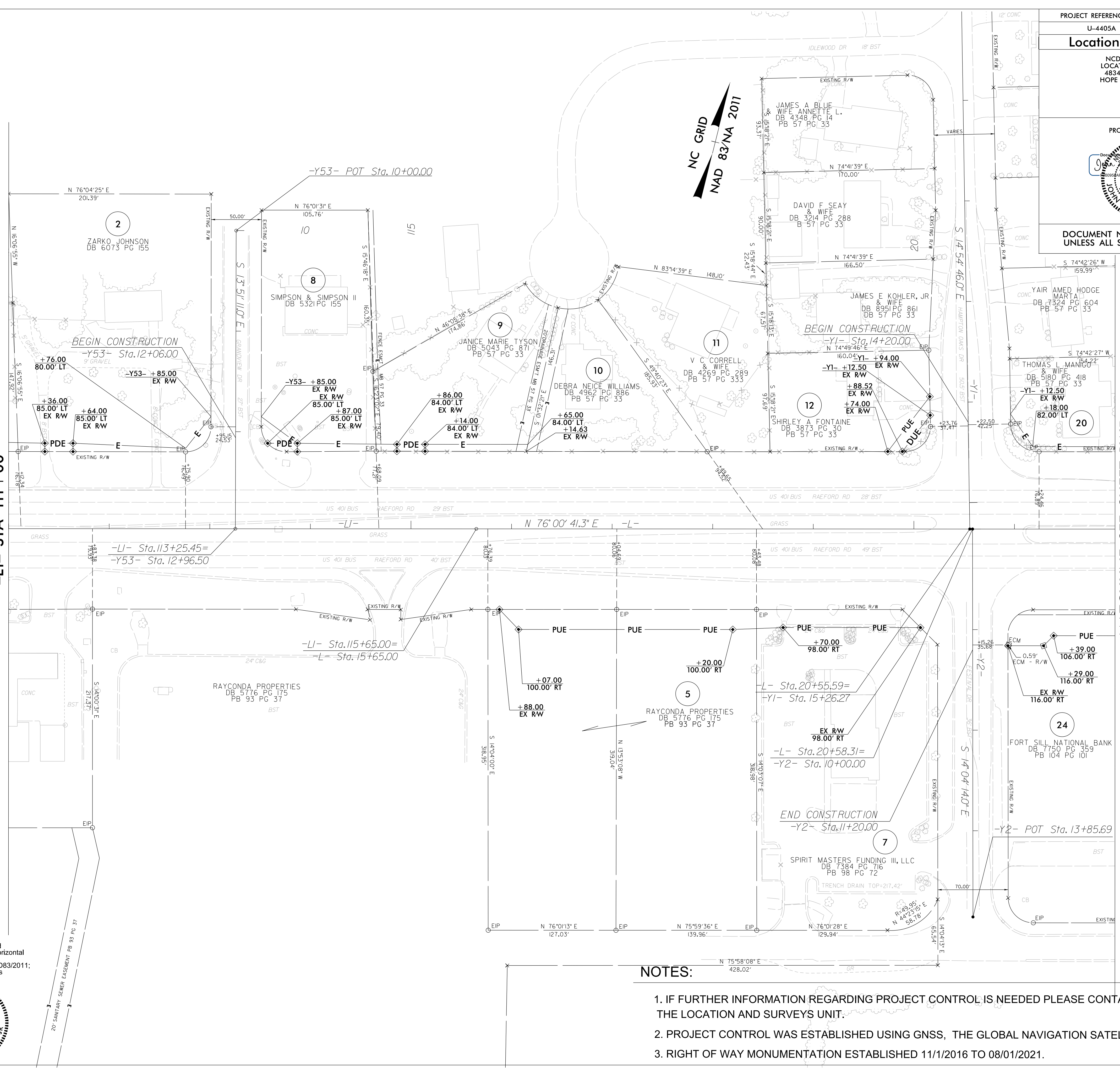


REVISIONS

MATCHLINE SEE SHEET RW4B
-L- STA 111 +00

MATCHLINE SEE SHEET RW5
-L- STA 22 +00



I, John E. Kaukola, Jr., certify that the right of way and permanent easement monumentation for this project shown herein was completed under my direct and responsible charge from an actual survey made under my supervision; that all horizontal closures had a minimum ratio of precision of 1:10,000 (Class A). Field work was performed from 11/01/2016 to 08/01/2021, and all coordinates are based on NAD83/2011; That this survey was performed to meet the requirements of 21NCAC 56.1600 as applicable.

This 3rd day of August, 2021.
 DocuSigned by:
John E. Kaukola, Jr.
 Professional Land Surveyor L-3999



NOTES:

- IF FURTHER INFORMATION REGARDING PROJECT CONTROL IS NEEDED PLEASE CONTACT THE LOCATION AND SURVEYS UNIT.
- PROJECT CONTROL WAS ESTABLISHED USING GNSS, THE GLOBAL NAVIGATION SATELLITE SYSTEM.
- RIGHT OF WAY MONUMENTATION ESTABLISHED 11/1/2016 TO 08/01/2021.

C:\Users\jcaukola\Documents\Projects\Control Sheets\U4405A\A-F\me1_210719\work\U4405A_r.dwg_psh_04.dgn
 08-AUG-2021 14:55
 101106-312634
 embloekmon