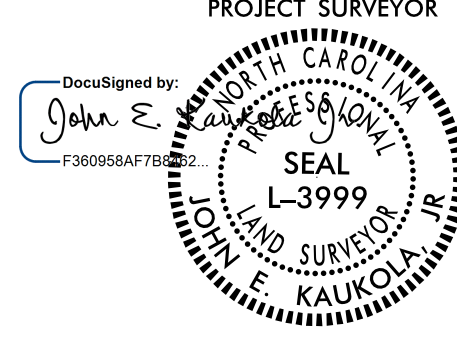
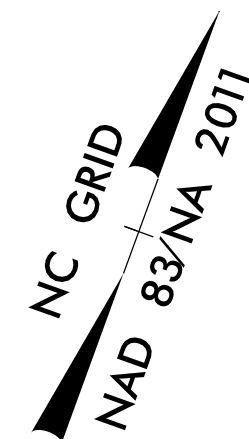


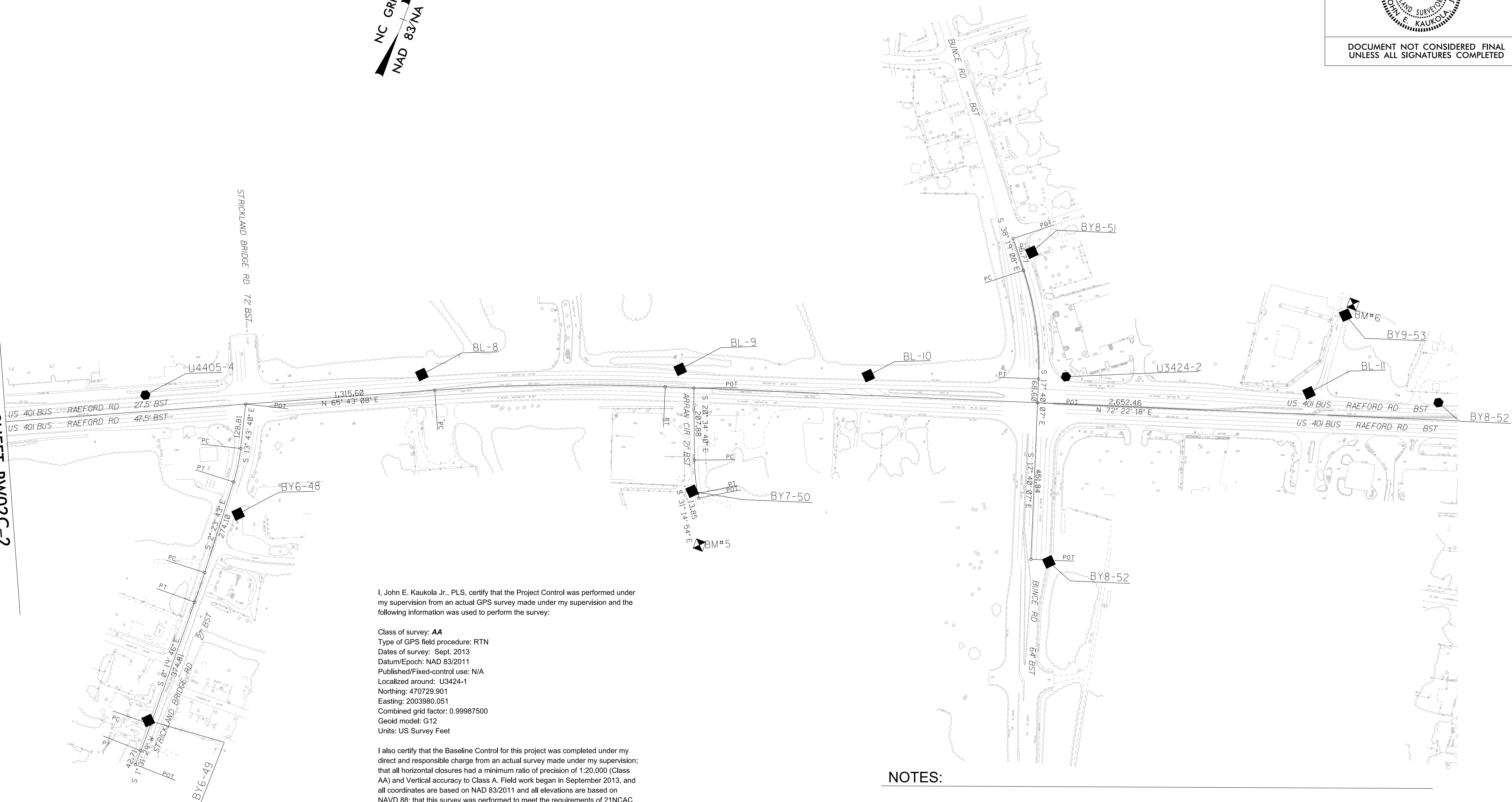
# SURVEY CONTROL SHEET

## W/ EXISTING CENTERLINE ALIGNMENTS PRIOR TO CONSTRUCTION

PROJECT REFERENCE NO. U-4405A	SHEET NO. RW02C-3
<b>Location and Surveys</b>	
NCDOT DIVISION 6 LOCATION AND SURVEYS 4834 US HWY 301 S HOPE MILLS, NC 28348	
PROJECT SURVEYOR 	
DOCUMENT NOT CONSIDERED FINAL UNLESS ALL SIGNATURES COMPLETED	



MATCH LINE SHEET RW02C-2

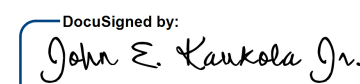


I, John E. Kaukola Jr., PLS, certify that the Project Control was performed under my supervision from an actual GPS survey made under my supervision and the following information was used to perform the survey:

Class of survey: **AA**  
 Type of GPS field procedure: RTN  
 Dates of survey: Sept. 2013  
 Datum/Epoch: NAD 83/2011  
 Published/Fixed-control use: N/A  
 Localized around: U3424-1  
 Northing: 470729.901  
 Easting: 2003980.051  
 Combined grid factor: 0.99987500  
 Geoid model: G12  
 Units: US Survey Feet

I also certify that the Baseline Control for this project was completed under my direct and responsible charge from an actual survey made under my supervision; that all horizontal closures had a minimum ratio of precision of 1:20,000 (Class AA) and Vertical accuracy to Class A. Field work began in September 2013, and all coordinates are based on NAD 83/2011 and all elevations are based on NAVD 88; that this survey was performed to meet the requirements of 21NCAC 56.1600 as applicable.

This 3rd day of August, 2021.

DocuSigned by:  
  
 Professional Land Surveyor L-3999



### NOTES:

1. PROJECT CONTROL WAS ESTABLISHED USING GNSS, THE GLOBAL NAVIGATION SATELLITE SYSTEM.
2. THE SURVEY CONTROL DATA FOR THIS PROJECT HAS BEEN COMPILED FROM VARIOUS SOURCES. IF FURTHER INFORMATION REGARDING PROJECT CONTROL IS NEEDED, PLEASE CONTACT THE LOCATION AND SURVEYS UNIT.

REVISIONS