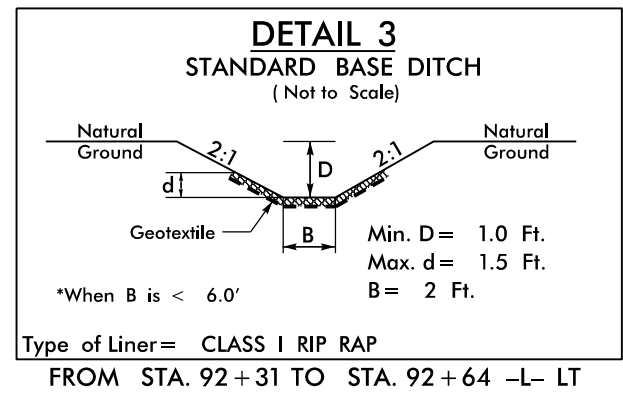


PROJECT REFERENCE NO. U-4405A	SHEET NO. 10
RW SHEET NO. U-4405 PSH 10	HYDRAULICS ENGINEER
ROADWAY DESIGN ENGINEER	PROFESSIONAL SEAL 20147
SEAL 024929	PROFESSIONAL SEAL 20147
DOCUMENT NOT CONSIDERED FINAL UNLESS ALL SIGNATURES COMPLETED	

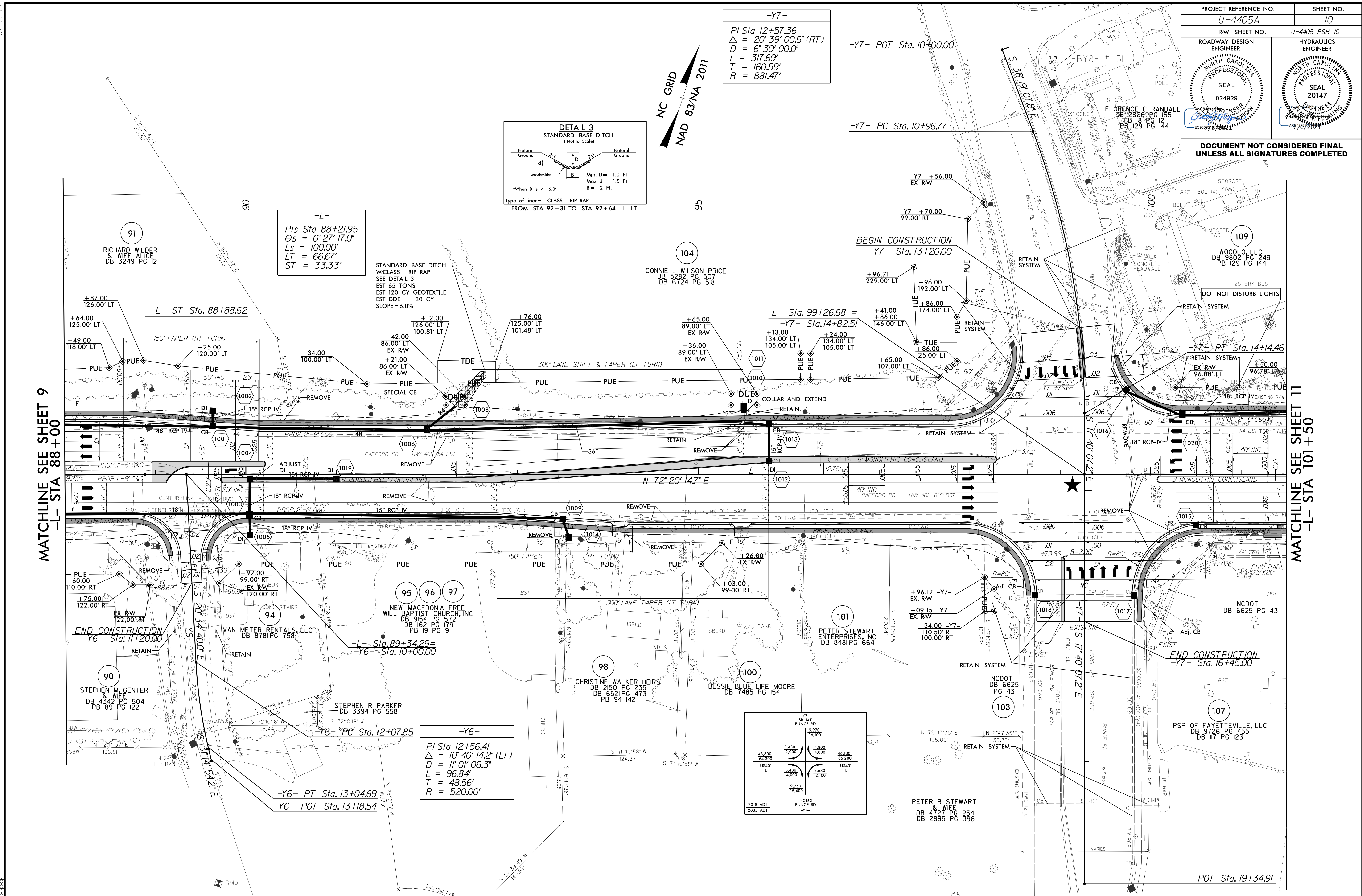
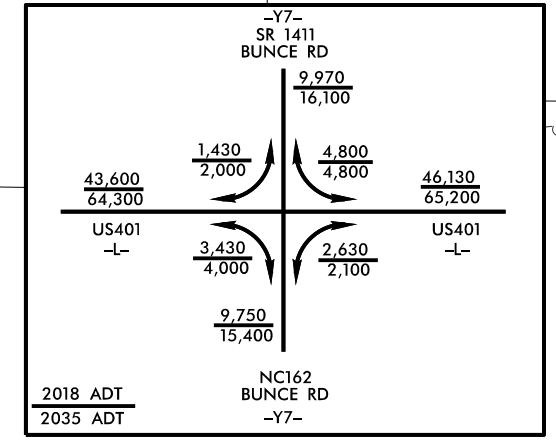
-Y7-  
 PI Sta 12+57.36  
 $\Delta = 20' 39' 00.6" (RT)$   
 $D = 6' 30' 00.0"$   
 $L = 317.69'$   
 $T = 160.59'$   
 $R = 881.47'$



-L-  
 PIs Sta 88+21.95  
 $\Theta_s = 0' 27' 17.0"$   
 $L_s = 100.00'$   
 $LT = 66.67'$   
 $ST = 33.33'$

STANDARD BASE DITCH  
 W/CLASS 1 RIP RAP  
 SEE DETAIL 3  
 EST 65 TONS  
 EST 120 CY GEOTEXTILE  
 EST DDE = 30 CY  
 SLOPE=6.0%

-Y6-  
 PI Sta 12+56.41  
 $\Delta = 10' 40' 14.2" (LT)$   
 $D = 11' 01' 06.3"$   
 $L = 96.84'$   
 $T = 48.56'$   
 $R = 520.00'$



★ PROPOSED SIGNAL  
 █ PROP CONC SIDEWALK

NOTE: BUS PADS WILL BE PAID FOR AS SIDEWALK  
 SEE SHEET 35 & 36 FOR -L- PROFILE  
 SEE SHEET 38 FOR -Y6- PROFILE  
 SEE SHEET 38 FOR -Y7- PROFILE  
 SEE SHEET 2B-1 FOR INTERSECTION DETAILS

8/17/99  
 09-UN-202119-37  
 R:\Roadwork\4405A\rdy\_psh\_10.dgn  
 \$\$\$\$\$\$DATE\$\$\$\$\$\$