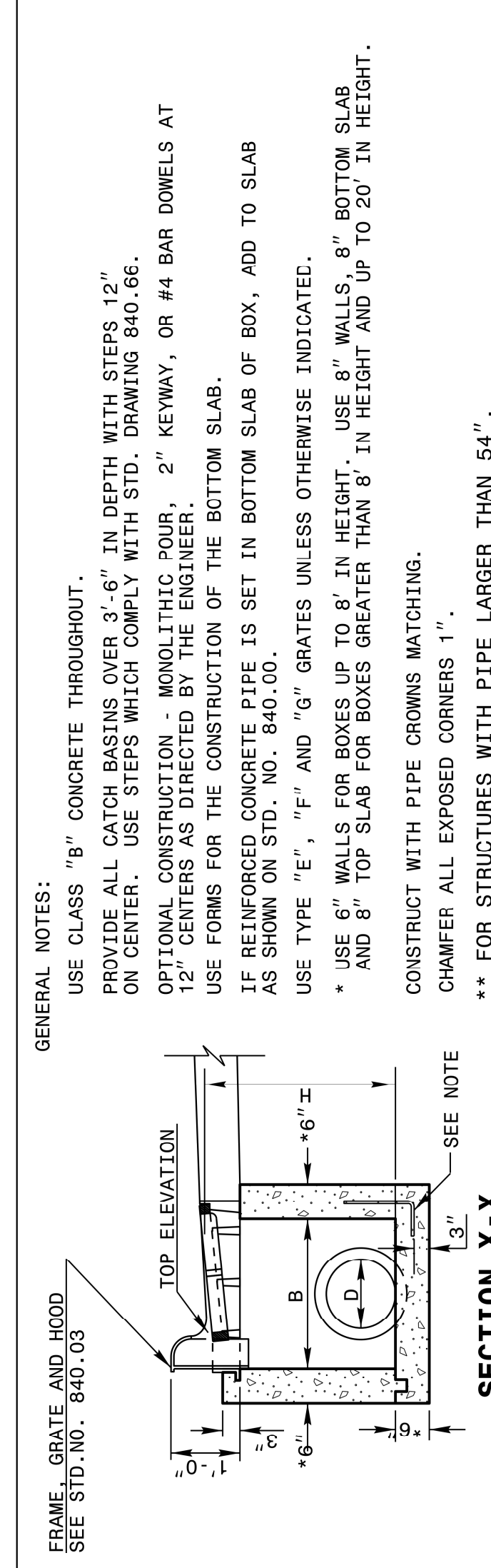
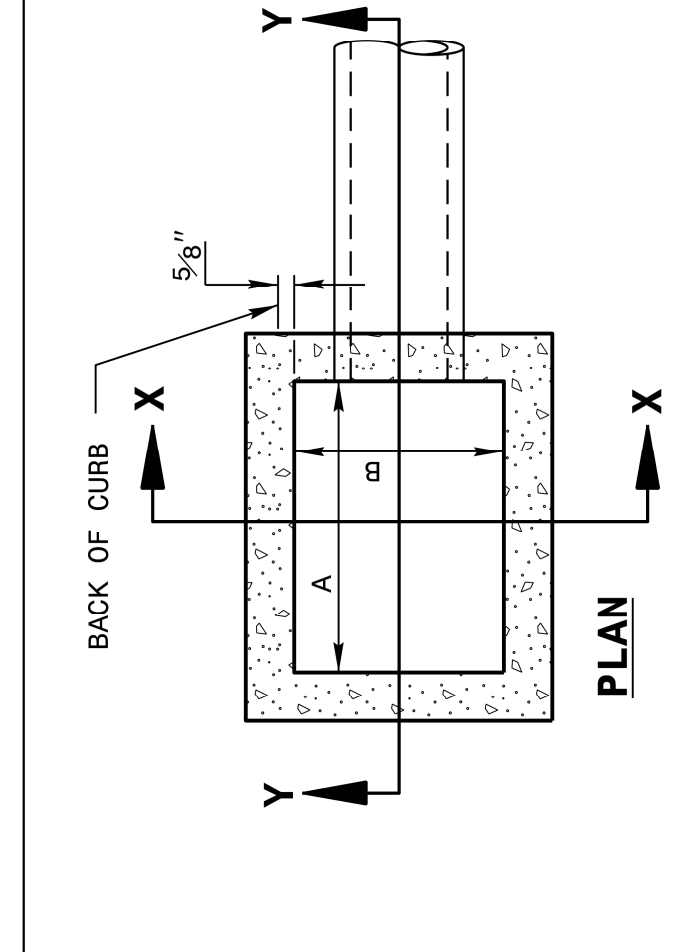


16-APR-2018 11:44  
 S:\Contracts\Special Details\jhowerton\840d02 Extra Depth CB.dgn  
 jhowerton AT CSD-292595

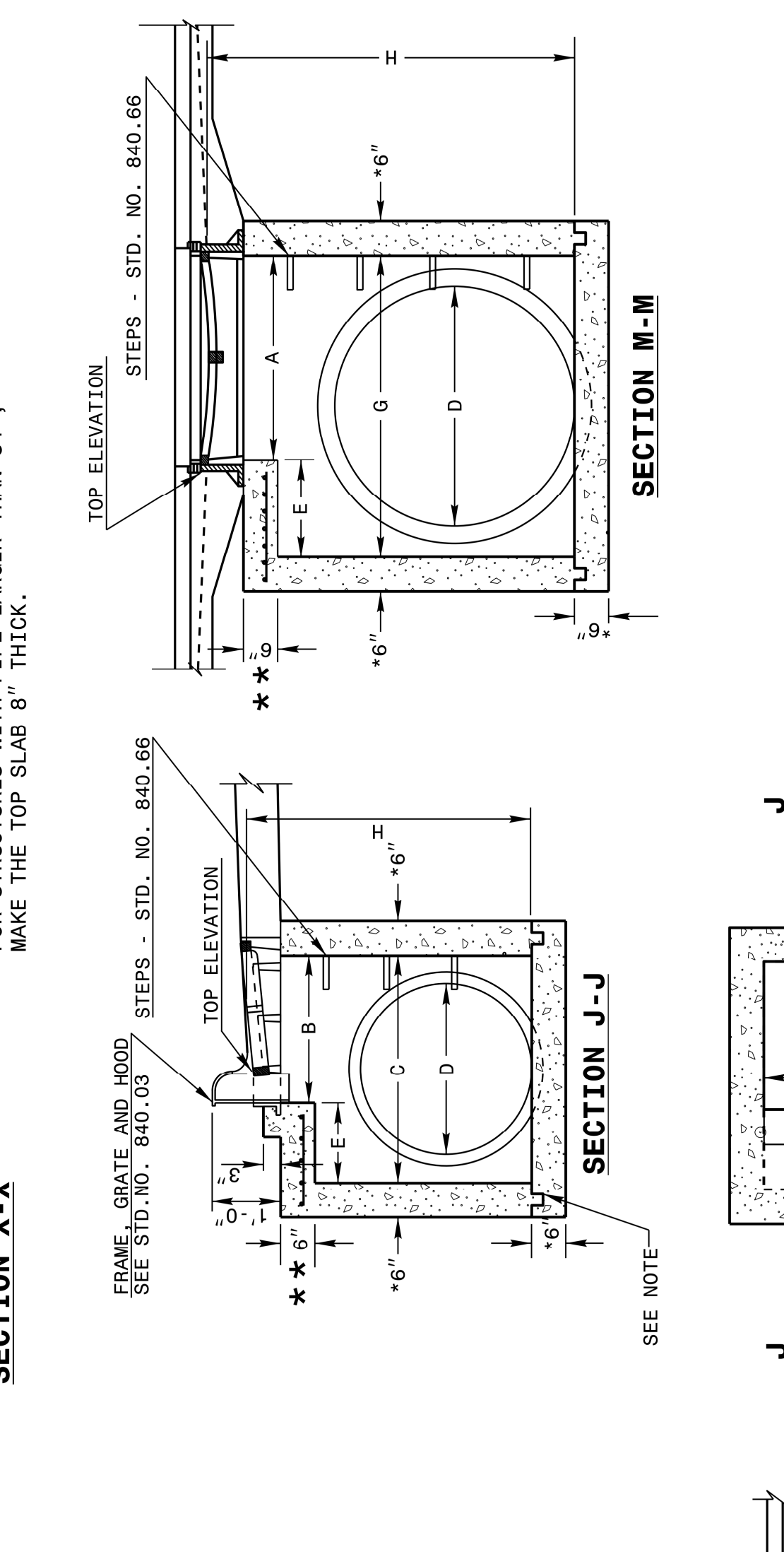
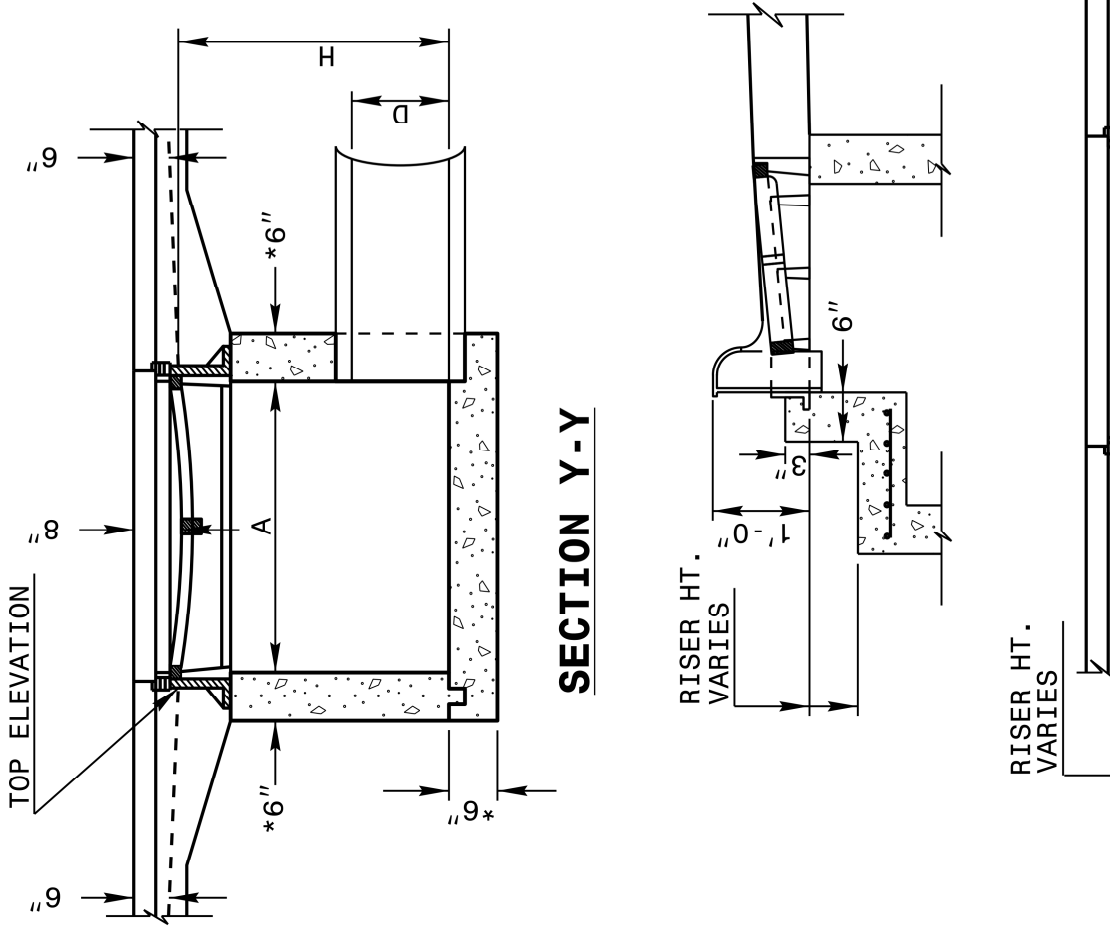
5/14/99

STATE OF NORTH CAROLINA  
 DEPT. OF TRANSPORTATION  
 DIVISION OF HIGHWAYS  
 RALEIGH, N.C.



STATE OF NORTH CAROLINA  
 DEPT. OF TRANSPORTATION  
 DIVISION OF HIGHWAYS  
 RALEIGH, N.C.

ENGLISH DETAIL DRAWING FOR  
**EXTRA DEPTH  
 CONCRETE CATCH BASIN**  
 12" THRU 84" PIPE

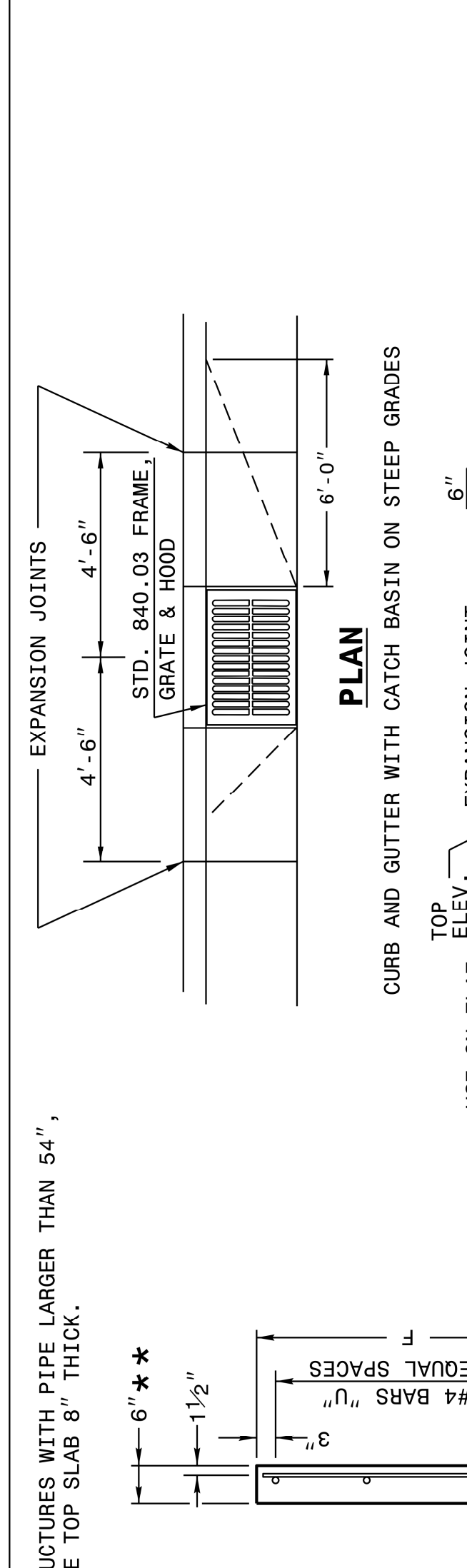
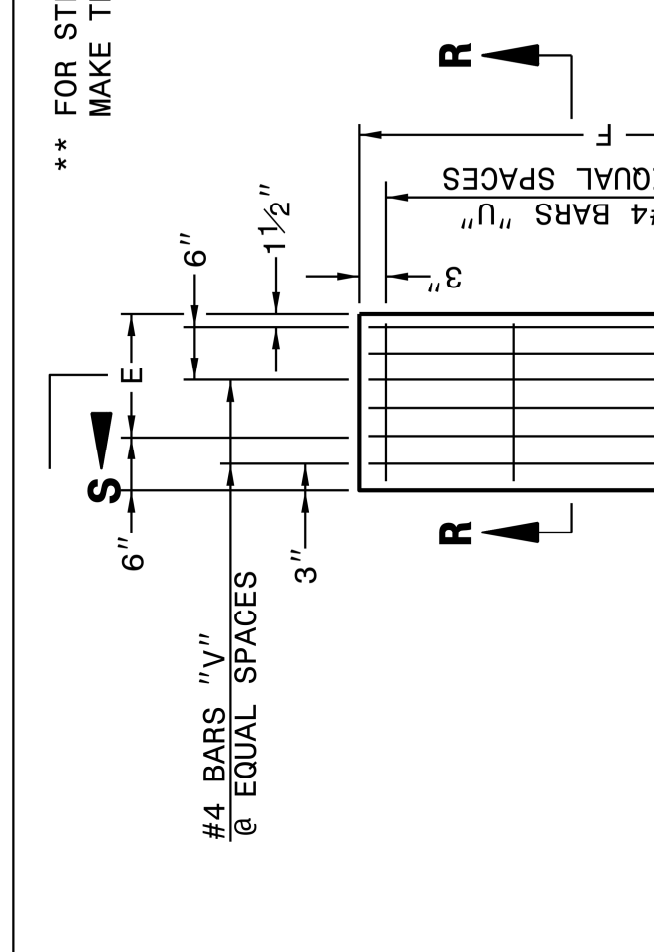


ENGLISH DETAIL DRAWING FOR  
**EXTRA DEPTH  
 CONCRETE CATCH BASIN**  
 12" THRU 84" PIPE

SHEET 1 OF 2  
**840D02**

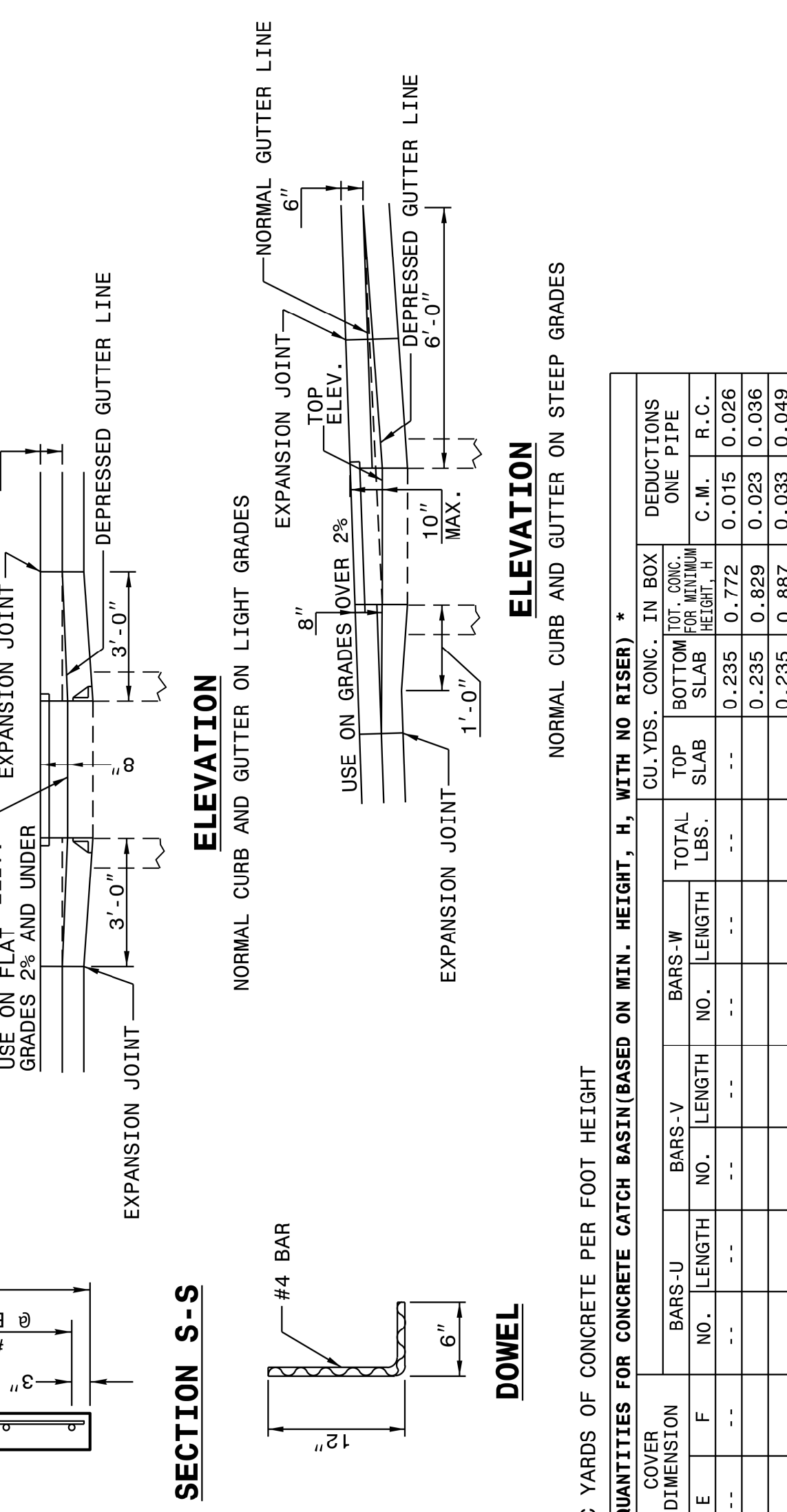
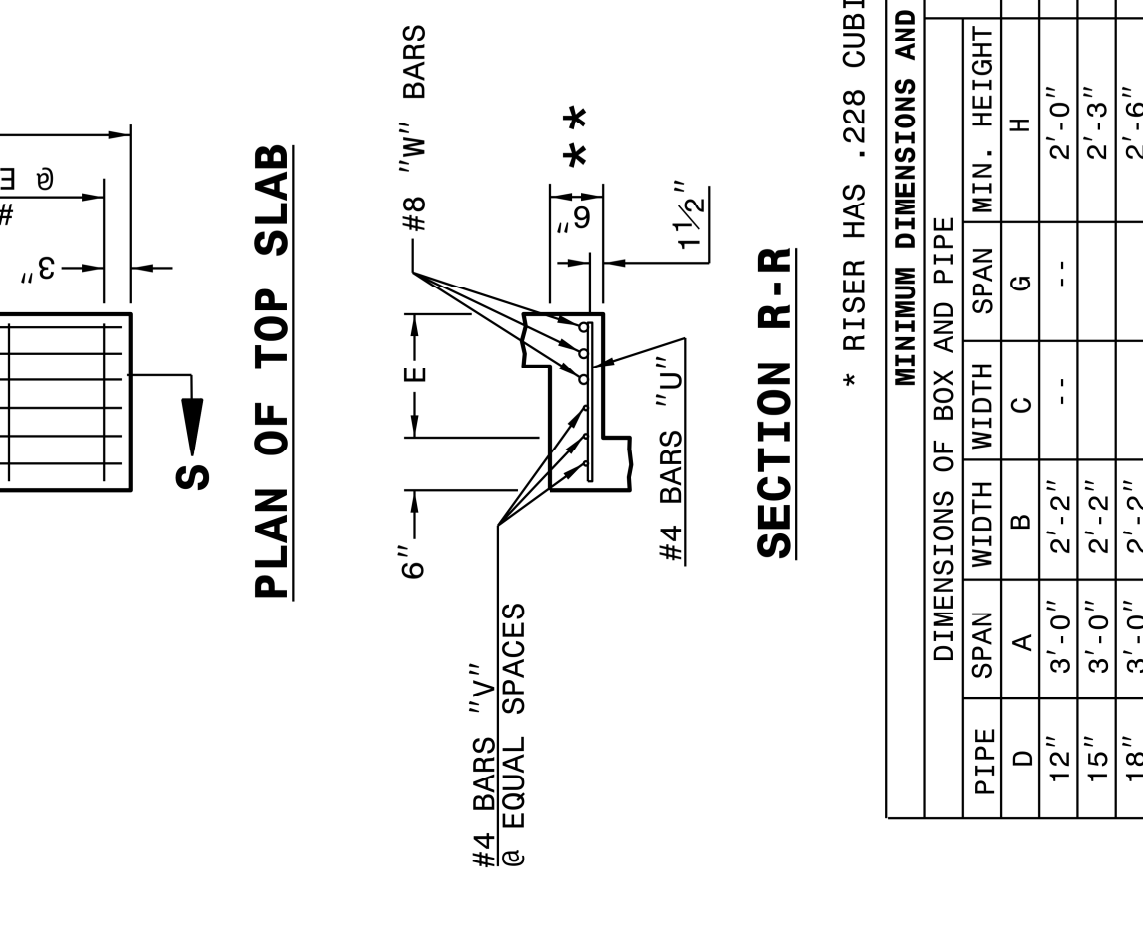
SHEET 1 OF 2  
**840D02**

STATE OF NORTH CAROLINA  
 DEPT. OF TRANSPORTATION  
 DIVISION OF HIGHWAYS  
 RALEIGH, N.C.



STATE OF NORTH CAROLINA  
 DEPT. OF TRANSPORTATION  
 DIVISION OF HIGHWAYS  
 RALEIGH, N.C.

ENGLISH DETAIL DRAWING FOR  
**EXTRA DEPTH  
 CONCRETE CATCH BASIN**  
 12" THRU 84" PIPE



ENGLISH DETAIL DRAWING FOR  
**EXTRA DEPTH  
 CONCRETE CATCH BASIN**  
 12" THRU 84" PIPE

SHEET 2 OF 2  
**840D02**

SHEET 2 OF 2  
**840D02**

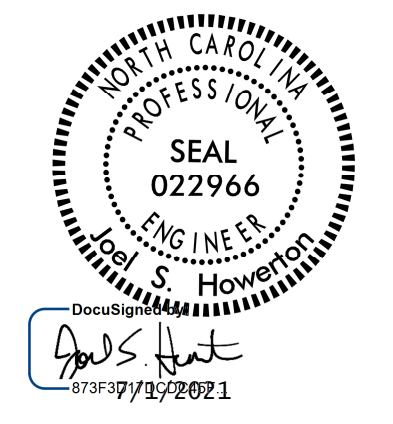
\* RISER HAS .228 CUBIC YARDS OF CONCRETE PER FOOT HEIGHT

PIPE D.	MINIMUM DIMENSIONS OF BOX AND PIPE		COVER DIMENSION		BARS-U		BARS-V		BARS-W		TOTAL LBS.		DEDUCTIONS		
	SPAN	WIDTH	MIN.	HEIGHT	NO.	LENGTH	NO.	LENGTH	NO.	LENGTH	CU. YDS.	CONC. IN BOX	TOP SLAB	CONC. FOR MINIMUM HEIGHT, H	ONE PIPE
12"	3'-0"	2'-2"	2'-0"	2'-3"	..	..	..	..	..	..	..	0.235	0.772	0.015	0.026
15"	3'-0"	2'-2"	2'-0"	2'-3"	..	..	..	..	..	..	..	0.235	0.829	0.023	0.036
18"	3'-0"	2'-2"	2'-0"	2'-3"	..	..	..	..	..	..	..	0.235	0.887	0.033	0.049
24"	3'-0"	2'-2"	2'-0"	2'-3"	..	..	..	..	..	..	..	0.235	1.001	0.059	0.085
30"	3'-0"	2'-2"	2'-0"	2'-3"	..	..	..	..	..	..	..	0.235	1.114	0.092	0.127
36"	3'-0"	2'-2"	2'-0"	2'-3"	..	..	..	..	..	..	..	0.235	1.228	0.132	0.178
42"	3'-0"	2'-2"	2'-0"	2'-3"	..	..	..	..	..	..	..	0.235	1.342	0.174	0.243
48"	3'-0"	2'-2"	2'-0"	2'-3"	..	..	..	..	..	..	..	0.235	1.456	0.216	0.317
54"	3'-0"	2'-2"	2'-0"	2'-3"	..	..	..	..	..	..	..	0.235	1.570	0.258	0.401
60"	3'-0"	2'-2"	2'-0"	2'-3"	..	..	..	..	..	..	..	0.235	1.684	0.300	0.485
66"	3'-0"	2'-2"	2'-0"	2'-3"	..	..	..	..	..	..	..	0.235	1.798	0.342	0.569
72"	3'-0"	2'-2"	2'-0"	2'-3"	..	..	..	..	..	..	..	0.235	1.912	0.384	0.653
78"	3'-0"	2'-2"	2'-0"	2'-3"	..	..	..	..	..	..	..	0.235	2.026	0.426	0.737
84"	3'-0"	2'-2"	2'-0"	2'-3"	..	..	..	..	..	..	..	0.235	2.140	0.468	0.821

CONTRACT STANDARDS AND DEVELOPMENT UNIT  
 Office 919-707-6950 FAX 919-250-4119

**SEE PLATE FOR TITLE**

ORIGINAL BY: 2002 Std.840.01 DATE: \_\_\_\_\_  
 MODIFIED BY: E.E. WARD DATE: 3-1-02  
 CHECKED BY: \_\_\_\_\_ DATE: \_\_\_\_\_  
 FILE SPEC.: jhowerton/840d02 Extra Depth CB.dgn



DOCUMENT NOT CONSIDERED FINAL  
 UNLESS ALL SIGNATURES COMPLETED