

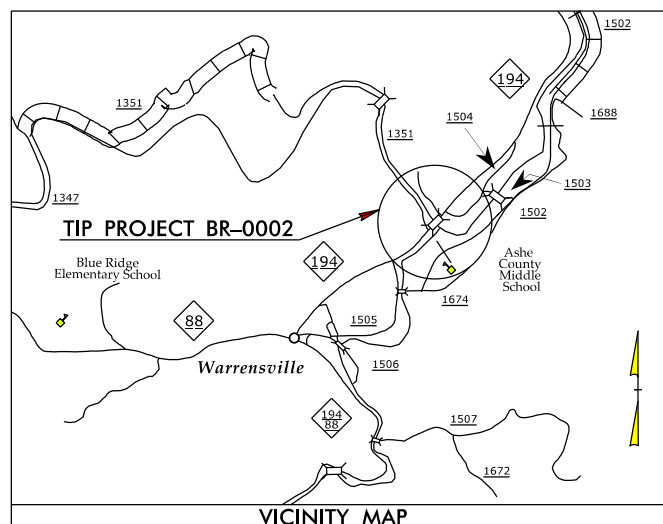
09/28/99

TIP PROJECT: BR-0002

C204482

3:05:09 PM R:\Utility\Res\16-49.04 BR-0002 Ashe\Coordination\Utility\_Relocations\Plans\BR0002.Rdy - tsh\_legend.dgn dennis.paige

See Sheet 1B For Conventional Symbols



STATE OF NORTH CAROLINA  
DIVISION OF HIGHWAYS

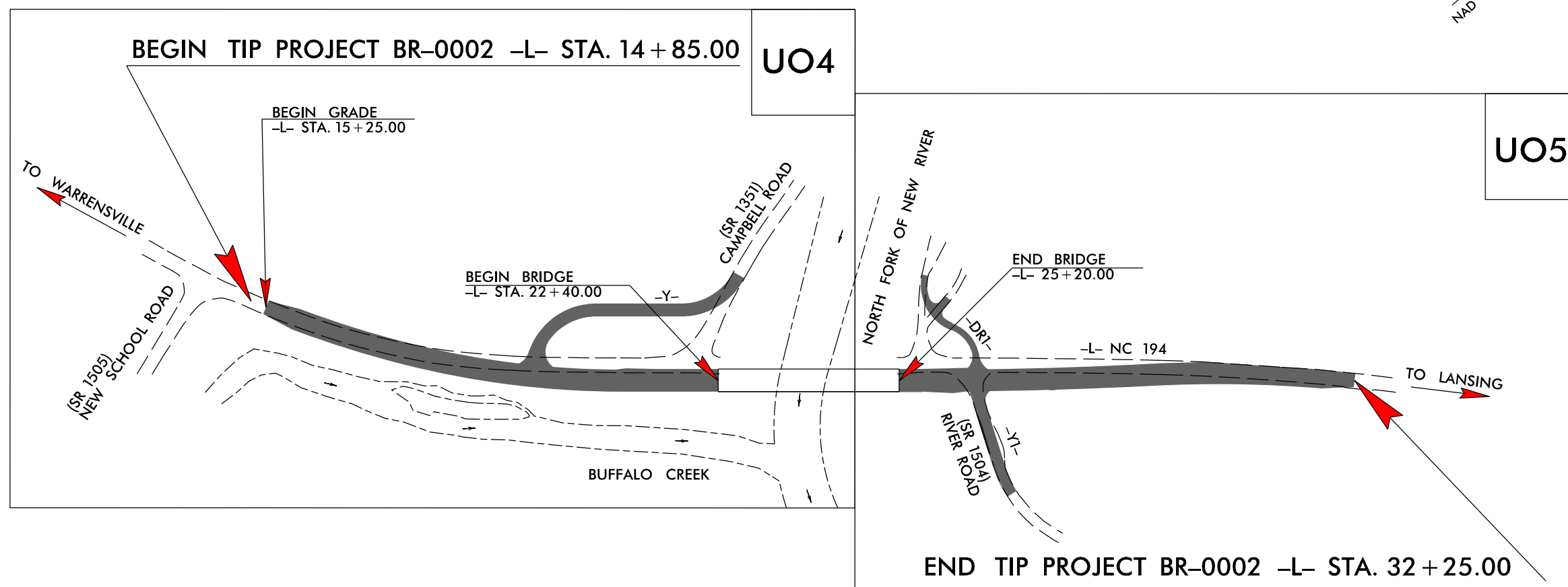
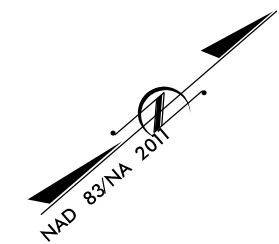
**UTILITIES BY OTHERS PLANS  
ASHE COUNTY**

LOCATION: BRIDGE NO. 040008 ON NC 194 OVER  
NORTH FORK NEW RIVER

TYPE OF WORK: UTILITY RELOCATION

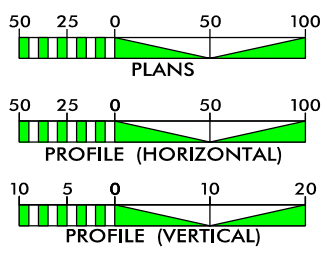
T.I.P. NO.	SHEET NO.
BR-0002	UO-1

NOTE:  
ALL UTILITY WORK SHOWN ON THIS SHEET WILL BE DONE BY OTHERS. NO PAYMENT WILL BE MADE TO THE CONTRACTOR FOR UTILITY WORK SHOWN ON THIS SHEET.



**PRELIMINARY PLANS**  
DO NOT USE FOR CONSTRUCTION

**GRAPHIC SCALES**



**INDEX OF SHEETS**

SHEET NO.:	DESCRIPTION:
UO-1	TITLE SHEET
UO-1B	STANDARD LEGEND SHEET
UO-4 THRU UO-5	UBO PLAN SHEETS

**UTILITY OWNERS WITH CONFLICTS**

- (A) Power Transmission - Blue Ridge EMC
- (B) Power Distribution - Blue Ridge EMC
- (C) Communications - Morris Broadband, LLC
- (D) Communications - SkyLine/SkyBest

PREPARED IN THE OFFICE OF:

**ICE of CAROLINAS, PLLC**  
4505 Falls of Neuse Road, Suite 110  
Raleigh, NC 27609  
NC License No. P-0999

GUS KRETSCHMER	UTILITY PROJECT MANAGER
TERESA McCLUNG	PROJECT UTILITY COORDINATOR
	PROJECT UTILITY

**DIVISION OF HIGHWAYS  
UTILITIES UNIT**  
1555 MAIL SERVICES CENTER  
RALEIGH, NC 27699-1555  
PHONE (919) 707-6690  
FAX (919) 250-4151

MICHAEL BRIGHT	UTILITIES REGIONAL ENGINEER
DONALD HAMPTON	UTILITIES ENGINEER
AMY YORK	UTILITIES AREA COORDINATOR
STEVE TREXLER	UTILITIES COORDINATOR

# STATE OF NORTH CAROLINA, DIVISION OF HIGHWAYS CONVENTIONAL PLAN SHEET SYMBOLS

## BOUNDARIES AND PROPERTY:

State Line	-----
County Line	-----
Township Line	-----
City Line	-----
Reservation Line	-----
Property Line	-----
Existing Iron Pin	○ EP
Computed Property Corner	✕
Property Monument	◻ EGM
Parcel/Sequence Number	①23
Existing Fence Line	-x-x-x-
Proposed Woven Wire Fence	○
Proposed Chain Link Fence	◻
Proposed Barbed Wire Fence	◇
Existing Wetland Boundary	----- WLB
Proposed Wetland Boundary	----- WLB
Existing Endangered Animal Boundary	----- EAB
Existing Endangered Plant Boundary	----- EPB
Existing Historic Property Boundary	----- HPB
Known Contamination Area: Soil	☠-S-☠
Potential Contamination Area: Soil	☠-S-☠
Known Contamination Area: Water	☠-W-☠
Potential Contamination Area: Water	☠-W-☠
Contaminated Site: Known or Potential	☠ ?

## BUILDINGS AND OTHER CULTURE:

Gas Pump Vent or U/G Tank Cap	○
Sign	○ S
Well	○ W
Small Mine	✕
Foundation	◻
Area Outline	◻
Cemetery	⊕
Building	◻
School	◻
Church	⊕
Dam	⌵

## HYDROLOGY:

Stream or Body of Water	-----
Hydro, Pool or Reservoir	-----
Jurisdictional Stream	----- JS
Buffer Zone 1	----- BZ 1
Buffer Zone 2	----- BZ 2
Flow Arrow	←
Disappearing Stream	→
Spring	○
Wetland	-----
Proposed Lateral, Tail, Head Ditch	----- FLD
False Sump	◻

## RAILROADS:

Standard Gauge	----- CSX TRANSPORTATION
RR Signal Milepost	○ MILEPOST 35
Switch	◻ SWITCH
RR Abandoned	-----
RR Dismantled	-----

Note: Not to Scale

\*S.U.E. = Subsurface Utility Engineering

## RIGHT OF WAY & PROJECT CONTROL:

Secondary Horiz and Vert Control Point	◆
Primary Horiz Control Point	◻
Primary Horiz and Vert Control Point	◆
Exist Permanent Easement Pin and Cap	◇
New Permanent Easement Pin and Cap	◇
Vertical Benchmark	⊕
Existing Right of Way Marker	△
Existing Right of Way Line	-----
New Right of Way Line	○ RW
New Right of Way Line with Pin and Cap	○ RW ▲
New Right of Way Line with Concrete or Granite R/W Marker	▲ RW
New Control of Access Line with Concrete C/A Marker	△ CA
Existing Control of Access	△ CA
New Control of Access	△ CA
Existing Easement Line	----- E
New Temporary Construction Easement	----- E
New Temporary Drainage Easement	----- TDE
New Permanent Drainage Easement	----- PDE
New Permanent Drainage / Utility Easement	----- DUE
New Permanent Utility Easement	----- PUE
New Temporary Utility Easement	----- TUE
New Aerial Utility Easement	----- AUE

## ROADS AND RELATED FEATURES:

Existing Edge of Pavement	-----
Existing Curb	-----
Proposed Slope Stakes Cut	----- C
Proposed Slope Stakes Fill	----- F
Proposed Curb Ramp	----- CR
Existing Metal Guardrail	-----
Proposed Guardrail	-----
Existing Cable Guiderail	-----
Proposed Cable Guiderail	-----
Equality Symbol	⊕
Pavement Removal	⊗

## VEGETATION:

Single Tree	☼
Single Shrub	☼

Hedge	-----
Woods Line	-----
Orchard	☼ ☼ ☼ ☼
Vineyard	◻ Vineyard

## EXISTING STRUCTURES:

MAJOR:	
Bridge, Tunnel or Box Culvert	CONC
Bridge Wing Wall, Head Wall and End Wall	CONC WW
MINOR:	
Head and End Wall	CONC HW
Pipe Culvert	-----
Footbridge	-----
Drainage Box: Catch Basin, DI or JB	◻ CB
Paved Ditch Gutter	-----
Storm Sewer Manhole	⊕
Storm Sewer	----- S

## UTILITIES:

POWER:	
Existing Power Pole	●
Proposed Power Pole	○
Existing Joint Use Pole	●
Proposed Joint Use Pole	○
Power Manhole	⊕
Power Line Tower	⊗
Power Transformer	⊗
U/G Power Cable Hand Hole	-----
H-Frame Pole	●
U/G Power Line LOS B (S.U.E.*)	----- P
U/G Power Line LOS C (S.U.E.*)	----- P
U/G Power Line LOS D (S.U.E.*)	----- P

## TELEPHONE:

Existing Telephone Pole	●
Proposed Telephone Pole	○
Telephone Manhole	⊕
Telephone Pedestal	⊕
Telephone Cell Tower	⊕
U/G Telephone Cable Hand Hole	-----
U/G Telephone Cable LOS B (S.U.E.*)	----- T
U/G Telephone Cable LOS C (S.U.E.*)	----- T
U/G Telephone Cable LOS D (S.U.E.*)	----- T
U/G Telephone Conduit LOS B (S.U.E.*)	----- TC
U/G Telephone Conduit LOS C (S.U.E.*)	----- TC
U/G Telephone Conduit LOS D (S.U.E.*)	----- TC
U/G Fiber Optics Cable LOS B (S.U.E.*)	----- T FO
U/G Fiber Optics Cable LOS C (S.U.E.*)	----- T FO
U/G Fiber Optics Cable LOS D (S.U.E.*)	----- T FO

## WATER:

Water Manhole	⊕
Water Meter	○
Water Valve	⊗
Water Hydrant	⊕
U/G Water Line LOS B (S.U.E.*)	-----
U/G Water Line LOS C (S.U.E.*)	-----
U/G Water Line LOS D (S.U.E.*)	-----
Above Ground Water Line	----- A/G Water

## TV:

TV Pedestal	⊕
TV Tower	⊗
U/G TV Cable Hand Hole	-----
U/G TV Cable LOS B (S.U.E.*)	----- TV
U/G TV Cable LOS C (S.U.E.*)	----- TV
U/G TV Cable LOS D (S.U.E.*)	----- TV
U/G Fiber Optic Cable LOS B (S.U.E.*)	----- TV FO
U/G Fiber Optic Cable LOS C (S.U.E.*)	----- TV FO
U/G Fiber Optic Cable LOS D (S.U.E.*)	----- TV FO

## GAS:

Gas Valve	◇
Gas Meter	⊕
U/G Gas Line LOS B (S.U.E.*)	----- G
U/G Gas Line LOS C (S.U.E.*)	----- G
U/G Gas Line LOS D (S.U.E.*)	----- G
Above Ground Gas Line	----- A/G Gas

## SANITARY SEWER:

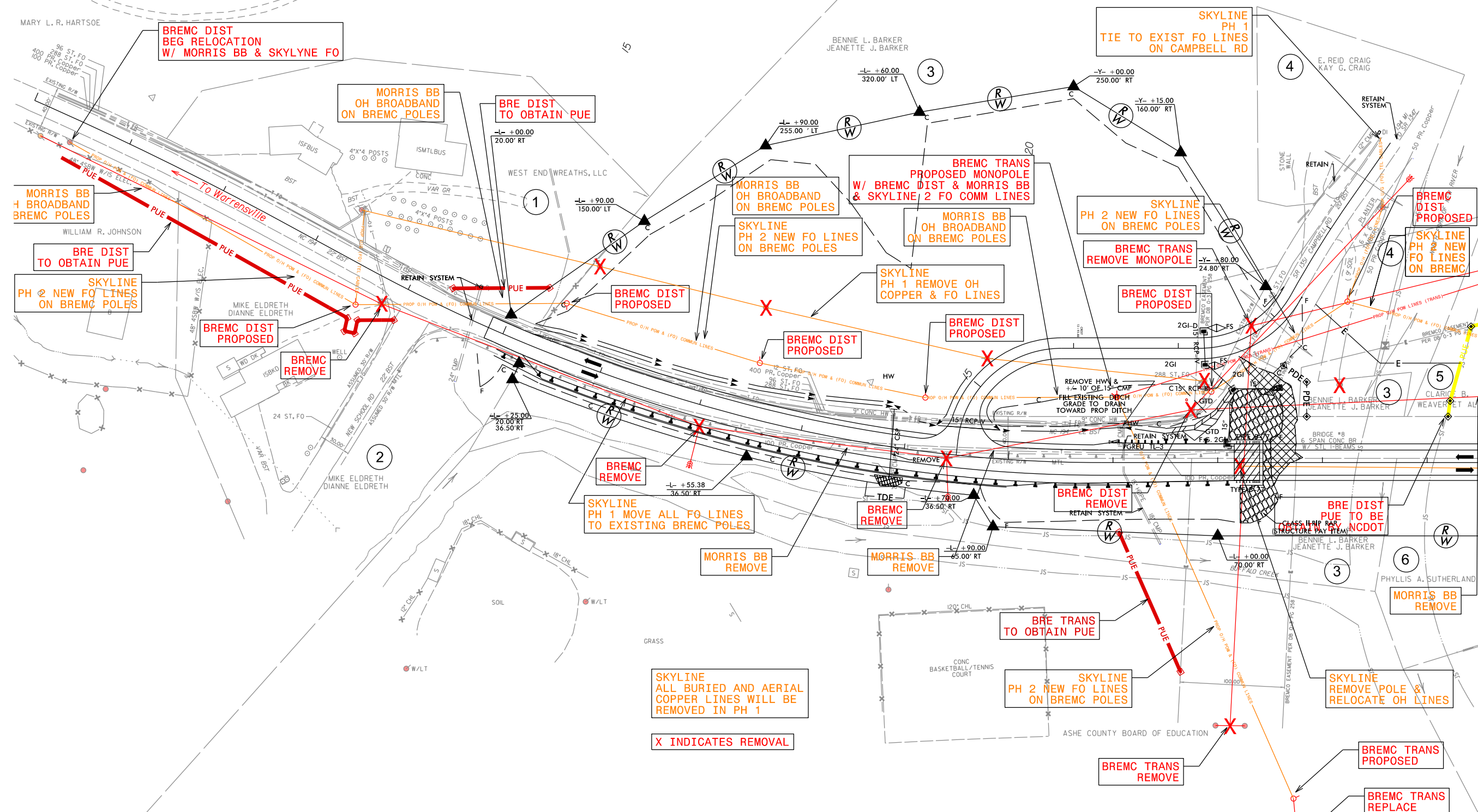
Sanitary Sewer Manhole	⊕
Sanitary Sewer Cleanout	⊕
U/G Sanitary Sewer Line	----- SS
Above Ground Sanitary Sewer	----- A/G Sanitary Sewer
SS Forced Main Line LOS B (S.U.E.*)	----- FSS
SS Forced Main Line LOS C (S.U.E.*)	----- FSS
SS Forced Main Line LOS D (S.U.E.*)	----- FSS

## MISCELLANEOUS:

Utility Pole	●
Utility Pole with Base	⊕
Utility Located Object	○
Utility Traffic Signal Box	⊕
Utility Unknown U/G Line LOS B (S.U.E.*)	----- TUL
U/G Tank; Water, Gas, Oil	◻
Underground Storage Tank, Approx. Loc.	⊕
A/G Tank; Water, Gas, Oil	◻
Geoenvironmental Boring	⊕
U/G Test Hole LOS A (S.U.E.*)	⊕
Abandoned According to Utility Records	AATUR
End of Information	E.O.I.

### UTILITIES BY OTHERS

ALL PROPOSED UTILITY WORK SHOWN ON THIS SHEET WILL BE DONE BY OTHERS. NO PAYMENT WILL BE MADE TO THE CONTRACTOR FOR PROPOSED UTILITY WORK SHOWN ON THIS SHEET.



X INDICATES REMOVAL

FOR -L- PROFILE, SEE SHEET 6  
FOR -Y- PROFILE, SEE SHEET 7  
DRIVE TURNOUT RADII ARE 10' UNLESS OTHERWISE NOTED

MATCHLINE -L- STA 24 + 50.00 SEE SHEET UO 5

5/14/99

REVISIONS

Ashe\Coor\10426 PM Utility Relocations\Plans\BR0002 UTIL - psh - 4.dgn  
denim\page

