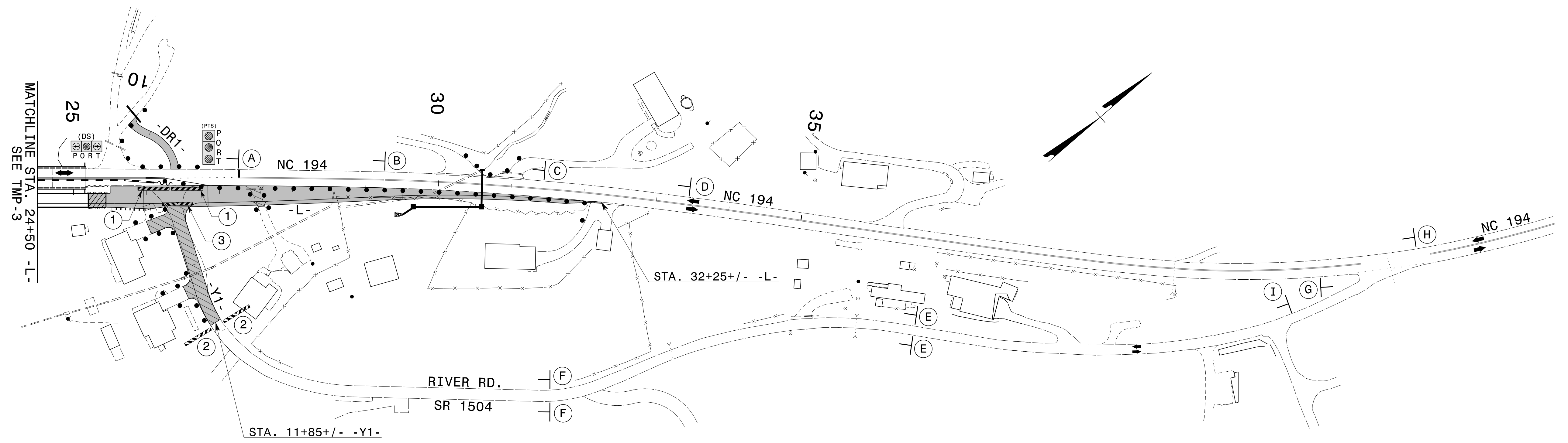
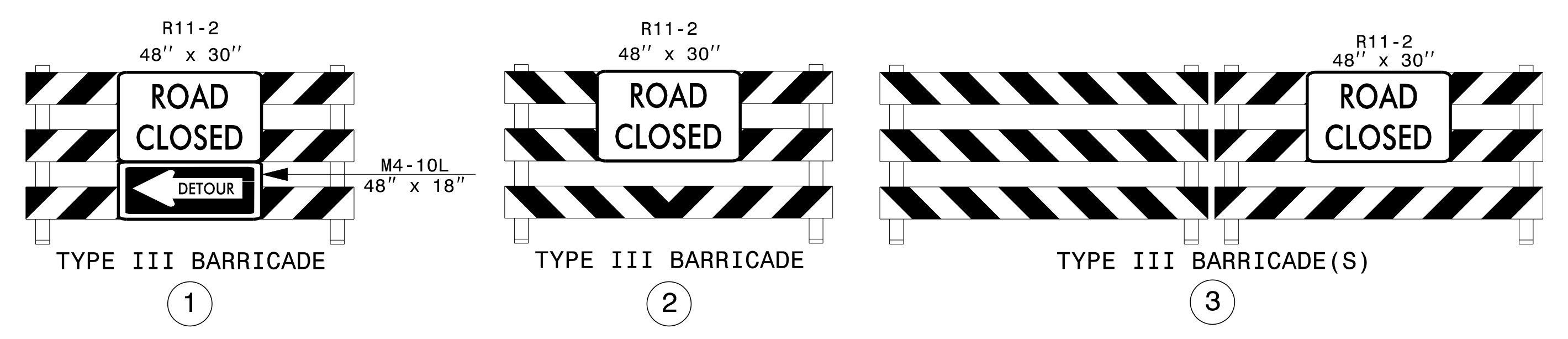


* SEE SHEET TMP-2B FOR SIGN DESIGN



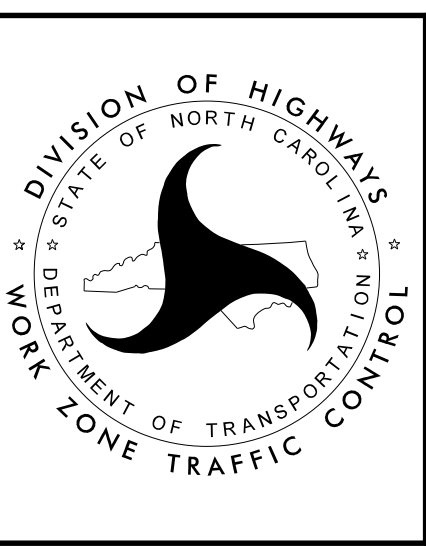
CONTRACTOR SHALL MAINTAIN ACCESS TO ALL DRIVEWAYS

CONSTRUCT UNDER TRAFFIC



4/24/2020 0:00 Division\NBR0002\Traffic\TrafficControl\TCP\BR0002_TC_PHL_TMP04A.dgn User:KEDAS

APPROVED:
DATE: 8/16/2021



**PHASE I DETAILS
OFF-SITE DETOUR
RIVER ROAD
SR 1504**

DOCUMENT NOT CONSIDERED FINAL
UNLESS ALL SIGNATURES COMPLETED