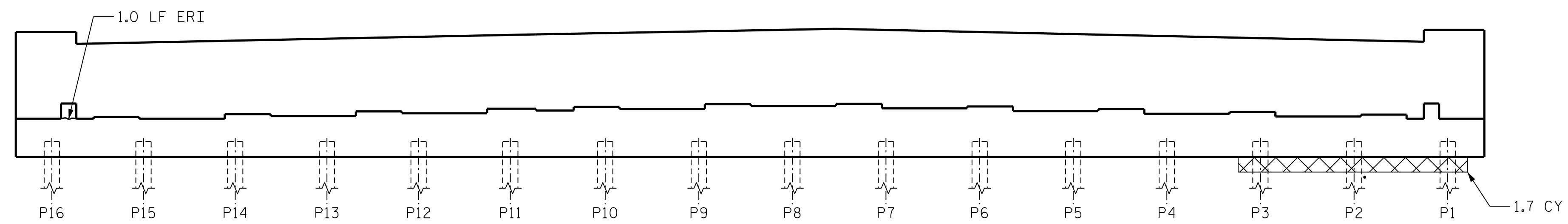
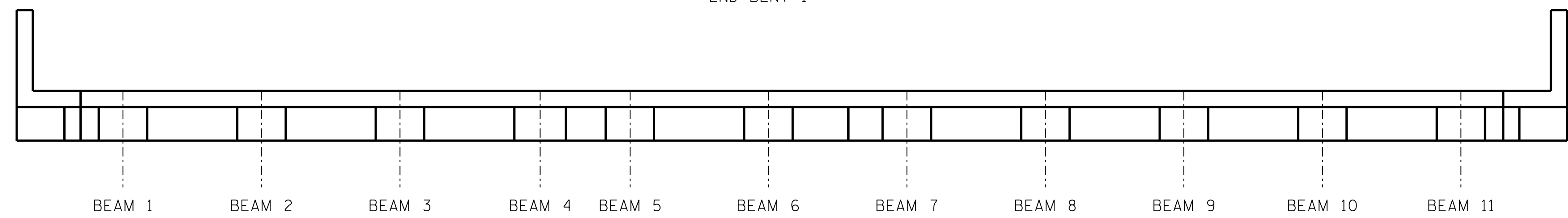


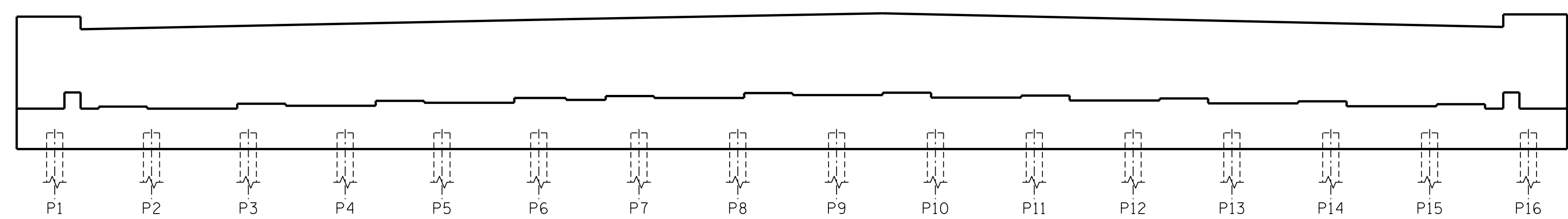
PLAN
END BENT 1



ELEVATION
END BENT 1



PLAN
END BENT 2



ELEVATION
END BENT 2

NOTES

REPAIR LOCATIONS AND ESTIMATE OF QUANTITIES ARE GIVEN WITH THE BEST INFORMATION AVAILABLE. IF ADDITIONAL REPAIRS NOT SHOWN ON THE DRAWINGS ARE DEEMED NECESSARY BY THE INSPECTOR OR ENGINEER THE CONTRACTOR SHALL NOTE ON THE DRAWINGS THE APPROXIMATE LOCATION AND DESCRIPTION OF THE REPAIRS AND ADJUST THE ACTUAL QUANTITIES ENTERED INTO THE REPAIR QUANTITY TABLE.

FOR EPOXY RESIN INJECTION, SEE SPECIAL PROVISIONS.

FOR FLOWABLE FILL, SEE SPECIAL PROVISIONS.

CLEAN AND REMOVE DEBRIS FROM THE TOP OF THE CAP AND APPLY EPOXY PROTECTIVE COATING TO THE TOP SURFACES OF THE CAP. THE CONTRACTOR SHALL NOT COAT THE AREA OF THE CAP BENEATH THE MASONRY PLATES. FOR EPOXY COATING AND DEBRIS REMOVAL, SEE SPECIAL PROVISIONS.

AS-BUILT REPAIR QUANTITY TABLE

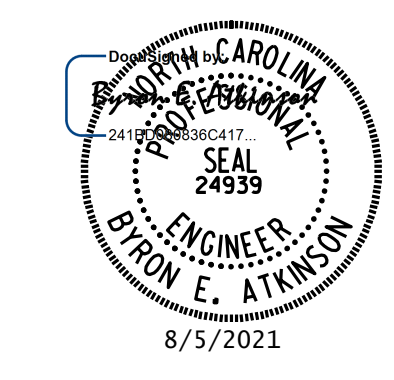
END BENT 1	QUANTITIES			
	ESTIMATE		ACTUAL	
SHOTCRETE REPAIRS	AREA SF	VOLUME CF	AREA SF	VOLUME CF
CAP (VERTICAL FACE)	0.0	0.0		
CAP (HORIZONTAL FACE)	0.0	0.0		
CONCRETE REPAIRS	AREA SF	VOLUME CF	AREA SF	VOLUME CF
CAP	0.0	0.0		
EPOXY RESIN INJECTION	LIN. FT.		LIN. FT.	
CAP	1.0			
BACKWALL	0.0			
EPOXY COATING	AREA SF		AREA SF	
TOP OF CAP	200.2			
FLOWABLE FILL	VOLUME CY		VOLUME CY	
BOTTOM OF CAP	1.7			
END BENT 2	QUANTITIES			
	ESTIMATE		ACTUAL	
SHOTCRETE REPAIRS	AREA SF	VOLUME CF	AREA SF	VOLUME CF
CAP (VERTICAL FACE)	0.0	0.0		
CAP (HORIZONTAL FACE)	0.0	0.0		
CONCRETE REPAIRS	AREA SF	VOLUME CF		
CAP	0.0	0.0		
EPOXY RESIN INJECTION	LIN. FT.		LIN. FT.	
CAP	0.0			
BACKWALL	0.0			
EPOXY COATING	AREA SF		AREA SF	
TOP OF CAP	200.2			
FLOWABLE FILL	VOLUME CY		VOLUME CY	
BOTTOM OF CAP	0.0			

VALUES IN CHART REPRESENT ESTIMATED REPAIR TOTALS AFTER REMOVAL OF UNSOUND CONCRETE. MIN. OF 1" BEHIND REBAR AND MIN. 2" CL. TO SAWCUT. SEE REPAIR DETAILS.

KEY

- ERI EPOXY RESIN INJECTION
- FLOWABLE FILL

PROJECT NO. 15BPR.39
ROCKINGHAM COUNTY
 BRIDGE NO. 780132



**DOCUMENT NOT CONSIDERED FINAL
UNLESS ALL SIGNATURES COMPLETED**

MI ENGINEERING
 1011 SCHAUB DRIVE, SUITE 100
 RALEIGH, NC 27606
 (919) 851-6606
 FIRM PE NUMBER: P-0671

STATE OF NORTH CAROLINA
 DEPARTMENT OF TRANSPORTATION
 RALEIGH

END BENT 1 & 2

REVISIONS						SHEET NO.
NO.	BY:	DATE:	NO.	BY:	DATE:	S-8 TOTAL SHEETS 16
1			3			
2			4			

8/5/2021 11:57:28 AM User: blanning Filename: N:\NC Bridges\2018 Archive\1800\1.12.Rockingham 132 Rehab\Structure\401_021.15BPR39_SMU_EBI_780132.dgn

DRAWN BY : W.O. KEITH DATE : 02/19
 CHECKED BY : B.E. ATKINSON DATE : 02/19
 DESIGN ENGINEER OF RECORD : B.E. ATKINSON DATE : 02/19