

MESSAGE NO. 1	MESSAGE NO. 2
US 301 EXT CLSD 1 MILE	US 301 DETOUR EXIT 13B

CHANGEABLE MESSAGE SIGN

1

MESSAGE NO. 1	MESSAGE NO. 2
US 301 EXIT CLOSED	US 301 DETOUR EXIT 13B

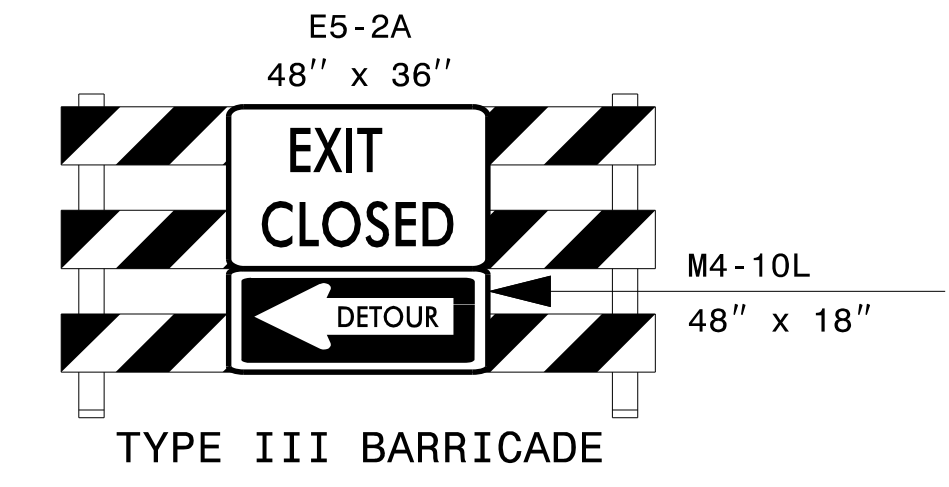
CHANGEABLE MESSAGE SIGN

2

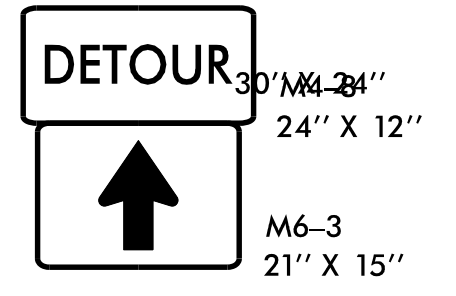
MESSAGE NO. 1
US 301 DETOUR EXIT 13B

CHANGEABLE MESSAGE SIGN

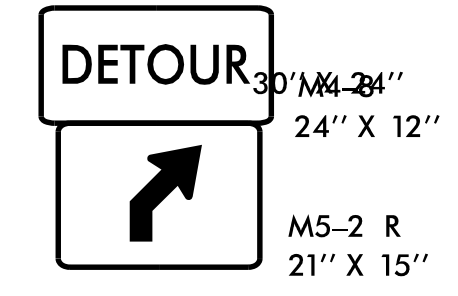
3



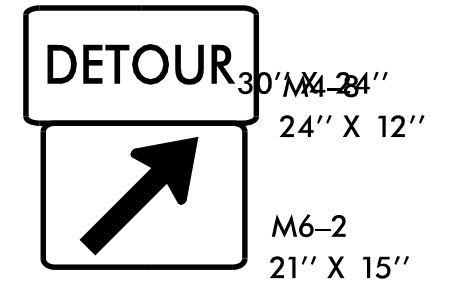
4



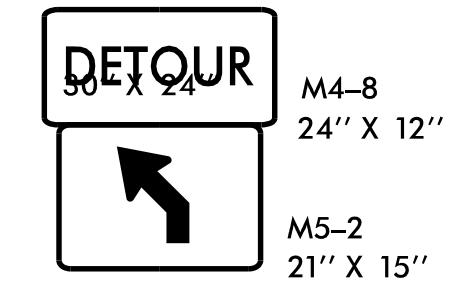
5



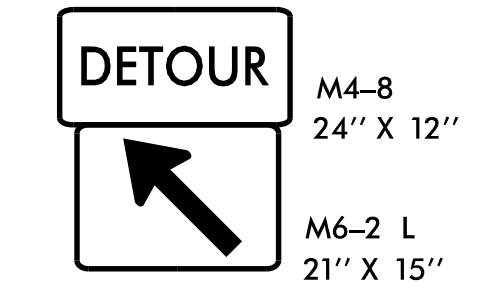
6



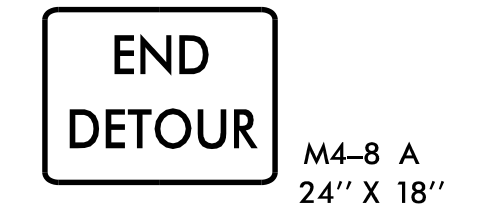
7



8



9



10

DETOUR DESCRIPTION:

I95 NB TO EXIT 7 TOWARDS EXITS 13A-B TO EXIT 13B TO 209A TO I95 SB TO EXIT 10 (US 301)

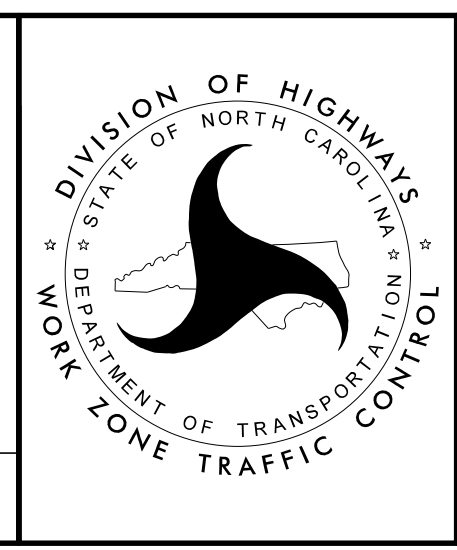
NOTES:

1. TRAFFIC CONTROL DEVICES 1 THRU 10 SHALL BE INSTALLED PER ENGINEER'S INSTRUCTIONS.

APPROVED: *Jacob Duke*
 DATE: 8/13/2021

SEAL

DOCUMENT NOT CONSIDERED FINAL UNLESS ALL SIGNATURES COMPLETED



DIVISION OF HIGHWAYS
 STATE OF NORTH CAROLINA
 DEPARTMENT OF TRANSPORTATION
 WORK ZONE TRAFFIC CONTROL

MILE MARKER 10
 INTERCHANGE
 I95 NB EXIT 10
 DETOUR

8/13/2021 15939_TC_TMP_Detour_I30_I95_NB_Exit10.dgn User: jdebone