

PROJECT REFERENCE NO. 15614.1075010	SHEET NO. 6
RW SHEET NO.	
ROADWAY DESIGN ENGINEER	HYDRAULICS ENGINEER
<b>DOCUMENT NOT CONSIDERED FINAL UNLESS ALL SIGNATURES COMPLETED</b>	
<b>TGS ENGINEERS</b> 804-C N. LAFAYETTE ST SHELBY, NC 28150 PH: (704) 476-0003 CORP. LICENSE NO.: C-0275	

ALL DUKE TRANSMISSION LINES ARE TO BE TREATED WITH CLEARANCE AND OFFSET GUIDELINES AS ESTABLISHED FOR 100KV POWERED RATING.

LANDSLIDE OUTLINES - ACTIVE

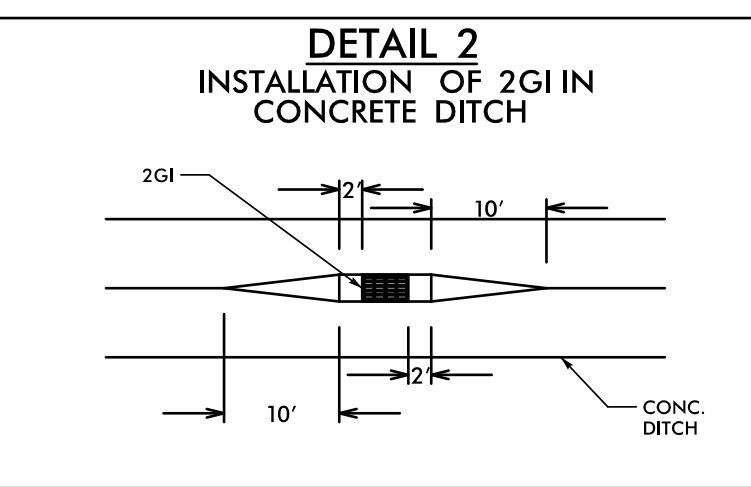
APPROXIMATE ALLOWABLE WORKING AREA (SEE EC PLANS FOR ADDITIONAL INFORMATION). FINAL LIMITS TO BE SET AS DIRECTED BY THE ENGINEER.

**-HGR- CURVE DATA**

PI Sta 45+86.42 Δ = 24° 00' 28.0" (LT) D = 19' 45' 25.8" L = 121.51' T = 61.66' R = 290.00'	PI Sta 50+90.24 Δ = 10° 08' 44.8" (LT) D = 5' 06' 56.5" L = 198.33' T = 99.42' R = 1,120.00'	PI Sta 53+74.76 Δ = 13° 18' 26.3" (RT) D = 6' 44' 26.4" L = 197.42' T = 99.16' R = 850.00'	PI Sta 56+52.71 Δ = 12° 50' 07.5" (LT) D = 5' 37' 02.0" L = 228.50' T = 114.73' R = 1,020.00'
--	---	---	--

**-I26- CURVE DATA**

PIs Sta 466+13.01 Θs = 0° 30' 00.0" Ls = 200.00' LT = 133.33' ST = 66.67'	PI Sta 469+36.39 Δ = 2° 34' 00.0" (LT) D = 0° 30' 00.0" L = 513.33' T = 256.71' R = 11,459.16'	PIs Sta 472+59.68 Θs = 0° 30' 00.0" Ls = 200.00' LT = 133.33' ST = 66.67'
---	---	---

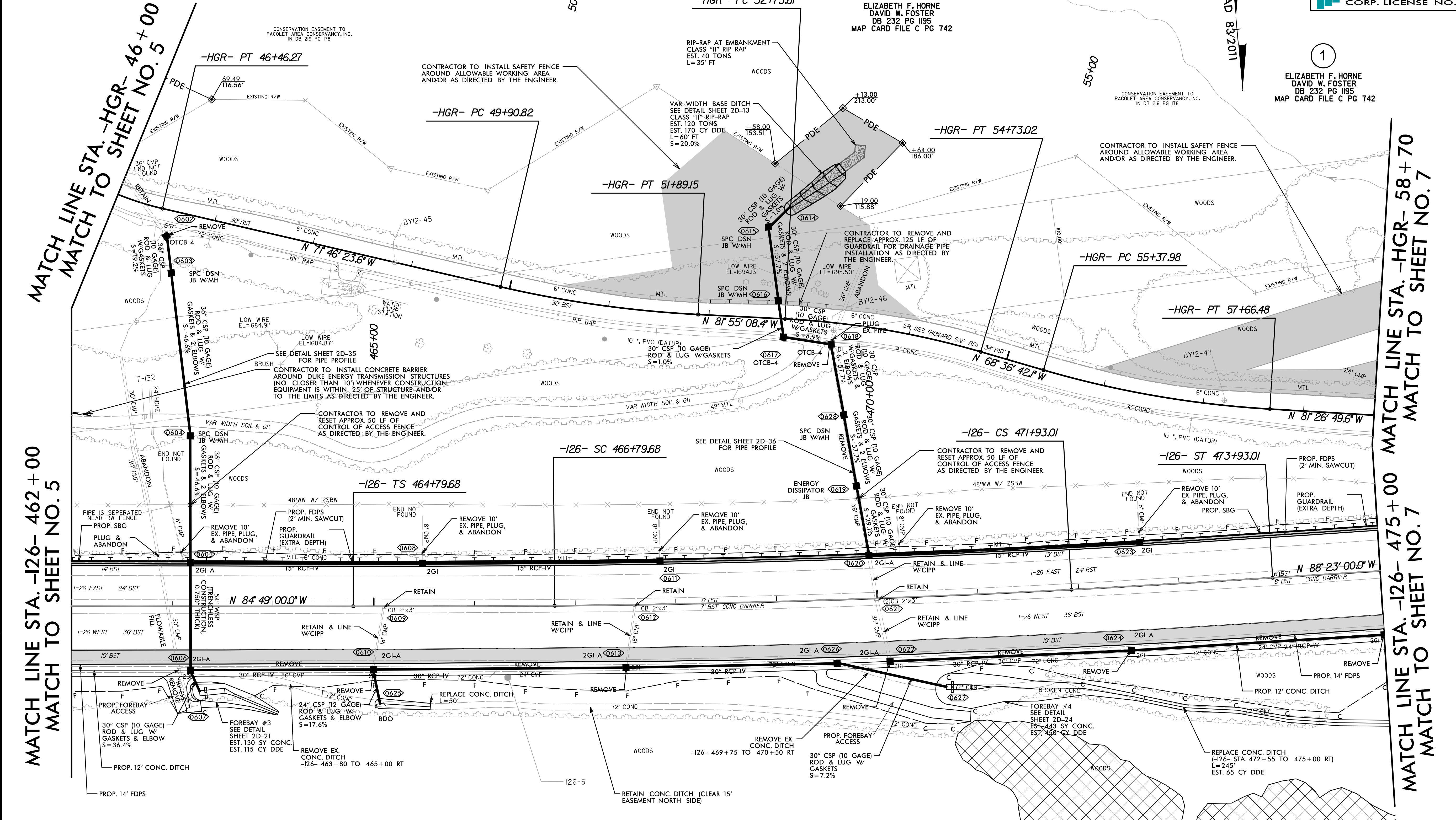


NOTE: ALL CSP GASKETS ARE TO BE SLEEVE GASKETS.

ELIZABETH F. HORNE  
DAVID W. FOSTER  
DB 232 PG 1195  
MAP CARD FILE C PG 742

ELIZABETH F. HORNE  
DAVID W. FOSTER  
DB 232 PG 1195  
MAP CARD FILE C PG 742

ELIZABETH F. HORNE  
DAVID W. FOSTER  
DB 232 PG 1195  
MAP CARD FILE C PG 742



MATCH LINE STA. -HGR- 46+00  
MATCH TO SHEET NO. 5

MATCH LINE STA. -I26- 462+00  
MATCH TO SHEET NO. 5

MATCH LINE STA. -HGR- 58+70  
MATCH TO SHEET NO. 7

MATCH LINE STA. -I26- 475+00  
MATCH TO SHEET NO. 7

REVISIONS

10/17/2021  
X:\NCDDT I-26 Howard Gap Rd Rehab\Roadway\Proj\I-26-Howard Gap\_Rdy\_psh\_06.dgn