

**This electronic collection of documents is provided
for the convenience of the user
and is Not a Certified Document –**

**The documents contained herein were originally issued
and sealed by the individuals whose names and license
numbers appear on each page, on the dates appearing
with their signature on that page.**

**This file or an individual page
shall not be considered a certified document.**

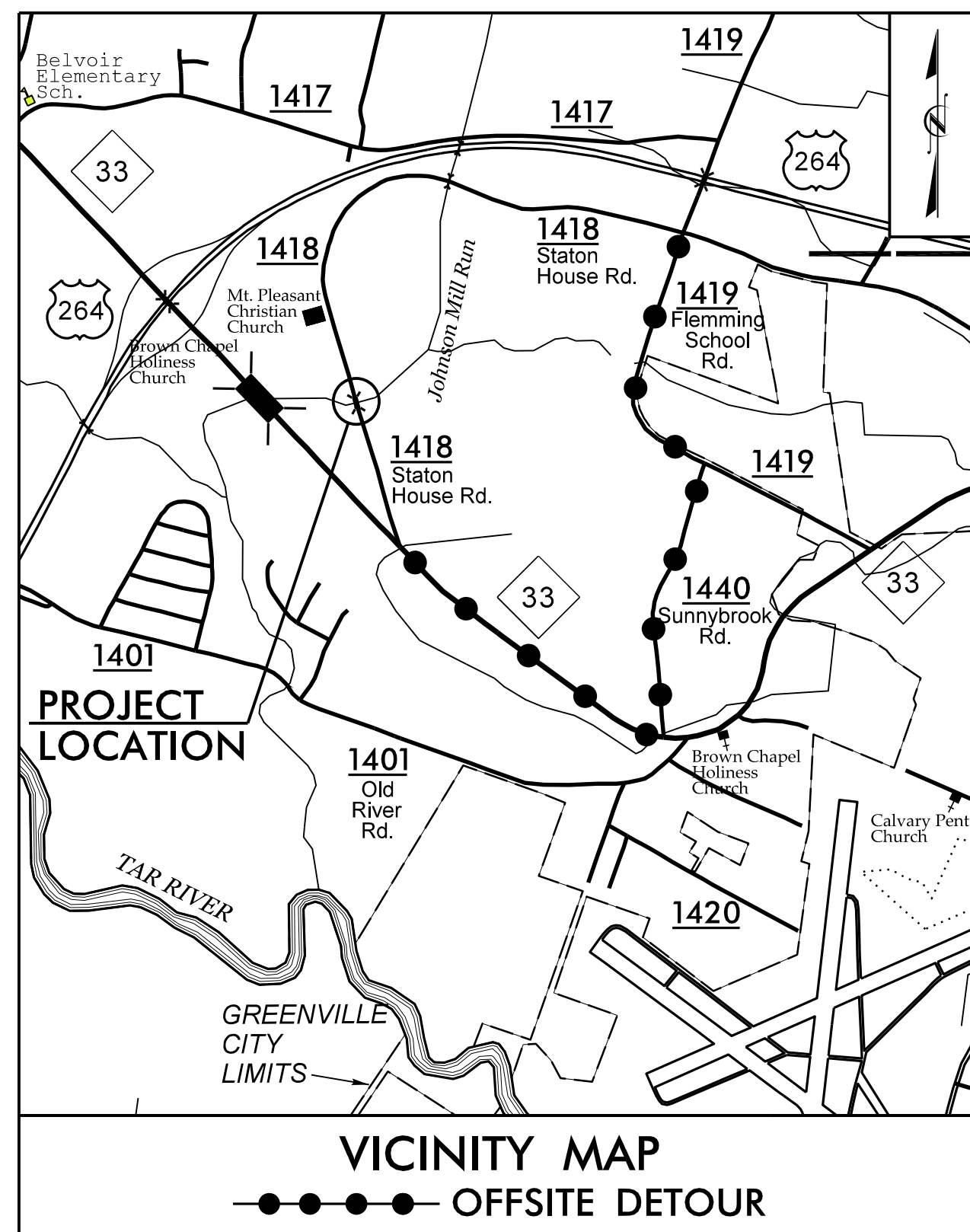
03-DEC-2019 09:07
 S:\Server_Files\PROJECTS\2016\A2016703.00_TGS_Div-2 LIB B-4788\Design\Utilities\Engineering\UBOX\Proj\B-4788_Ut_tsh_U01_psh.dgn
 \$\$\$USERNAME\$\$\$

TIP PROJECT: 17BP.2.R.92

STATE OF NORTH CAROLINA
DIVISION OF HIGHWAYS

T.I.P. NO.	SHEET NO.
17BP.2.R.92	UO-1

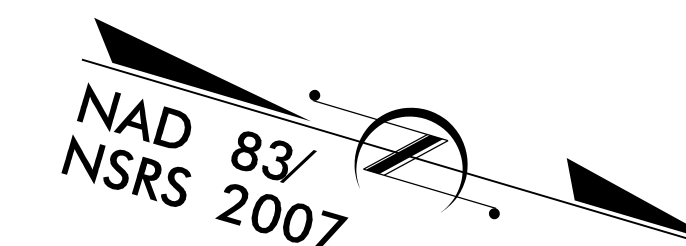
NOTE:
ALL UTILITY WORK SHOWN ON THIS SHEET IS DONE BY OTHERS.
NO PAYMENT WILL BE MADE TO THE CONTRACTOR FOR UTILITY WORK SHOWN ON THIS SHEET.



**UTILITIES BY OTHERS PLANS
PITT COUNTY**

**LOCATION: BRIDGE NO. 171 OVER JOHNSON MILL RUN
ON SR 1418 (STATION HOUSE ROAD)**

TYPE OF WORK: POWER, TELECOM, GAS, AND WATER RELOCATIONS



BEGIN STATE PROJECT 17BP.2.R.92
-L- STA. 10 + 65.00

BEGIN BRIDGE
-L- STA. 13 + 34.63

END BRIDGE
-L- STA. 14 + 22.37

END STATE PROJECT 17BP.2.R.92
-L- STA. 16 + 61.00

TO NC 33
(BEVOIR HWY.)

-L- SR 1418

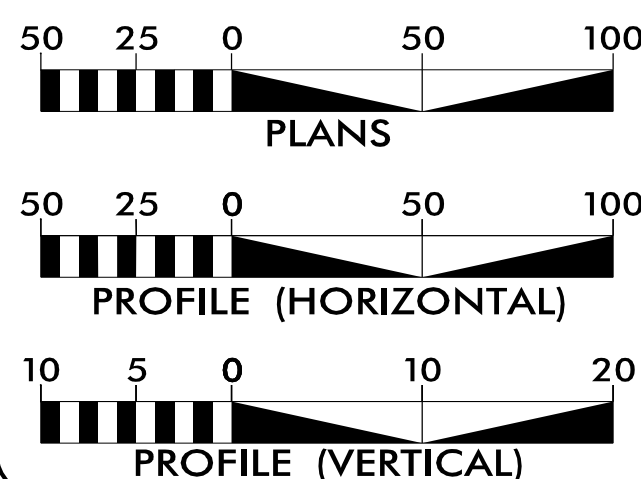
(STATION HOUSE ROAD)

TO SR 1419
(FLEMMING SCHOOL RD.)

**4
UO-2**

DOCUMENT NOT CONSIDERED FINAL
UNLESS ALL SIGNATURES COMPLETED

GRAPHIC SCALES



INDEX OF SHEETS

SHEET NO.	DESCRIPTION
UO-1	TITLE SHEET
UO-2	UBO PLAN SHEET

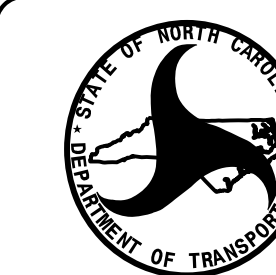
UTILITY OWNERS WITH CONFLICTS

- (A) POWER - GREENVILLE UTILITIES COMMISSION
- (B) TELECOM - CENTURYLINK
- (C) TELECOM - SUDDENLINK
- (D) GAS - GREENVILLE UTILITIES COMMISSION
- (E) WATER - GREENVILLE UTILITIES COMMISSION

PREPARED IN THE OFFICE OF:



Michael Davis UTILITY COORDINATION PROJECT MANAGER
 Harris Winters PROJECT UTILITY COORDINATOR
 Jordan Chapman PROJECT UTILITY DESIGNER



**DIVISION OF HIGHWAYS
UTILITIES UNIT**
 1555 MAIL SERVICES CENTER
 RALEIGH NC 27699-1555
 PHONE (919) 707-6690
 FAX (919) 250-4151

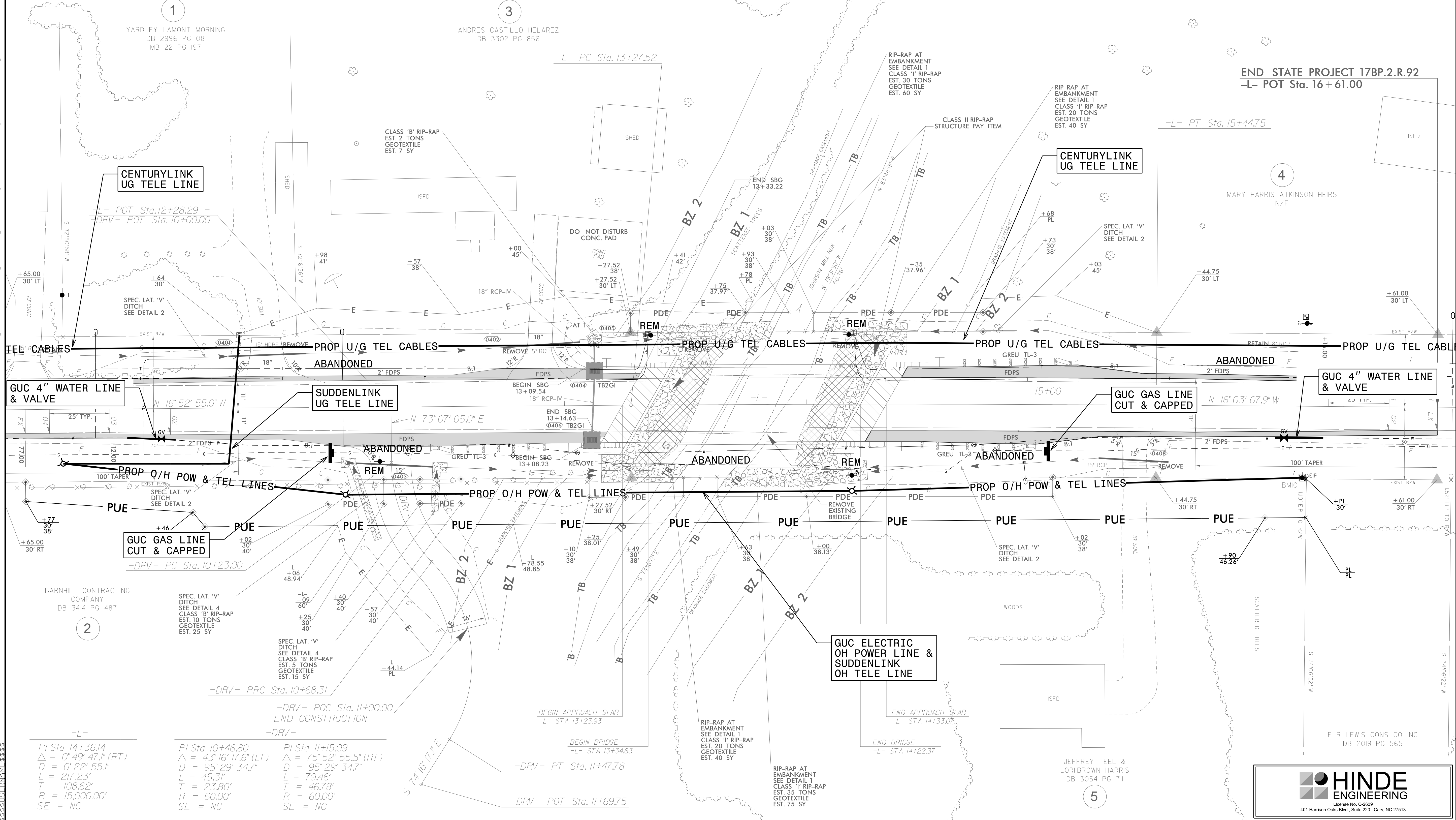
Michael Aman, P.E. DIVISION CONTACT #1
 DIVISION CONTACT #2
 DIVISION CONTACT #3
 DIVISION CONTACT #4

UTILITIES BY OTHERS

NOTE:
 ALL UTILITY WORK SHOWN ON THIS SHEET WILL BE DONE BY OTHERS. NO PAYMENT WILL BE MADE TO THE CONTRACTOR FOR UTILITY WORK SHOWN ON THIS SHEET.

BEGIN STATE PROJECT 17BP.2.R.92
 -L- POT Sta. 10+65.00

END STATE PROJECT 17BP.2.R.92
 -L- POT Sta. 16+61.00



1
 YARDLEY LAMONT MORNING
 DB 2996 PG 08
 MB 22 PG 197

3
 ANDRES CASTILLO HELAREZ
 DB 3302 PG 856

4
 MARY HARRIS ATKINSON HEIRS
 N/F

2
 BARNHILL CONTRACTING
 COMPANY
 DB 3414 PG 487

5
 JEFFREY TEEL &
 LORIBROWN HARRIS
 DB 3054 PG 711

PI Sta 14+36.14 $\Delta = 0^\circ 49' 47.1''$ (RT) $D = 0^\circ 22' 55.1''$ $L = 217.23'$ $T = 108.62'$ $R = 15,000.00'$ $SE = NC$	PI Sta 10+46.80 $\Delta = 43^\circ 16' 17.6''$ (LT) $D = 95^\circ 29' 34.7''$ $L = 45.31'$ $T = 23.80'$ $R = 60.00'$ $SE = NC$	PI Sta 11+15.09 $\Delta = 75^\circ 52' 55.5''$ (RT) $D = 95^\circ 29' 34.7''$ $L = 79.46'$ $T = 46.78'$ $R = 60.00'$ $SE = NC$
--	--	--

03-DEC-2019 09:15 PROJECTS\2016\A2016703.00_TGS.Div-2.LIB.B-4788.Design\Utilities\Engineering\UBO\Pro\B-4788_Ut_rdy04_U002_psh.dgn
 03-DEC-2019 09:15 PROJECTS\2016\A2016703.00_TGS.Div-2.LIB.B-4788.Design\Utilities\Engineering\UBO\Pro\B-4788_Ut_rdy04_U002_psh.dgn