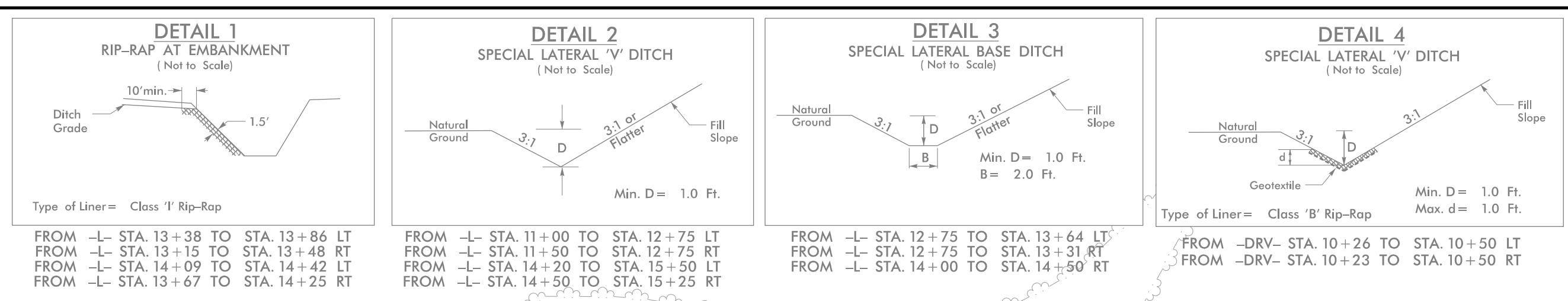


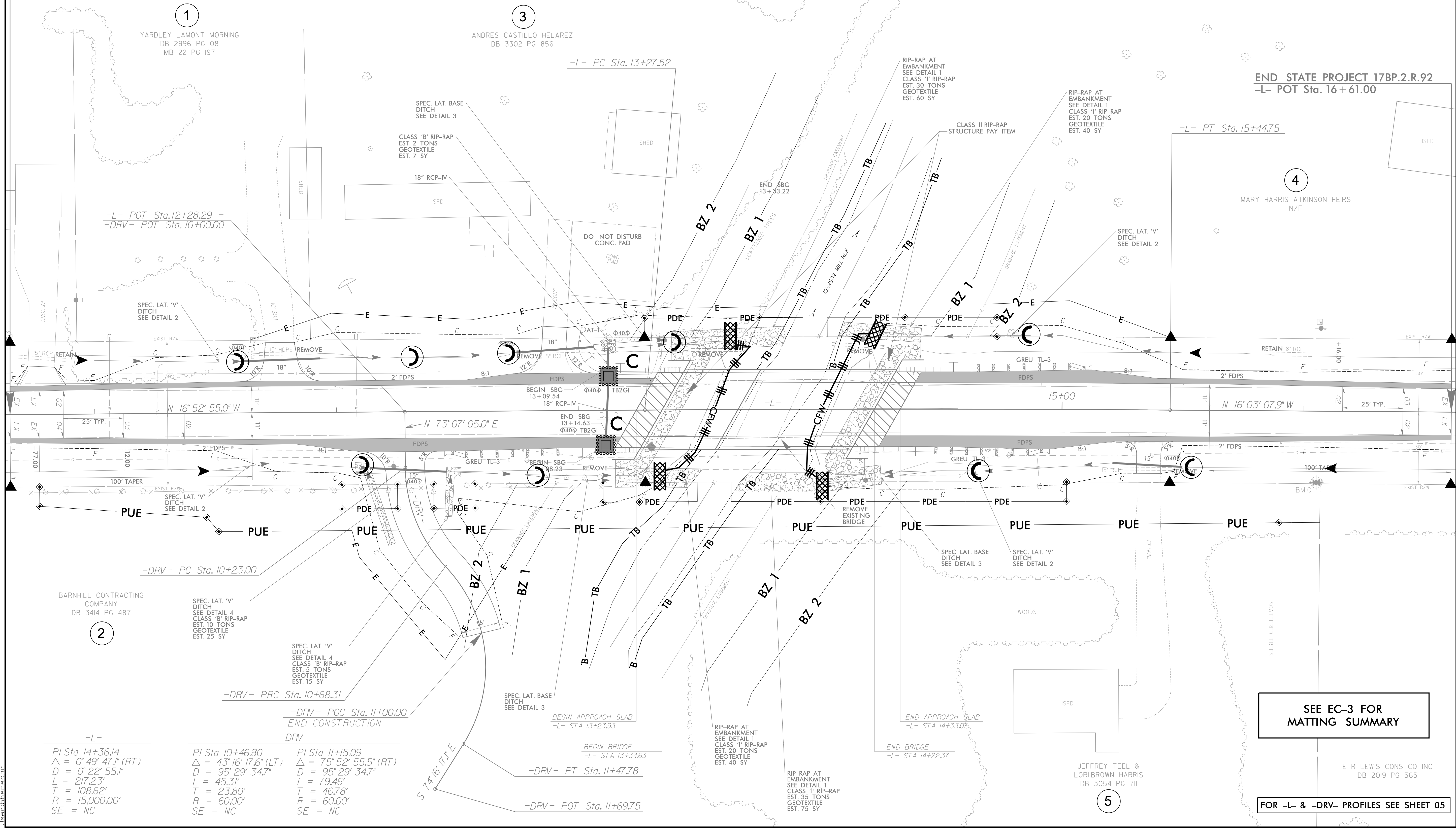
8/17/99
X:\Road\17BP.2.R.92\Drawings\17BP.2.R.92\17BP.2.R.92_EC.psh_04.dgn
10/22/2019 10:47:48 AM



PROJECT REFERENCE NO. 17BP.2.R.92		SHEET NO. EC-5	
RW SHEET NO.			
ROADWAY DESIGN ENGINEER		HYDRAULICS ENGINEER	
TGS ENGINEERS 706 HILLSBOROUGH ST. STE. 200 RALEIGH, NC 27603 PH (919) 773-8887 CORP. LICENSE NO.: C-0275			

BEGIN STATE PROJECT 17BP.2.R.92
-L- POT Sta. 10+65.00

END STATE PROJECT 17BP.2.R.92
-L- POT Sta. 16+61.00



-L-	-DRV-	-DRV-
PI Sta 14+36.14 Δ = 0° 49' 47.1" (RT) D = 0' 22' 55.1" L = 217.23' T = 108.62' R = 15,000.00' SE = NC	PI Sta 10+46.80 Δ = 43° 16' 17.6" (LT) D = 95° 29' 34.7" L = 45.31' T = 23.80' R = 60.00' SE = NC	PI Sta 11+5.09 Δ = 75° 52' 55.5" (RT) D = 95° 29' 34.7" L = 79.46' T = 46.78' R = 60.00' SE = NC

SEE EC-3 FOR MATTING SUMMARY

FOR -L- & -DRV- PROFILES SEE SHEET 05

JEFFREY TEEL & LORIBROWN HARRIS
DB 2019 PG 565

REVISIONS