

## GENERAL NOTES

CHANGES MAY BE REQUIRED WHEN PHYSICAL DIMENSIONS IN THE DETAIL DRAWINGS, STANDARD DETAILS, AND ROADWAY DETAILS ARE NOT ATTAINABLE TO MEET FIELD CONDITIONS OR RESULT IN DUPLICATE OR UNDESIRED OVERLAPPING OF DEVICES. MODIFICATION MAY INCLUDE: MOVING, SUPPLEMENTING, COVERING, OR REMOVAL OF DEVICES AS DIRECTED BY THE ENGINEER.

THE FOLLOWING GENERAL NOTES APPLY AT ALL TIMES FOR THE DURATION OF THE CONSTRUCTION PROJECT EXCEPT WHEN OTHERWISE NOTED IN THE PLAN OR DIRECTED BY THE ENGINEER.

### TRAFFIC PATTERN ALTERATIONS

- A) NOTIFY THE ENGINEER THIRTY (30) CALENDAR DAYS PRIOR TO ANY TRAFFIC PATTERN ALTERATION. IN ORDER TO HAVE TIME TO ADEQUATELY REROUTE SCHOOL BUSESSES, PITT COUNTY SCHOOLS WILL BE CONTACTED AT (252-916-0944) AT LEAST ONE MONTH PRIOR TO ROAD CLOSURE. PITT COUNTY EMERGENCY SERVICES WILL BE CONTACTED AT (252-902-3652) AT LEAST ONE MONTH PRIOR TO ROAD CLOSURE TO MAKE THE NECESSARY TEMPORARY REASSIGNMENTS TO PRIMARY RESPONSE UNITS.

### SIGNING

- B) ENSURE ALL NECESSARY SIGNING IS IN PLACE PRIOR TO ALTERING ANY TRAFFIC PATTERN.

### PAVEMENT MARKINGS AND MARKERS

- C) DIVISION 2 WILL INSTALL PAVEMENT MARKINGS ON THE FINAL SURFACE AS FOLLOWS:

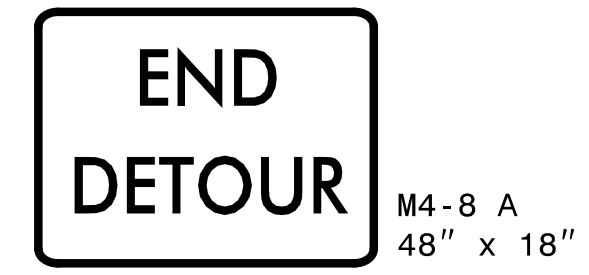
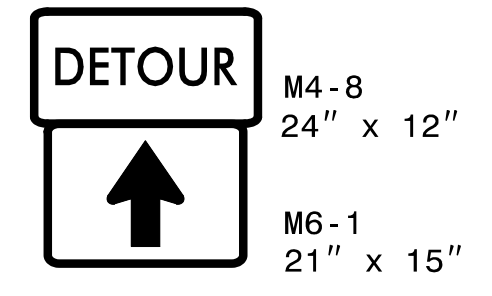
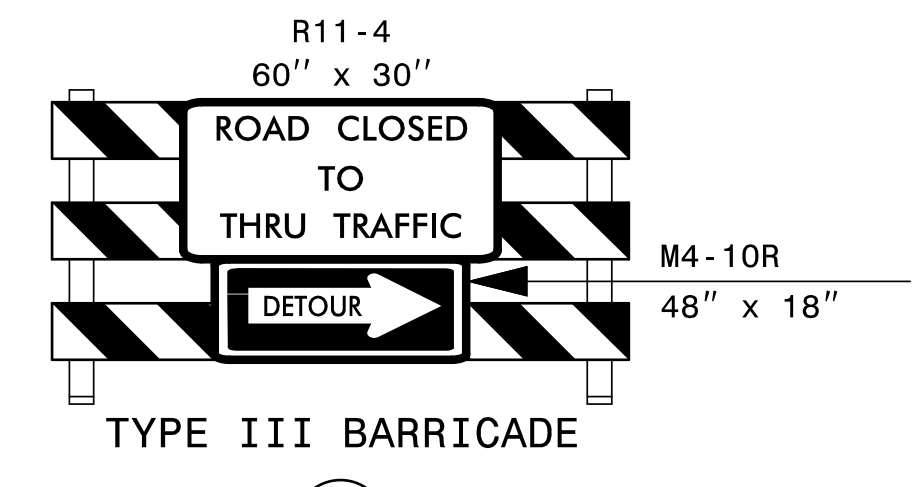
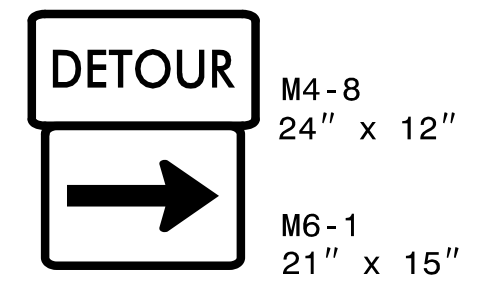
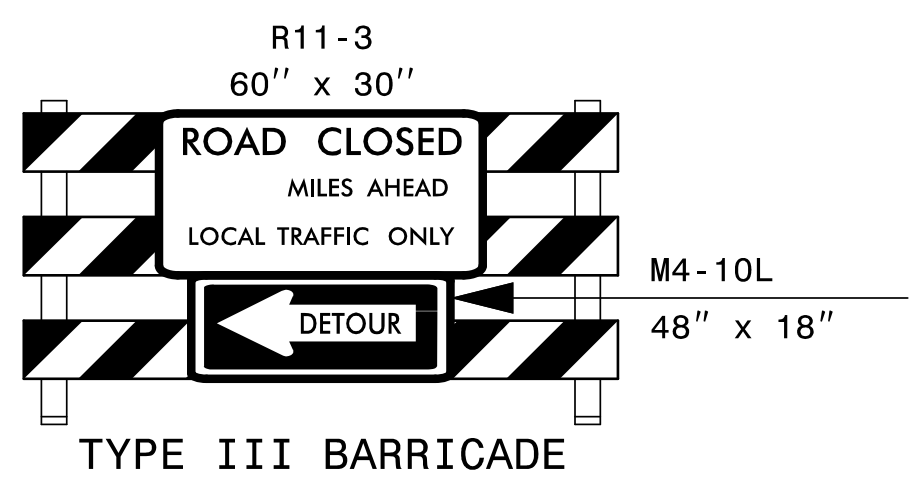
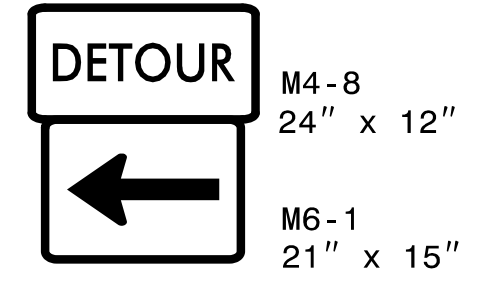
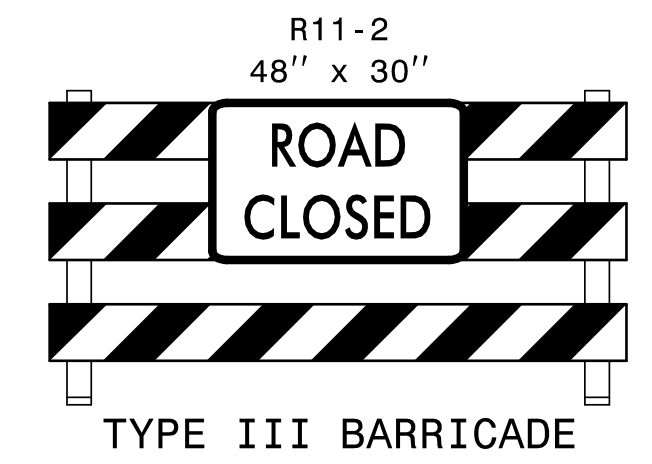
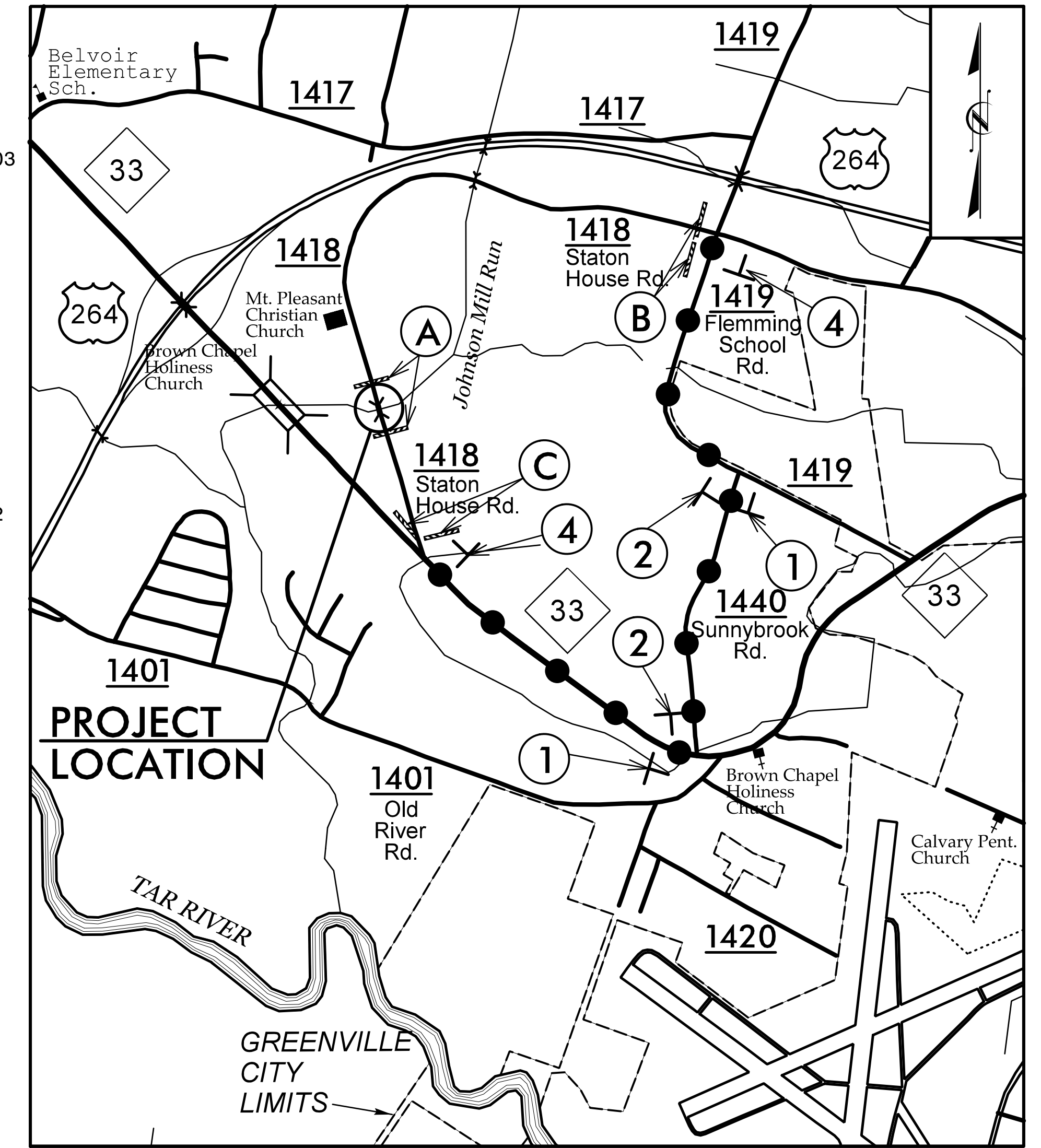
ROAD NAME	MARKING	MARKERS
SR 1418 (STATON HOUSE RD)	THERMOPLASTIC	RAISED

- D) DIVISION 2 WILL TIE PROPOSED PAVEMENT MARKING LINES TO EXISTING PAVEMENT MARKING LINES.
- E) DIVISION 2 WILL REMOVE ANY CONFLICTING MARKINGS OR MARKERS BEFORE SHIFTING TRAFFIC TO A NEW PATTERN.
- F) PASSING ZONE WILL BE DETERMINED IN THE FIELD AND MUST BE APPROVED BY THE ENGINEER.

- G) NCDOT DIVISION 2 WILL INSTALL AND MAINTAIN THE PROJECT DETOUR AND TYPE III BARRICADES AT THE PROJECT LIMITS. CONTACT JEFF DUNNING AT 252-439-2950 TWO WEEKS PRIOR TO CLOSING THE ROAD FOR DETOUR INSTALLATION.

## PHASING

- STEP 1: NCDOT DIVISION 2 WILL INSTALL ALL DETOUR ROUTE SIGNS USING RSD 1101.01 AND AS SHOWN.
- STEP 2: NCDOT DIVISION 2 WILL INSTALL TYPE III BARRICADES AND SIGNS, AND CLOSE SR 1418 (STATON HOUSE RD) TO TRAFFIC USING RSD 1101.03 (SHEET 1 OF 9) AND AS SHOWN.
- NCDOT DIVISION 2 WILL PLACE TRAFFIC ON DETOUR.
- STEP 3: DEMOLISH AND REMOVE THE EXISTING BRIDGE OVER JOHNSON MILL RUN. CONSTRUCT THE NEW BRIDGE OVER JOHNSON MILL RUN FROM -L- STA. 13+34.63 TO 14+22.37.
- CONSTRUCT THE ROADWAY ON SR 1418 (STATON HOUSE RD) FROM -L- STA. 10+65.00 TO -L- STA. 13+34.63 (BEGIN BRIDGE) AND FROM -L- STA. 14+22.37 (END BRIDGE) TO 16+61.00 UP TO AND INCLUDING THE FINAL LAYER OF SURFACE COURSE.
- STEP 4: UPON COMPLETION OF BRIDGE, APPROACHES, AND ROADWAY, DIVISION 2 WILL PLACE FINAL PAVEMENT MARKINGS AND MARKERS IN ACCORDANCE WITH RSD 1205.01, 1205.02, 1205.12, 1250.01, AND 1251.01. NCDOT DIVISION 2 WILL REMOVE BARRICADES, SIGNS, AND ALL OTHER TRAFFIC CONTROL DEVICES AND OPEN SR 1418 (STATON HOUSE RD) TO TRAFFIC IN FINAL PATTERN.



\* PLACE SIGN ③ ON RT SHOULDER FACING TRAFFIC

ESTIMATED ADDITIONAL SIGNS REQUIRED PER RSD 1101.03:  
 - W20-3 (18 EACH)  
 - W20-2 (2 EACH)  
 - SP-4 (6 EACH)

SEE RSD FOR SIGN PLACEMENT AND SIGN WORDING REQUIREMENTS.

APPROVED: *Tommy Aguilera, PE*  
 DATE: 3/3/2021 | 1:30 PM PM  
 SEAL  
 PROFESSIONAL ENGINEER  
 SEAL 028392  
 CLAYTON T. REGISTER

DIVISION OF HIGHWAYS  
 NORTH CAROLINA  
 DEPARTMENT OF TRANSPORTATION  
 WORK ZONE TRAFFIC CONTROL

GENERAL NOTES,  
 PHASING,  
 AND DETOUR

DOCUMENT NOT CONSIDERED FINAL  
 UNLESS ALL SIGNATURES COMPLETED

3/3/2021  
 X:\NCDOT\AB-4788\TrafficControl\TCP\4788\_TC\_TMP\_02.dgn  
 User:bevans