

NOTES

STRUCTURAL STEEL SHALL BE AASHTO GRADE 36 OR GREATER.

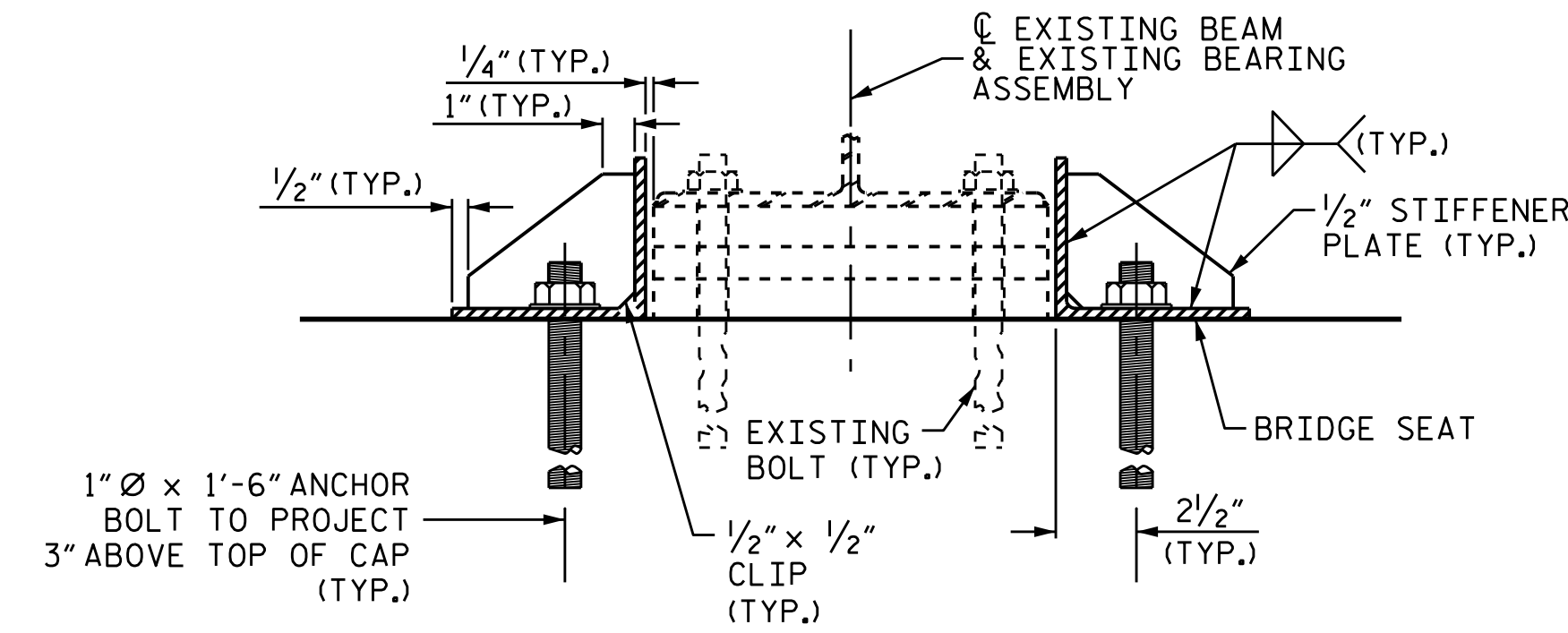
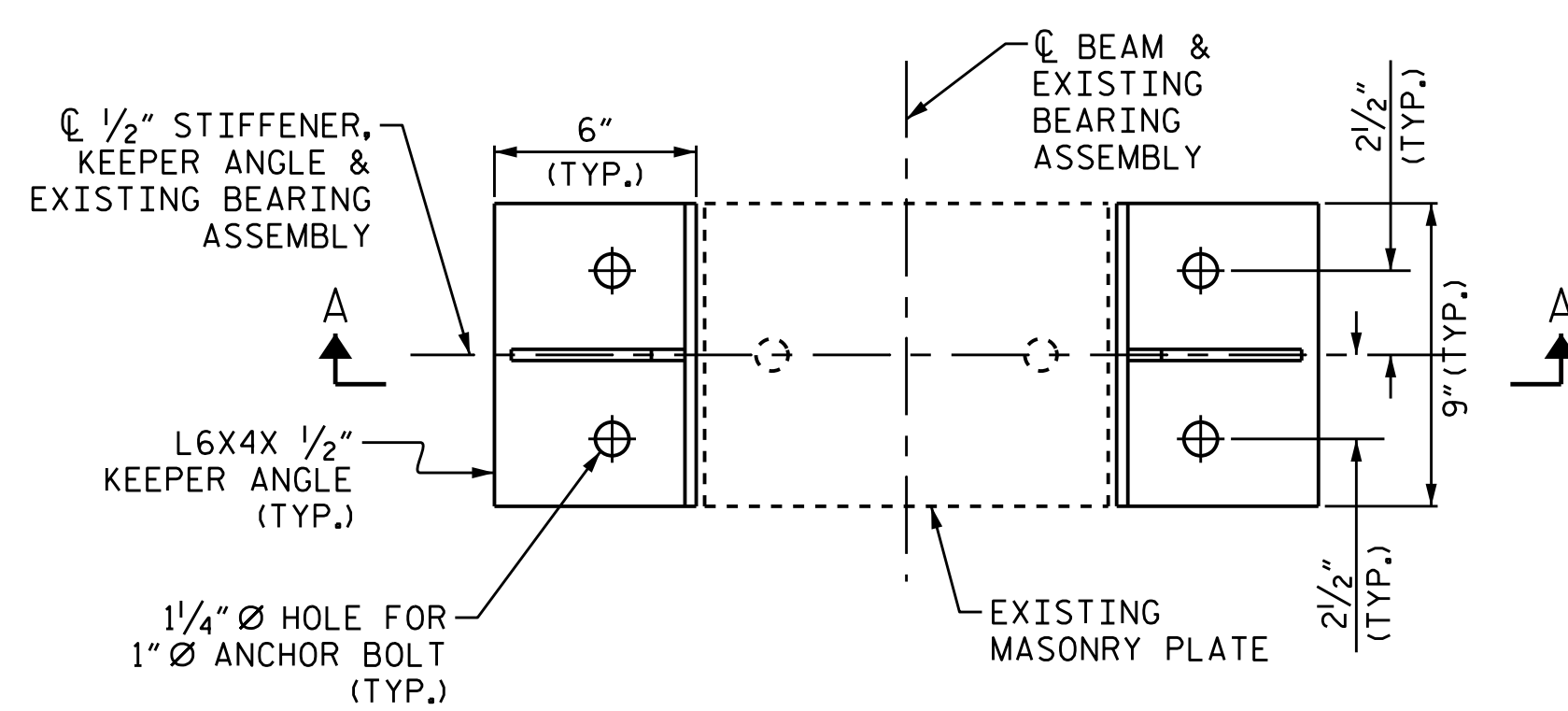
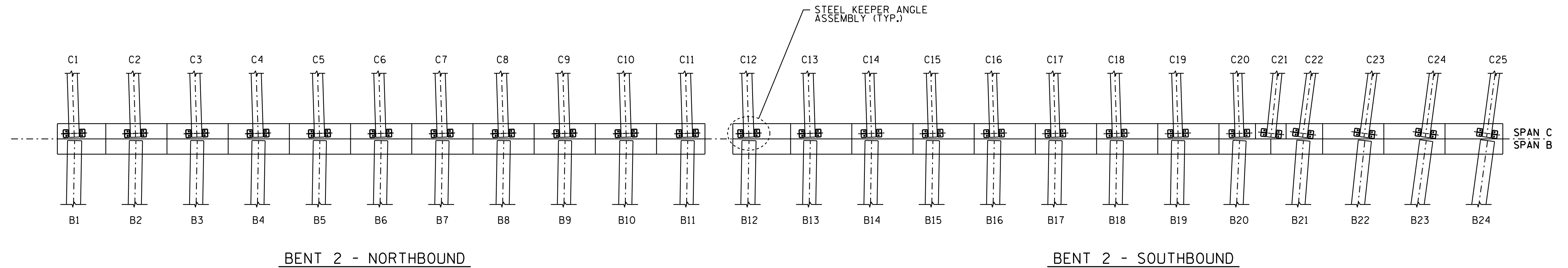
STRUCTURAL STEEL, ANCHOR BOLTS, NUTS AND WASHERS SHALL BE GALVANIZED IN ACCORDANCE WITH THE STANDARD SPECIFICATIONS.

ANCHOR BOLTS SHALL MEET THE REQUIREMENTS OF ASTM A449. NUTS SHALL MEET THE REQUIREMENTS OF AASHTO M291-DH OR AASHTO M292-2H. WASHERS SHALL MEET THE REQUIREMENTS OF AASHTO M293. SHOP DRAWINGS ARE REQUIRED FOR ANCHOR BOLTS, NUTS AND WASHERS. SHOP INSPECTION IS REQUIRED.

THE CONTRACTOR MAY USE ADHESIVELY ANCHORED ANCHOR BOLTS. NO FIELD TESTING IS REQUIRED. FOR ADHESIVELY ANCHORED ANCHOR BOLTS OR DOWELS, SEE SECTION 420 OF THE STANDARD SPECIFICATIONS.

FOR STEEL KEEPER ANGLE ASSEMBLY, SEE SPECIAL PROVISIONS.

NUTS FOR ANCHOR BOLTS ARE TO BE TIGHTENED FINGER TIGHT AND THEN BACKED OFF 1/2 TURN. THE THREAD OF THE NUT AND BOLT SHALL THEN BE BURR WITH A SHARP POINTED TOOL.

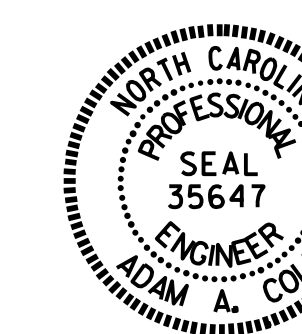


STEEL KEEPER ANGLE ASSEMBLY DETAILS

STEEL KEEPER ANGLE ASSEMBLY	
EACH	
ESTIMATE	ACTUAL
25	

PROJ. NO. I-5746C
MECKLENBURG COUNTY
 BRIDGE NO. 590330

DocuSigned by:
02E838F8B074C5



8/23/2021

STATE OF NORTH CAROLINA
 DEPARTMENT OF TRANSPORTATION
 RALEIGH

STEEL KEEPER ANGLE ASSEMBLY DETAILS

DRAWN BY : R.L. PUTEK DATE : 05/2021
 CHECKED BY : H.A. LOCKLEAR DATE : 05/2021

23-AUG-2021 12:01
 R:\Structures\FINAL PLANS\Bridg 330\409.021.I5746C.SMU.SKAD.S9-11.590330.dgn
 daccle

DOCUMENT NOT CONSIDERED
 FINAL UNLESS ALL
 SIGNATURES COMPLETED

REVISIONS						SHEET NO.
NO.	BY:	DATE:	NO.	BY:	DATE:	
1			3			S9-11
2			4			TOTAL SHEETS 274