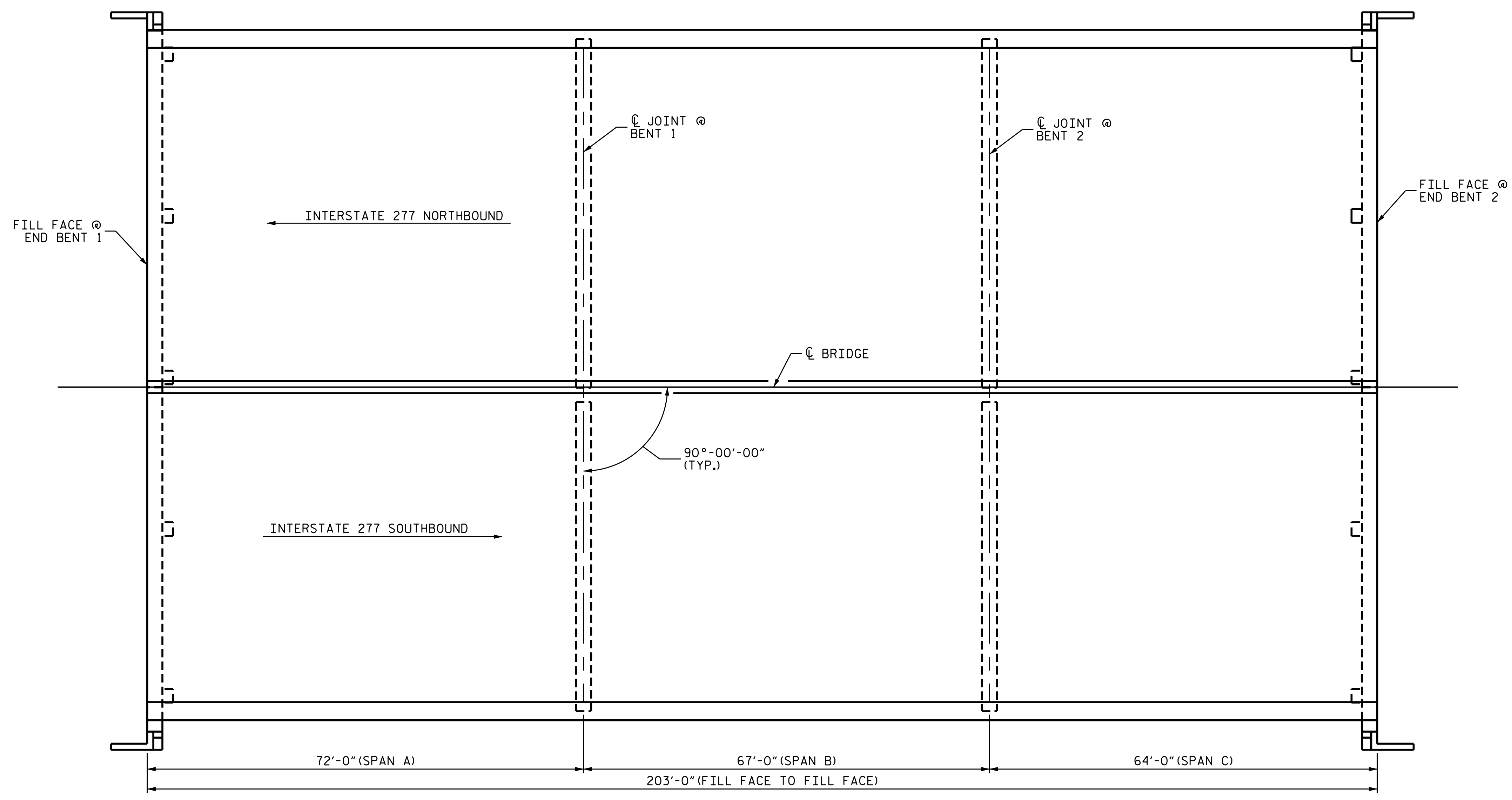


**NOTES**  
 GENERAL DRAWING INFORMATION IS TAKEN FROM THE ORIGINAL PLANS AND THE ROUTINE INSPECTION REPORT DATED 10/24/2020.  
 BRIDGE ORIENTATION CONFORMS TO EXISTING BRIDGE PLANS.

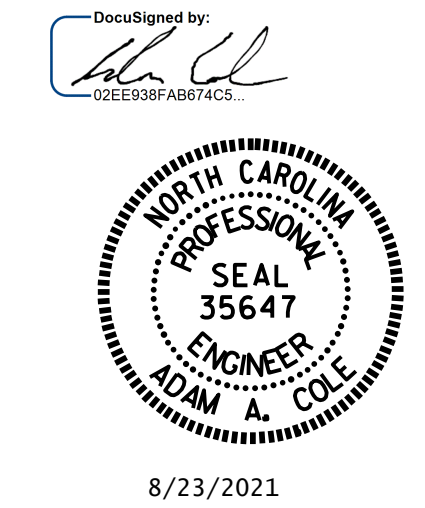
- SCOPE OF WORK**
- REMOVE ASPHALT WEARING SURFACE AND PARTIALLY REMOVE BRIDGE DECK CONCRETE BY SCARIFICATION AND SHOTBLASTING METHODS.
  - OVERLAY PREPARED BRIDGE DECK WITH POLYMER CONCRETE (PC).
  - GROOVE POLYMER CONCRETE (PC) BRIDGE DECK.
  - INSTALL FOAM JOINT SEALS.
  - CLEAN AND PAINT BEARINGS WITH HRCSA.
  - CLEAN GIRDER ENDS AND APPLY EPOXY COATINGS.
  - REPAIR DAMAGED MURAL PAINT WITH PRIMER AND TOPCOAT.
  - REMOVE UNSOUNDED CONCRETE AND PROPERLY PREPARE SHOTCRETE AND CONCRETE REPAIR AREAS.
  - REMOVE DEBRIS FROM TOP OF END BENT AND BENT CAPS AND APPLY EPOXY COATING.

CATS MILEPOST BLN 0.61-1 12TH STREET CROSSING.



I HEREBY CERTIFY THAT THIS STRUCTURE WAS REHABILITATED ACCORDING TO THESE PLANS OR AS NOTED HEREIN.  
 RESIDENT ENGINEER \_\_\_\_\_ DATE \_\_\_\_\_

PROJ. NO. I-5746C  
MECKLENBURG COUNTY  
 BRIDGE NO. 590322  
 SHEET 1 OF 2 MILE POST: 3.25



STATE OF NORTH CAROLINA  
 DEPARTMENT OF TRANSPORTATION  
 RALEIGH  
**GENERAL DRAWING  
 FOR BRIDGE  
 ON I-277 OVER  
 CHARLOTTE AREA TRANSIT**

DRAWN BY : REZA KOUCHEKI DATE : .05/2021  
 CHECKED BY : H.A. LOCKLEAR DATE : .05/2021

**PLAN**

REVISIONS						SHEET NO.
NO.	BY:	DATE:	NO.	BY:	DATE:	S5-1
1			3			TOTAL SHEETS
2			4			274

DOCUMENT NOT CONSIDERED FINAL UNLESS ALL SIGNATURES COMPLETED