

# AS-BUILT REPAIR QUANTITY TABLE

END BENT 2	QUANTITIES			
	ESTIMATE		ACTUAL	
<b>SHOTCRETE REPAIRS</b>	AREA SO. FT.	VOLUME CU. FT.	AREA SO. FT.	VOLUME CU. FT.
CAP	0.0	0.0		
CURTAIN WALL	5.7	2.9		
WING WALL	0.0	0.0		
<b>CONCRETE REPAIRS</b>	AREA SO. FT.	VOLUME CU. FT.	AREA SO. FT.	VOLUME CU. FT.
CAP	0.0	0.0		
CURTAIN WALL	0.0	0.0		
WING WALL	0.0	0.0		
<b>EPOXY COATING</b>	SQ. FT.		SQ. FT.	
CAP	0.0			

VALUES IN CHART REPRESENT ESTIMATED REPAIR TOTALS AFTER REMOVAL OF UNSOUND CONCRETE, MINIMUM OF 1" BEHIND REBAR AND MINIMUM 2" CLEARANCE TO SAWCUT. SEE "TYPICAL CAP AND COLUMN REPAIR DETAILS" SHEET.

## NOTES

END BENT INFORMATION IS TAKEN FROM THE BRIDGE MAINTENANCE UNIT/DATA ON EXISTING STRUCTURE DATED 06/23/1983.



REPAIR LOCATIONS AND ESTIMATE OF QUANTITIES ARE GIVEN WITH THE BEST INFORMATION AVAILABLE. IF ADDITIONAL REPAIRS NOT SHOWN ON THE DRAWINGS ARE DEEMED NECESSARY BY THE INSPECTOR OR ENGINEER THE CONTRACTOR SHALL NOTE ON THE DRAWINGS THE APPROXIMATE LOCATION AND DESCRIPTION OF THE REPAIRS AND ADJUST THE ACTUAL QUANTITIES ENTERED INTO THE REPAIR QUANTITY TABLE.

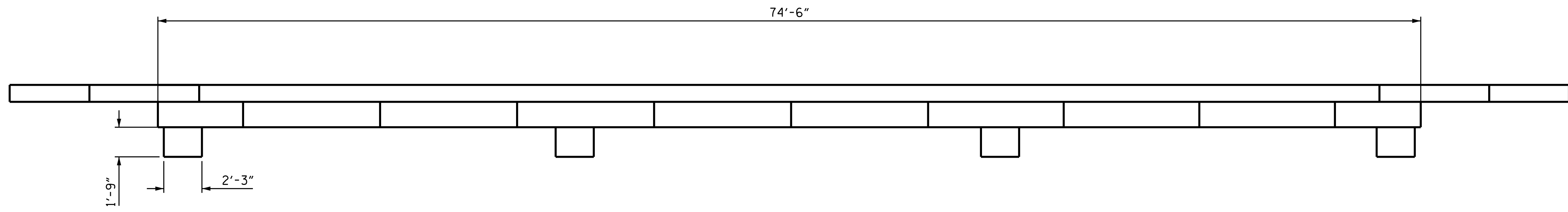
CLEAN AND REMOVE DEBRIS FROM THE TOP OF THE CAP AND APPLY EPOXY PROTECTIVE COATING. EPOXY COATING SHALL BE APPLIED TO THE TOP SURFACE OF THE CAP. THE CONTRACTOR SHALL NOT COAT THE AREA OF THE CAP BENEATH THE MASONRY PLATES. FOR EPOXY COATING, SEE SPECIAL PROVISIONS.

SHOTCRETE REPAIRS MAY BE REPLACED WITH CONCRETE REPAIRS WITH THE APPROVAL OF THE ENGINEER.

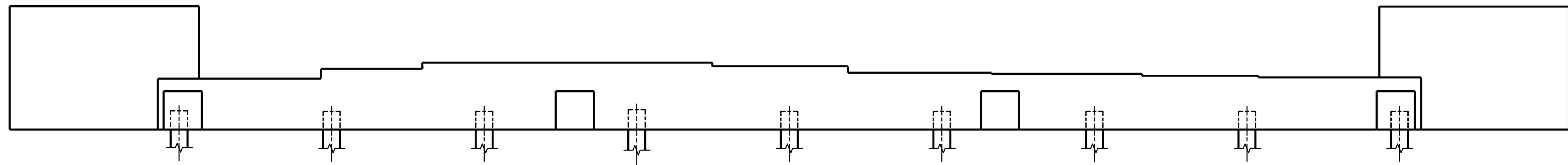
FOR SHOTCRETE REPAIRS, SEE SPECIAL PROVISIONS.

FOR CONCRETE REPAIRS, SEE SPECIAL PROVISIONS.

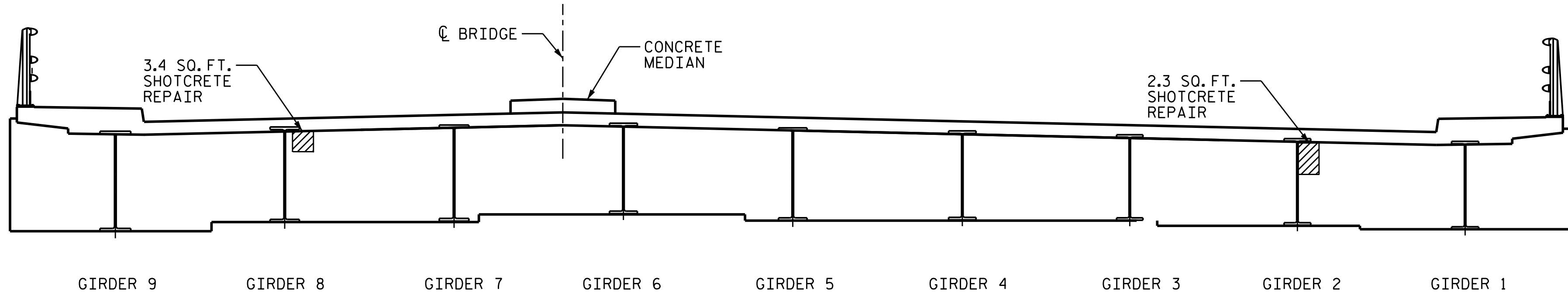
-  SHOTCRETE REPAIR AREA
-  CONCRETE REPAIR AREA



PLAN

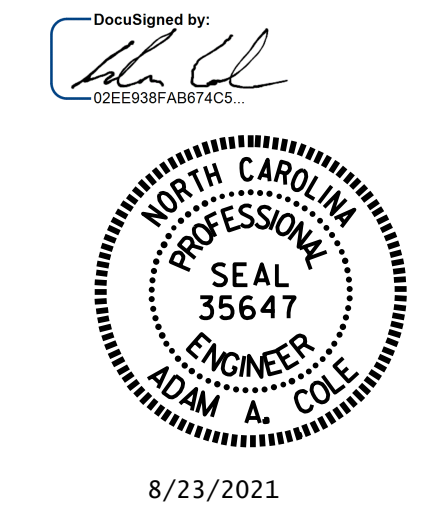


ELEVATION



TYPICAL SECTION

PROJECT NO. I-5746C  
MECKLENBURG COUNTY  
 BRIDGE NO. 590138



STATE OF NORTH CAROLINA  
 DEPARTMENT OF TRANSPORTATION  
 RALEIGH  
  
 END BENT 2

DRAWN BY : E. BAYISSA DATE : 06/2021  
 CHECKED BY : H.A. LOCKLEAR DATE : 06/2021

NO.	REVISIONS			SHEET NO.
	BY:	DATE:	NO.	
1			3	S3-14 TOTAL SHEETS 274
2			4	

DOCUMENT NOT CONSIDERED FINAL UNLESS ALL SIGNATURES COMPLETED