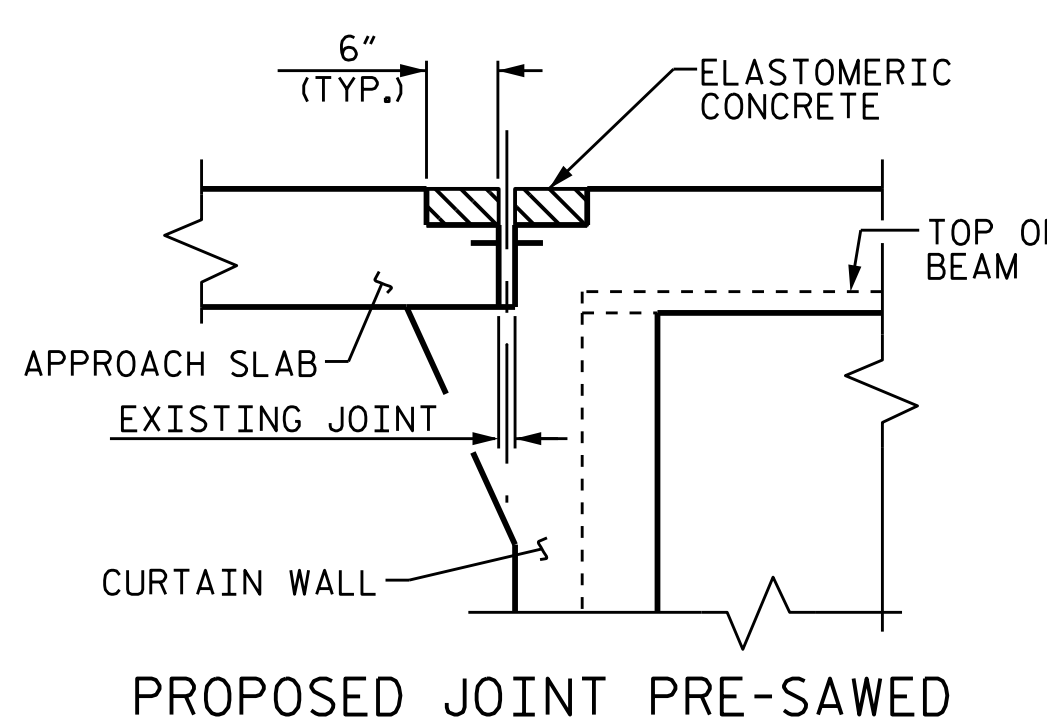
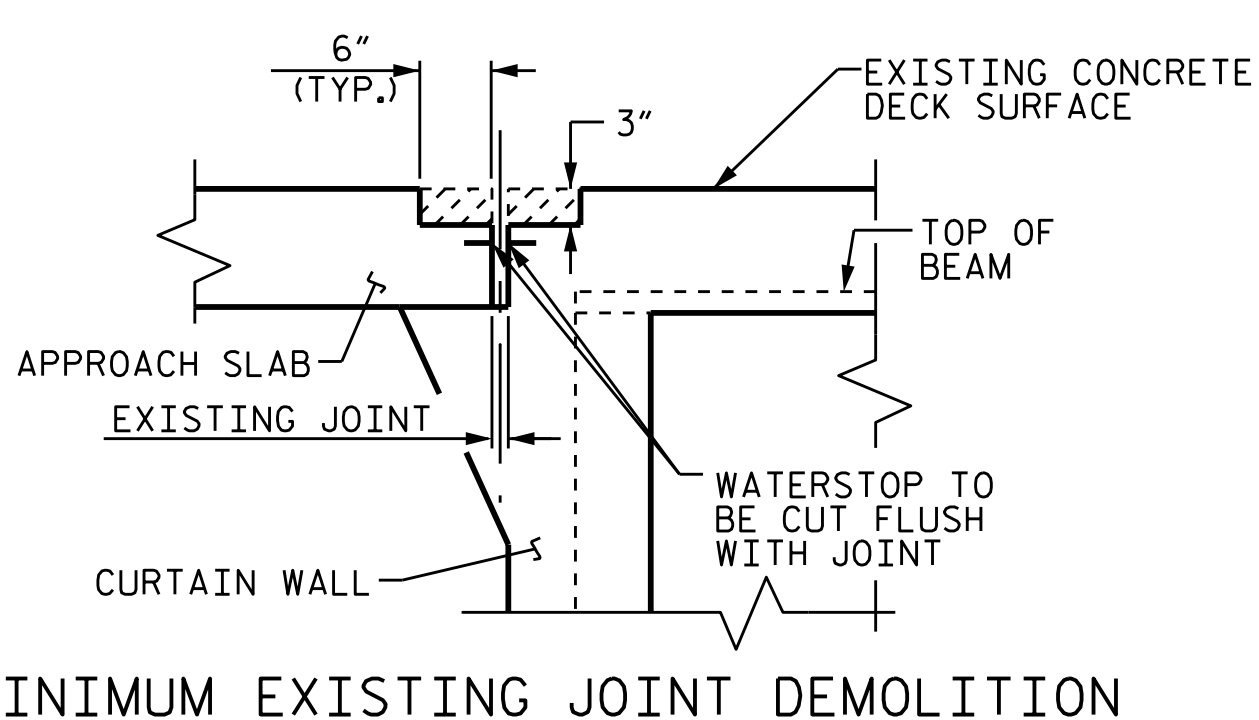
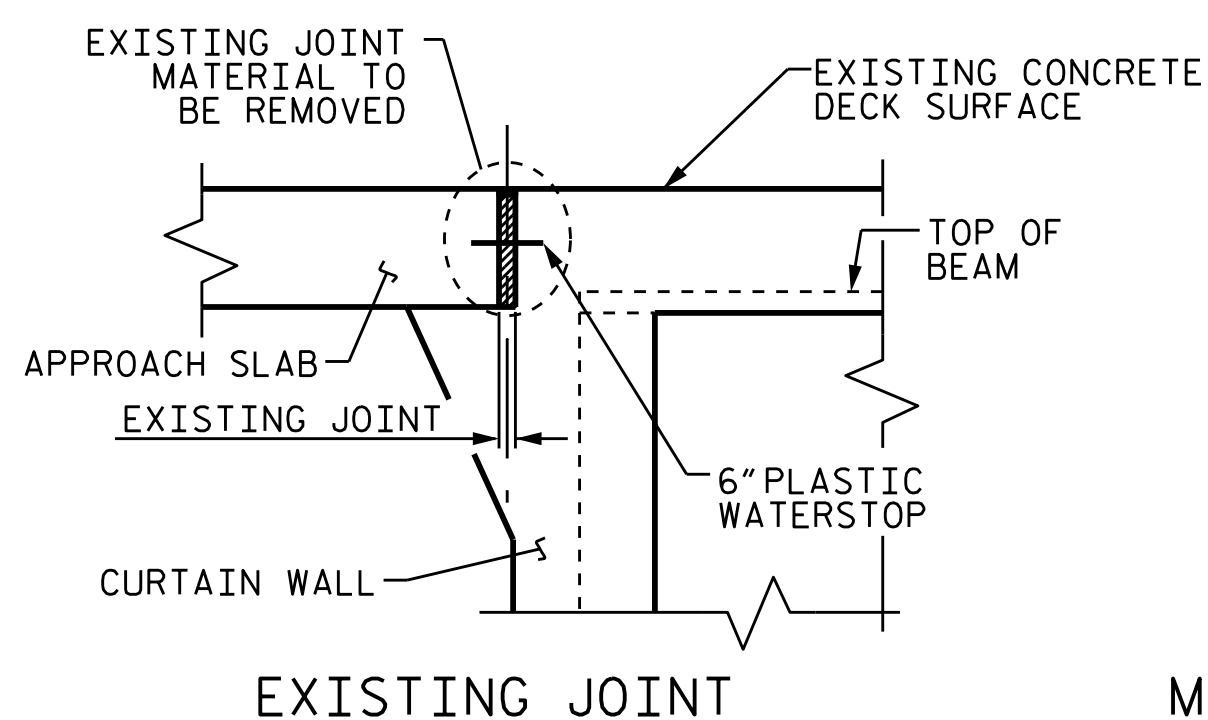


ELASTOMERIC CONCRETE FOR PRESERVATION		
END BENT 1	20.3	CU. FT.
END BENT 2	12.5	CU. FT.
* TOTAL	32.8	CU. FT.

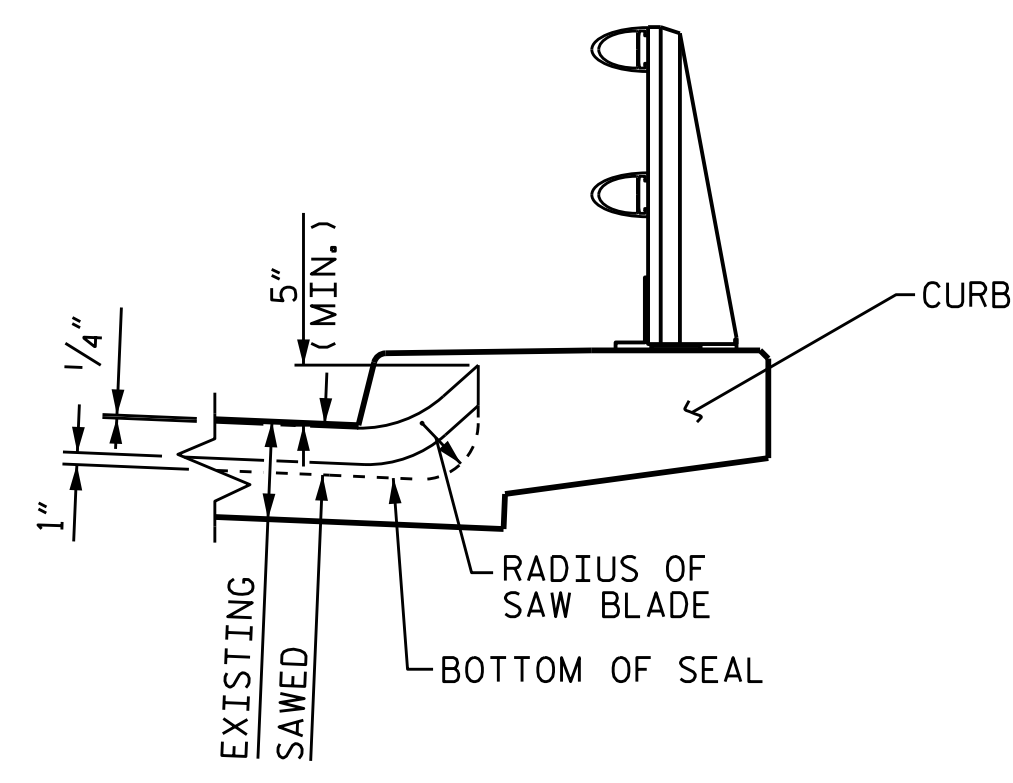
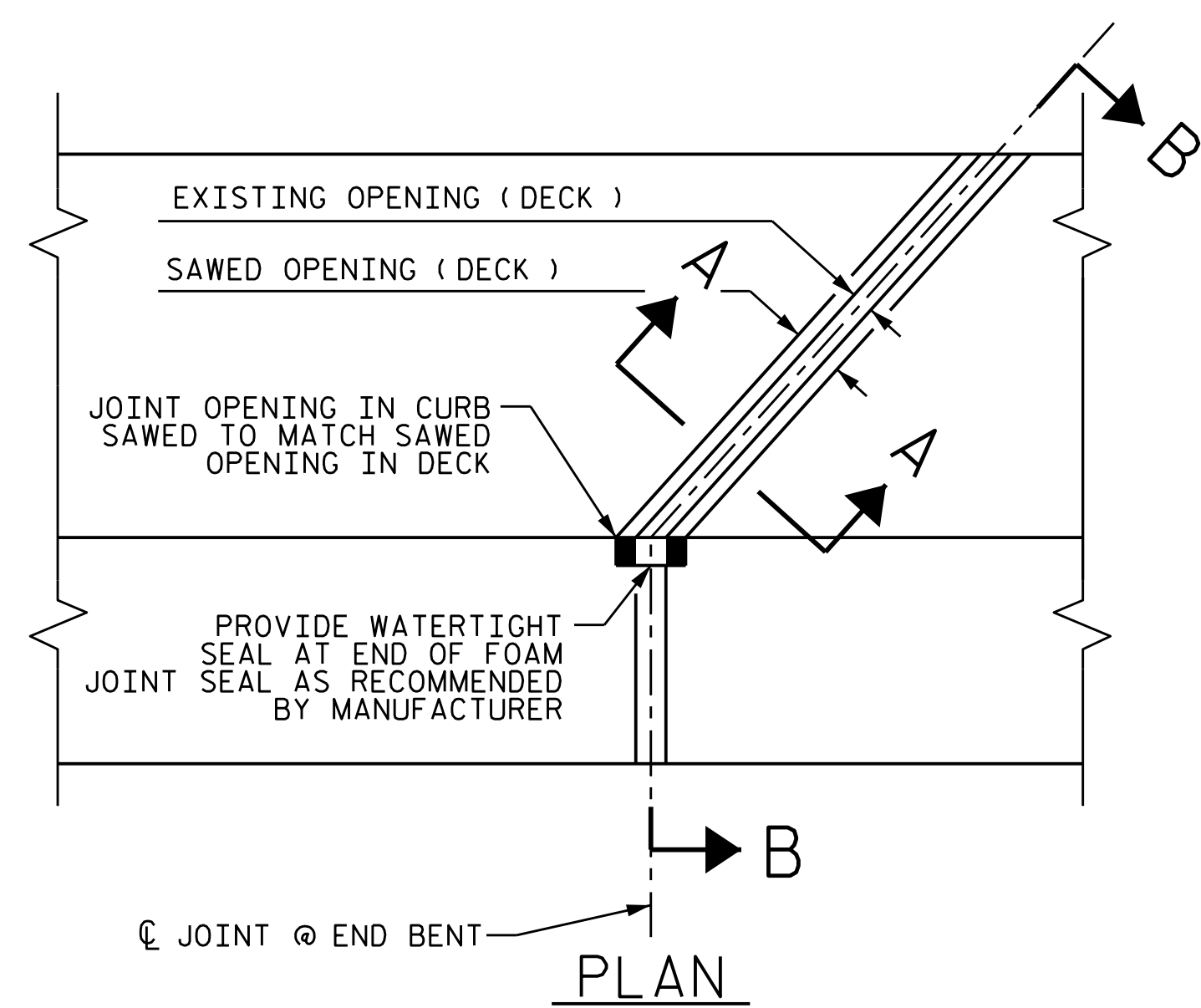
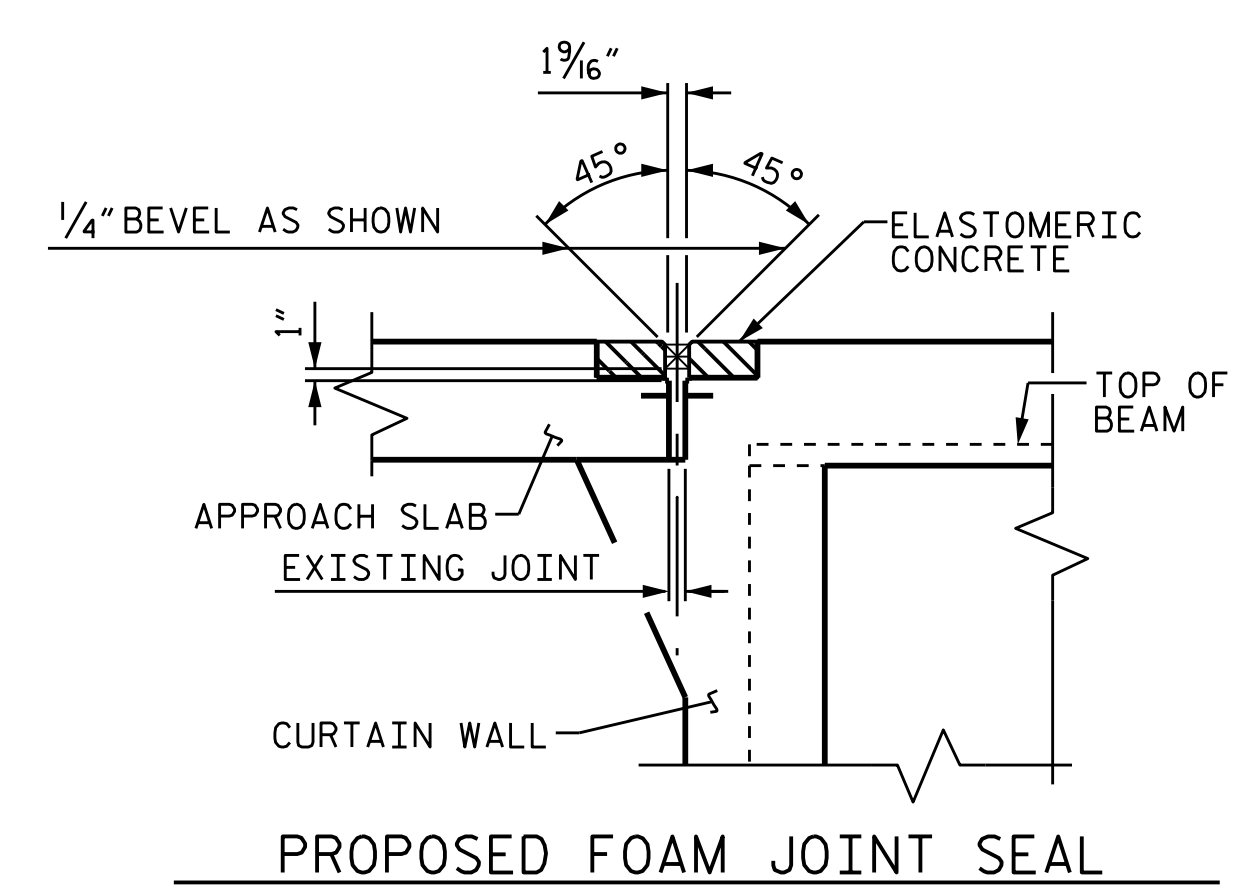
* BASED ON THE MINIMUM BLOCKOUT SHOWN.

JOINT REPIAR QUANTITY TABLE		
	ESTIMATE	ACTUAL
FOAM JOINT SEALS FOR PRESERVATION		
END BENT 1	81.6 LF.	
END BENT 2	49.7 LF.	
TOTAL	131.3 LF.	



SECTION A-A

IF THE EMBEDDED PORTION OF THE EXISTING PLASTIC WATERSTOP IS EXPOSED DURING THE JOINT DEMOLITION, THE ENTIRE CONCRETE DEPTH TO THE WATERSTOP SHALL BE REMOVED. IF SUCH EXCAVATION EXTENDS MORE THAN 2" BELOW THE BOTTOM OF THE PLANNED ELASTOMERIC CONCRETE HEADER, AS SHOWN, APPROVED REPAIR CONCRETE SHALL BE PLACED IN THE EXCAVATED AREA TO THE ELEVATION AT THE BOTTOM OF THE ELASTOMERIC CONCRETE. EXCAVATION OF CONCRETE AT THE EXISTING JOINT SHALL RESULT IN THE BOTTOM OF THE EXCAVATION BEING REASONABLY FLAT AND LEVEL, TO PROVIDE SUFFICIENT SUBSTRATE FOR PLACEMENT AND SUPPORT OF ELASTOMERIC CONCRETE.

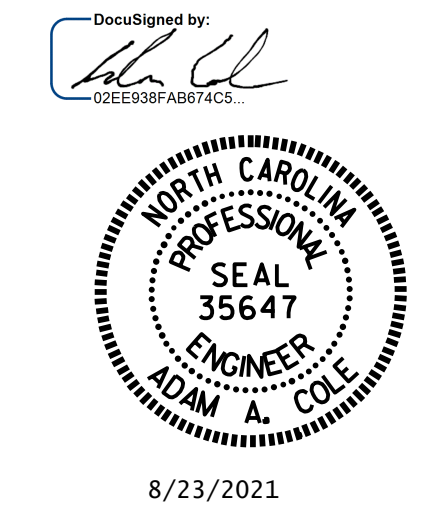


FOAM JOINT SEAL SHALL BE FACTORY FORMED OR CUT, HEAT WELDED AND TURNED UP PARALLEL TO FACE OF CURB.

NOTES

- CONTRACTOR SHALL FIELD VERIFY THE EXISTING JOINT OPENING PRIOR TO ORDERING JOINT SEAL MATERIAL. IF THE ACTUAL JOINT OPENING VARIES FROM THE OPENING INDICATED IN THE DETAILS BY MORE THAN 1/4", NOTIFY THE ENGINEER.
- THE MANUFACTURER IS TO RECOMMEND AND PROVIDE THE NOMINAL UNCOMPRESSED SEAL WIDTH OF FOAM JOINT SEAL FOR THE SIZE OF THE OPENING ON THE PLANS. FOAM JOINT SHALL BE INSTALLED AS PER THE MANUFACTURER'S RECOMMENDATION.
- THE CONTRACTOR SHALL TAKE CARE DURING JOINT REHAB OPERATIONS NOT TO DROP ANY MATERIALS BELOW THE BRIDGE, WITHOUT PROTECTIVE DEVICES BELOW TO CATCH THE MATERIAL. ANY MATERIAL THAT FALLS BELOW THE BRIDGE SHALL BE CONTAINED, REMOVE AND DISPOSED OF BY THE CONTRACTOR AT NO EXTRA COST TO THE DEPARTMENT. IF THE ENGINEER DETERMINES THAT THE PROTECTIVE DEVICES ARE OR ARE NOT BEING EMPLOYED, THE WORK SHALL BE SUSPENDED UNTIL ADEQUATE PROTECTION IS PROVIDED.
- THE CONTRACTOR WILL NOT BE PERMITTED TO FORM THE JOINT IN LIEU OF SAWING THE JOINT.
- THE INSTALLED FOAM JOINT SEALS SHALL BE WATERTIGHT.
- QUANTITIES SHOWN IN THE ELASTOMERIC CONCRETE FOR PERSERVATION TABLE ARE BASED ON THE MINIMUM JOINT DEMOLITION SHOWN.
- FOR EXCAVATION BELOW THE BOTTOM OF THE PLANNED JOINT DEMOLITION, CONCRETE FOR DECK REPAIR SHALL BE PLACED IN THE EXCAVATED AREA TO THE ELEVATION AT THE BOTTOM OF THE PROPOSED ELASTOMERIC CONCRETE FOR PRESERVATION HEADERS SHOWN.
- FOR FOAM JOINT SEAL FOR PRESERVATION, SEE SPECIAL PROVISIONS.
- FOR ELASTOMERIC CONCRETE FOR PRESERVATION, SEE SPECIAL PROVISIONS.
- FOR CONCRETE FOR DECK REPAIR, SEE SPECIAL PROVISIONS.

PROJECT NO. I-5746C
MECKLENBURG COUNTY
 BRIDGE NO. 590048



STATE OF NORTH CAROLINA
 DEPARTMENT OF TRANSPORTATION
 RALEIGH

JOINT DETAILS

DRAWN BY : REZA KOUCHEKI DATE : 05/2021
 CHECKED BY : ASRA YASMEEN DATE : 05/2021

REVISIONS						SHEET NO.
NO.	BY:	DATE:	NO.	BY:	DATE:	
1			3			TOTAL SHEETS
2			4			274

DOCUMENT NOT CONSIDERED FINAL UNLESS ALL SIGNATURES COMPLETED