

TABLE 1

***TMP#'S AND **DISTANCES BETWEEN MATCH LINES VARY

| ***TMP-# | **DISTANCES |
|----------|-------------|
| TMP-39 | 815' |
| TMP-41 | 815' |
| TMP-43 | 1485' |
| TMP-46 | 2240' |

STEP 1

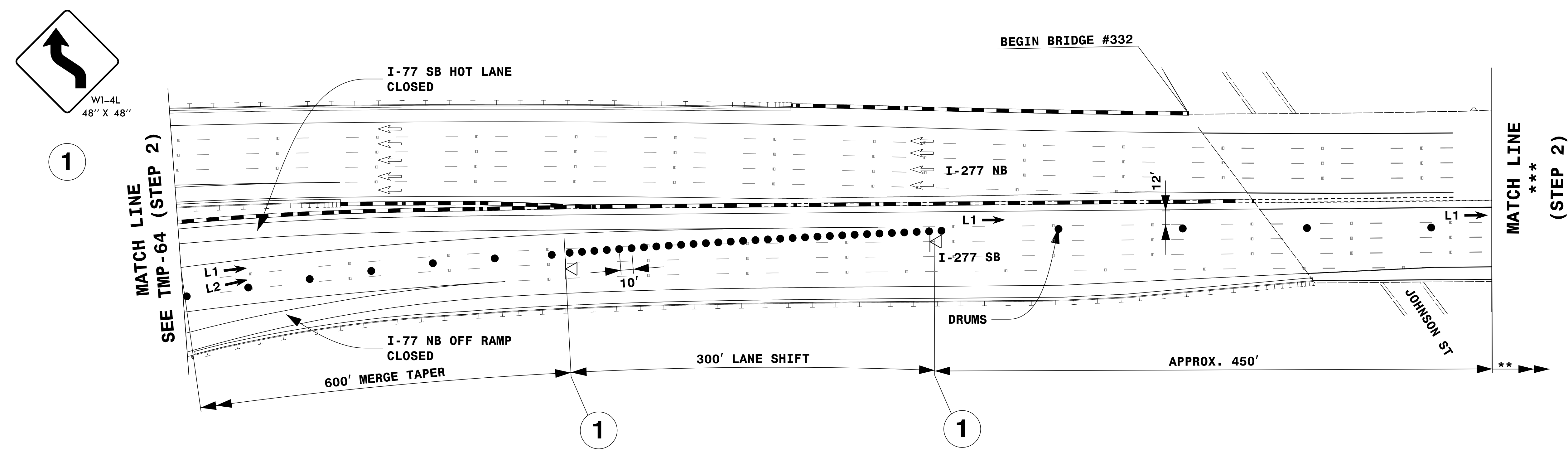


TABLE 2

***TMP#'S AND **DISTANCES BETWEEN MATCH LINES VARY

| ***TMP-# | **DISTANCES |
|----------|-------------|
| TMP-39 | 815' |
| TMP-42 | 815' |
| TMP-45 | 215' |
| TMP-48 | 215' |

STEP 2

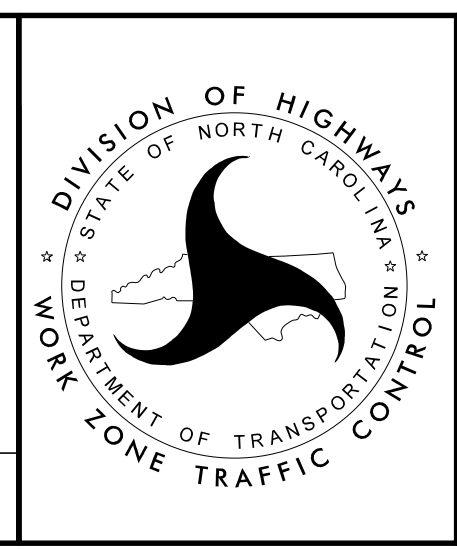
LEGEND

| | |
|--|-------------------------------|
| | PORTABLE SIGN |
| | FLASHING ARROW PANEL |
| | FLASHING ARROW BOARD (TYPE C) |
| | DIRECTION OF TRAFFIC FLOW |
| | TRAFFIC DRUM |

- NOTES:**
- THIS DRAWING IS TO BE USED IN CONJUNCTION WITH TMP-64 (LANE CLOSURE DETAIL SOUTHBOUND ADDITION 2 OF 2), TMP-20 (OFFSITE DETOUR FOR I-77 NB RAMP TO I-277 SB), RSD 1101.02 SHEET 3 OF 14 TABLE 1 AND TABLE 2.
 - THIS DRAWING IS TO BE USED IN CONJUNCTION WITH TMP-6C (PHASING NOTES SHEET 3 OF 3) I-77 HOT LANES CLOSURE MAP DETAIL TO CLOSE THE SB HOT LANES.
 - FOR ENTRANCE AND EXIT RAMP'S SIGNING, REFER TO RSD 1101.01, DETAIL B & C.
 - FOR ADDITIONAL NOTES, SEE RSD 1101.01, SHEET 2.
 - SEE TMP-3 (PAVEMENT PRESERVATION VICINITY MAP) FOR BRIDGE LOCATION.
 - TRAFFIC CONTROL DEVICE ① SHALL BE INSTALLED PER ENGINEER'S INSTRUCTIONS.

DocuSigned by:
John Mazeres
SEAL
043935
ENGINEER
JOHN P. MAZERES
8/5/2021

DOCUMENT NOT CONSIDERED FINAL UNLESS ALL SIGNATURES COMPLETED



LANE CLOSURE DETAIL SOUTHBOUND ADDITION (1 OF 2)

8/5/2021 2:00:17 PM I-5746E_TMP-63_LANE_CLOSURE_DETAIL_SOUTHBOUND_ADDITION (STEP 1 OF 2).dgn User: jduke