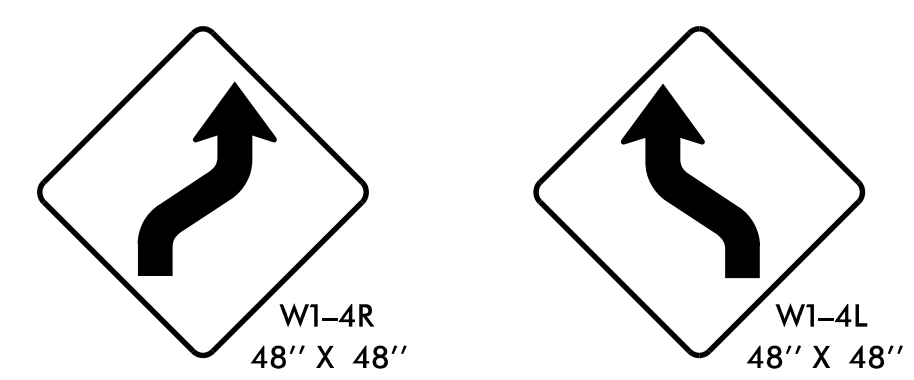


BEGIN BRIDGE #330

N GRAHAM ST
US-29

END BRIDGE #330

SEE RSD 1101.02
SHEET 8 OF 14



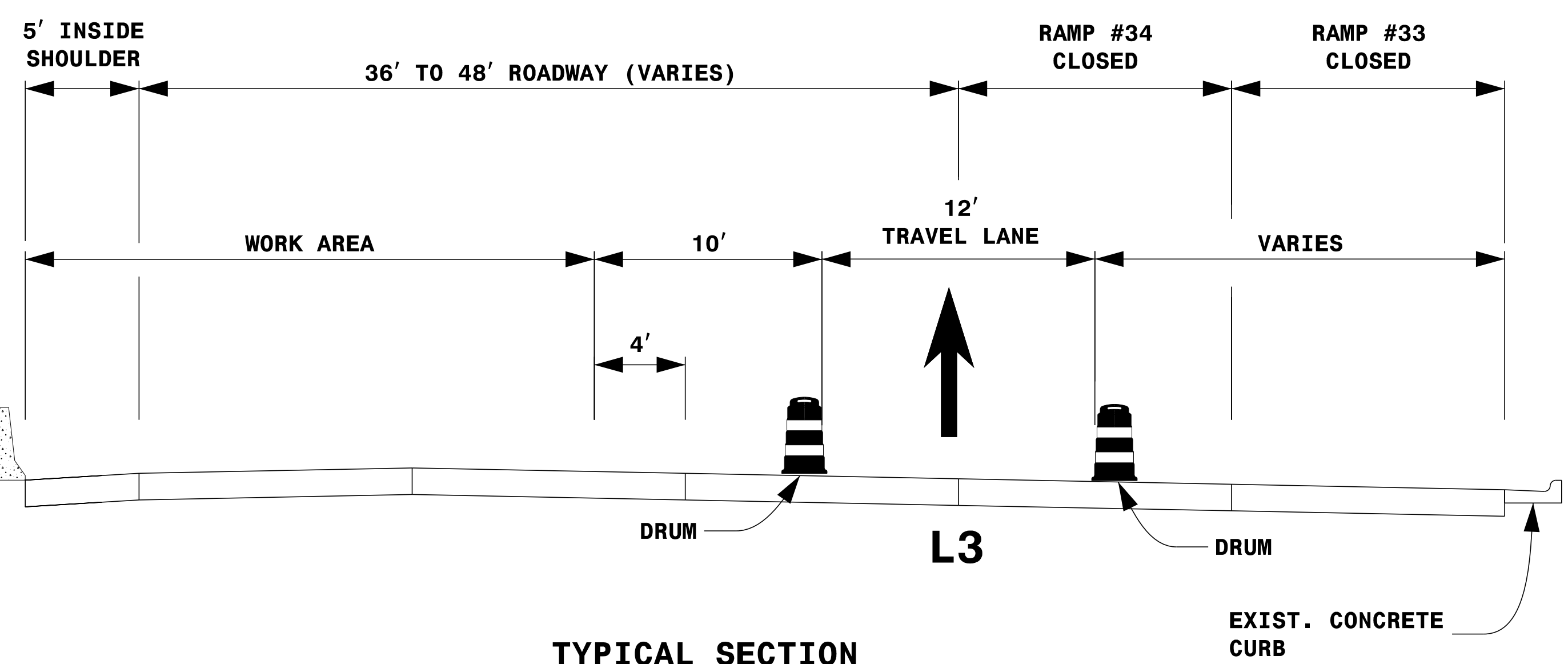
1

2

LEGEND	
	PORTABLE SIGN
	FLASHING ARROW BOARD (TYPE C) (96" X 48" MIN.) "CAUTION MODE"
	TRUCK MOUNTED ATTENUATOR (TMA)
	WORK AREA
	DIRECTION OF TRAFFIC FLOW
	TRAFFIC DRUM

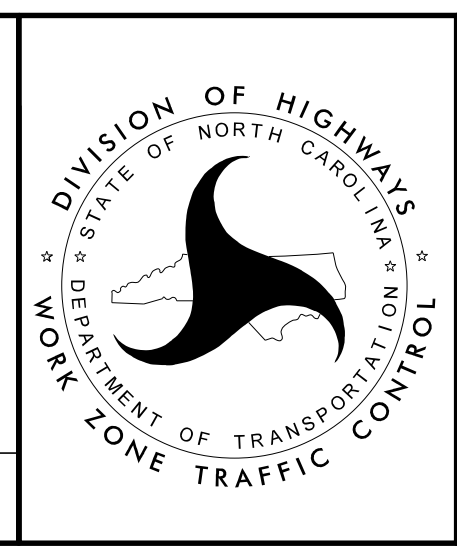
NOTES:

1. THIS DRAWING IS TO BE USED IN CONJUNCTION WITH TMP-8 (OFFSITE DETOUR #33), TMP-10 (OFFSITE DETOUR #34B) AND RSD 1101.02 SHEET 8 OF 14.
2. FOR ENTRANCE AND EXIT RAMP SIGNING, REFER TO RSD 1101.01, DETAIL B & C.
3. FOR ADDITIONAL NOTES, SEE RSD 1101.01, SHEET 2.
4. SEE TMP-3 (PAVEMENT PRESERVATION VICINITY MAP) FOR SECTION LOCATIONS.
5. TRAFFIC CONTROL DEVICES 1 AND 2 SHALL BE INSTALLED PER ENGINEER'S INSTRUCTIONS.



**TYPICAL SECTION
SECTIONS 7E & 8E NORTHBOUND**

DocuSigned by:
John P. Mazeres
Professional Engineer
SEAL 043935
8/5/2021



**LANE CLOSURE DETAIL
SECTIONS 7E & 8E
NORTHBOUND
(STEP 1 OF 2)**

8/5/2021 2:00:49 PM I:\5746E-TMP-35-LANE CLOSURE DETAIL SECTION 7E & 8E NORTHBOUND (STEP 1 OF 2).dgn User: jduke