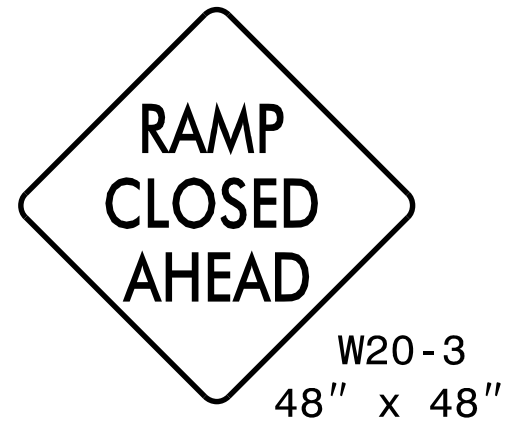
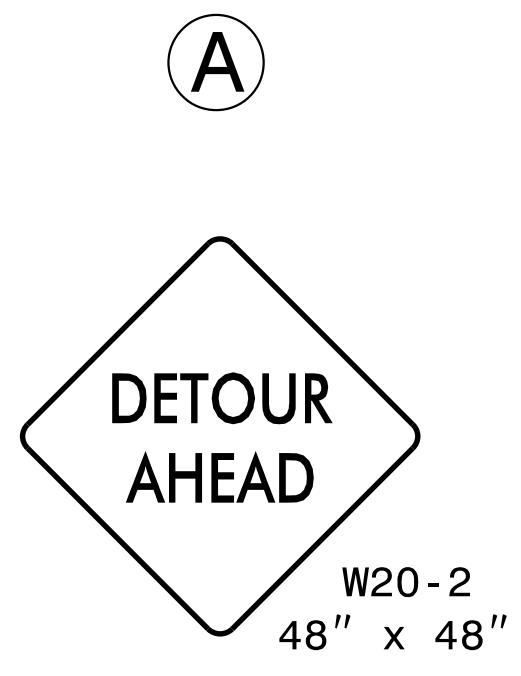
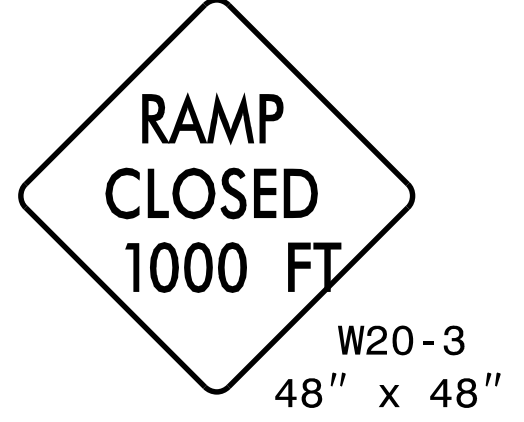
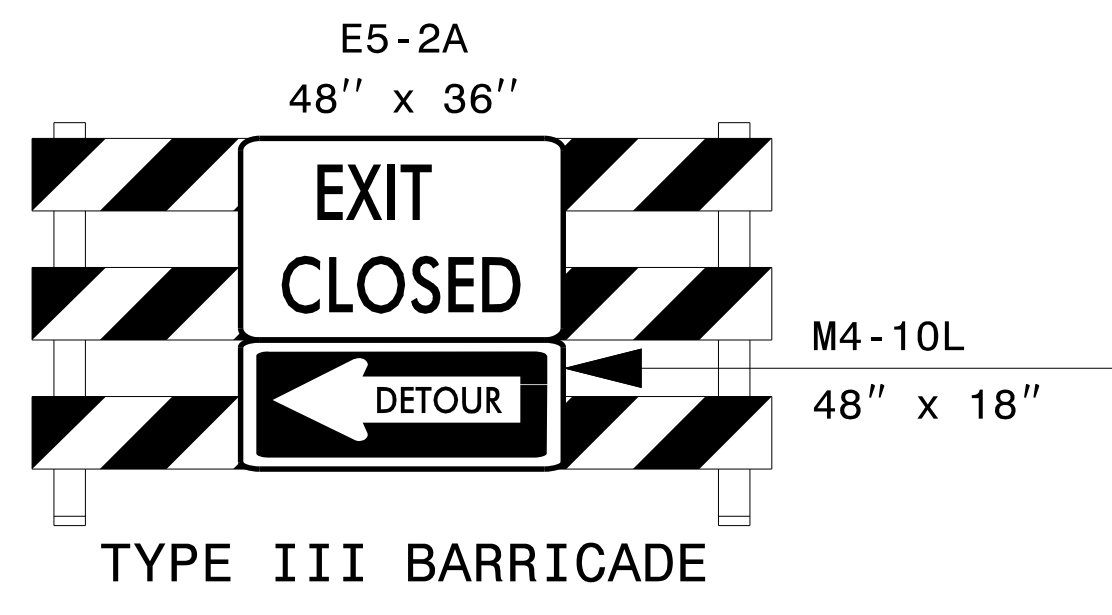


12TH ST EXIT DETOUR ROUTE



| | |
|----------------------------|------------------------------|
| MESSAGE NO. 1 | MESSAGE NO. 2 |
| EXIT 3A CLOSED AHEAD | FOLLOW 12TH ST. DETOUR |

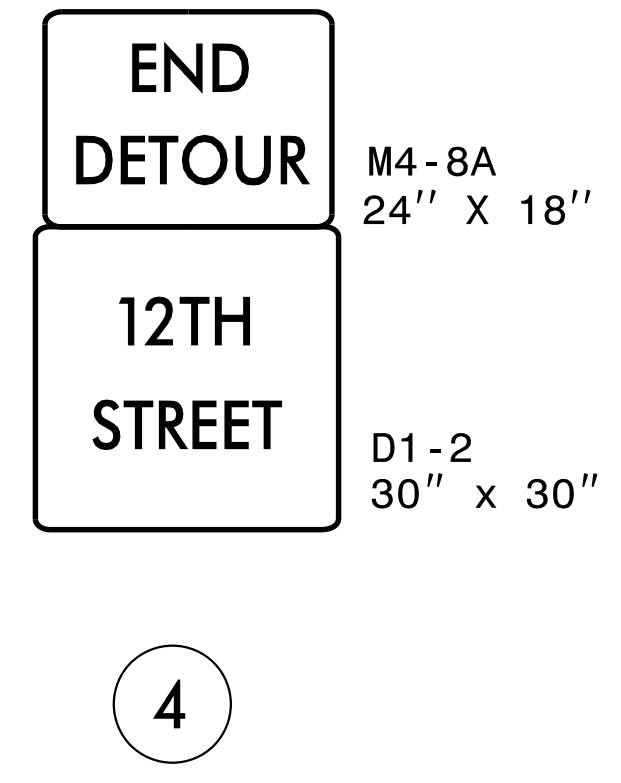
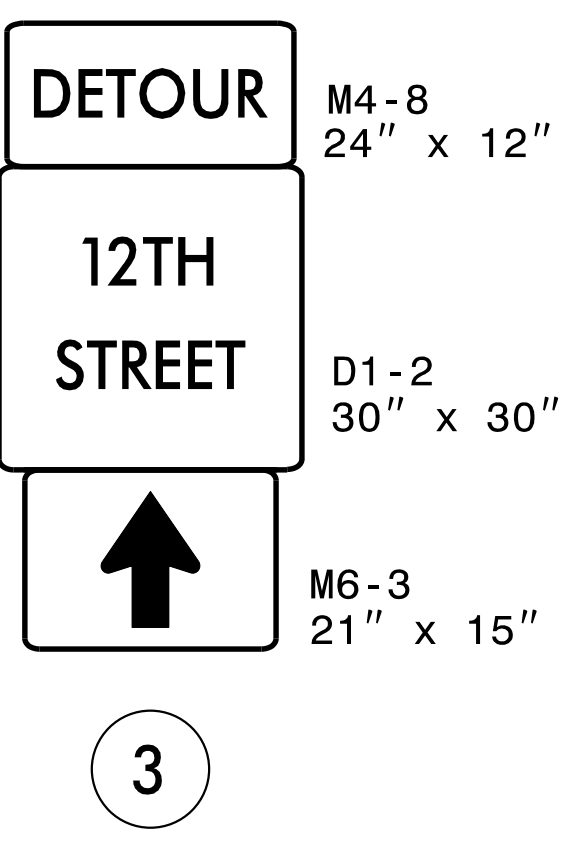
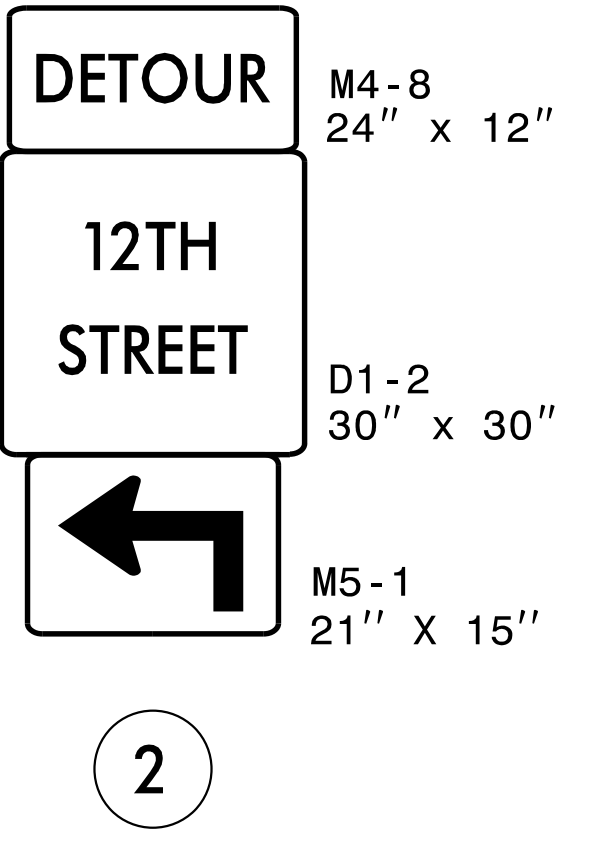
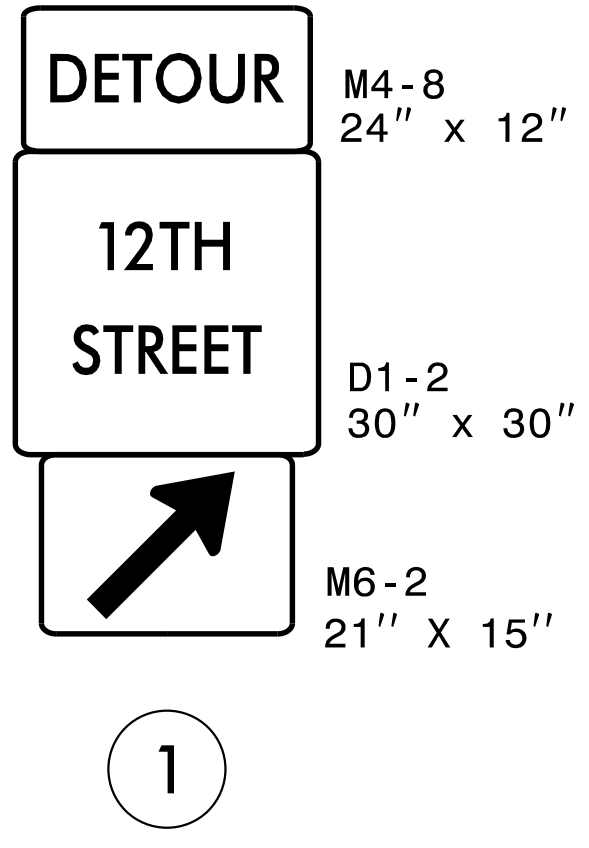
CHANGEABLE MESSAGE SIGN

DETOUR DESCRIPTION:

I-277 NB EXIT 3B TO E. 12TH ST. TO N. CHURCH ST. TO E. 11TH ST.
 N. DAVIDSON ST. TO E. 12TH ST.

NOTES:

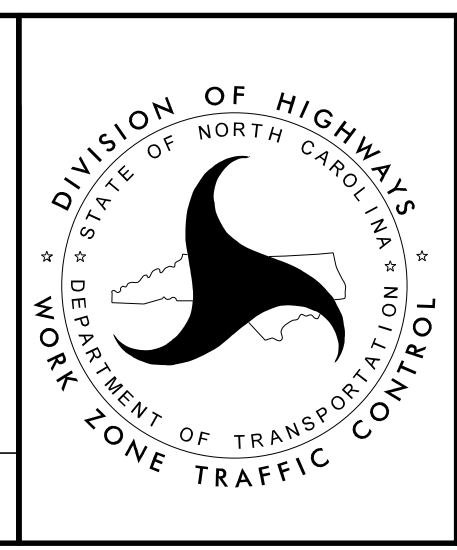
- TRAFFIC CONTROL DEVICES ① THRU ④ AND ①A THRU ①E SHALL BE INSTALLED PER ENGINEER'S INSTRUCTIONS.
- FOR DETOUR DESTINATION SIGNS, SEE SIGN DETAIL SHEETS.



8/5/2021 2:00:21 PM I5746E_TMP-13-OFFSITE DETOUR 37 SIGNING AND ROAD CLOSURE SIGNING.dgn
 User: jduke

DocuSigned by:

**DOCUMENT NOT CONSIDERED FINAL
 UNLESS ALL SIGNATURES COMPLETED**



**OFFSITE DETOUR 37
SIGNING AND ROAD
CLOSURE SIGNING**