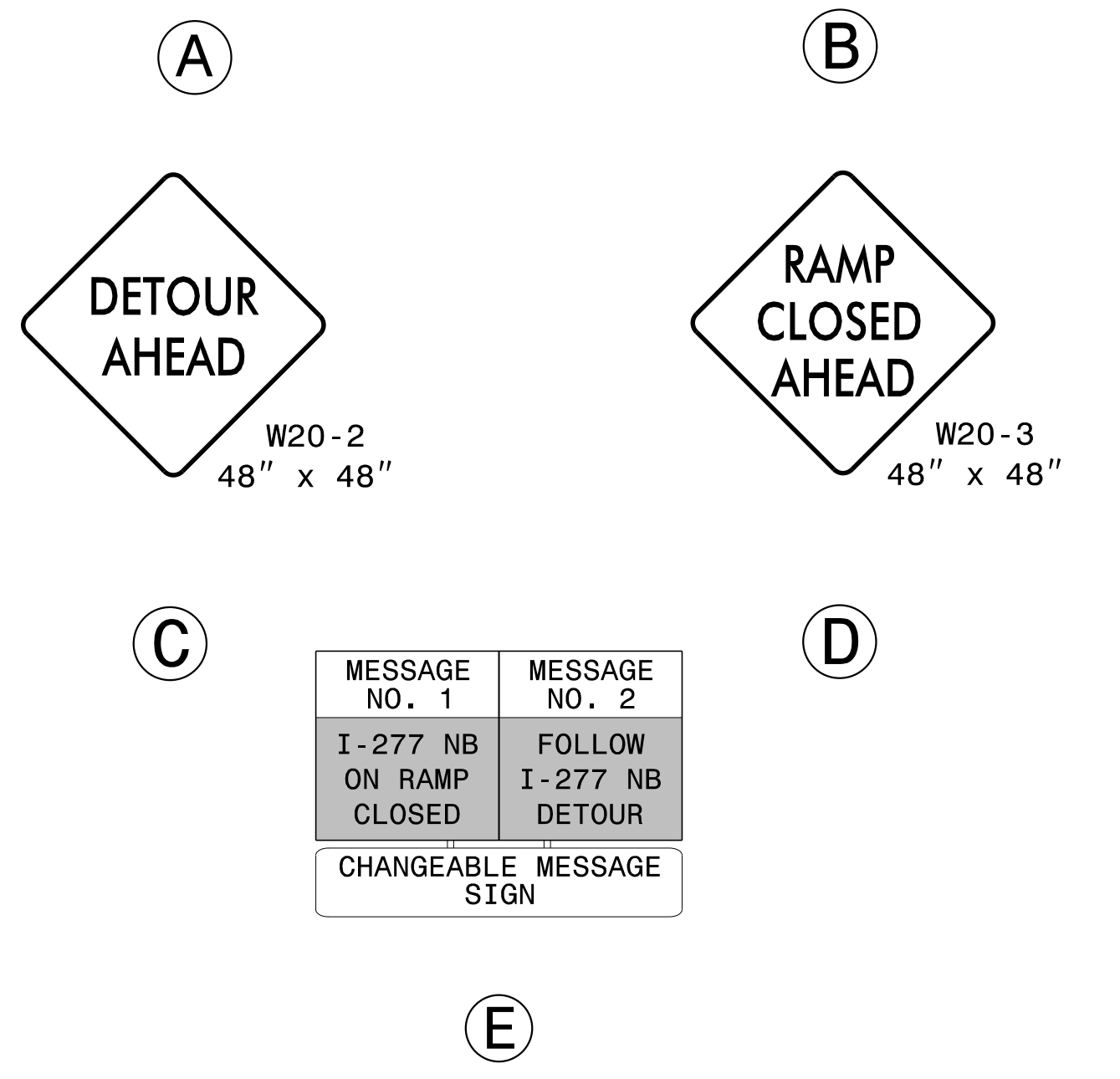
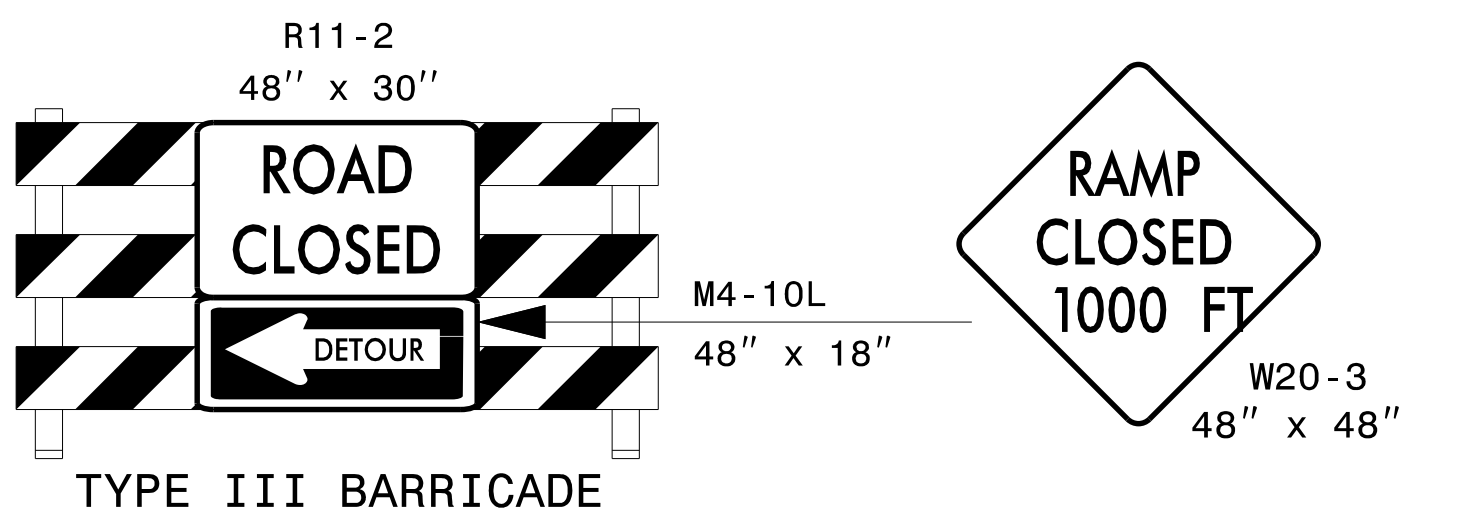
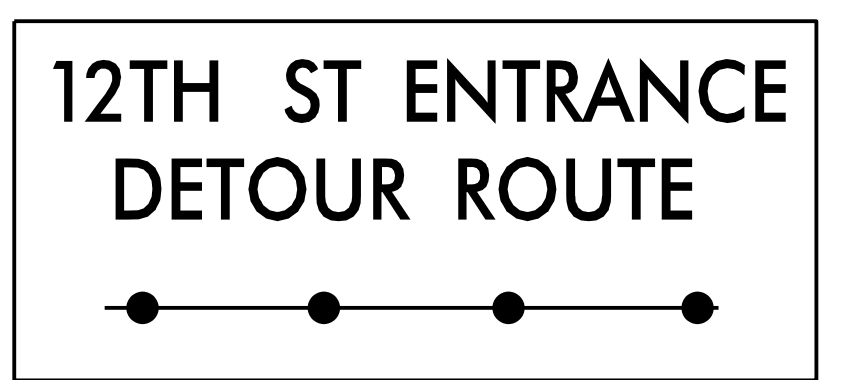
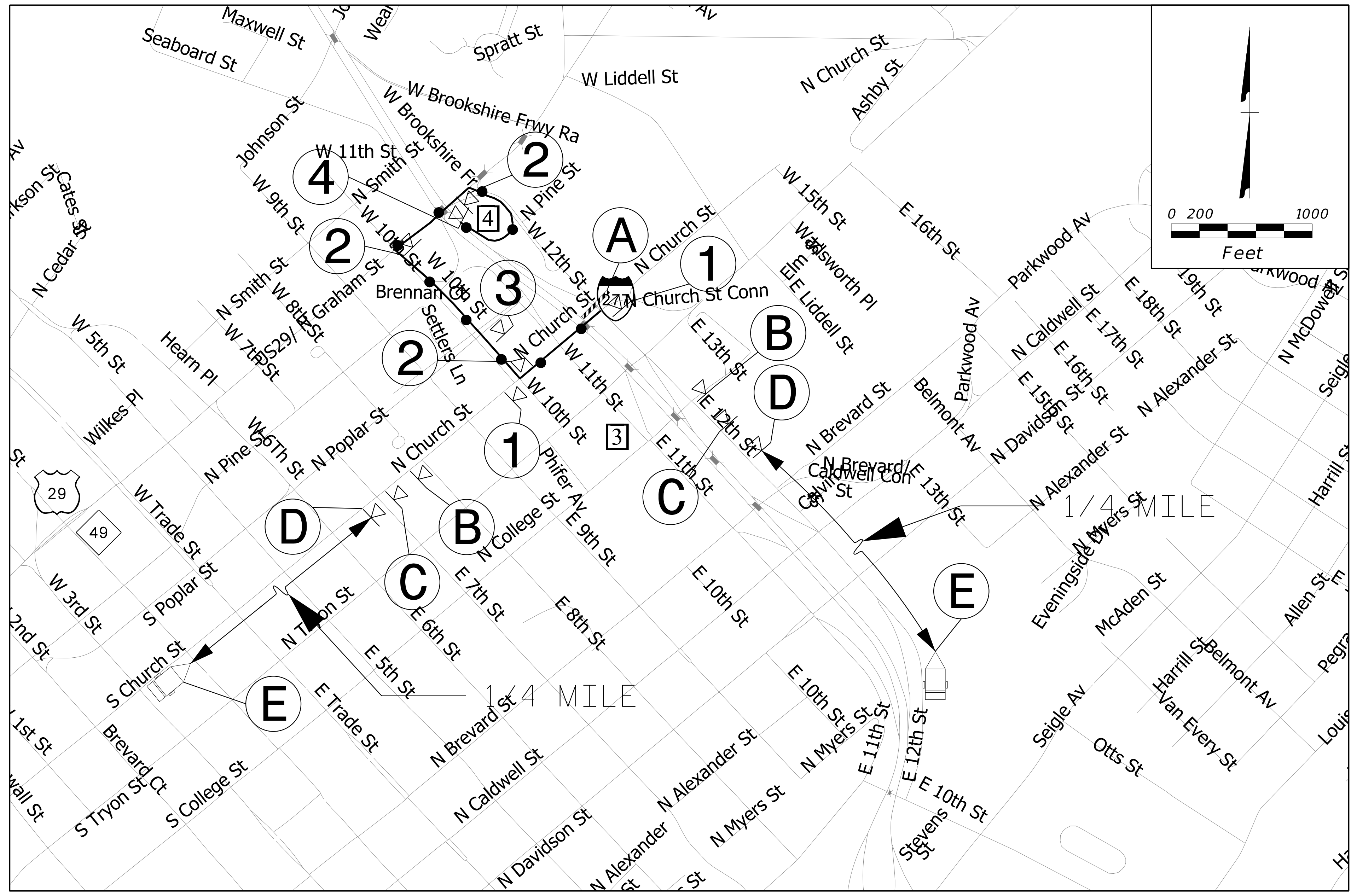


PROJ. REFERENCE NO.	SHEET NO.
I - 5746C	TMP - 9
KCA KISINGER CAMPO & ASSOCIATES	Kisinger Campo & Associates Corp. 301 Fayetteville St., Suite 1500 Raleigh, NC 27601 John P. Mazeres, PE No. 043935 NC Firm License No. C-1506

PAVEMENT PRESERVATION

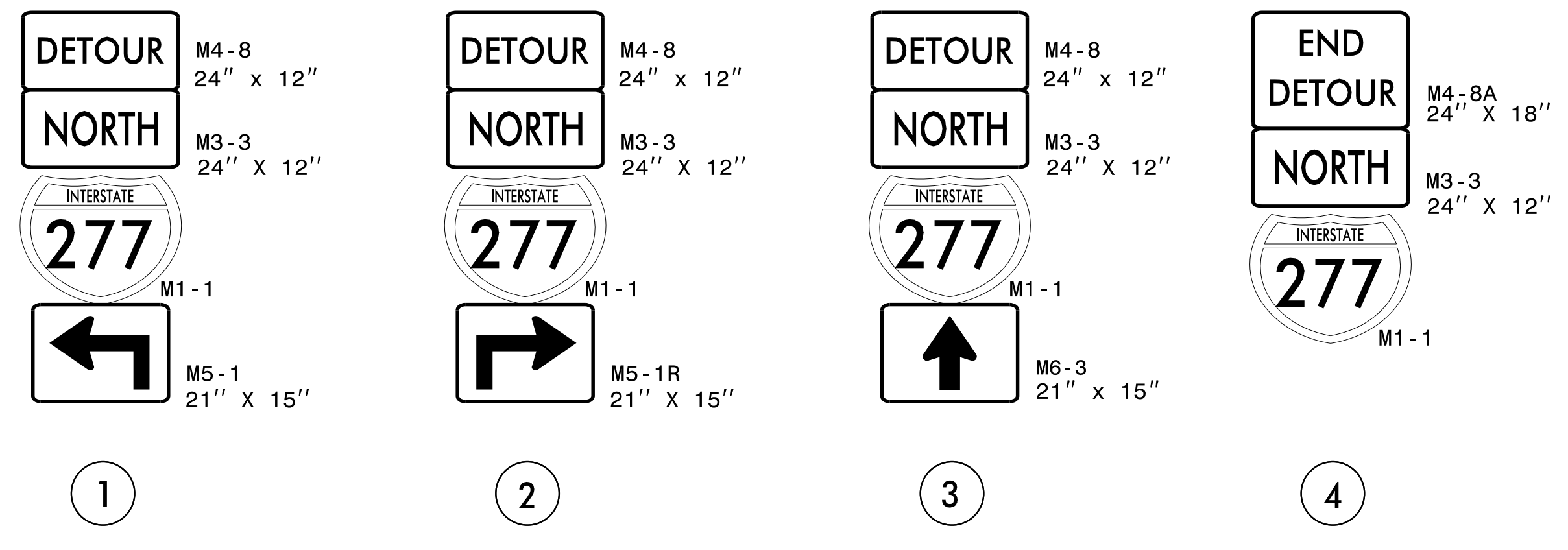


DETOUR DESCRIPTION:

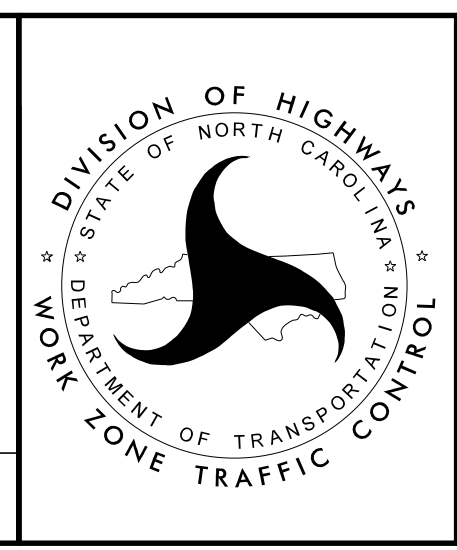
W. 12TH ST. TO N. CHURCH ST. TO W. 10TH ST. TO GRAHAM ST./US29
TO I-277 NB ENTRANCE RAMP

NOTES:

TRAFFIC CONTROL DEVICES ① THRU ④ AND ①A THRU ①E
SHALL BE INSTALLED PER ENGINEER'S INSTRUCTIONS.



DocuSigned by:
John Mazeres
PROFESSIONAL ENGINEER
SEAL 043935
JOHN P. MAZERES
8/5/2021
DOCUMENT NOT CONSIDERED FINAL
UNLESS ALL SIGNATURES COMPLETED



**OFFSITE DETOUR 34A
SIGNING AND ROAD
CLOSURE SIGNING**

8/5/2021 2:00:17 PM I-5746C_TMP-9_OFFSITE DETOUR 34A_SIGNING AND ROAD CLOSURE_SIGNING.dgn User: jduke