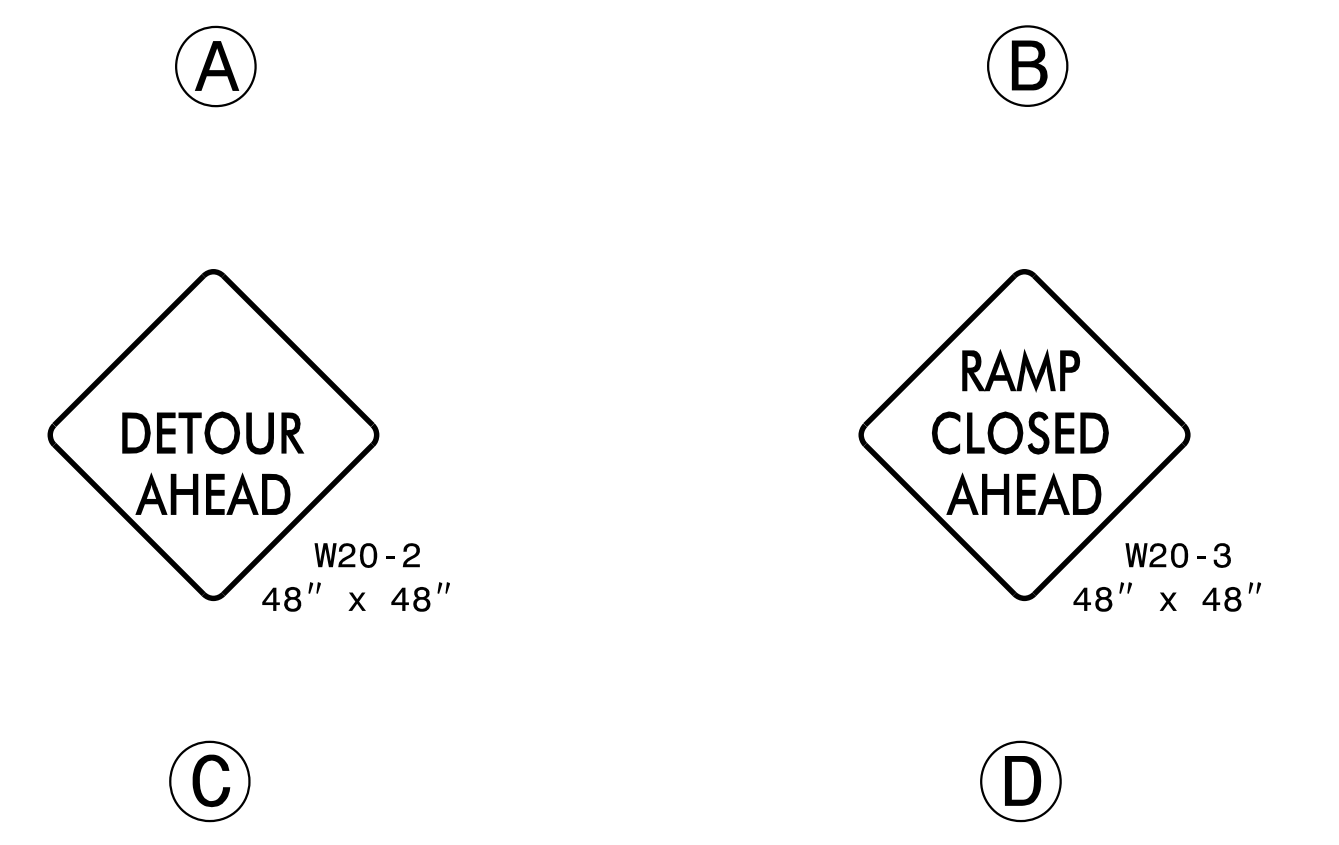
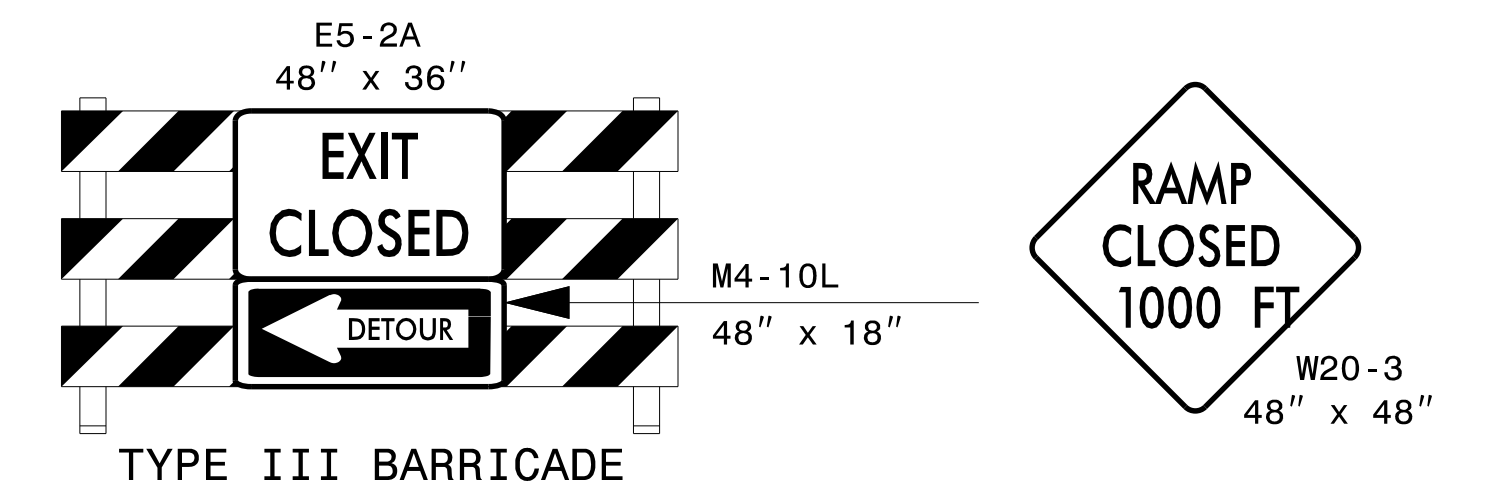


## I-277 NB DETOUR ROUTE



MESSAGE NO. 1	MESSAGE NO. 2
EXIT 242 CLOSED AHEAD	FOLLOW I-277 NB DETOUR

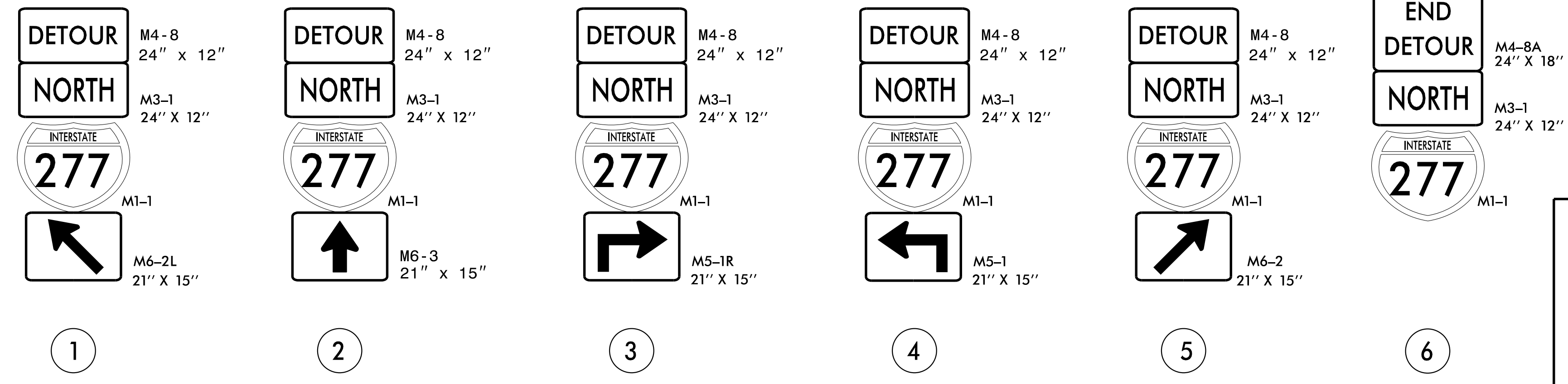
CHANGEABLE MESSAGE SIGN

### DETOUR DESCRIPTION:

US 74 WB TO EXIT FOR E. 6TH ST. AND S. MCDOWELL ST./NC27 TO E. 6TH ST. TO N. CALDWELL ST. TO I-277 NB ENTRANCE RAMP

### NOTES:

TRAFFIC CONTROL DEVICES ① THRU ⑥ AND ①A THRU ①E SHALL BE INSTALLED PER ENGINEER'S INSTRUCTIONS.



DocuSigned by:  
*John P. Mazeres*  
Professional Engineer  
SEAL 043935  
8/5/2021

DIVISION OF HIGHWAYS  
STATE OF NORTH CAROLINA  
DEPARTMENT OF TRANSPORTATION  
WORK ZONE TRAFFIC CONTROL

### OFFSITE DETOUR 30 SIGNING AND ROAD CLOSURE SIGNING

DOCUMENT NOT CONSIDERED FINAL  
UNLESS ALL SIGNATURES COMPLETED

8/5/2021 2:00:15 PM I-5746C\_TMP-7-OFFSITE DETOUR 30 SIGNING AND ROAD CLOSURE SIGNING.dgn User: jduke