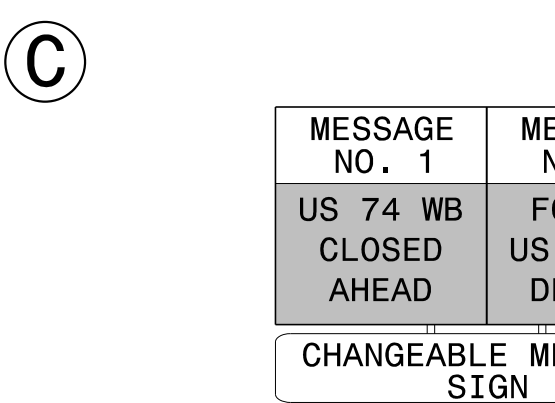
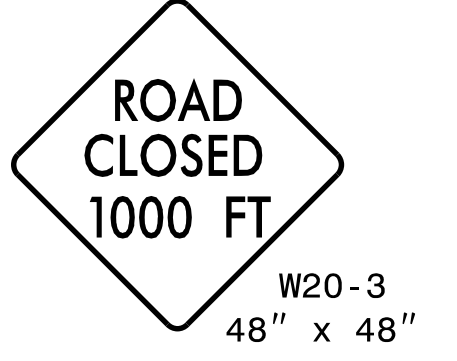
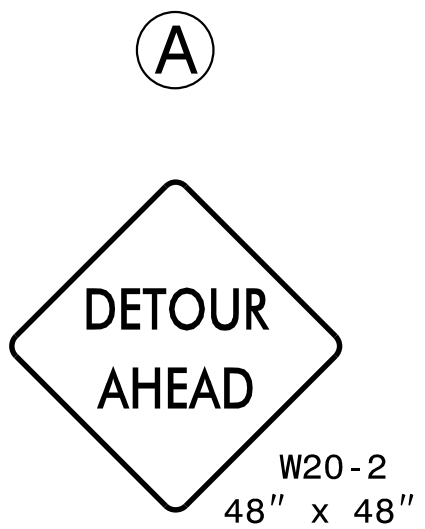
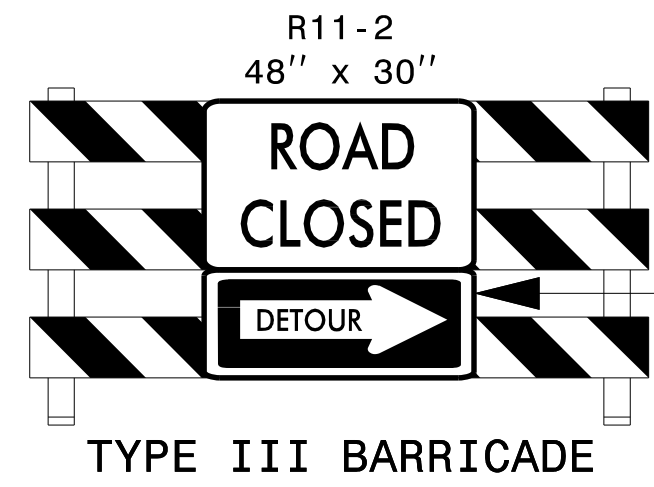
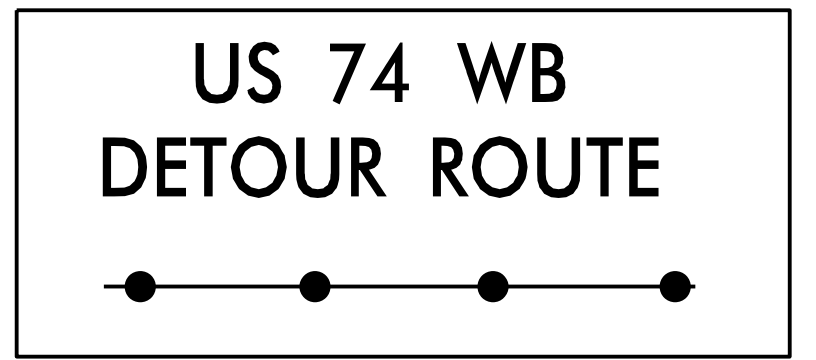


INTERCHANGE QUADRANT DESIGNATIONS:

- A** - NORTH-WEST QUADRANT
- B** - NORTH-EAST QUADRANT
- C** - SOUTH-EAST QUADRANT
- D** - SOUTH-WEST QUADRANT

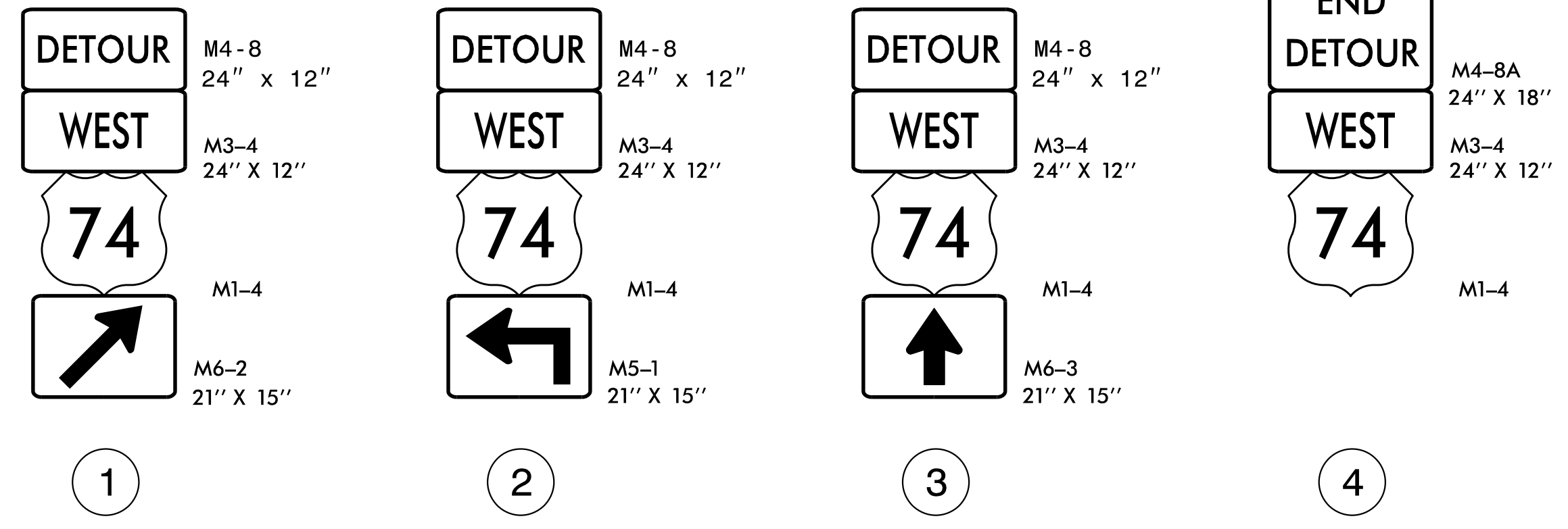


DETOUR DESCRIPTION:

US 74 WB EXIT 1C, TO I-77 NB TO EXIT 10 TO W. TRADE STREET TO I-77 SB ENTRANCE RAMP TO I-77 SB EXIT 9C TO US 74 WB

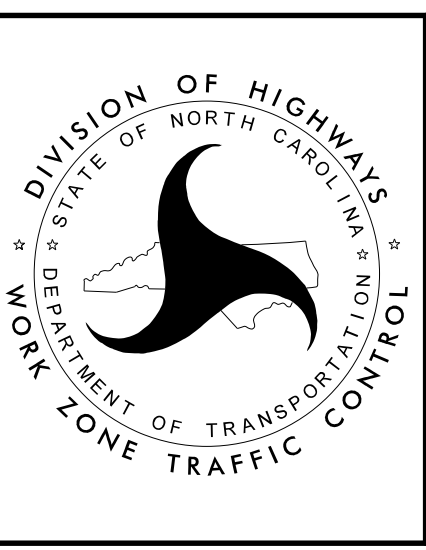
NOTES:

TRAFFIC CONTROL DEVICES ① THRU ④ AND ① THRU ⑤ SHALL BE INSTALLED PER ENGINEER'S INSTRUCTIONS.



8/5/2021 2:00:22 PM User: jduke

DOCUMENT NOT CONSIDERED FINAL UNLESS ALL SIGNATURES COMPLETED



**OFFSITE DETOUR
 BRIDGE #48
 SIGNING AND ROAD
 CLOSURE SIGNING**