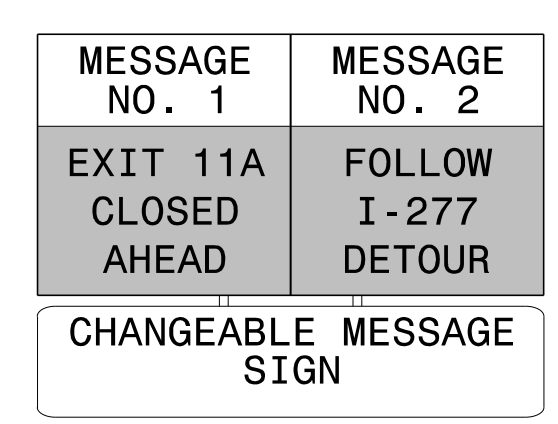
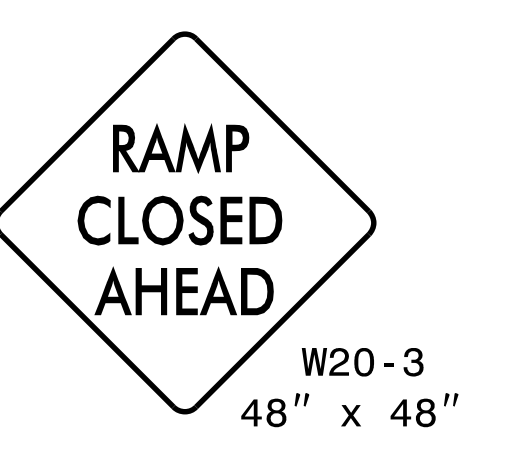
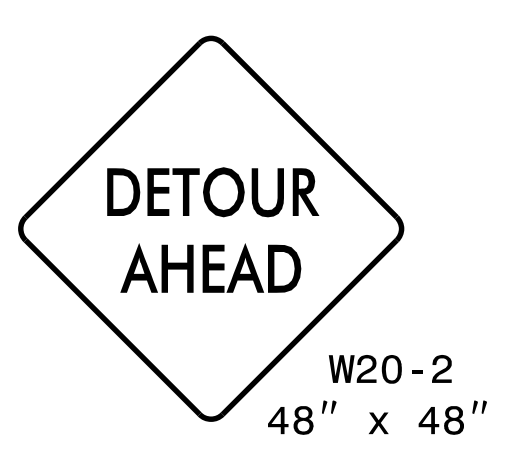
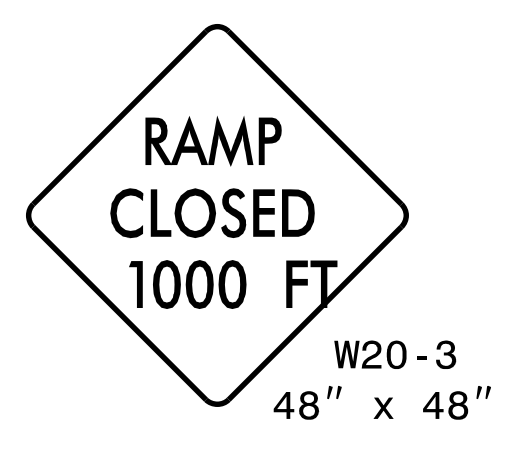
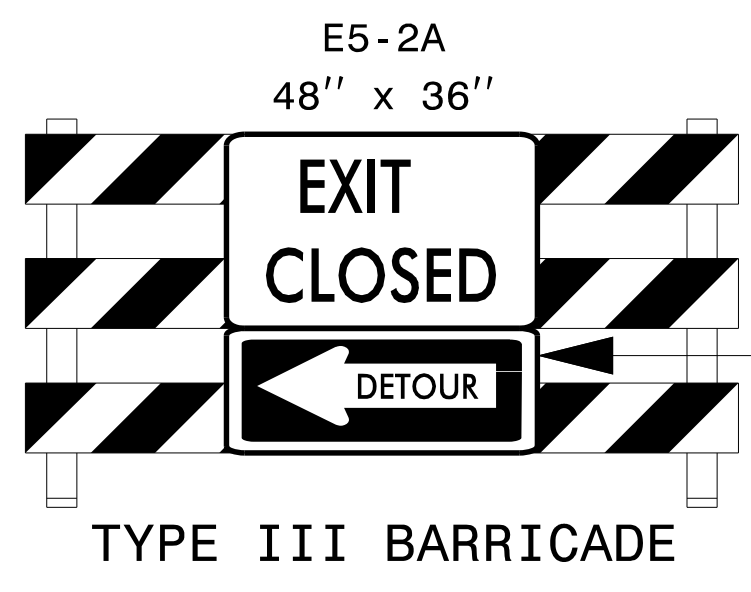


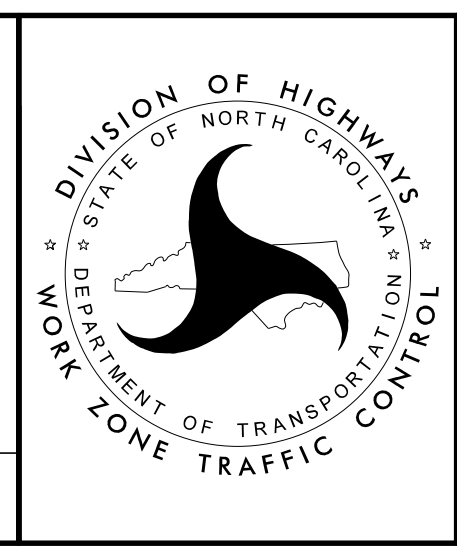
DETOUR DESCRIPTION:
 I-77 NB EXIT 12 TO LASALLE ST. TO I-77 SB TO I-77SB EXIT 11A TO I-277 SB

NOTES:
 1. TRAFFIC CONTROL DEVICES ① THRU ⑤ AND (A) THRU (E) SHALL BE INSTALLED PER ENGINEER'S INSTRUCTIONS.



DocuSigned by:

DOCUMENT NOT CONSIDERED FINAL UNLESS ALL SIGNATURES COMPLETED



**OFFSITE DETOUR
 I-77 RAMP
 TO I-277 SB
 SIGNING AND ROAD
 CLOSURE SIGNING**

8/5/2021
 200.20.15746CD_TMP-17_OFFSITE DETOUR I-77 RAMP TO I-277 SB SIGNING AND ROAD CLOSURE SIGNING.dgn
 User:tduke